

Area

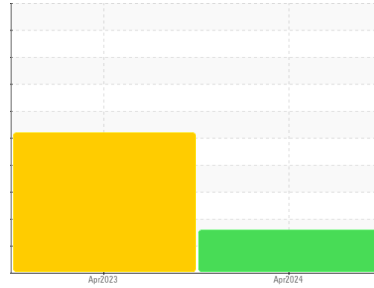
**PALLUBE 32**

Machine Id

**PALATEK 22GE003247 - ABBIAMO PASTA**

Component

**Compressor**



**DIAGNOSIS**

**Recommendation**

The filter change at the time of sampling has been noted. We recommend an early resample to monitor this condition.

**Wear**

All component wear rates are normal.

**Contamination**

There is no indication of any contamination in the oil.

**Fluid Condition**

An additive depletion is indicated. The AN level is at the top-end of the recommended limit.

SAMPLE INFORMATION		method	limit/base	current	history1	history2
Sample Number	Client Info			<b>UCS06144412</b>	UCS05821623	---
Sample Date	Client Info			<b>01 Apr 2024</b>	06 Apr 2023	---
Machine Age	hrs	Client Info		<b>5839</b>	3296	---
Oil Age	hrs	Client Info		<b>2600</b>	3296	---
Oil Changed	Client Info			<b>Not Changed</b>	Changed	---
Sample Status				<b>ATTENTION</b>	SEVERE	---

CONTAMINATION		method	limit/base	current	history1	history2
Water	WC Method		>0.1	<b>NEG</b>	NEG	---

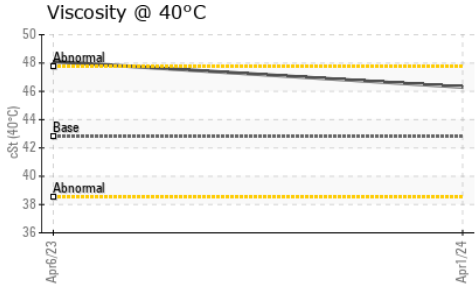
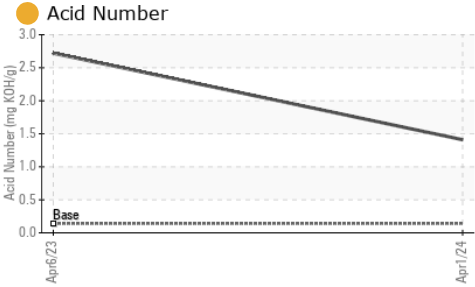
WEAR METALS		method	limit/base	current	history1	history2
Iron	ppm	ASTM D5185m	>50	<b>1</b>	22	---
Chromium	ppm	ASTM D5185m	>10	<b>&lt;1</b>	0	---
Nickel	ppm	ASTM D5185m		<b>&lt;1</b>	0	---
Titanium	ppm	ASTM D5185m		<b>&lt;1</b>	0	---
Silver	ppm	ASTM D5185m		<b>0</b>	0	---
Aluminum	ppm	ASTM D5185m	>25	<b>2</b>	0	---
Lead	ppm	ASTM D5185m	>25	<b>&lt;1</b>	0	---
Copper	ppm	ASTM D5185m	>50	<b>&lt;1</b>	0	---
Tin	ppm	ASTM D5185m	>15	<b>&lt;1</b>	0	---
Vanadium	ppm	ASTM D5185m		<b>&lt;1</b>	0	---
Cadmium	ppm	ASTM D5185m		<b>&lt;1</b>	0	---

ADDITIVES		method	limit/base	current	history1	history2
Boron	ppm	ASTM D5185m	1	<b>0</b>	0	---
Barium	ppm	ASTM D5185m	730	<b>9</b>	0	---
Molybdenum	ppm	ASTM D5185m	0	<b>&lt;1</b>	0	---
Manganese	ppm	ASTM D5185m	0.0	<b>&lt;1</b>	<1	---
Magnesium	ppm	ASTM D5185m	0	<b>&lt;1</b>	4	---
Calcium	ppm	ASTM D5185m	0	<b>3</b>	0	---
Phosphorus	ppm	ASTM D5185m	0	<b>284</b>	310	---
Zinc	ppm	ASTM D5185m	0	<b>20</b>	0	---
Sulfur	ppm	ASTM D5185m	590	<b>498</b>	120	---

CONTAMINANTS		method	limit/base	current	history1	history2
Silicon	ppm	ASTM D5185m	>25	<b>&lt;1</b>	0	---
Sodium	ppm	ASTM D5185m		<b>0</b>	1	---
Potassium	ppm	ASTM D5185m	>20	<b>&lt;1</b>	0	---

FLUID DEGRADATION		method	limit/base	current	history1	history2
Acid Number (AN)	mg KOH/g	ASTM D8045	0.14	<b>1.41</b>	2.72	---

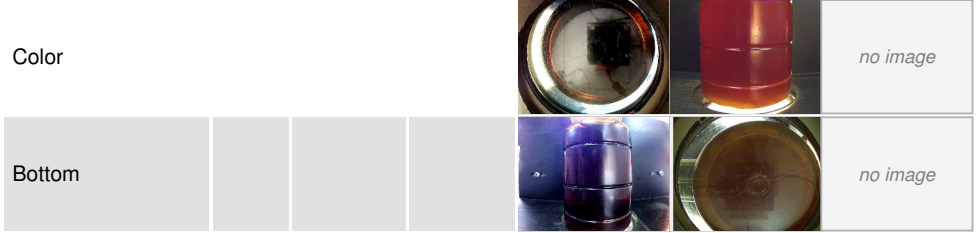
# OIL ANALYSIS REPORT



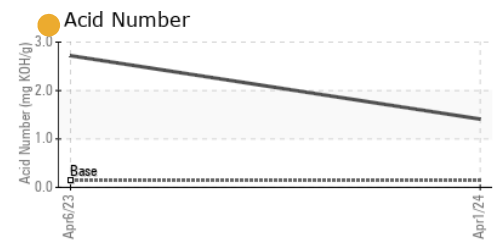
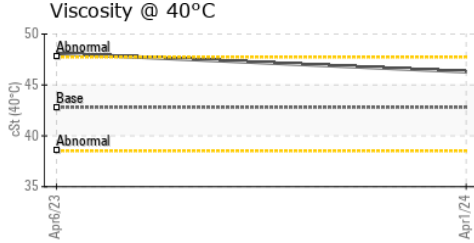
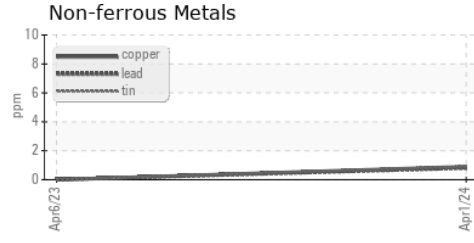
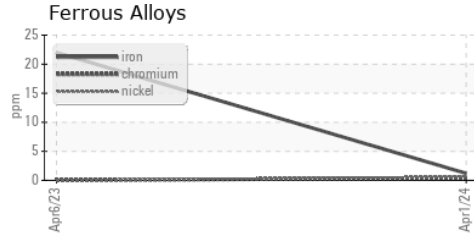
VISUAL	method	limit/base	current	history1	history2
White Metal	scalar	*Visual	NONE	NONE	---
Yellow Metal	scalar	*Visual	NONE	NONE	---
Precipitate	scalar	*Visual	NONE	NONE	---
Silt	scalar	*Visual	NONE	NONE	---
Debris	scalar	*Visual	NONE	NONE	MODER
Sand/Dirt	scalar	*Visual	NONE	NONE	---
Appearance	scalar	*Visual	NORML	NORML	---
Odor	scalar	*Visual	NORML	NORML	---
Emulsified Water	scalar	*Visual	>0.1	NEG	0.2%
Free Water	scalar	*Visual		NEG	1.0

FLUID PROPERTIES	method	limit/base	current	history1	history2
Visc @ 40°C	cSt	ASTM D445	42.8	46.3	48.1

SAMPLE IMAGES	method	limit/base	current	history1	history2
---------------	--------	------------	---------	----------	----------



### GRAPHS



**Laboratory** : WearCheck USA - 501 Madison Ave., Cary, NC 27513  
**Sample No.** : UCS06144412      **Received** : 10 Apr 2024  
**Lab Number** : **06144412**      **Tested** : 11 Apr 2024  
**Unique Number** : 10969220      **Diagnosed** : 12 Apr 2024 - Angela Borella  
**Test Package** : IND 2

**JEMCO-MAXAIR**  
 WEST FARGO, ND  
 US 58078  
 Contact: DALE K  
 dalek@jemco-maxair.com  
 T: (701)281-0362  
 F: x:

To discuss this sample report, contact Customer Service at 1-800-237-1369.  
 \* - Denotes test methods that are outside of the ISO 17025 scope of accreditation.  
 Statements of conformity to specifications are based on the simple acceptance decision rule (JCGM 106:2012)