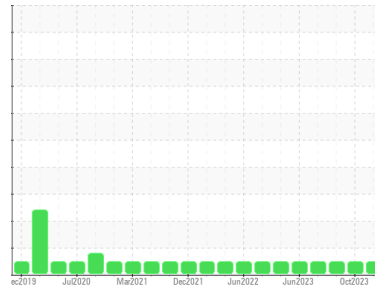




COOLANT REPORT

Machine Id
ZOKM02BE
 Component
Jacket Water Coolant
 Fluid
CONVENTIONAL COOLANT (350 GAL)

Sample Rating Trend



NORMAL



DIAGNOSIS

Recommendation

The fluid is suitable for further service.

Corrosion

All metal levels are normal indicating no corrosion in the cooling system.

Contaminants

There is no indication of any contamination in the coolant.

Coolant Condition

Glycol and nitrite levels are acceptable. The pH level of this fluid is within the acceptable limits.

SAMPLE INFORMATION

	method	limit/base	current	history1	history2
Sample Number	Client Info		WC0775188	WC0675535	WC0775386
Sample Date	Client Info		05 Apr 2024	12 Oct 2023	10 Jul 2023
Machine Age	hrs	Client Info	83555	79821	77704
Oil Age	hrs	Client Info	2555	2722	20101
Oil Changed	Client Info		Changed	Changed	Not Changed
Sample Status			NORMAL	NORMAL	NORMAL

PHYSICAL TEST RESULTS

	method	limit/base	current	history1	history2
Glycol Type	FT-IR		---	---	---
Specific Gravity	*ASTM D1298		1.068	1.069	1.069
pH	Scale 0-14	ASTM D1287	8.69	8.57	8.82
Nitrites	ppm	AP-053:2009	1688	1052	1124
Reserve Alkalinity	Scale 0-20	*ASTM D1121	---	---	---
Percentage Glycol	%	ASTM D3321	50.7	51.3	51.2
Freezing Point	°F	ASTM D3321	-35	-38	-38
Total Dissolved Solids			260.0	258.0	258.5
Carboxylate			n/a	n/a	fail

CORROSION INHIBITORS

	method	limit/base	current	history1	history2
Silicon	ppm	ASTM D6130	80	48	171
Phosphorus	ppm	ASTM D6130	24	5	40
Boron	ppm	ASTM D6130	397	331	687
Molybdenum	ppm	ASTM D6130	2	0	7

CORROSION

	method	limit/base	current	history1	history2	
Iron	ppm	ASTM D6130	>15	1	0	4
Aluminum	ppm	ASTM D6130	>10	0	<1	<1
Copper	ppm	ASTM D6130	>10	2	0	3
Lead	ppm	ASTM D6130	>10	0	0	<1
Tin	ppm	ASTM D6130	>10	0	0	1
Zinc	ppm	ASTM D6130		0	0	<1

CONTAMINANTS

	method	limit/base	current	history1	history2	
Chlorine	ppm	ASTM D6130		0	<1	21

CARRIER SALTS

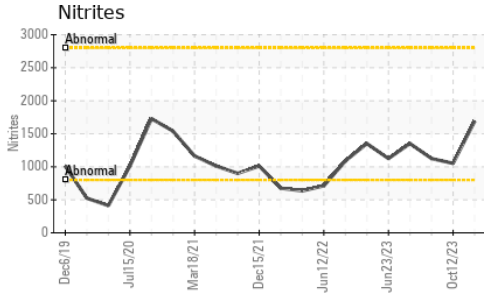
	method	limit/base	current	history1	history2	
Sodium	ppm	ASTM D6130		2311	1934	3509
Potassium	ppm	ASTM D6130		88	18	118

SCALE POTENTIAL

	method	limit/base	current	history1	history2	
Calcium	ppm	ASTM D6130		1	<1	1
Magnesium	ppm	ASTM D6130		0	<1	<1

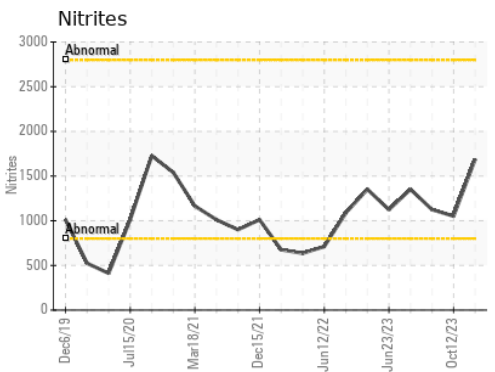
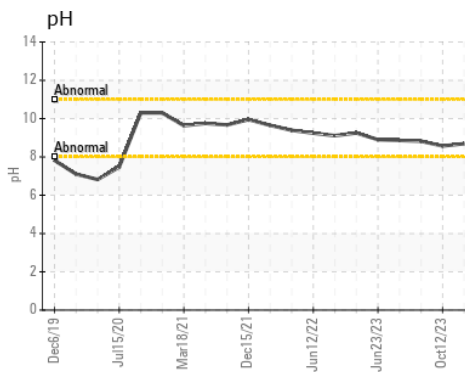
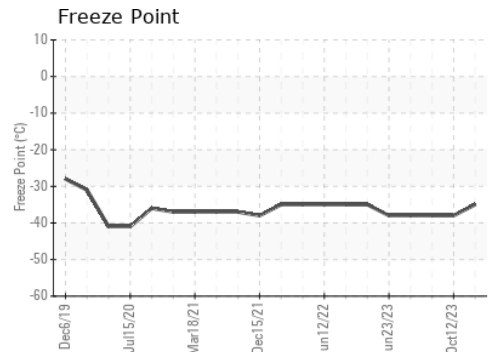
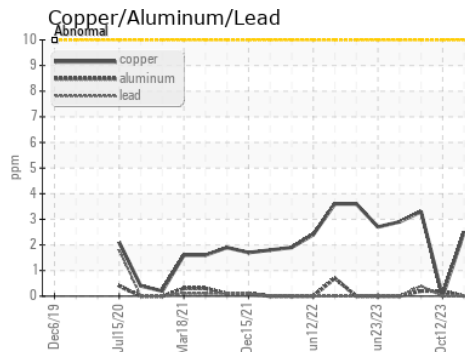
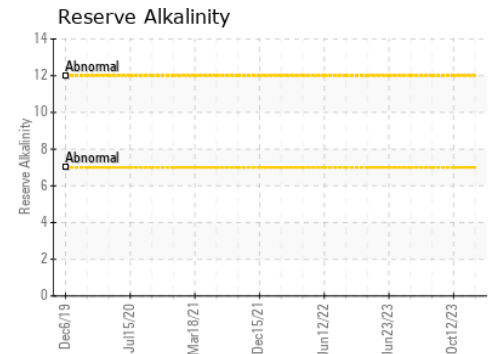
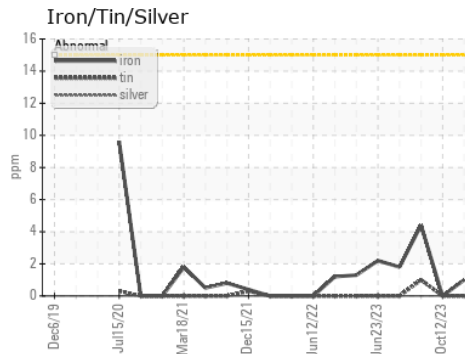


COOLANT REPORT



VISUAL	method	limit/base	current	history1	history2
Coolant Color	*Visual		Red	Pink	Pink
Coolant Appearance	*Visual	Clear	normal	normal	normal
Color					
Bottom					

GRAPHS



Certificate L2367

Laboratory : WearCheck USA - 501 Madison Ave., Cary, NC 27513
Sample No. : WC0775188
Lab Number : 06144808
Unique Number : 10969616
Test Package : COOL- (Additional Tests: BoilingPoint, COOL, GlycolType, ICP)
Received : 10 Apr 2024
Tested : 19 Apr 2024
Diagnosed : 19 Apr 2024 - Jonathan Hester

EDL NA Recips-Zook
 Zook Powerstation, 388 E. Main Street
 Leola, PA
 US 17540-1925
 Contact: Kevin Johnson
 kevin.johnson@edlenergy.com

To discuss this sample report, contact Customer Service at 1-800-237-1369.

* - Denotes test methods that are outside of the ISO 17025 scope of accreditation.

Statements of conformity to specifications are based on the simple acceptance decision rule (JCGM 106:2012)

T:
F: