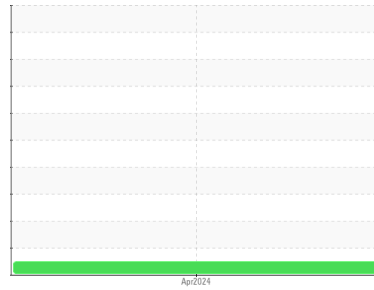




# FUEL REPORT

Sample Rating Trend



**WATER**



Machine Id

## CASWELL - PIEDMONT ELECTRIC

Component

Gasoline

Fluid

**GASOLINE (--- QTS)**

### DIAGNOSIS

#### ▲ Recommendation

This is a baseline read-out on the submitted sample. Please specify the type of fuel when submitting samples. Please note that this is a corrected copy for data entry and diagnostic comment updates for fuel type. Minimal tests available for gasoline.

#### Wear

All metal levels are normal indicating no corrosion in the system.

#### ▲ Contamination

There is a light concentration of water present in the gasoline. No other contaminants were detected in the gasoline.

#### Fluid Condition

NA

### SAMPLE INFORMATION

method	limit/base	current	history1	history2
Sample Number	Client Info	<b>WC06145506</b>	---	---
Sample Date	Client Info	<b>09 Apr 2024</b>	---	---
Machine Age	hrs Client Info	<b>0</b>	---	---
Oil Age	hrs Client Info	<b>0</b>	---	---
Oil Changed	Client Info	<b>N/A</b>	---	---
Sample Status		<b>MARGINAL</b>	---	---

### PHYSICAL PROPERTIES

method	limit/base	current	history1	history2
Fuel Color	text *Visual Screen	<b>Yellow</b>	---	---
ASTM Color	scalar *ASTM D1500	<b>L3.0</b>	---	---
Visc @ 40°C	cSt ASTM D445	<b>1.25</b>	---	---

### SULFUR CONTENT

method	limit/base	current	history1	history2
Sulfur	ppm ASTM D5185m	<b>8</b>	---	---
Sulfur (UVF)	ppm ASTM D5453	<b>2</b>	---	---

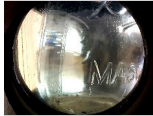

### CONTAMINANTS

method	limit/base	current	history1	history2	
Silicon	ppm ASTM D5185m	<1.0	<b>&lt;1</b>	---	---
Sodium	ppm ASTM D5185m	<0.1	<b>5</b>	---	---
Potassium	ppm ASTM D5185m	<0.1	<b>0</b>	---	---
Water	% ASTM D6304	<0.05	<b>▲ 0.182</b>	---	---
ppm Water	ppm ASTM D6304	<500	<b>1822</b>	---	---
% Gasoline	% *In-House	<0.50	<b>78.7</b>	---	---
% Biodiesel	% *In-House	<20.0	<b>0.0</b>	---	---

### HEAVY METALS

method	limit/base	current	history1	history2	
Aluminum	ppm ASTM D5185m	<0.1	<b>0</b>	---	---
Nickel	ppm ASTM D5185m	<0.1	<b>&lt;1</b>	---	---
Lead	ppm ASTM D5185m	<0.1	<b>&lt;1</b>	---	---
Vanadium	ppm ASTM D5185m	<0.1	<b>&lt;1</b>	---	---
Iron	ppm ASTM D5185m	<0.1	<b>0</b>	---	---
Calcium	ppm ASTM D5185m	<0.1	<b>&lt;1</b>	---	---
Magnesium	ppm ASTM D5185m	<0.1	<b>0</b>	---	---
Phosphorus	ppm ASTM D5185m	<0.1	<b>2</b>	---	---
Zinc	ppm ASTM D5185m	<0.1	<b>0</b>	---	---

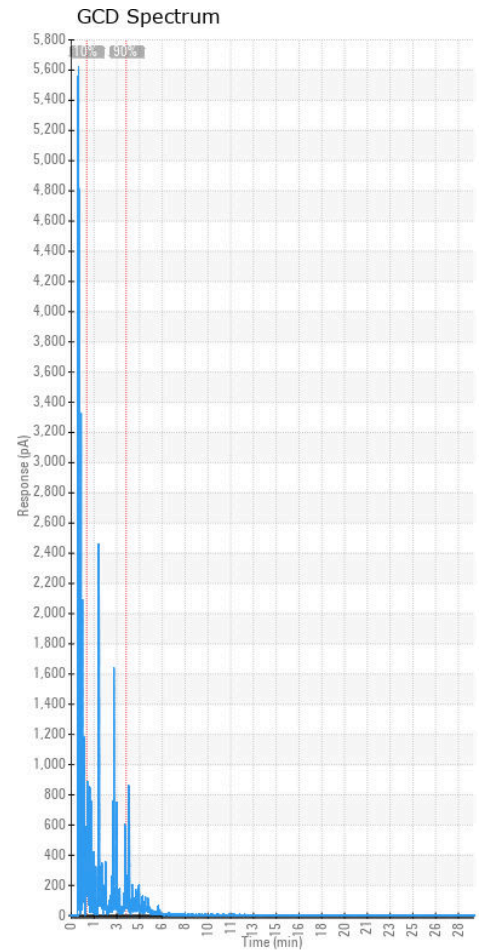
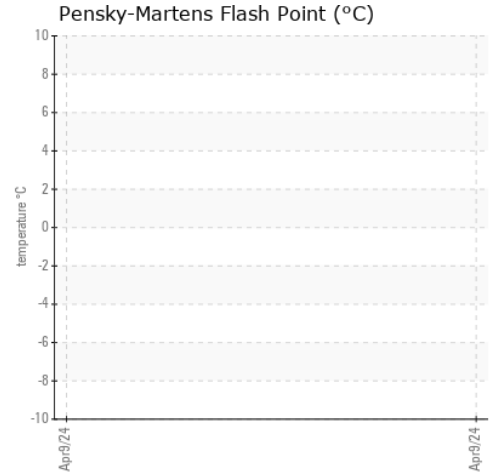
### SAMPLE IMAGES

method	limit/base	current	history1	history2
Color			no image	no image
Bottom			no image	no image



# FUEL REPORT

## GRAPHS



Certificate L2367

**Laboratory** : WearCheck USA - 501 Madison Ave., Cary, NC 27513  
**Sample No.** : WC06145506  
**Lab Number** : 06145506  
**Unique Number** : 10970314  
**Test Package** : DF-2 ( Additional Tests: API, CC Flash, Cetane, Color-ASTM, Fuel, GC-PercFuel, GCD, ICP, KF, Color)

**Received** : 10 Apr 2024  
**Tested** : 28 May 2024  
**Diagnosed** : 28 May 2024 - Doug Bogart

**COUCH OIL COMPANY**  
 2907 HILLSBOROUGH RD  
 DURHAM, NC  
 US 27705

Contact: JESSE BROWN  
 jesse@couchoilcompany.com

To discuss this sample report, contact Customer Service at 1-800-237-1369.

\* - Denotes test methods that are outside of the ISO 17025 scope of accreditation.

Statements of conformity to specifications are based on the simple acceptance decision rule (JCGM 106:2012)

T: (919)285-5408

F: