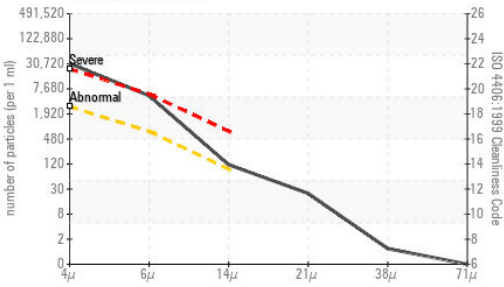


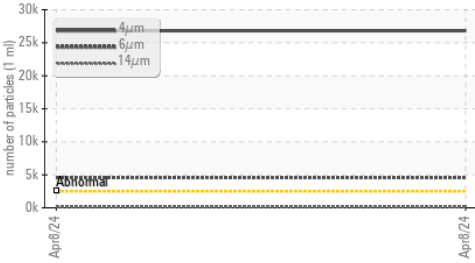


FUEL REPORT

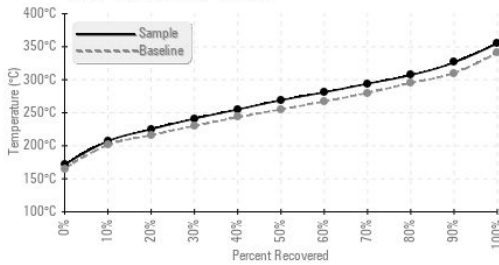
▲ Particle Count



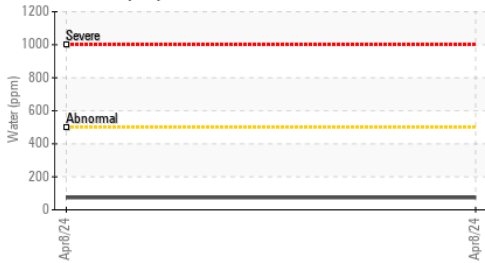
▲ Particle Trend



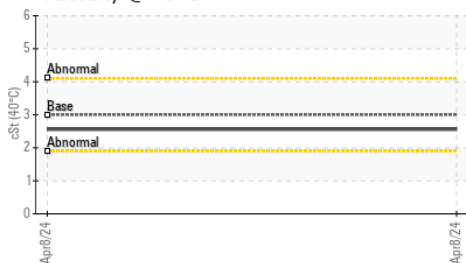
Fuel Distillation Curve



Water (KF)



Viscosity @ 40°C

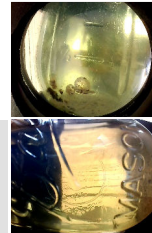


FLUID CLEANLINESS	method	limit/base	current	history1	history2
Particles >4µm	ASTM D7647	>2500	▲ 26819	---	---
Particles >6µm	ASTM D7647	>640	▲ 4588	---	---
Particles >14µm	ASTM D7647	>80	▲ 102	---	---
Particles >21µm	ASTM D7647	>20	21	---	---
Particles >38µm	ASTM D7647	>4	1	---	---
Particles >71µm	ASTM D7647	>3	0	---	---
Oil Cleanliness	ISO 4406 (c)	>18/16/13	▲ 22/19/14	---	---

MICROBIAL	method	limit/base	current	history1	history2
Bacteria	CFU/ml WC-Method	>=100000	0	---	---
Yeast	CFU/ml WC-Method	>=100000	10	---	---
Mold	Colonies WC-Method	MODER	---	---	---

HEAVY METALS	method	limit/base	current	history1	history2
Aluminum	ppm ASTM D5185m	<0.1	0	---	---
Nickel	ppm ASTM D5185m	<0.1	0	---	---
Lead	ppm ASTM D5185m	<0.1	0	---	---
Vanadium	ppm ASTM D5185m	<0.1	<1	---	---
Iron	ppm ASTM D5185m	<0.1	0	---	---
Calcium	ppm ASTM D5185m	<0.1	0	---	---
Magnesium	ppm ASTM D5185m	<0.1	0	---	---
Phosphorus	ppm ASTM D5185m	<0.1	0	---	---
Zinc	ppm ASTM D5185m	<0.1	0	---	---

SAMPLE IMAGES	method	limit/base	current	history1	history2
Color				no image	no image
Bottom				no image	no image



Certificate L2367

Laboratory : WearCheck USA - 501 Madison Ave., Cary, NC 27513

Sample No. : WC06145508

Lab Number : 06145508

Unique Number : 10970316

Test Package : DF-2 (Additional Tests: BACTERIA, Fuel, Screen)

To discuss this sample report, contact Customer Service at 1-800-237-1369.

* - Denotes test methods that are outside of the ISO 17025 scope of accreditation.

Statements of conformity to specifications are based on the simple acceptance decision rule (JCGM 106:2012)

Received : 10 Apr 2024

Tested : 26 Apr 2024

Diagnosed : 26 Apr 2024 - Angela Borella

COUCH OIL COMPANY

2907 HILLSBOROUGH RD

DURHAM, NC

US 27705

Contact: JESSE BROWN

jesse@couchoilcompany.com

T: (919)285-5408

F: