



# FUEL REPORT

Sample Rating Trend



ISO



Machine Id

## SHOP GEN - PIEDMONT ELECTRIC

Component

Diesel Fuel

Fluid

No.2 DIESEL FUEL (ULTRALOW SULPHUR) (--- QTS)

### DIAGNOSIS

#### Recommendation

Laboratory test indicate that this fuel is suitable for use and meets all test requirements.

#### Corrosion

All metal levels are normal indicating no corrosion in the cooling system.

#### Contaminants

There is a moderate amount of particulates present in the fuel.

#### Fuel Condition

All laboratory tests indicate that this sample meets specifications for No.2 diesel fuel, low sulfur (US EPA/CGSB-3.517-3 type B).

### SAMPLE INFORMATION

	method	limit/base	current	history1	history2
Sample Number	Client Info		<b>WC06145515</b>	---	---
Sample Date	Client Info		<b>09 Apr 2024</b>	---	---
Machine Age	hrs	Client Info	<b>0</b>	---	---
Sample Status			<b>ATTENTION</b>	---	---

### PHYSICAL PROPERTIES

	method	limit/base	current	history1	history2
Fuel Color	text	*Visual Screen	Yellow	<b>Red</b>	---
ASTM Color	scalar	*ASTM D1500		<b>L4.5</b>	---
Visc @ 40°C	cSt	ASTM D445	3.0	<b>2.46</b>	---
Pensky-Martens Flash Point	°C	*PMCC Calculated	52	<b>63</b>	---

### SULFUR CONTENT

	method	limit/base	current	history1	history2
Sulfur	ppm	ASTM D5185m	10	<b>0</b>	---
Sulfur (UVF)	ppm	ASTM D5453		<b>10</b>	---

### DISTILLATION

	method	limit/base	current	history1	history2
Initial Boiling Point	°C	ASTM D86	165	<b>174</b>	---
5% Distillation Point	°C	ASTM D86		<b>197</b>	---
10% Distill Point	°C	ASTM D86	201	<b>206</b>	---
15% Distillation Point	°C	ASTM D86		<b>215</b>	---
20% Distill Point	°C	ASTM D86	216	<b>223</b>	---
30% Distill Point	°C	ASTM D86	230	<b>238</b>	---
40% Distill Point	°C	ASTM D86	243	<b>251</b>	---
50% Distill Point	°C	ASTM D86	255	<b>265</b>	---
60% Distill Point	°C	ASTM D86	267	<b>277</b>	---
70% Distill Point	°C	ASTM D86	280	<b>290</b>	---
80% Distill Point	°C	ASTM D86	295	<b>305</b>	---
85% Distillation Point	°C	ASTM D86		<b>316</b>	---
90% Distill Point	°C	ASTM D86	310	<b>326</b>	---
95% Distillation Point	°C	ASTM D86		<b>343</b>	---
Final Boiling Point	°C	ASTM D86	341	<b>357</b>	---

### IGNITION QUALITY

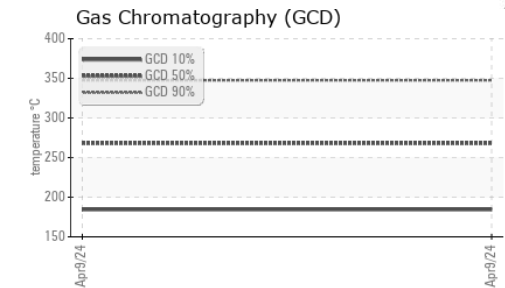
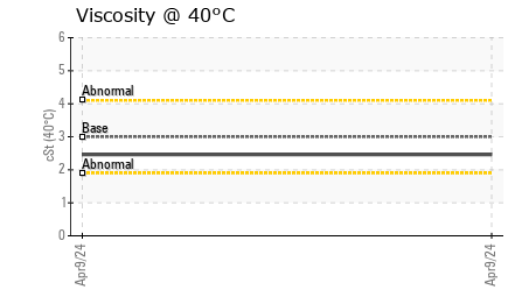
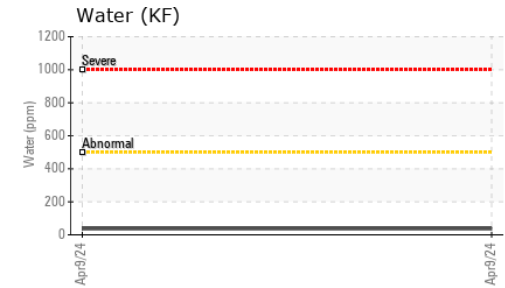
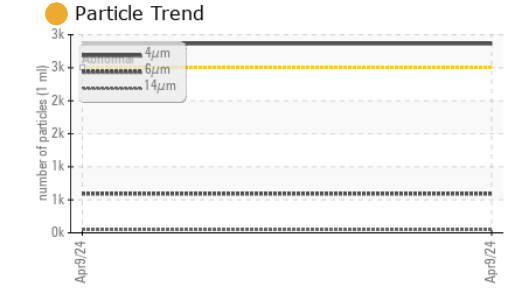
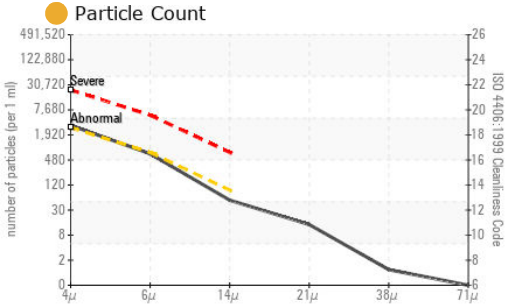
	method	limit/base	current	history1	history2
API Gravity	ASTM D7777	37.7	<b>36</b>	---	---
Cetane Index	ASTM D4737	<40.0	<b>49</b>	---	---

### CONTAMINANTS

	method	limit/base	current	history1	history2
Silicon	ppm	ASTM D5185m	<1.0	<b>&lt;1</b>	---
Sodium	ppm	ASTM D5185m	<0.1	<b>1</b>	---
Potassium	ppm	ASTM D5185m	<0.1	<b>0</b>	---
Water	%	ASTM D6304	<0.05	<b>0.003</b>	---
ppm Water	ppm	ASTM D6304	<500	<b>37</b>	---
% Gasoline	%	*In-House	<0.50	<b>0.0</b>	---
% Biodiesel	%	*In-House	<20.0	<b>0.0</b>	---



# FUEL REPORT

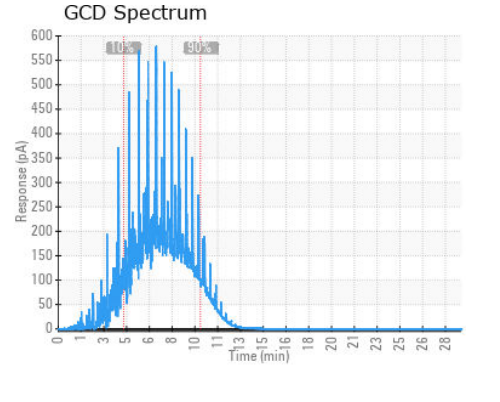
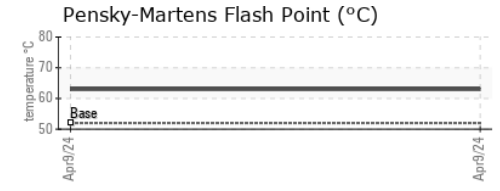
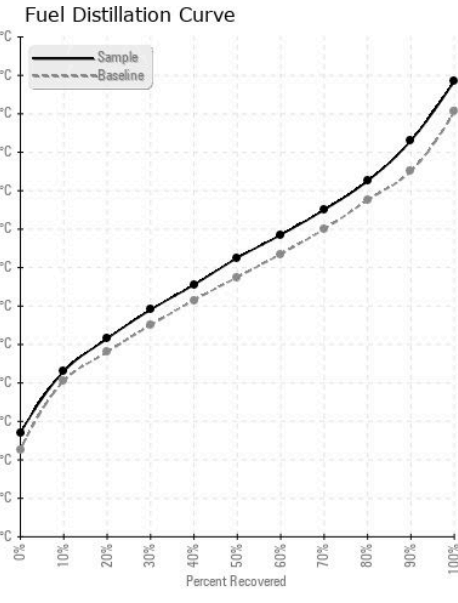


FLUID CLEANLINESS	method	limit/base	current	history1	history2
Particles >4µm	ASTM D7647	>2500	<b>2864</b>	---	---
Particles >6µm	ASTM D7647	>640	<b>593</b>	---	---
Particles >14µm	ASTM D7647	>80	<b>46</b>	---	---
Particles >21µm	ASTM D7647	>20	<b>12</b>	---	---
Particles >38µm	ASTM D7647	>4	<b>1</b>	---	---
Particles >71µm	ASTM D7647	>3	<b>0</b>	---	---
Oil Cleanliness	ISO 4406 (c)	>18/16/13	<b>19/16/13</b>	---	---

HEAVY METALS	method	limit/base	current	history1	history2
Aluminum	ppm	ASTM D5185m <0.1	<b>0</b>	---	---
Nickel	ppm	ASTM D5185m <0.1	<b>0</b>	---	---
Lead	ppm	ASTM D5185m <0.1	<b>0</b>	---	---
Vanadium	ppm	ASTM D5185m <0.1	<b>&lt;1</b>	---	---
Iron	ppm	ASTM D5185m <0.1	<b>0</b>	---	---
Calcium	ppm	ASTM D5185m <0.1	<b>0</b>	---	---
Magnesium	ppm	ASTM D5185m <0.1	<b>0</b>	---	---
Phosphorus	ppm	ASTM D5185m <0.1	<b>&lt;1</b>	---	---
Zinc	ppm	ASTM D5185m <0.1	<b>0</b>	---	---

SAMPLE IMAGES	method	limit/base	current	history1	history2
Color				no image	no image
Bottom				no image	no image

## GRAPHS



Certificate L2367

Laboratory : WearCheck USA - 501 Madison Ave., Cary, NC 27513

Sample No. : WC06145515

Lab Number : **06145515**

Unique Number : 10970323

Test Package : DF-2 ( Additional Tests: Fuel, Screen )

To discuss this sample report, contact Customer Service at 1-800-237-1369.

\* - Denotes test methods that are outside of the ISO 17025 scope of accreditation.

Statements of conformity to specifications are based on the simple acceptance decision rule (JCGM 106:2012)

Received : 10 Apr 2024

Tested : 26 Apr 2024

Diagnosed : 26 Apr 2024 - Angela Borella

COUCH OIL COMPANY

2907 HILLSBOROUGH RD

DURHAM, NC

US 27705

Contact: JESSE BROWN

jesse@couchoilcompany.com

T: (919)285-5408

F: