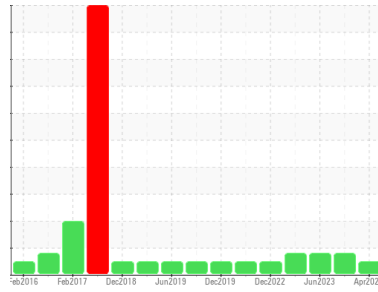




OIL ANALYSIS REPORT

Sample Rating Trend



NORMAL



Machine Id
DRUM 008 (S/N KY004907)
 Component
Gearbox
 Fluid
7 EP (1 PNT)

DIAGNOSIS

Recommendation

Resample at the next service interval to monitor.

Wear

All component wear rates are normal.

Contamination

The water content is negligible. There is no indication of any contamination in the oil.

Fluid Condition

The AN level is acceptable for this fluid. The condition of the oil is suitable for further service.

SAMPLE INFORMATION		method	limit/base	current	history1	history2
Sample Number	Client Info			RP0037324	RP0037325	RP0021786
Sample Date	Client Info			10 Apr 2024	27 Mar 2024	28 Jun 2023
Machine Age	hrs	Client Info		0	0	0
Oil Age	hrs	Client Info		0	0	0
Oil Changed	Client Info			N/A	N/A	N/A
Sample Status				NORMAL	ABNORMAL	ABNORMAL

WEAR METALS		method	limit/base	current	history1	history2
Iron	ppm	ASTM D5185m	>200	51	▲ 255	▲ 352
Chromium	ppm	ASTM D5185m	>15	1	3	3
Nickel	ppm	ASTM D5185m	>15	<1	1	<1
Titanium	ppm	ASTM D5185m		1	<1	0
Silver	ppm	ASTM D5185m		<1	<1	0
Aluminum	ppm	ASTM D5185m	>25	1	1	<1
Lead	ppm	ASTM D5185m	>100	1	1	0
Copper	ppm	ASTM D5185m	>200	<1	1	<1
Tin	ppm	ASTM D5185m	>25	1	1	0
Vanadium	ppm	ASTM D5185m		<1	<1	0
Cadmium	ppm	ASTM D5185m		1	1	0

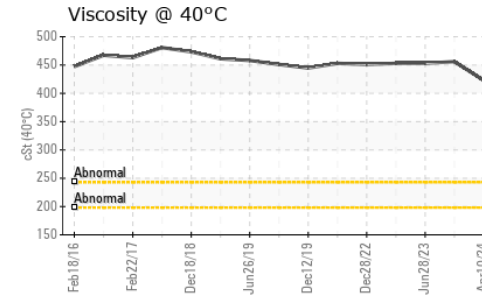
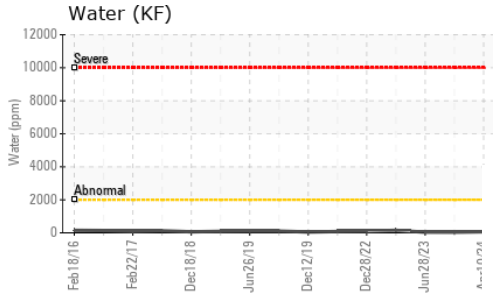
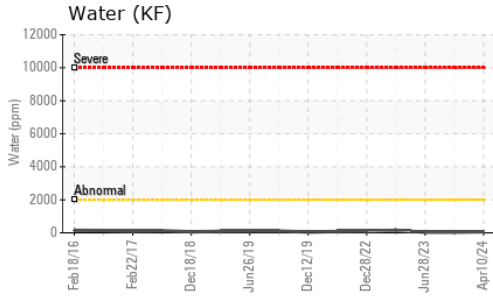
ADDITIVES		method	limit/base	current	history1	history2
Boron	ppm	ASTM D5185m		17	24	25
Barium	ppm	ASTM D5185m		51	3	4
Molybdenum	ppm	ASTM D5185m		<1	1	<1
Manganese	ppm	ASTM D5185m		1	3	2
Magnesium	ppm	ASTM D5185m		<1	<1	<1
Calcium	ppm	ASTM D5185m		15	7	1
Phosphorus	ppm	ASTM D5185m		189	217	237
Zinc	ppm	ASTM D5185m		4	3	3

CONTAMINANTS		method	limit/base	current	history1	history2
Silicon	ppm	ASTM D5185m	>50	2	3	2
Sodium	ppm	ASTM D5185m		<1	0	<1
Potassium	ppm	ASTM D5185m	>20	1	2	<1
Water	%	ASTM D6304	>0.2	0.006	0.003	0.003
ppm Water	ppm	ASTM D6304	>2000	62	32	36.8

FLUID DEGRADATION		method	limit/base	current	history1	history2
Acid Number (AN)	mg KOH/g	ASTM D8045		0.45	0.58	0.57

VISUAL		method	limit/base	current	history1	history2
White Metal	scalar	*Visual	NONE	NONE	NONE	NONE
Yellow Metal	scalar	*Visual	NONE	NONE	NONE	NONE
Precipitate	scalar	*Visual	NONE	NONE	NONE	NONE
Silt	scalar	*Visual	NONE	NONE	NONE	NONE
Debris	scalar	*Visual	NONE	LIGHT	LIGHT	NONE
Sand/Dirt	scalar	*Visual	NONE	NONE	NONE	NONE
Appearance	scalar	*Visual	NORML	NORML	NORML	NORML
Odor	scalar	*Visual	NORML	NORML	NORML	NORML
Emulsified Water	scalar	*Visual	>0.2	NEG	NEG	NEG
Free Water	scalar	*Visual		NEG	NEG	NEG

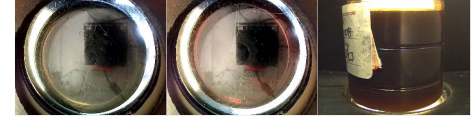
OIL ANALYSIS REPORT



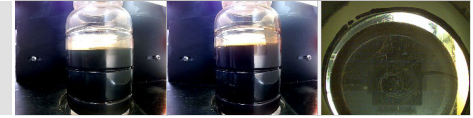
FLUID PROPERTIES	method	limit/base	current	history1	history2
Visc @ 40°C	cSt	ASTM D445	423	456	453

SAMPLE IMAGES	method	limit/base	current	history1	history2
---------------	--------	------------	---------	----------	----------

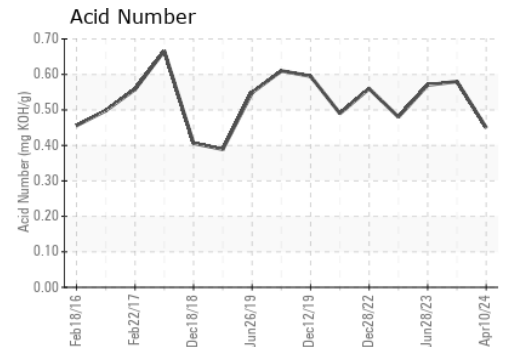
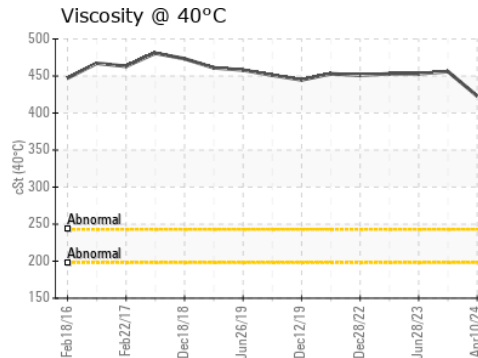
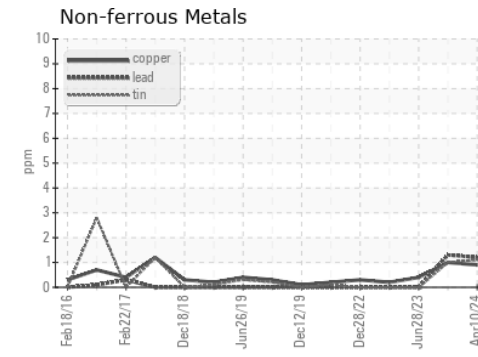
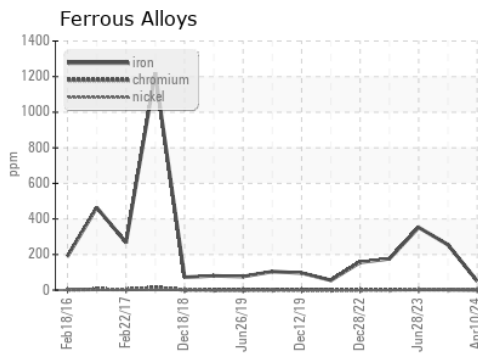
Color



Bottom



GRAPHS



Certificate L2367

Laboratory : WearCheck USA - 501 Madison Ave., Cary, NC 27513
Sample No. : RP0037324
Lab Number : 06145959
Unique Number : 10976037
Test Package : IND 2

Received : 11 Apr 2024
Tested : 12 Apr 2024
Diagnosed : 12 Apr 2024 - Wes Davis

HOLLINGSWORTH & VOSE CO
 1115 SE CRYSTAL LAKE DR
 CORVALLIS, OR
 US 97333
 Contact: Jon Ayers
 jonathan.ayers@hovo.com
 T: (541)738-5399
 F: x:

To discuss this sample report, contact Customer Service at 1-800-237-1369.

* - Denotes test methods that are outside of the ISO 17025 scope of accreditation.

Statements of conformity to specifications are based on the simple acceptance decision rule (JCGM 106:2012)