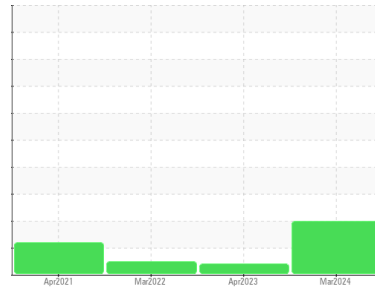




OIL ANALYSIS REPORT

Sample Rating Trend



WATER



Machine Id
KAESER 6303979 - SUKANO POLYMERS CORP (S/N 1132)
 Component
Compressor
 Fluid
KAESER SIGMA (OEM) S-460 (5 GAL)

DIAGNOSIS

▲ Recommendation

The filter change at the time of sampling has been noted. Resample at the next service interval to monitor.

Wear

All component wear rates are normal.

▲ Contamination

Moderate concentration of visible dirt/debris present in the oil. There is a light concentration of water present in the oil.

Fluid Condition

The AN level is acceptable for this fluid. The condition of the oil is suitable for further service.

SAMPLE INFORMATION

| | method | limit/base | current | history1 | history2 |
|---------------|-------------|-------------|--------------------|-------------|-------------|
| Sample Number | Client Info | | WC0915287 | WC0795282 | WC0662269 |
| Sample Date | Client Info | | 27 Mar 2024 | 17 Apr 2023 | 28 Mar 2022 |
| Machine Age | hrs | Client Info | 14541 | 10693 | 7748 |
| Oil Age | hrs | Client Info | 1500 | 4000 | 771 |
| Oil Changed | Client Info | | Not Chngd | N/A | Not Chngd |
| Sample Status | | | ABNORMAL | ABNORMAL | NORMAL |

WEAR METALS

| | method | limit/base | current | history1 | history2 |
|----------|--------|-----------------|--------------|----------|----------|
| Iron | ppm | ASTM D5185m >50 | 3 | <1 | <1 |
| Chromium | ppm | ASTM D5185m >10 | <1 | 0 | 0 |
| Nickel | ppm | ASTM D5185m >3 | 1 | 0 | 0 |
| Titanium | ppm | ASTM D5185m >3 | 1 | 0 | 2 |
| Silver | ppm | ASTM D5185m >2 | 0 | <1 | 0 |
| Aluminum | ppm | ASTM D5185m >10 | 1 | 0 | <1 |
| Lead | ppm | ASTM D5185m >10 | 3 | 0 | <1 |
| Copper | ppm | ASTM D5185m >50 | 6 | 2 | 3 |
| Tin | ppm | ASTM D5185m >10 | 1 | <1 | 0 |
| Antimony | ppm | ASTM D5185m | --- | --- | --- |
| Vanadium | ppm | ASTM D5185m | <1 | 0 | 0 |
| Cadmium | ppm | ASTM D5185m | 1 | 0 | 0 |

ADDITIVES

| | method | limit/base | current | history1 | history2 |
|------------|--------|----------------|--------------|----------|----------|
| Boron | ppm | ASTM D5185m | 0 | 0 | <1 |
| Barium | ppm | ASTM D5185m 90 | 3 | 0 | 0 |
| Molybdenum | ppm | ASTM D5185m | <1 | 0 | 0 |
| Manganese | ppm | ASTM D5185m | <1 | <1 | 0 |
| Magnesium | ppm | ASTM D5185m 90 | 53 | 52 | 62 |
| Calcium | ppm | ASTM D5185m 2 | 6 | <1 | <1 |
| Phosphorus | ppm | ASTM D5185m | 7 | 5 | 2 |
| Zinc | ppm | ASTM D5185m | 82 | 63 | 52 |
| Sulfur | ppm | ASTM D5185m | 27980 | 22138 | 14775 |

CONTAMINANTS

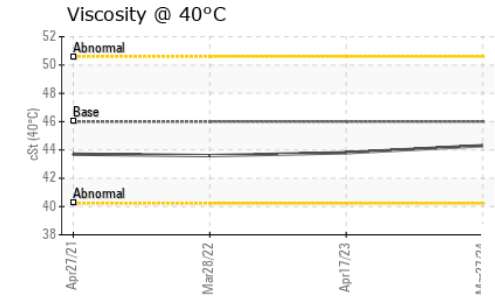
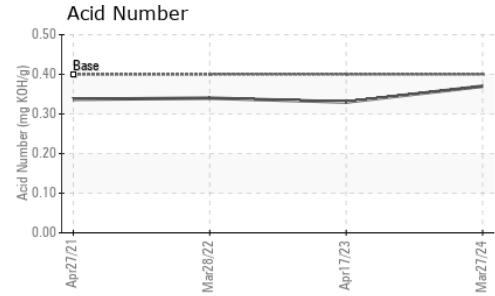
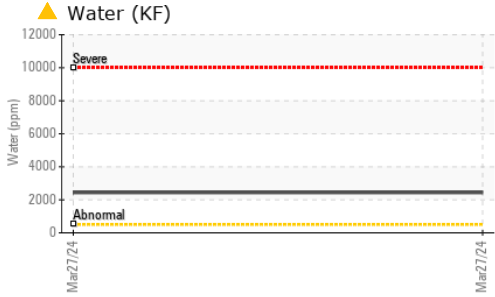
| | method | limit/base | current | history1 | history2 |
|-----------|--------|------------------|----------------|----------|----------|
| Silicon | ppm | ASTM D5185m >25 | 1 | 0 | 1 |
| Sodium | ppm | ASTM D5185m | 23 | 27 | 24 |
| Potassium | ppm | ASTM D5185m >20 | 6 | 6 | 7 |
| Water | % | ASTM D6304 >0.05 | ▲ 0.244 | --- | --- |
| ppm Water | ppm | ASTM D6304 >500 | ▲ 2440 | --- | --- |

FLUID DEGRADATION

| | method | limit/base | current | history1 | history2 |
|------------------|----------|----------------|-------------|----------|----------|
| Acid Number (AN) | mg KOH/g | ASTM D8045 0.4 | 0.37 | 0.33 | 0.34 |



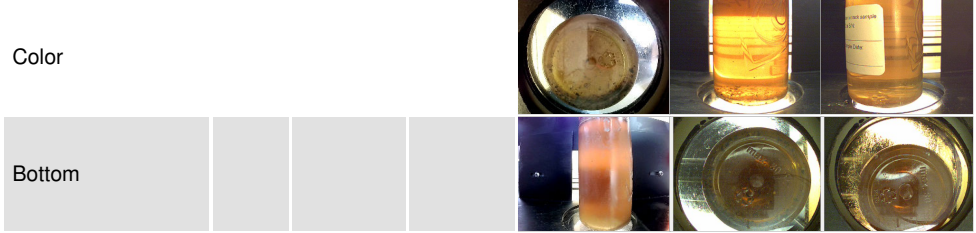
OIL ANALYSIS REPORT



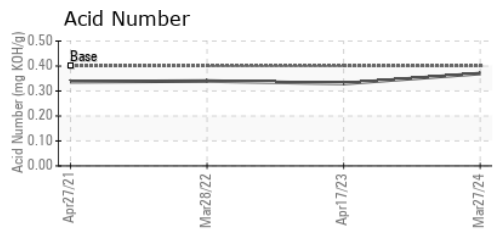
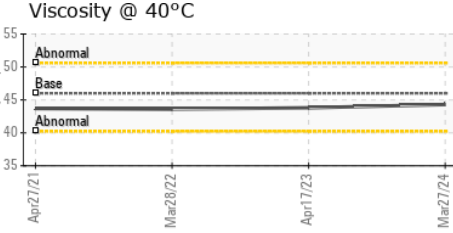
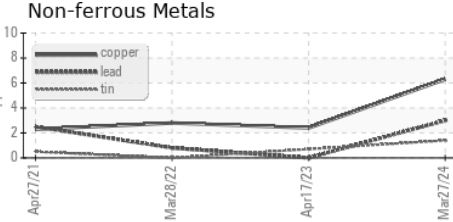
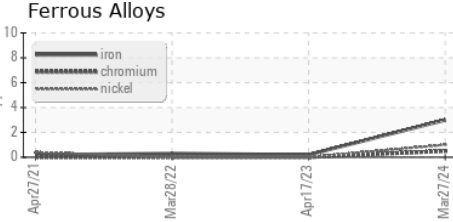
| VISUAL | method | limit/base | current | history1 | history2 |
|------------------|--------|------------|---------|----------|---------------|
| White Metal | scalar | *Visual | NONE | NONE | NONE |
| Yellow Metal | scalar | *Visual | NONE | NONE | NONE |
| Precipitate | scalar | *Visual | NONE | NONE | NONE |
| Silt | scalar | *Visual | NONE | NONE | NONE |
| Debris | scalar | *Visual | NONE | ▲ MODER | ▲ MODER LIGHT |
| Sand/Dirt | scalar | *Visual | NONE | NONE | NONE |
| Appearance | scalar | *Visual | NORML | NORML | NORML |
| Odor | scalar | *Visual | NORML | NORML | NORML |
| Emulsified Water | scalar | *Visual | >0.05 | 0.2% | NEG |
| Free Water | scalar | *Visual | | NEG | NEG |

| FLUID PROPERTIES | method | limit/base | current | history1 | history2 |
|------------------|--------|--------------|---------|----------|----------|
| Visc @ 40°C | cSt | ASTM D445 46 | 44.3 | 43.8 | 43.6 |

| SAMPLE IMAGES | method | limit/base | current | history1 | history2 |
|---------------|--------|------------|---------|----------|----------|
|---------------|--------|------------|---------|----------|----------|



GRAPHS



Laboratory : WearCheck USA - 501 Madison Ave., Cary, NC 27513
Sample No. : WC0915287 **Received** : 11 Apr 2024
Lab Number : 06145975 **Tested** : 15 Apr 2024
Unique Number : 10976053 **Diagnosed** : 15 Apr 2024 - Don Baldrige
Test Package : IND 2 (Additional Tests: KF)

ELEVATED INDUSTRIAL SOLUTIONS - IIS
 302 HUGHES ST
 FOUNTAIN INN, SC
 US 29644
 Contact: DARRIN WARD
 dward@elevatedindustrial.com

To discuss this sample report, contact Customer Service at 1-800-237-1369.

* - Denotes test methods that are outside of the ISO 17025 scope of accreditation.

Statements of conformity to specifications are based on the simple acceptance decision rule (JCGM 106:2012)

F: (864)862-7653