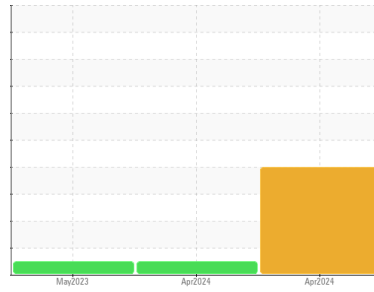




FUEL REPORT

Sample Rating Trend



WATER



Machine Id
JCB G125 RST4F FG21 (S/N 2656693)
 Component
Diesel Fuel
 Fluid
No.2 DIESEL FUEL (ULTRALOW SULPHUR) (--- GAL)

DIAGNOSIS

▲ Recommendation

NOTE: one of two samples received with same ID.

▲ Corrosion

The iron level is abnormal.

▲ Contaminants

Appearance is unacceptable. Free water present.

● Fuel Condition

Additive levels indicate the addition of oil.

SAMPLE INFORMATION		method	limit/base	current	history1	history2
Sample Number	Client Info			JCB06146288	JCB005573	JCB005574
Sample Date	Client Info			06 Apr 2024	05 Apr 2024	26 May 2023
Machine Age	hrs	Client Info		11	11	8
Sample Status				ABNORMAL	NORMAL	NORMAL

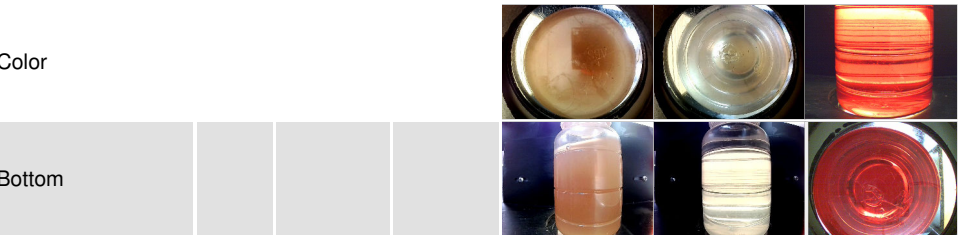
PHYSICAL PROPERTIES		method	limit/base	current	history1	history2
Visc @ 40°C	cSt	ASTM D445	3.0	3.21	3.11	2.86

SULFUR CONTENT		method	limit/base	current	history1	history2
Sulfur	ppm	ASTM D5185m	10	0	0	0

CONTAMINANTS		method	limit/base	current	history1	history2
Silicon	ppm	ASTM D5185m	<1.0	4	0	0
Sodium	ppm	ASTM D5185m	<0.1	0	0	0
Potassium	ppm	ASTM D5185m	<0.1	1	<1	<1
Water	%	ASTM D6304	<0.05	0.009	0.002	0.003
ppm Water	ppm	ASTM D6304	<500	91	24	31.3

HEAVY METALS		method	limit/base	current	history1	history2
Aluminum	ppm	ASTM D5185m	<0.1	1	1	0
Nickel	ppm	ASTM D5185m	<0.1	<1	<1	0
Lead	ppm	ASTM D5185m	<0.1	1	1	0
Vanadium	ppm	ASTM D5185m	<0.1	<1	<1	0
Iron	ppm	ASTM D5185m	<0.1	▲ 22	<1	0
Calcium	ppm	ASTM D5185m	<0.1	● 116	0	0
Magnesium	ppm	ASTM D5185m	<0.1	<1	<1	0
Phosphorus	ppm	ASTM D5185m	<0.1	3	3	0
Zinc	ppm	ASTM D5185m	<0.1	6	2	0

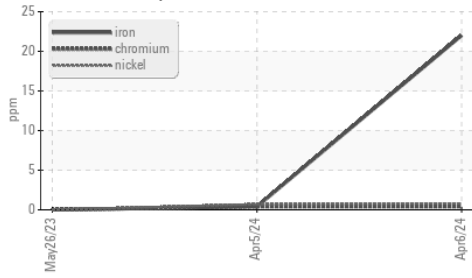
SAMPLE IMAGES		method	limit/base	current	history1	history2
---------------	--	--------	------------	---------	----------	----------



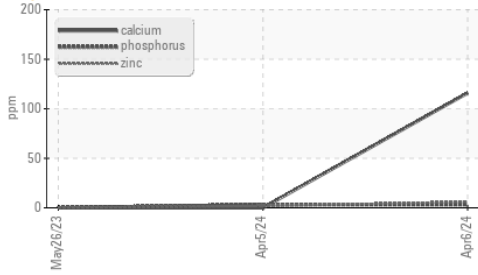


FUEL REPORT

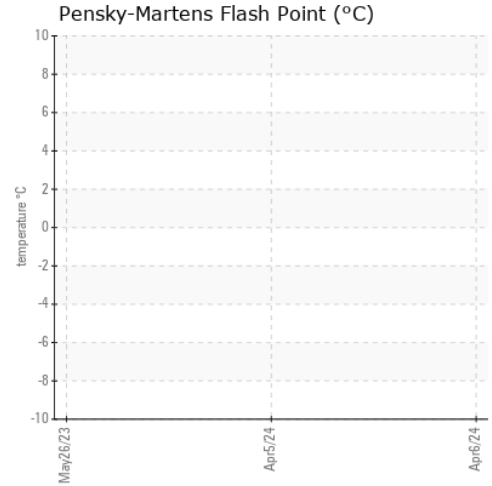
▲ Ferrous Alloys



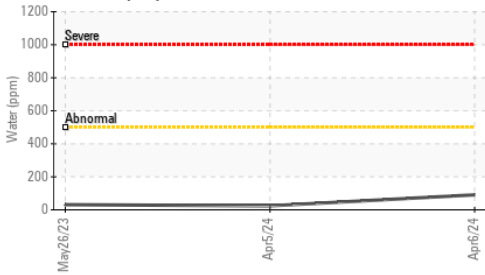
● Additives



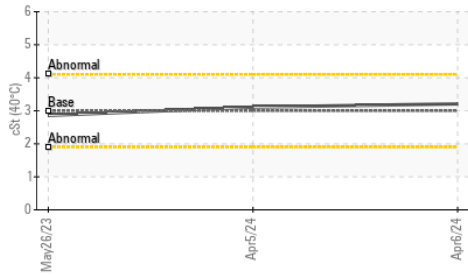
GRAPHS



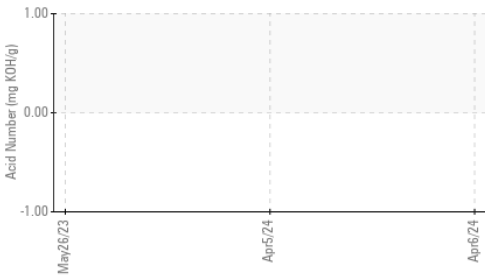
Water (KF)



Viscosity @ 40°C



Acid Number



Certificate L2367

Laboratory : WearCheck USA - 501 Madison Ave., Cary, NC 27513

Sample No. : JCB06146288

Lab Number : 06146288

Unique Number : 10976366

Test Package : MOB 1 (Additional Tests: Bacteria, KF)

To discuss this sample report, contact Customer Service at 1-800-237-1369.

* - Denotes test methods that are outside of the ISO 17025 scope of accreditation.

Statements of conformity to specifications are based on the simple acceptance decision rule (JCGM 106:2012)

Received : 11 Apr 2024

Tested : 17 Apr 2024

Diagnosed : 17 Apr 2024 - Doug Bogart

MERIDIAN UTILITY EQUIPMENT SALES

1315 VINCI AVE

SACRAMENTO, CA

US 95838

Contact: JOSHUA MURCH

JOSH.MURCH@MERIDIANPACIFIC.COM

T: (916)308-4430

F: