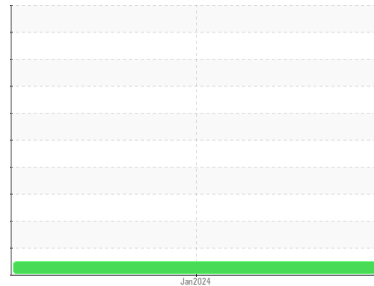




# OIL ANALYSIS REPORT

## Sample Rating Trend



**NORMAL**



Machine Id

**HLT-7**

Component

**Hydraulic System**

Fluid

**MOBIL DTE 10 EXCEL 32 (5 GAL)**

### DIAGNOSIS

#### Recommendation

Resample at the next service interval to monitor.

#### Wear

All component wear rates are normal.

#### Contamination

There is no indication of any contamination in the oil. The amount and size of particulates present in the system are acceptable.

#### Fluid Condition

The AN level is acceptable for this fluid. The condition of the oil is suitable for further service.

SAMPLE INFORMATION		method	limit/base	current	history1	history2
Sample Number	Client Info			<b>PH0003248</b>	---	---
Sample Date	Client Info			<b>12 Jan 2024</b>	---	---
Machine Age	hrs	Client Info		<b>91</b>	---	---
Oil Age	hrs	Client Info		<b>91</b>	---	---
Oil Changed	Client Info			<b>Not Chngd</b>	---	---
Sample Status				<b>NORMAL</b>	---	---

CONTAMINATION		method	limit/base	current	history1	history2
Water	WC Method		>0.05	<b>NEG</b>	---	---

WEAR METALS		method	limit/base	current	history1	history2
Iron	ppm	ASTM D5185m	>20	<b>&lt;1</b>	---	---
Chromium	ppm	ASTM D5185m	>20	<b>&lt;1</b>	---	---
Nickel	ppm	ASTM D5185m	>20	<b>2</b>	---	---
Titanium	ppm	ASTM D5185m		<b>&lt;1</b>	---	---
Silver	ppm	ASTM D5185m		<b>&lt;1</b>	---	---
Aluminum	ppm	ASTM D5185m	>20	<b>1</b>	---	---
Lead	ppm	ASTM D5185m	>20	<b>2</b>	---	---
Copper	ppm	ASTM D5185m	>20	<b>2</b>	---	---
Tin	ppm	ASTM D5185m	>20	<b>1</b>	---	---
Vanadium	ppm	ASTM D5185m		<b>&lt;1</b>	---	---
Cadmium	ppm	ASTM D5185m		<b>1</b>	---	---

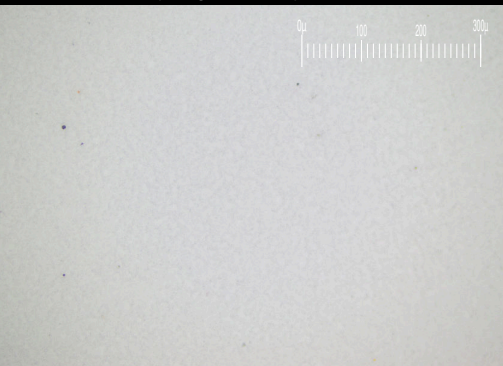
ADDITIVES		method	limit/base	current	history1	history2
Boron	ppm	ASTM D5185m		<b>&lt;1</b>	---	---
Barium	ppm	ASTM D5185m		<b>&lt;1</b>	---	---
Molybdenum	ppm	ASTM D5185m		<b>&lt;1</b>	---	---
Manganese	ppm	ASTM D5185m		<b>&lt;1</b>	---	---
Magnesium	ppm	ASTM D5185m		<b>&lt;1</b>	---	---
Calcium	ppm	ASTM D5185m	120	<b>111</b>	---	---
Phosphorus	ppm	ASTM D5185m	475	<b>459</b>	---	---
Zinc	ppm	ASTM D5185m		<b>28</b>	---	---
Sulfur	ppm	ASTM D5185m	1275	<b>1551</b>	---	---

CONTAMINANTS		method	limit/base	current	history1	history2
Silicon	ppm	ASTM D5185m	>15	<b>&lt;1</b>	---	---
Sodium	ppm	ASTM D5185m		<b>2</b>	---	---
Potassium	ppm	ASTM D5185m	>20	<b>&lt;1</b>	---	---

FLUID CLEANLINESS		method	limit/base	current	history1	history2
Particles >4µm		ASTM D7647	>10000	<b>226</b>	---	---
Particles >6µm		ASTM D7647	>2500	<b>30</b>	---	---
Particles >14µm		ASTM D7647	>320	<b>4</b>	---	---
Particles >21µm		ASTM D7647	>80	<b>1</b>	---	---
Particles >38µm		ASTM D7647	>20	<b>0</b>	---	---
Particles >71µm		ASTM D7647	>4	<b>0</b>	---	---
Oil Cleanliness		ISO 4406 (c)	>20/18/15	<b>15/12/9</b>	---	---

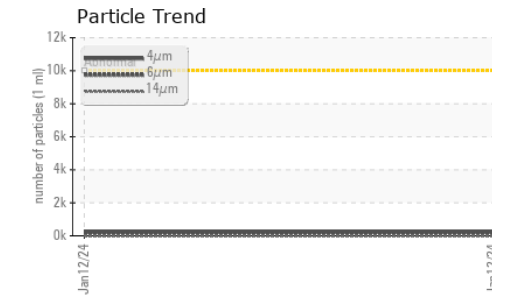
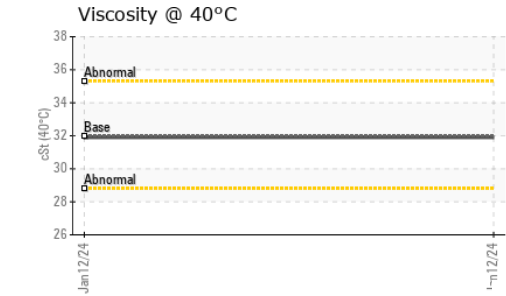
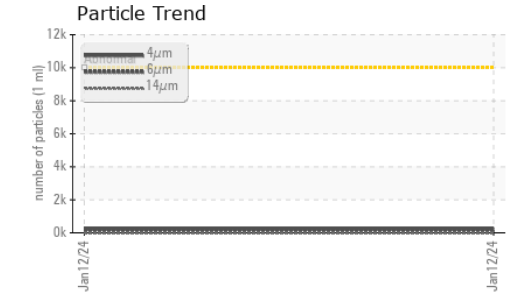
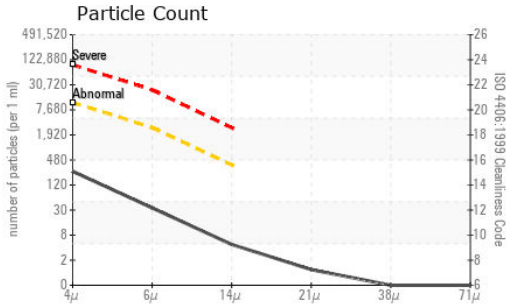
FLUID DEGRADATION		method	limit/base	current	history1	history2
Acid Number (AN)	mg KOH/g	ASTM D8045		<b>0.128</b>	---	---

Particle Filter (Magn: 200 x)








# OIL ANALYSIS REPORT



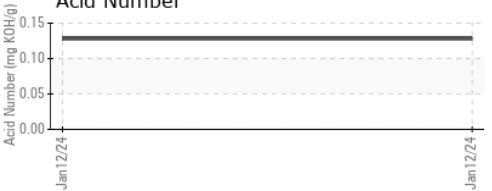
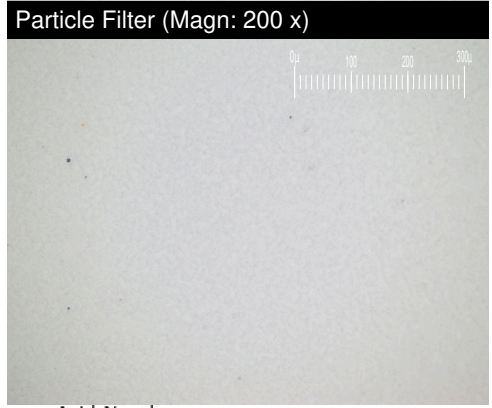
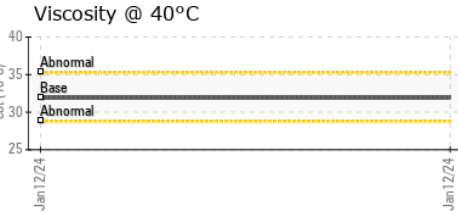
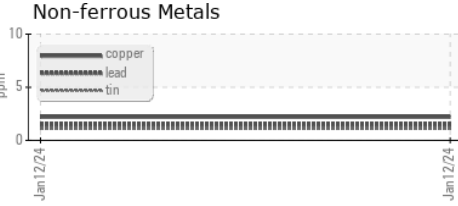
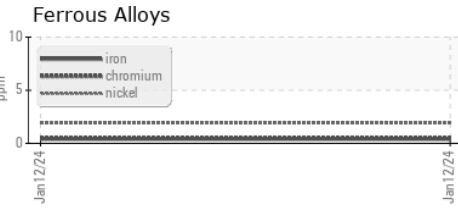
VISUAL	method	limit/base	current	history1	history2	
White Metal	scalar	*Visual	NONE	NONE	---	---
Yellow Metal	scalar	*Visual	NONE	NONE	---	---
Precipitate	scalar	*Visual	NONE	NONE	---	---
Silt	scalar	*Visual	NONE	NONE	---	---
Debris	scalar	*Visual	NONE	NONE	---	---
Sand/Dirt	scalar	*Visual	NONE	NONE	---	---
Appearance	scalar	*Visual	NORML	NORML	---	---
Odor	scalar	*Visual	NORML	NORML	---	---
Emulsified Water	scalar	*Visual	>0.05	NEG	---	---
Free Water	scalar	*Visual		NEG	---	---

FLUID PROPERTIES	method	limit/base	current	history1	history2
Visc @ 40°C	cSt	ASTM D445 32	31.9	---	---

SAMPLE IMAGES	method	limit/base	current	history1	history2
---------------	--------	------------	---------	----------	----------

Color				no image	no image
Bottom				no image	no image
PrtFilter				no image	no image

## GRAPHS



**Laboratory** : WearCheck USA - 501 Madison Ave., Cary, NC 27513  
**Sample No.** : PH0003248      **Received** : 11 Apr 2024  
**Lab Number** : 06146564      **Tested** : 16 Apr 2024  
**Unique Number** : 10976642      **Diagnosed** : 16 Apr 2024 - Jonathan Hester  
**Test Package** : PLANT ( Additional Tests: PrtFilter )

**TDS AUTOMATION**  
 1801 EAST BREMER  
 WAVERLY, IA  
 US 50677  
 Contact: DON FISHER  
 don.fisher@doerfer.com

To discuss this sample report, contact Customer Service at 1-800-237-1369.  
 \* - Denotes test methods that are outside of the ISO 17025 scope of accreditation.  
 Statements of conformity to specifications are based on the simple acceptance decision rule (JCGM 106:2012)