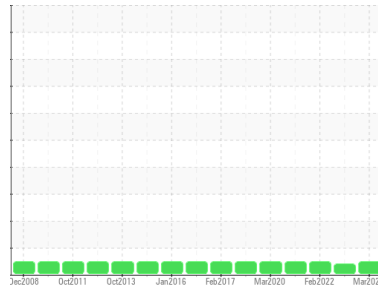




OIL ANALYSIS REPORT

Sample Rating Trend



NORMAL



Machine Id
MCQUAY OMNI HOTEL 1 (S/N STNU070300186)
 Component
Refrigeration Compressor
 Fluid
POE (13 GAL)

DIAGNOSIS

Recommendation

Resample at the next service interval to monitor.

Wear

All component wear rates are normal.

Contamination

There is no indication of any contamination in the oil.

Fluid Condition

The AN level is acceptable for this fluid. The condition of the oil is suitable for further service.

SAMPLE INFORMATION

	method	limit/base	current	history1	history2
Sample Number	Client Info		WC0812092	WC0487474	WC0430722
Sample Date	Client Info		19 Mar 2024	14 Dec 2022	03 Feb 2022
Machine Age	hrs	Client Info	13593	0	0
Oil Age	hrs	Client Info	0	0	0
Oil Changed	Client Info		N/A	N/A	N/A
Sample Status			NORMAL	ATTENTION	NORMAL

WEAR METALS

	method	limit/base	current	history1	history2
Iron	ppm	ASTM D5185m >100	0	0	4
Chromium	ppm	ASTM D5185m >2	0	0	0
Nickel	ppm	ASTM D5185m	0	0	0
Titanium	ppm	ASTM D5185m	0	0	0
Silver	ppm	ASTM D5185m >2	0	0	0
Aluminum	ppm	ASTM D5185m >50	0	0	1
Lead	ppm	ASTM D5185m >2	0	0	0
Copper	ppm	ASTM D5185m >100	17	15	1
Tin	ppm	ASTM D5185m >4	0	0	1
Antimony	ppm	ASTM D5185m	---	---	0
Vanadium	ppm	ASTM D5185m	0	0	0
Cadmium	ppm	ASTM D5185m	0	0	0

ADDITIVES

	method	limit/base	current	history1	history2
Boron	ppm	ASTM D5185m	0	0	1
Barium	ppm	ASTM D5185m	0	0	0
Molybdenum	ppm	ASTM D5185m	0	0	0
Manganese	ppm	ASTM D5185m	0	0	<1
Magnesium	ppm	ASTM D5185m	<1	0	0
Calcium	ppm	ASTM D5185m	3	0	0
Phosphorus	ppm	ASTM D5185m	1958	2195	26
Zinc	ppm	ASTM D5185m	10	9	6
Sulfur	ppm	ASTM D5185m	53	35	44

CONTAMINANTS

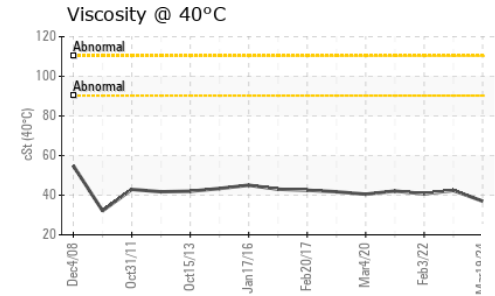
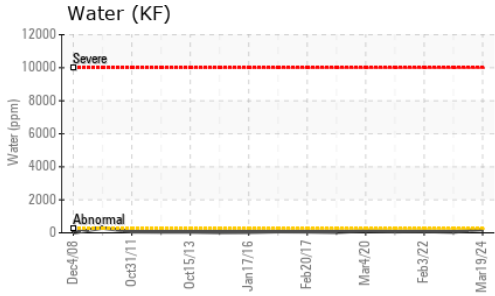
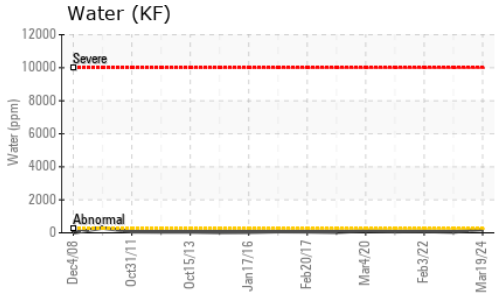
	method	limit/base	current	history1	history2
Silicon	ppm	ASTM D5185m >50	13	9	6
Sodium	ppm	ASTM D5185m	0	0	0
Potassium	ppm	ASTM D5185m >20	0	<1	0
Water	%	ASTM D6304 >0.02	0.019	0.004	0.008
ppm Water	ppm	ASTM D6304 >250	200	45.7	86.0

FLUID DEGRADATION

	method	limit/base	current	history1	history2
Acid Number (AN)	mg KOH/g	ASTM D974	0.027	0.015	0.028



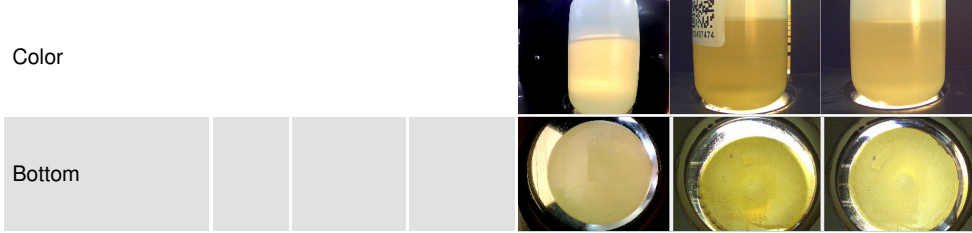
OIL ANALYSIS REPORT



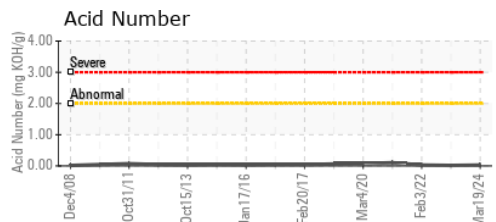
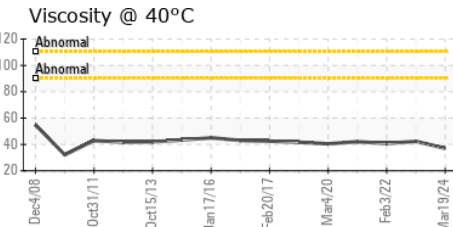
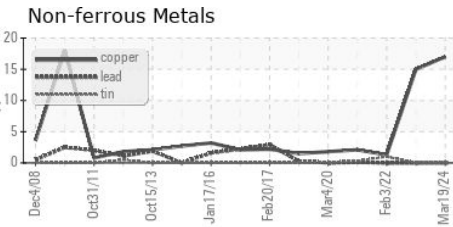
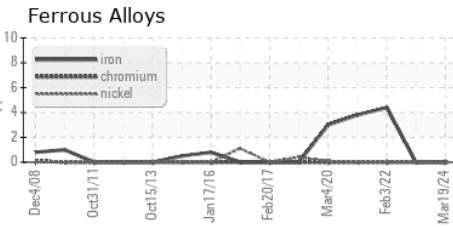
VISUAL	method	limit/base	current	history1	history2
White Metal	scalar	*Visual	NONE	NONE	NONE
Yellow Metal	scalar	*Visual	NONE	NONE	NONE
Precipitate	scalar	*Visual	NONE	NONE	NONE
Silt	scalar	*Visual	NONE	NONE	NONE
Debris	scalar	*Visual	NONE	NONE	NONE
Sand/Dirt	scalar	*Visual	NONE	NONE	NONE
Appearance	scalar	*Visual	NORML	NORML	NORML
Odor	scalar	*Visual	NORML	NORML	NORML
Emulsified Water	scalar	*Visual	>0.02	NEG	NEG
Free Water	scalar	*Visual		NEG	NEG

FLUID PROPERTIES	method	limit/base	current	history1	history2
Visc @ 40°C	cSt	ASTM D445	37.0	42.4	40.7

SAMPLE IMAGES	method	limit/base	current	history1	history2
---------------	--------	------------	---------	----------	----------



GRAPHS



Laboratory : WearCheck USA - 501 Madison Ave., Cary, NC 27513
Sample No. : WC0812092 **Received** : 12 Apr 2024
Lab Number : 06147407 **Tested** : 15 Apr 2024
Unique Number : 10977485 **Diagnosed** : 16 Apr 2024 - Don Baldrige
Test Package : IND 2

DAIKIN APPLIED-RICHMOND
 8991 OLD STAPLES MILL ROAD
 HENRICO, VA 23228
 Contact: AMANDA CARRIER
 amanda.carrier@daikinapplied.com
 T: (804)747-4822
 F: (804)747-6686

To discuss this sample report, contact Customer Service at 1-800-237-1369.

* - Denotes test methods that are outside of the ISO 17025 scope of accreditation.

Statements of conformity to specifications are based on the simple acceptance decision rule (JCGM 106:2012)