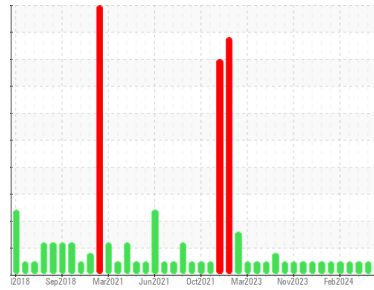




OIL ANALYSIS REPORT

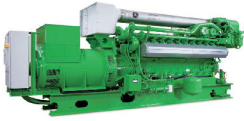
Sample Rating Trend



NORMAL



Area
EDLTAY
 Machine Id
TAYM04BE (S/N 1207234)
 Component
Biogas Engine
 Fluid
CHEVRON HDAX 9500 GAS ENGINE OIL 40 (180 GAL)



DIAGNOSIS

Recommendation

Resample at the next service interval to monitor.

Wear

All component wear rates are normal.

Contamination

There is no indication of any contamination in the oil.

Fluid Condition

The BN result indicates that there is suitable alkalinity remaining in the oil. The AN level is acceptable for this fluid. The condition of the oil is suitable for further service.

SAMPLE INFORMATION		method	limit/base	current	history1	history2
Sample Number	Client Info			WC0901637	WC0901602	WC0901595
Sample Date	Client Info			10 Apr 2024	03 Apr 2024	27 Mar 2024
Machine Age	hrs	Client Info		255116	255116	255116
Oil Age	hrs	Client Info		503	335	167
Oil Changed	Client Info			Not Chngd	Not Chngd	Not Chngd
Sample Status				NORMAL	NORMAL	NORMAL

CONTAMINATION		method	limit/base	current	history1	history2
Fuel	WC Method	>4.0		<1.0	<1.0	<1.0
Water	WC Method			NEG	NEG	NEG
Glycol	WC Method			NEG	NEG	NEG

WEAR METALS		method	limit/base	current	history1	history2
Iron	ppm	ASTM D5185m	>14	3	0	4
Chromium	ppm	ASTM D5185m	>3	<1	0	<1
Nickel	ppm	ASTM D5185m		<1	0	<1
Titanium	ppm	ASTM D5185m		<1	0	<1
Silver	ppm	ASTM D5185m		0	0	0
Aluminum	ppm	ASTM D5185m	>5	3	1	2
Lead	ppm	ASTM D5185m	>6	2	0	0
Copper	ppm	ASTM D5185m	>5	<1	0	<1
Tin	ppm	ASTM D5185m	>6	3	1	1
Vanadium	ppm	ASTM D5185m		<1	0	<1
Cadmium	ppm	ASTM D5185m		<1	0	<1

ADDITIVES		method	limit/base	current	history1	history2
Boron	ppm	ASTM D5185m		<1	0	<1
Barium	ppm	ASTM D5185m		0	0	0
Molybdenum	ppm	ASTM D5185m		4	2	3
Manganese	ppm	ASTM D5185m		<1	<1	<1
Magnesium	ppm	ASTM D5185m		8	16	7
Calcium	ppm	ASTM D5185m		1992	1771	1748
Phosphorus	ppm	ASTM D5185m		267	242	245
Zinc	ppm	ASTM D5185m		343	309	321
Sulfur	ppm	ASTM D5185m		3600	2159	1896

CONTAMINANTS		method	limit/base	current	history1	history2
Silicon	ppm	ASTM D5185m	>180	6	4	9
Sodium	ppm	ASTM D5185m		2	2	1
Potassium	ppm	ASTM D5185m	>20	4	2	4

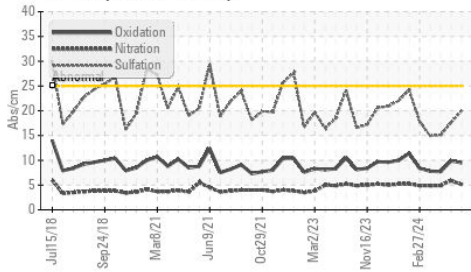
INFRA-RED		method	limit/base	current	history1	history2
Soot %	%	*ASTM D7844	>2	0	0	0
Nitration	Abs/cm	*ASTM D7624	>20	5.1	5.9	4.9
Sulfation	Abs/.1mm	*ASTM D7415	>30	20.0	17.6	15.1

FLUID DEGRADATION		method	limit/base	current	history1	history2
Oxidation	Abs/.1mm	*ASTM D7414	>15	9.5	9.9	7.7
Acid Number (AN)	mg KOH/g	ASTM D8045	1.0	1.38	1.00	0.75
Base Number (BN)	mg KOH/g	ASTM D2896	5.4	3.52	4.32	6.39

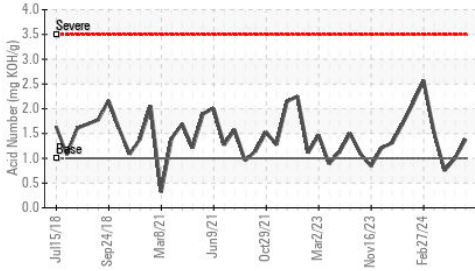


OIL ANALYSIS REPORT

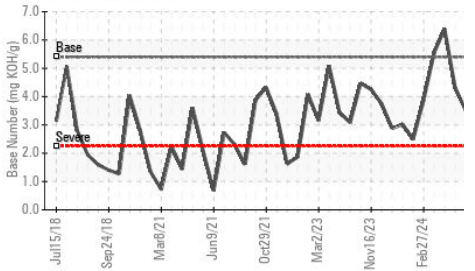
FT-IR (Direct Trend)



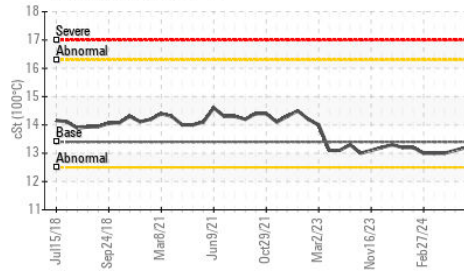
Acid Number



Base Number



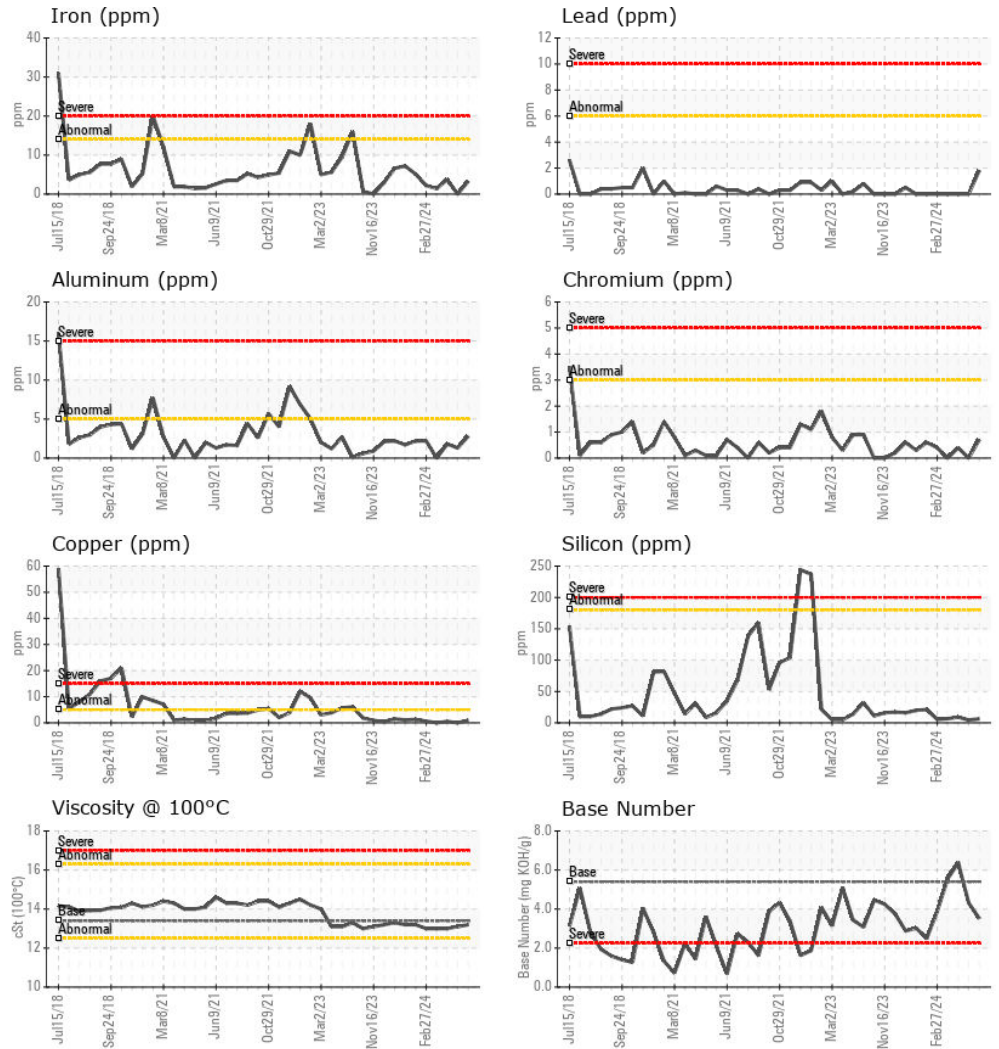
Viscosity @ 100°C



VISUAL	method	limit/base	current	history1	history2
White Metal	scalar	*Visual	NONE	NONE	NONE
Yellow Metal	scalar	*Visual	NONE	NONE	NONE
Precipitate	scalar	*Visual	NONE	NONE	NONE
Silt	scalar	*Visual	NONE	NONE	NONE
Debris	scalar	*Visual	NONE	LIGHT	NONE
Sand/Dirt	scalar	*Visual	NONE	NONE	NONE
Appearance	scalar	*Visual	NORML	NORML	NORML
Odor	scalar	*Visual	NORML	NORML	NORML
Emulsified Water	scalar	*Visual	NEG	NEG	NEG
Free Water	scalar	*Visual	NEG	NEG	NEG

FLUID PROPERTIES	method	limit/base	current	history1	history2	
Visc @ 100°C	cSt	ASTM D445	13.4	13.2	13.1	13.0

GRAPHS



Certificate L2367

Laboratory : WearCheck USA - 501 Madison Ave., Cary, NC 27513
Sample No. : WC0901637
Lab Number : 06147537
Unique Number : 10977615
Test Package : MOB 2

Received : 12 Apr 2024
Tested : 15 Apr 2024
Diagnosed : 16 Apr 2024 - Sean Felton

EDL NA Recips-Taylor County
 TAYLOR COUNTY POWER STATION, COUNTY ROAD 33 & STEWART ROAD
 MAUK, GA
 US 31058

Contact: STEVEN BABB
 steven.babb@edlenergy.com

To discuss this sample report, contact Customer Service at 1-800-237-1369.

* - Denotes test methods that are outside of the ISO 17025 scope of accreditation.

Statements of conformity to specifications are based on the simple acceptance decision rule (JCGM 106:2012)

T:
F: