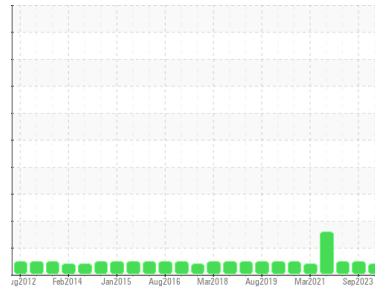




# OIL ANALYSIS REPORT

Sample Rating Trend



VIS DEBRIS



Area  
**AREA III [500319849]**  
 Machine Id  
**MARLEY U9498 (S/N CT #8)**  
 Component  
**Gearbox**  
 Fluid  
**MOBIL SHC 629 (4 GAL)**

## DIAGNOSIS

### Recommendation

We suspect abnormal contamination may be due to sampling method. No corrective action is recommended at this time. Resample at the next service interval to monitor.

### Wear

All component wear rates are normal.

### Contamination

Moderate concentration of visible dirt/debris present in the oil.

### Fluid Condition

The AN level is acceptable for this fluid. The condition of the oil is suitable for further service.

SAMPLE INFORMATION		method	limit/base	current	history1	history2
Sample Number	Client Info			<b>WC0908699</b>	WC0844035	WC0780996
Sample Date	Client Info			<b>07 Mar 2024</b>	12 Sep 2023	10 Mar 2023
Machine Age	hrs	Client Info		<b>0</b>	0	0
Oil Age	hrs	Client Info		<b>0</b>	0	0
Oil Changed	Client Info			<b>N/A</b>	N/A	N/A
Sample Status				<b>ABNORMAL</b>	NORMAL	NORMAL

CONTAMINATION		method	limit/base	current	history1	history2
Water	WC Method		>0.2	<b>NEG</b>	NEG	NEG

WEAR METALS		method	limit/base	current	history1	history2
Iron	ppm	ASTM D5185m	>200	<b>31</b>	32	28
Chromium	ppm	ASTM D5185m	>15	<b>&lt;1</b>	0	0
Nickel	ppm	ASTM D5185m	>15	<b>&lt;1</b>	0	<1
Titanium	ppm	ASTM D5185m		<b>&lt;1</b>	0	0
Silver	ppm	ASTM D5185m		<b>0</b>	0	0
Aluminum	ppm	ASTM D5185m	>25	<b>2</b>	0	<1
Lead	ppm	ASTM D5185m	>100	<b>&lt;1</b>	0	0
Copper	ppm	ASTM D5185m	>200	<b>&lt;1</b>	0	0
Tin	ppm	ASTM D5185m	>25	<b>&lt;1</b>	0	0
Vanadium	ppm	ASTM D5185m		<b>0</b>	<1	0
Cadmium	ppm	ASTM D5185m		<b>&lt;1</b>	<1	0

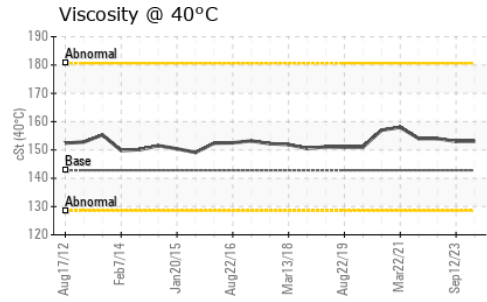
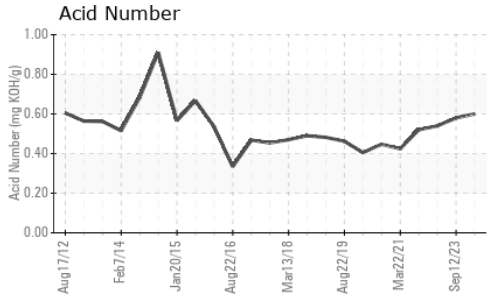
ADDITIVES		method	limit/base	current	history1	history2
Boron	ppm	ASTM D5185m		<b>0</b>	0	0
Barium	ppm	ASTM D5185m		<b>0</b>	0	0
Molybdenum	ppm	ASTM D5185m		<b>&lt;1</b>	0	0
Manganese	ppm	ASTM D5185m		<b>&lt;1</b>	<1	<1
Magnesium	ppm	ASTM D5185m		<b>&lt;1</b>	0	<1
Calcium	ppm	ASTM D5185m		<b>3</b>	0	0
Phosphorus	ppm	ASTM D5185m		<b>551</b>	501	540
Zinc	ppm	ASTM D5185m		<b>&lt;1</b>	0	2
Sulfur	ppm	ASTM D5185m		<b>0</b>	5	66

CONTAMINANTS		method	limit/base	current	history1	history2
Silicon	ppm	ASTM D5185m	>50	<b>22</b>	17	16
Sodium	ppm	ASTM D5185m		<b>0</b>	0	<1
Potassium	ppm	ASTM D5185m	>20	<b>&lt;1</b>	3	<1

FLUID DEGRADATION		method	limit/base	current	history1	history2
Acid Number (AN)	mg KOH/g	ASTM D8045		<b>0.60</b>	0.58	0.54



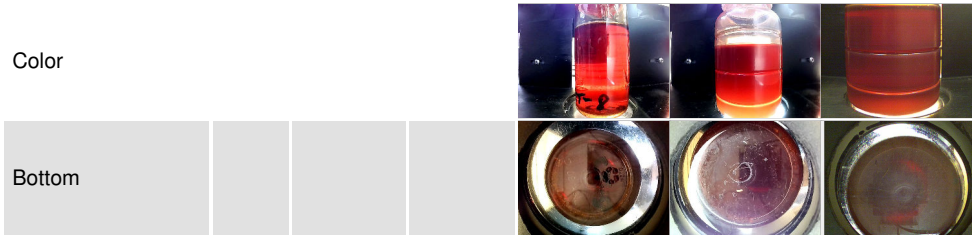
# OIL ANALYSIS REPORT



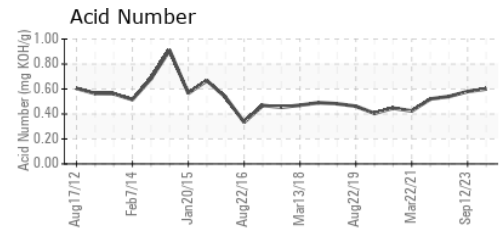
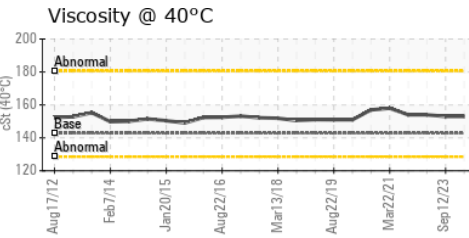
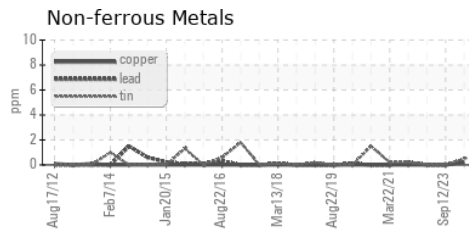
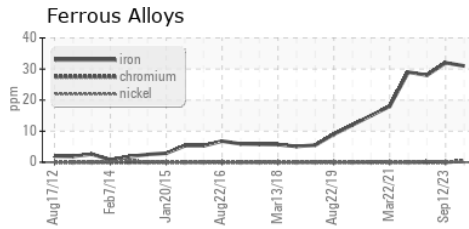
VISUAL	method	limit/base	current	history1	history2
White Metal	scalar	*Visual	NONE	NONE	NONE
Yellow Metal	scalar	*Visual	NONE	NONE	NONE
Precipitate	scalar	*Visual	NONE	NONE	NONE
Silt	scalar	*Visual	NONE	NONE	NONE
Debris	scalar	*Visual	NONE	▲ MODER	NONE
Sand/Dirt	scalar	*Visual	NONE	NONE	NONE
Appearance	scalar	*Visual	NORML	NORML	NORML
Odor	scalar	*Visual	NORML	NORML	NORML
Emulsified Water	scalar	*Visual	>0.2	NEG	0.2%
Free Water	scalar	*Visual		NEG	NEG

FLUID PROPERTIES	method	limit/base	current	history1	history2	
Visc @ 40°C	cSt	ASTM D445	142.8	<b>153</b>	153	154

SAMPLE IMAGES	method	limit/base	current	history1	history2
---------------	--------	------------	---------	----------	----------



## GRAPHS



Certificate L2367

**Laboratory** : WearCheck USA - 501 Madison Ave., Cary, NC 27513  
**Sample No.** : WC0908699      **Received** : 12 Apr 2024  
**Lab Number** : **06148114**      **Tested** : 16 Apr 2024  
**Unique Number** : 10978192      **Diagnosed** : 17 Apr 2024 - Jonathan Hester  
**Test Package** : IND 2

**SI GROUP INC - ALBEMARLE**  
 725 CANNON BRIDGE RD  
 ORANGEBURG, SC  
 US 29115

Contact: ERIC PROVEAUX  
 eric.proveaux@contractors.siigroup.com

To discuss this sample report, contact Customer Service at 1-800-237-1369.

\* - Denotes test methods that are outside of the ISO 17025 scope of accreditation.

Statements of conformity to specifications are based on the simple acceptance decision rule (JCGM 106:2012)

T: (803)539-5228

F: (803)539-5426