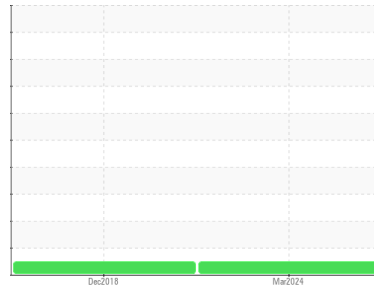




OIL ANALYSIS REPORT

Sample Rating Trend



NORMAL



Machine Id

COMPRESSOR 7 (S/N 89143)

Component

Compressor

Fluid

ROYAL PURPLE SYNFILM 100 (25 GAL)

DIAGNOSIS

Recommendation

Resample at the next service interval to monitor.

Wear

All component wear rates are normal.

Contamination

There is no indication of any contamination in the oil.

Fluid Condition

The AN level is acceptable for this fluid. The condition of the oil is suitable for further service.

SAMPLE INFORMATION

	method	limit/base	current	history1	history2
Sample Number	Client Info		RP0032253	RP149066	---
Sample Date	Client Info		24 Mar 2024	10 Dec 2018	---
Machine Age	hrs	Client Info	8500	2568	---
Oil Age	hrs	Client Info	8500	0	---
Oil Changed	Client Info		Not Chngd	N/A	---
Sample Status			NORMAL	NORMAL	---

WEAR METALS

	method	limit/base	current	history1	history2
Iron	ppm	ASTM D5185m >50	0	4	---
Chromium	ppm	ASTM D5185m >10	0	0	---
Nickel	ppm	ASTM D5185m	0	<1	---
Titanium	ppm	ASTM D5185m	0	0	---
Silver	ppm	ASTM D5185m	0	0	---
Aluminum	ppm	ASTM D5185m >25	0	<1	---
Lead	ppm	ASTM D5185m >25	0	<1	---
Copper	ppm	ASTM D5185m >50	2	6	---
Tin	ppm	ASTM D5185m >15	0	0	---
Antimony	ppm	ASTM D5185m	---	0	---
Vanadium	ppm	ASTM D5185m	0	0	---
Cadmium	ppm	ASTM D5185m	<1	0	---

ADDITIVES

	method	limit/base	current	history1	history2
Boron	ppm	ASTM D5185m	0	0	---
Barium	ppm	ASTM D5185m	0	0	---
Molybdenum	ppm	ASTM D5185m	0	0	---
Manganese	ppm	ASTM D5185m	<1	0	---
Magnesium	ppm	ASTM D5185m 90	73	22	---
Calcium	ppm	ASTM D5185m	0	1	---
Phosphorus	ppm	ASTM D5185m	17	97	---
Zinc	ppm	ASTM D5185m	0	5	---

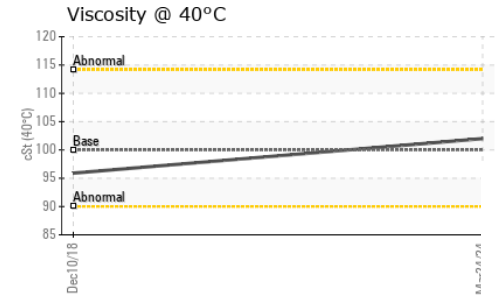
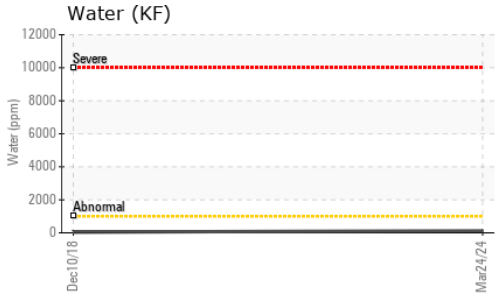
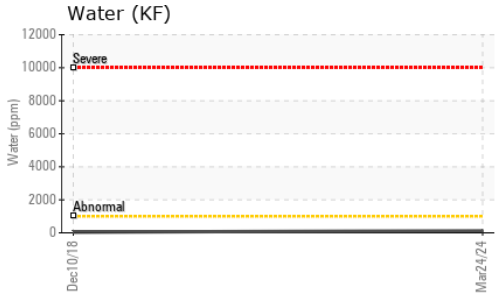
CONTAMINANTS

	method	limit/base	current	history1	history2
Silicon	ppm	ASTM D5185m >25	0	1	---
Sodium	ppm	ASTM D5185m	1	<1	---
Potassium	ppm	ASTM D5185m >20	0	0	---
Water	%	ASTM D6304 >0.1	0.013	0.004	---
ppm Water	ppm	ASTM D6304 >1000	130	40	---

FLUID DEGRADATION

	method	limit/base	current	history1	history2
Acid Number (AN)	mg KOH/g	ASTM D8045 0.25	0.37	0.538	---

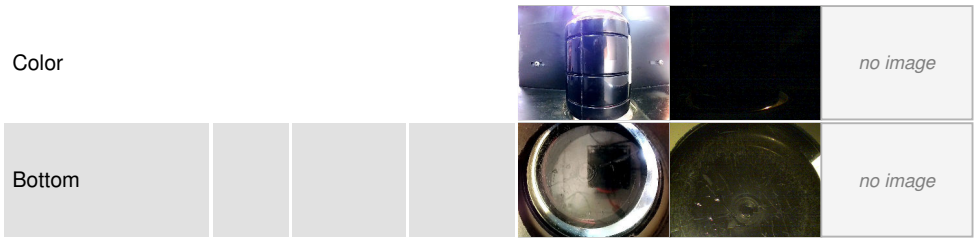
OIL ANALYSIS REPORT



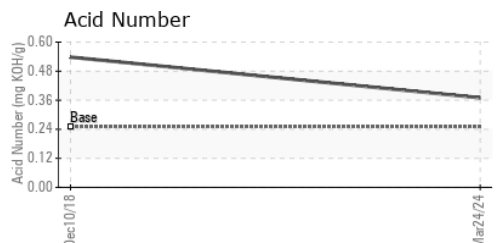
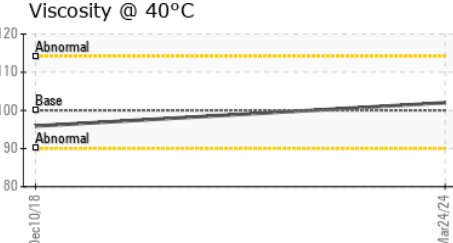
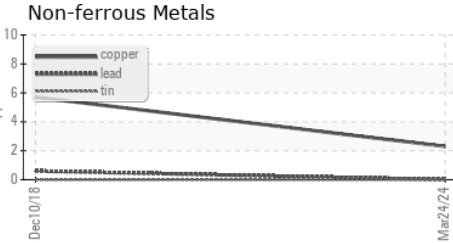
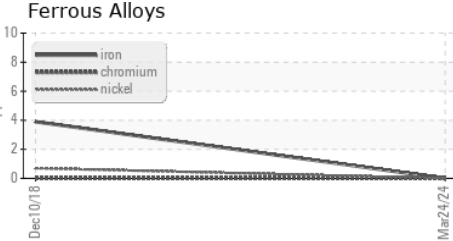
VISUAL	method	limit/base	current	history1	history2	
White Metal	scalar	*Visual	NONE	LIGHT	NONE	---
Yellow Metal	scalar	*Visual	NONE	NONE	NONE	---
Precipitate	scalar	*Visual	NONE	NONE	NONE	---
Silt	scalar	*Visual	NONE	NONE	NONE	---
Debris	scalar	*Visual	NONE	LIGHT	NONE	---
Sand/Dirt	scalar	*Visual	NONE	NONE	NONE	---
Appearance	scalar	*Visual	NORML	NORML	NORML	---
Odor	scalar	*Visual	NORML	NORML	NORML	---
Emulsified Water	scalar	*Visual	>0.1	NEG	NEG	---
Free Water	scalar	*Visual		NEG	NEG	---

FLUID PROPERTIES	method	limit/base	current	history1	history2	
Visc @ 40°C	cSt	ASTM D445	100	102	95.9	---

SAMPLE IMAGES	method	limit/base	current	history1	history2
---------------	--------	------------	---------	----------	----------



GRAPHS



Laboratory : WearCheck USA - 501 Madison Ave., Cary, NC 27513
Sample No. : RP0032253
Lab Number : **06148756**
Unique Number : 10978834
Test Package : IND 2

Received : 15 Apr 2024
Tested : 16 Apr 2024
Diagnosed : 17 Apr 2024 - Don Baldrige

PAESA
 CHAPULTEPEC 304-A COL. REGINA
 MONTERREY, NL
 Contact: MARCELA TOVAR
 marcelatovar@grupoati.com

To discuss this sample report, contact Customer Service at 1-800-237-1369.

* - Denotes test methods that are outside of the ISO 17025 scope of accreditation.

Statements of conformity to specifications are based on the simple acceptance decision rule (JCGM 106:2012)