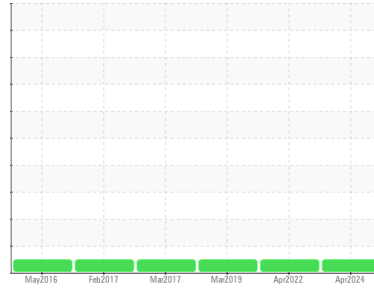




OIL ANALYSIS REPORT

Sample Rating Trend



NORMAL



Area

VAC FLUID ULTRA [416023]

Machine Id

API850063 - SILGAN CONTAINER

Component

Compressor

DIAGNOSIS

Recommendation

Resample at the next service interval to monitor.

Wear

All component wear rates are normal.

Contamination

There is no indication of any contamination in the component.

Fluid Condition

The AN level is acceptable for this fluid. The condition of the oil is suitable for further service.

SAMPLE INFORMATION

| | method | limit/base | current | history1 | history2 |
|---------------|-------------|-------------|--------------------|-------------|-------------|
| Sample Number | Client Info | | UCH06148778 | UCH05510860 | UCH04672256 |
| Sample Date | Client Info | | 14 Apr 2024 | 04 Apr 2022 | 17 Mar 2019 |
| Machine Age | hrs | Client Info | 61888 | 47066 | 23085 |
| Oil Age | hrs | Client Info | 8507 | 2227 | 3887 |
| Oil Changed | Client Info | | N/A | N/A | N/A |
| Sample Status | | | NORMAL | NORMAL | NORMAL |

CONTAMINATION

| | method | limit/base | current | history1 | history2 |
|-------|-----------|------------|------------|----------|----------|
| Water | WC Method | >0.1 | NEG | NEG | NEG |

WEAR METALS

| | method | limit/base | current | history1 | history2 | |
|----------|--------|-------------|---------|--------------|----------|---|
| Iron | ppm | ASTM D5185m | >50 | 0 | 0 | 1 |
| Chromium | ppm | ASTM D5185m | >10 | 0 | 0 | 0 |
| Nickel | ppm | ASTM D5185m | | 0 | 0 | 2 |
| Titanium | ppm | ASTM D5185m | | 0 | 0 | 0 |
| Silver | ppm | ASTM D5185m | | 0 | 0 | 0 |
| Aluminum | ppm | ASTM D5185m | >25 | 0 | 0 | 0 |
| Lead | ppm | ASTM D5185m | >25 | 0 | <1 | 0 |
| Copper | ppm | ASTM D5185m | >50 | <1 | <1 | 3 |
| Tin | ppm | ASTM D5185m | >15 | 0 | 1 | 4 |
| Antimony | ppm | ASTM D5185m | | --- | --- | 0 |
| Vanadium | ppm | ASTM D5185m | | 0 | 0 | 0 |
| Cadmium | ppm | ASTM D5185m | | <1 | 0 | 0 |

ADDITIVES

| | method | limit/base | current | history1 | history2 | |
|------------|--------|-------------|---------|--------------|----------|-----|
| Boron | ppm | ASTM D5185m | | 8 | 6 | 11 |
| Barium | ppm | ASTM D5185m | | 39 | 582 | 438 |
| Molybdenum | ppm | ASTM D5185m | | 0 | 0 | 0 |
| Manganese | ppm | ASTM D5185m | | <1 | 0 | <1 |
| Magnesium | ppm | ASTM D5185m | | 0 | 0 | <1 |
| Calcium | ppm | ASTM D5185m | | 0 | <1 | 4 |
| Phosphorus | ppm | ASTM D5185m | | 0 | 6 | 4 |
| Zinc | ppm | ASTM D5185m | | 0 | 0 | 3 |
| Sulfur | ppm | ASTM D5185m | | 422 | 398 | 412 |

CONTAMINANTS

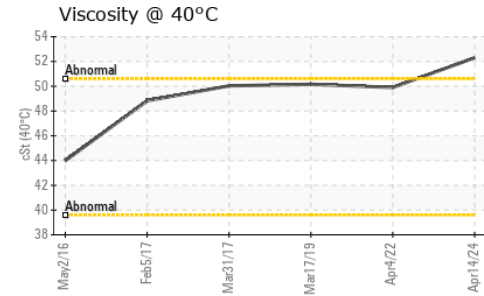
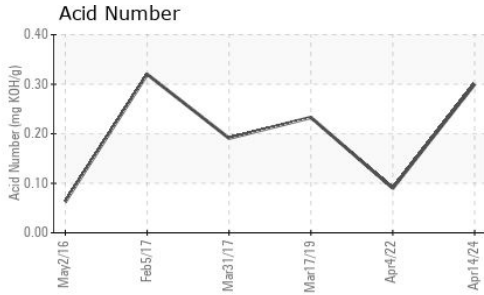
| | method | limit/base | current | history1 | history2 | |
|-----------|--------|-------------|---------|------------|----------|----|
| Silicon | ppm | ASTM D5185m | >25 | 1 | 20 | 2 |
| Sodium | ppm | ASTM D5185m | | 137 | 37 | 80 |
| Potassium | ppm | ASTM D5185m | >20 | 6 | 1 | 2 |

FLUID DEGRADATION

| | method | limit/base | current | history1 | history2 | |
|------------------|----------|------------|---------|-------------|----------|-------|
| Acid Number (AN) | mg KOH/g | ASTM D8045 | | 0.30 | 0.09 | 0.233 |



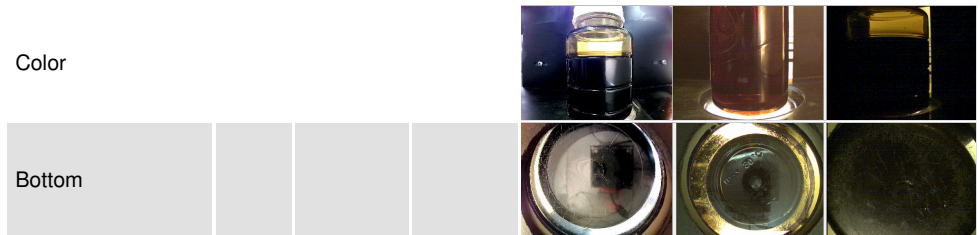
OIL ANALYSIS REPORT



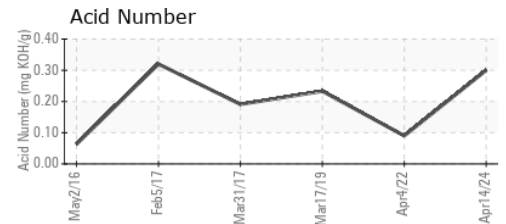
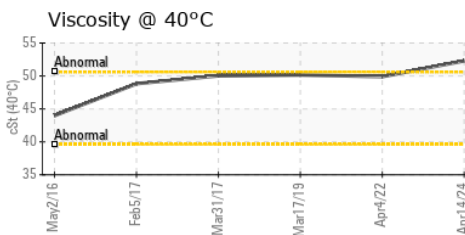
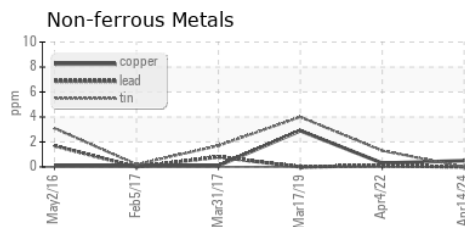
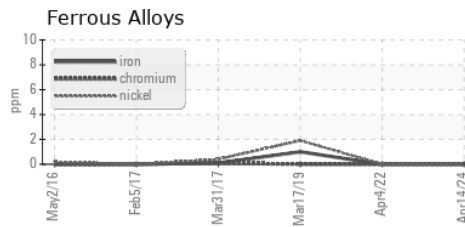
| VISUAL | method | limit/base | current | history1 | history2 |
|------------------|--------|------------|---------|----------|----------|
| White Metal | scalar | *Visual | NONE | NONE | NONE |
| Yellow Metal | scalar | *Visual | NONE | NONE | NONE |
| Precipitate | scalar | *Visual | NONE | NONE | NONE |
| Silt | scalar | *Visual | NONE | NONE | NONE |
| Debris | scalar | *Visual | NONE | LIGHT | LIGHT |
| Sand/Dirt | scalar | *Visual | NONE | NONE | NONE |
| Appearance | scalar | *Visual | NORML | NORML | NORML |
| Odor | scalar | *Visual | NORML | NORML | NORML |
| Emulsified Water | scalar | *Visual | >0.1 | NEG | NEG |
| Free Water | scalar | *Visual | | NEG | NEG |

| FLUID PROPERTIES | method | limit/base | current | history1 | history2 |
|------------------|--------|------------|---------|----------|----------|
| Visc @ 40°C | cSt | ASTM D445 | 52.3 | 49.9 | 50.16 |

| SAMPLE IMAGES | method | limit/base | current | history1 | history2 |
|---------------|--------|------------|---------|----------|----------|
|---------------|--------|------------|---------|----------|----------|



GRAPHS



Certificate L2367

Laboratory : WearCheck USA - 501 Madison Ave., Cary, NC 27513
Sample No. : UCH06148778
Lab Number : 06148778
Unique Number : 10978856
Test Package : IND 2

Received : 15 Apr 2024
Tested : 16 Apr 2024
Diagnosed : 17 Apr 2024 - Sean Felton

AIRMATIC COMPRESSOR SYSTEMS
 700 WASHINGTON AVE
 CARLSTADT, NJ
 US 07072

To discuss this sample report, contact Customer Service at 1-800-237-1369.

* - Denotes test methods that are outside of the ISO 17025 scope of accreditation.

Statements of conformity to specifications are based on the simple acceptance decision rule (JCGM 106:2012)

Contact: ELVIN DIAZ
ediaz@airmaticcompressor.com; canastasio@wearcheckusa.com

T: (800)864-7621

F: (201)342-6241