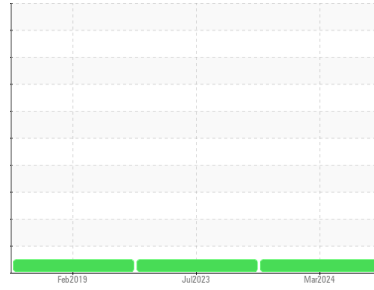




# OIL ANALYSIS REPORT

Sample Rating Trend



**NORMAL**



Area

**SULLAIR SULLUBE**

Machine Id

**SULLAIR 201208130044 - ALLIED CONCRETE BLOCK PLANT**

Component

**Compressor**

## DIAGNOSIS

### Recommendation

Resample at the next service interval to monitor.

### Wear

All component wear rates are normal.

### Contamination

There is no indication of any contamination in the oil.

### Fluid Condition

The AN level is acceptable for this fluid. The condition of the oil is suitable for further service.

## SAMPLE INFORMATION

	method	limit/base	current	history1	history2
Sample Number	Client Info		<b>UCH06148822</b>	UCH05928846	UCH04678301
Sample Date	Client Info		<b>24 Mar 2024</b>	29 Jul 2023	22 Feb 2019
Machine Age	hrs	Client Info	<b>56407</b>	52629	0
Oil Age	hrs	Client Info	<b>3808</b>	4	5492
Oil Changed	Client Info		<b>Not Changed</b>	Changed	Changed
Sample Status			<b>NORMAL</b>	NORMAL	NORMAL

## CONTAMINATION

	method	limit/base	current	history1	history2
Water	WC Method	>0.1	<b>NEG</b>	NEG	NEG

## WEAR METALS

	method	limit/base	current	history1	history2
Iron	ppm	ASTM D5185m >50	<b>0</b>	0	<1
Chromium	ppm	ASTM D5185m >10	<b>0</b>	0	0
Nickel	ppm	ASTM D5185m	<b>0</b>	0	0
Titanium	ppm	ASTM D5185m	<b>0</b>	0	0
Silver	ppm	ASTM D5185m	<b>0</b>	0	0
Aluminum	ppm	ASTM D5185m >25	<b>0</b>	<1	<1
Lead	ppm	ASTM D5185m >25	<b>0</b>	<1	0
Copper	ppm	ASTM D5185m >50	<b>2</b>	<1	1
Tin	ppm	ASTM D5185m >15	<b>&lt;1</b>	0	0
Antimony	ppm	ASTM D5185m	<b>---</b>	---	0
Vanadium	ppm	ASTM D5185m	<b>&lt;1</b>	0	0
Cadmium	ppm	ASTM D5185m	<b>0</b>	0	0

## ADDITIVES

	method	limit/base	current	history1	history2
Boron	ppm	ASTM D5185m	<b>0</b>	0	<1
Barium	ppm	ASTM D5185m 745	<b>274</b>	591	187
Molybdenum	ppm	ASTM D5185m 0.0	<b>0</b>	0	0
Manganese	ppm	ASTM D5185m	<b>0</b>	0	<1
Magnesium	ppm	ASTM D5185m 0.0	<b>0</b>	<1	0
Calcium	ppm	ASTM D5185m 1	<b>1</b>	1	2
Phosphorus	ppm	ASTM D5185m 3	<b>2</b>	2	<1
Zinc	ppm	ASTM D5185m 0.1	<b>2</b>	0	4
Sulfur	ppm	ASTM D5185m 240	<b>341</b>	333	253

## CONTAMINANTS

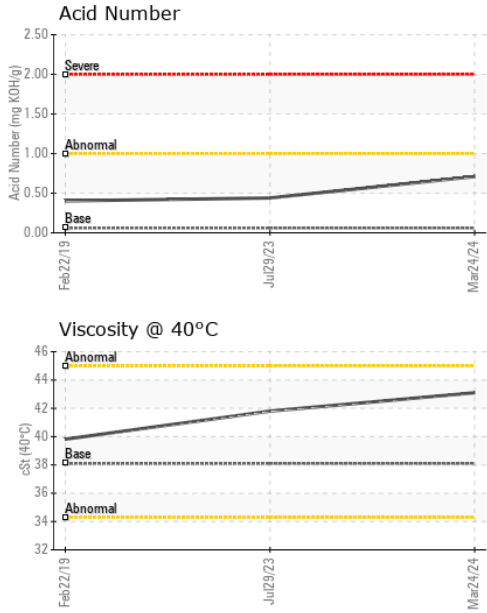
	method	limit/base	current	history1	history2
Silicon	ppm	ASTM D5185m >25	<b>&lt;1</b>	4	1
Sodium	ppm	ASTM D5185m	<b>89</b>	40	72
Potassium	ppm	ASTM D5185m >20	<b>7</b>	5	5

## FLUID DEGRADATION

	method	limit/base	current	history1	history2
Acid Number (AN)	mg KOH/g	ASTM D8045 .06	<b>0.71</b>	0.44	0.403



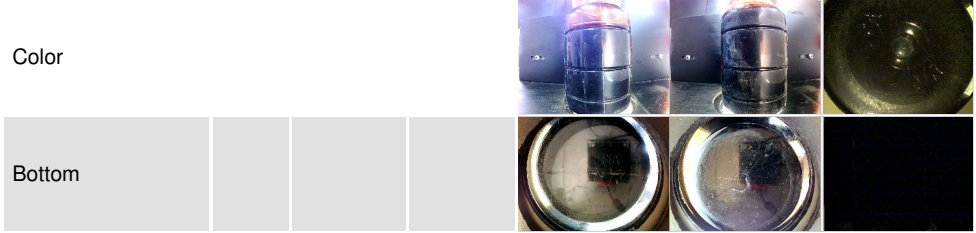
# OIL ANALYSIS REPORT



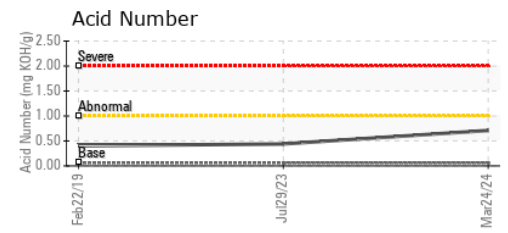
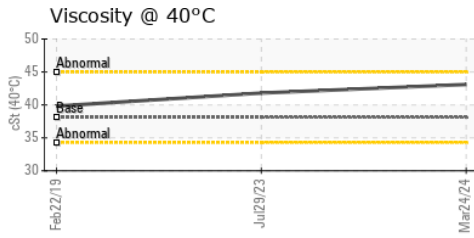
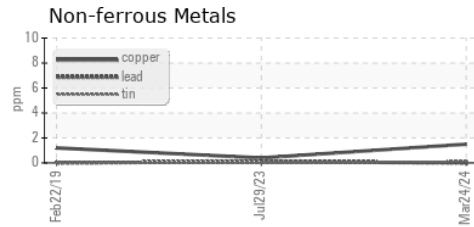
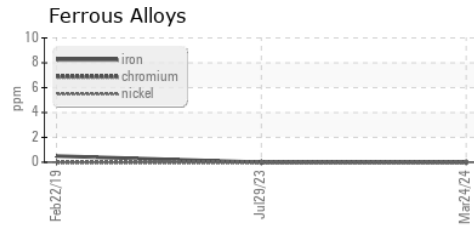
VISUAL	method	limit/base	current	history1	history2
White Metal	scalar	*Visual	NONE	NONE	NONE
Yellow Metal	scalar	*Visual	NONE	NONE	NONE
Precipitate	scalar	*Visual	NONE	NONE	NONE
Silt	scalar	*Visual	NONE	NONE	NONE
Debris	scalar	*Visual	NONE	NONE	NONE
Sand/Dirt	scalar	*Visual	NONE	NONE	NONE
Appearance	scalar	*Visual	NORML	NORML	NORML
Odor	scalar	*Visual	NORML	NORML	NORML
Emulsified Water	scalar	*Visual	>0.1	NEG	NEG
Free Water	scalar	*Visual		NEG	NEG

FLUID PROPERTIES	method	limit/base	current	history1	history2	
Visc @ 40°C	cSt	ASTM D445	38.1	<b>43.1</b>	41.8	39.82

SAMPLE IMAGES	method	limit/base	current	history1	history2
---------------	--------	------------	---------	----------	----------



## GRAPHS



**Laboratory** : WearCheck USA - 501 Madison Ave., Cary, NC 27513  
**Sample No.** : UCH06148822      **Received** : 15 Apr 2024  
**Lab Number** : **06148822**      **Tested** : 16 Apr 2024  
**Unique Number** : 10978900      **Diagnosed** : 17 Apr 2024 - Sean Felton  
**Test Package** : IND 2

**TATE ENGINEERING**  
 8131 VIRGINIA PINE CT  
 RICHMOND, VA  
 US 23237  
 Contact: RANDY BEAUCHAMP  
 randy.beauchamp@tate.com  
 T: (757)214-6541  
 F: (804)743-0415

To discuss this sample report, contact Customer Service at 1-800-237-1369.  
 \* - Denotes test methods that are outside of the ISO 17025 scope of accreditation.  
 Statements of conformity to specifications are based on the simple acceptance decision rule (JCGM 106:2012)