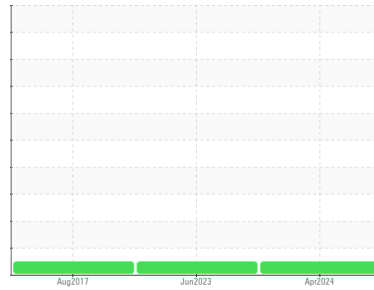




FUEL REPORT

Sample Rating Trend



NORMAL



Area

[W149895]

Machine Id

GENERAC 9279720 - TABERNACLE

Component

Diesel Fuel

Fluid

No.2 DIESEL FUEL (ULTRALOW SULPHUR) (400 GAL)

DIAGNOSIS

Recommendation

All laboratory tests indicate that this sample meets specifications for No.2 ultra-low-sulfur diesel fuel.

Corrosion

All metal levels are normal indicating no corrosion in the system.

Contaminants

There is no bacteria or fungus (yeast and/or mold) indicated in the sample. The water content is negligible. There is no indication of any contamination in the fuel.

Fuel Condition

Sulfur value derived by ASTM D5453 method for ULSD validation. Sulfur level is acceptable for ULSD specification.

SAMPLE INFORMATION		method	limit/base	current	history1	history2
Sample Number	Client Info			WC0911326	WCDF01793	WCDF00048
Sample Date	Client Info			01 Apr 2024	02 Jun 2023	29 Aug 2017
Machine Age	hrs	Client Info		0	0	0
Sample Status				NORMAL	NORMAL	NORMAL

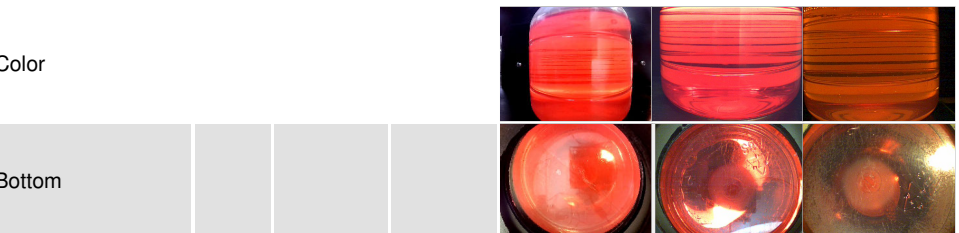
PHYSICAL PROPERTIES		method	limit/base	current	history1	history2
ASTM Color	scalar	*ASTM D1500		L4.0	L4.0	L2.5
Visc @ 40°C	cSt	ASTM D445	3.0	2.53	2.5	3.54

SULFUR CONTENT		method	limit/base	current	history1	history2
Sulfur	ppm	ASTM D5185m	10	0	3	7
Sulfur (UVF)	ppm	ASTM D5453		16	14	10

CONTAMINANTS		method	limit/base	current	history1	history2
Silicon	ppm	ASTM D5185m	<1.0	0	<1	0
Sodium	ppm	ASTM D5185m	<0.1	<1	<1	0
Potassium	ppm	ASTM D5185m	<0.1	0	0	0
Water	%	ASTM D6304	<0.05	0.003	0.007	0.039
ppm Water	ppm	ASTM D6304	<500	34	78.3	390
% Gasoline	%	*In-House	<0.50	0.0	0.0	0.0
% Biodiesel	%	*In-House	<20.0	0.0	0.0	0.3

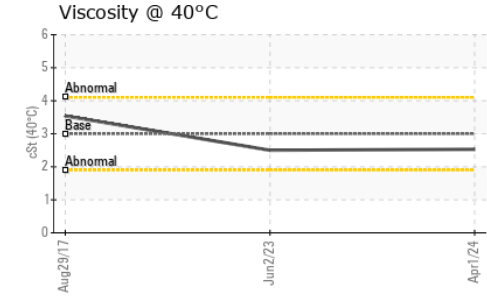
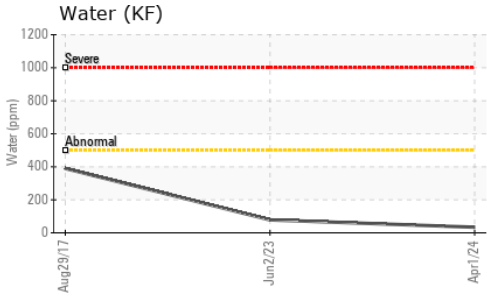
HEAVY METALS		method	limit/base	current	history1	history2
Aluminum	ppm	ASTM D5185m	<0.1	0	<1	<1
Nickel	ppm	ASTM D5185m	<0.1	0	0	<1
Lead	ppm	ASTM D5185m	<0.1	0	0	0
Vanadium	ppm	ASTM D5185m	<0.1	0	<1	<1
Iron	ppm	ASTM D5185m	<0.1	0	0	0
Calcium	ppm	ASTM D5185m	<0.1	2	0	0
Magnesium	ppm	ASTM D5185m	<0.1	0	1	0
Phosphorus	ppm	ASTM D5185m	<0.1	0	1	0
Zinc	ppm	ASTM D5185m	<0.1	0	0	<1

SAMPLE IMAGES		method	limit/base	current	history1	history2
---------------	--	--------	------------	---------	----------	----------

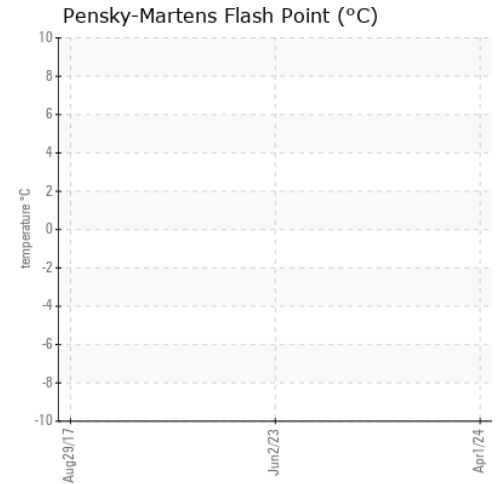




FUEL REPORT



GRAPHS



Certificate L2367

Laboratory : WearCheck USA - 501 Madison Ave., Cary, NC 27513
Sample No. : WC0911326 **Received** : 15 Apr 2024
Lab Number : 06149235 **Tested** : 26 Apr 2024
Unique Number : 10979313 **Diagnosed** : 26 Apr 2024 - Angela Borella
Test Package : DF-5 (Additional Tests: PritCount, Screen)

To discuss this sample report, contact Customer Service at 1-800-237-1369.

* - Denotes test methods that are outside of the ISO 17025 scope of accreditation.

Statements of conformity to specifications are based on the simple acceptance decision rule (JCGM 106:2012)

NATIONAL POWER CORP
 4541 PRESLYN DR
 RALEIGH, NC
 US 27616

Contact: BRANDON RICE
 brandon.rice@natpow.com

T:
 F: (919)790-9714