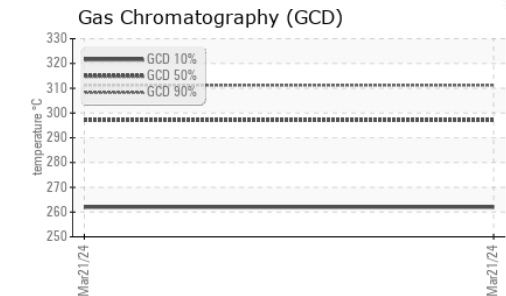
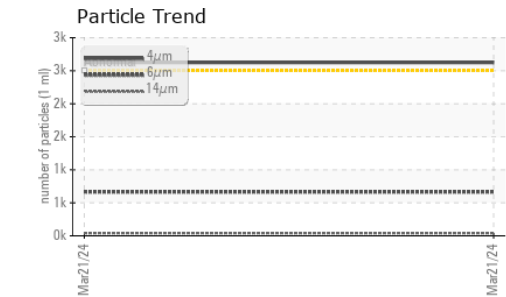
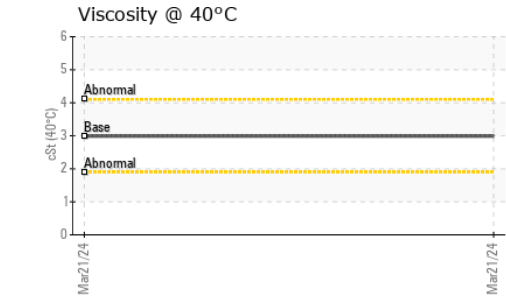
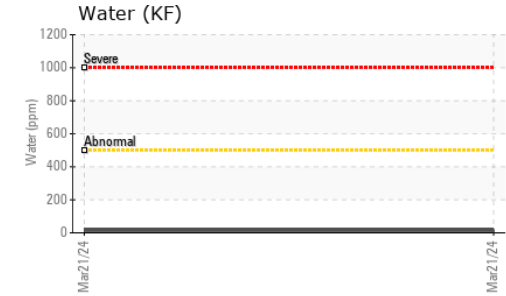
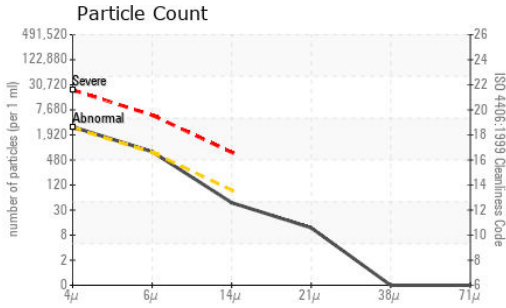




FUEL REPORT

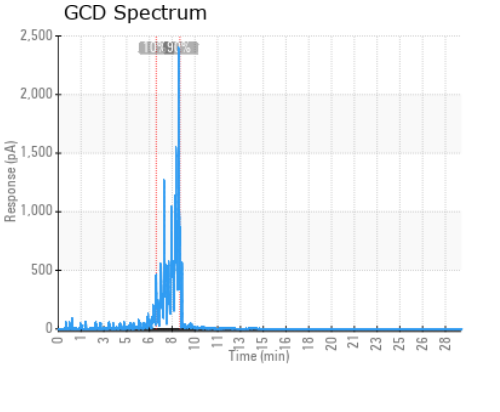
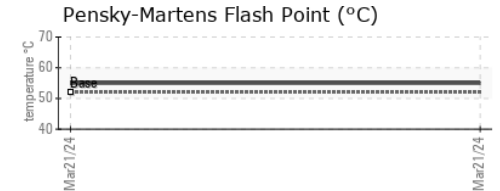
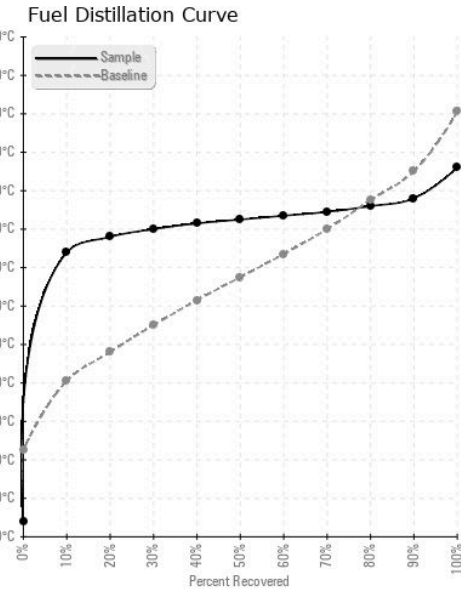


FLUID CLEANLINESS	method	limit/base	current	history1	history2
Particles >4µm	ASTM D7647	>2500	2624	---	---
Particles >6µm	ASTM D7647	>640	666	---	---
Particles >14µm	ASTM D7647	>80	40	---	---
Particles >21µm	ASTM D7647	>20	10	---	---
Particles >38µm	ASTM D7647	>4	0	---	---
Particles >71µm	ASTM D7647	>3	0	---	---
Oil Cleanliness	ISO 4406 (c)	>18/16/13	19/17/12	---	---

HEAVY METALS	method	limit/base	current	history1	history2
Aluminum	ppm	ASTM D5185m <0.1	0	---	---
Nickel	ppm	ASTM D5185m <0.1	0	---	---
Lead	ppm	ASTM D5185m <0.1	0	---	---
Vanadium	ppm	ASTM D5185m <0.1	0	---	---
Iron	ppm	ASTM D5185m <0.1	0	---	---
Calcium	ppm	ASTM D5185m <0.1	1	---	---
Magnesium	ppm	ASTM D5185m <0.1	0	---	---
Phosphorus	ppm	ASTM D5185m <0.1	0	---	---
Zinc	ppm	ASTM D5185m <0.1	0	---	---

SAMPLE IMAGES	method	limit/base	current	history1	history2
Color				no image	no image
Bottom				no image	no image

GRAPHS



Laboratory : WearCheck USA - 501 Madison Ave., Cary, NC 27513
Sample No. : RY0123484 **Received** : 15 Apr 2024
Lab Number : **06149238** **Tested** : 23 Apr 2024
Unique Number : 10979316 **Diagnosed** : 23 Apr 2024 - Doug Bogart
Test Package : DF-3 (Additional Tests: Fuel, Screen)

Ryder Transportation Services
 3494 OLYMPIC ST
 SPRINGFIELD, OR
 US 97478
 Contact: TIM HOLLENBECK
 Tim_Hollenbeck@ryder.com
 T: (815)235-7128
 F:

To discuss this sample report, contact Customer Service at 1-800-237-1369.

* - Denotes test methods that are outside of the ISO 17025 scope of accreditation.

Statements of conformity to specifications are based on the simple acceptance decision rule (JCGM 106:2012)