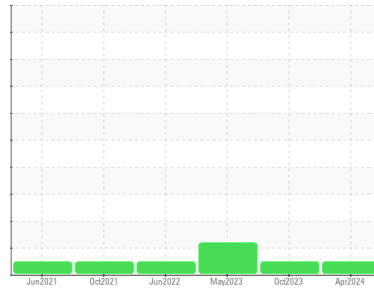




# OIL ANALYSIS REPORT

Sample Rating Trend



**NORMAL**



Machine Id  
**KAESER 5733709**  
 Component  
**Compressor**  
 Fluid  
**KAESER SIGMA (OEM) M-460 (--- GAL)**

**DIAGNOSIS**

**Recommendation**  
 Oil and filter change at the time of sampling has been noted. Resample at the next service interval to monitor.

**Wear**  
 All component wear rates are normal.

**Contamination**  
 There is no indication of any contamination in the oil. The amount and size of particulates present in the system are acceptable.

**Fluid Condition**  
 The AN level is acceptable for this fluid. The condition of the oil is suitable for further service.

SAMPLE INFORMATION		method	limit/base	current	history1	history2
Sample Number	Client Info			<b>KCPA013569</b>	KCPA007830	KCP53225
Sample Date	Client Info			<b>10 Apr 2024</b>	04 Oct 2023	01 May 2023
Machine Age	hrs	Client Info		<b>24808</b>	22772	0
Oil Age	hrs	Client Info		<b>0</b>	0	0
Oil Changed	Client Info			<b>Changed</b>	N/A	Changed
Sample Status				<b>NORMAL</b>	NORMAL	ATTENTION

WEAR METALS		method	limit/base	current	history1	history2
Iron	ppm	ASTM D5185m	>50	<b>&lt;1</b>	<1	<1
Chromium	ppm	ASTM D5185m	>10	<b>0</b>	0	<1
Nickel	ppm	ASTM D5185m	>3	<b>&lt;1</b>	0	<1
Titanium	ppm	ASTM D5185m	>3	<b>0</b>	0	0
Silver	ppm	ASTM D5185m	>2	<b>0</b>	0	0
Aluminum	ppm	ASTM D5185m	>10	<b>&lt;1</b>	<1	1
Lead	ppm	ASTM D5185m	>10	<b>0</b>	0	1
Copper	ppm	ASTM D5185m	>50	<b>5</b>	2	1
Tin	ppm	ASTM D5185m	>10	<b>&lt;1</b>	0	<1
Vanadium	ppm	ASTM D5185m		<b>0</b>	0	0
Cadmium	ppm	ASTM D5185m		<b>0</b>	0	0

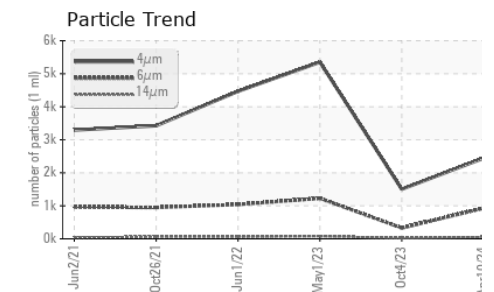
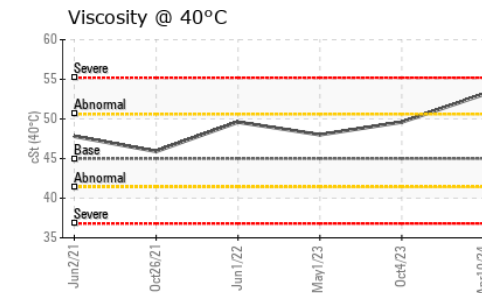
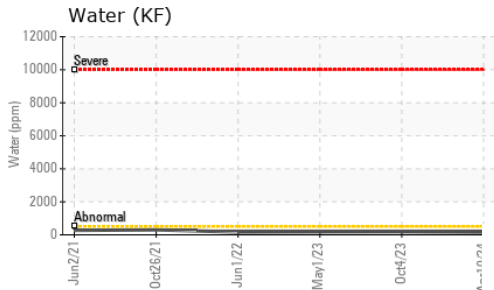
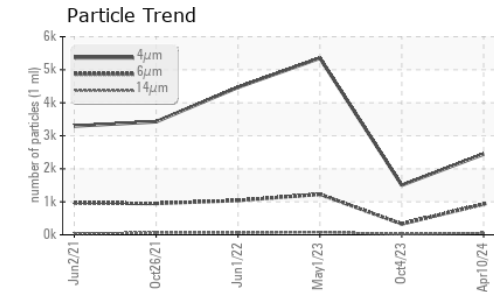
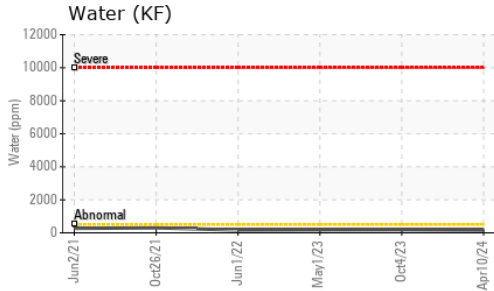
ADDITIVES		method	limit/base	current	history1	history2
Boron	ppm	ASTM D5185m	0	<b>0</b>	0	0
Barium	ppm	ASTM D5185m	90	<b>42</b>	51	59
Molybdenum	ppm	ASTM D5185m	0	<b>0</b>	0	0
Manganese	ppm	ASTM D5185m		<b>1</b>	0	<1
Magnesium	ppm	ASTM D5185m	100	<b>54</b>	67	88
Calcium	ppm	ASTM D5185m	0	<b>3</b>	0	2
Phosphorus	ppm	ASTM D5185m	0	<b>0</b>	3	0
Zinc	ppm	ASTM D5185m	0	<b>0</b>	2	0
Sulfur	ppm	ASTM D5185m	23500	<b>24910</b>	19681	22929

CONTAMINANTS		method	limit/base	current	history1	history2
Silicon	ppm	ASTM D5185m	>25	<b>&lt;1</b>	<1	3
Sodium	ppm	ASTM D5185m		<b>20</b>	19	12
Potassium	ppm	ASTM D5185m	>20	<b>16</b>	17	11
Water	%	ASTM D6304	>0.05	<b>0.015</b>	0.018	0.018
ppm Water	ppm	ASTM D6304	>500	<b>153</b>	187.9	181.5

FLUID CLEANLINESS		method	limit/base	current	history1	history2
Particles >4µm		ASTM D7647		<b>2443</b>	1503	5351
Particles >6µm		ASTM D7647	>1300	<b>931</b>	329	1227
Particles >14µm		ASTM D7647	>80	<b>55</b>	18	81
Particles >21µm		ASTM D7647	>20	<b>12</b>	4	21
Particles >38µm		ASTM D7647	>4	<b>1</b>	0	0
Particles >71µm		ASTM D7647	>3	<b>0</b>	0	0
Oil Cleanliness		ISO 4406 (c)	>--/17/13	<b>18/17/13</b>	18/16/11	20/17/14

FLUID DEGRADATION		method	limit/base	current	history1	history2
Acid Number (AN)	mg KOH/g	ASTM D8045	1.0	<b>0.37</b>	0.39	0.35

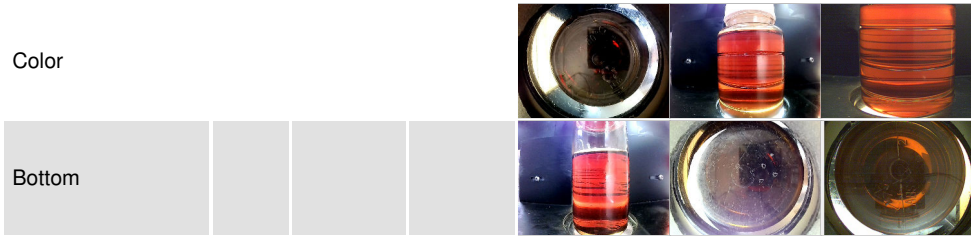
# OIL ANALYSIS REPORT



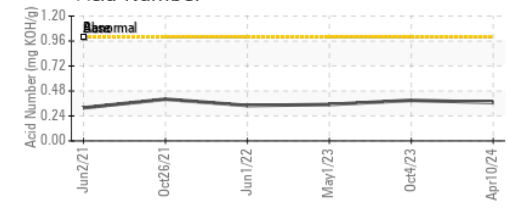
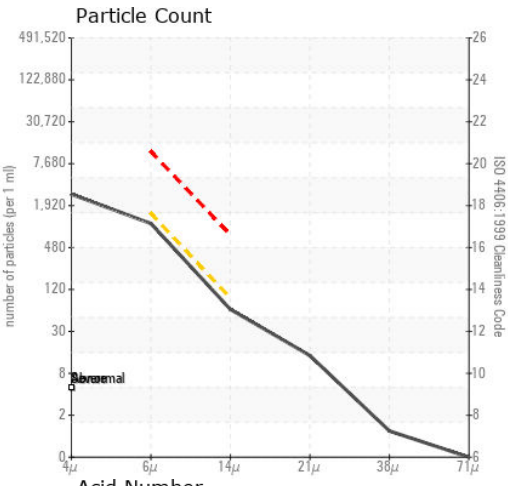
VISUAL	method	limit/base	current	history1	history2
White Metal	scalar	*Visual	NONE	NONE	NONE
Yellow Metal	scalar	*Visual	NONE	NONE	NONE
Precipitate	scalar	*Visual	NONE	NONE	NONE
Silt	scalar	*Visual	NONE	NONE	NONE
Debris	scalar	*Visual	NONE	NONE	NONE
Sand/Dirt	scalar	*Visual	NONE	NONE	NONE
Appearance	scalar	*Visual	NORML	NORML	NORML
Odor	scalar	*Visual	NORML	NORML	NORML
Emulsified Water	scalar	*Visual	>0.05	NEG	NEG
Free Water	scalar	*Visual		NEG	NEG

FLUID PROPERTIES	method	limit/base	current	history1	history2	
Visc @ 40°C	cSt	ASTM D445	45	53.1	49.6	48.0

SAMPLE IMAGES	method	limit/base	current	history1	history2
---------------	--------	------------	---------	----------	----------



## GRAPHS



**Laboratory** : WearCheck USA - 501 Madison Ave., Cary, NC 27513  
**Sample No.** : KCPA013569  
**Lab Number** : 06151198  
**Unique Number** : 10981276  
**Test Package** : IND 2 ( Additional Tests: KF, PrtCount )  
**Received** : 16 Apr 2024  
**Tested** : 19 Apr 2024  
**Diagnosed** : 19 Apr 2024 - Don Baldrige

**AMAZON**  
 188 MOUNTAIN HOUSE PKWY  
 TRACY, CA  
 US 95377  
 Contact: Service Manager

To discuss this sample report, contact Customer Service at 1-800-237-1369.

\* - Denotes test methods that are outside of the ISO 17025 scope of accreditation.  
 Statements of conformity to specifications are based on the simple acceptance decision rule (JCGM 106:2012)