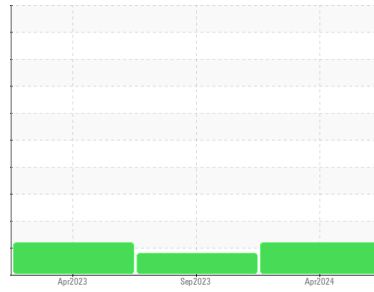




# OIL ANALYSIS REPORT

Sample Rating Trend



DEGRADATION



Area

[2402190138/1]

Machine Id

TRANE Y & S CANDY CHILLER 6 (S/N L95K09769)

Component

Refrigeration Compressor

Fluid

TRANE 0022 (8 GAL)

## DIAGNOSIS

### Recommendation

Oil and filter change at the time of sampling has been noted. We recommend an early resample to monitor this condition.

### Wear

All component wear rates are normal.

### Contamination

There is no indication of any contamination in the oil.

### Fluid Condition

The AN level is at the top-end of the recommended limit.

## SAMPLE INFORMATION

	method	limit/base	current	history1	history2
Sample Number	Client Info		WC0798538	WC0664534	WC0664529
Sample Date	Client Info		09 Apr 2024	22 Sep 2023	28 Apr 2023
Machine Age	hrs	Client Info	10704	0	8358
Oil Age	hrs	Client Info	0	3	0
Oil Changed	Client Info		Changed	Changed	N/A
Sample Status			ABNORMAL	ATTENTION	ABNORMAL

## WEAR METALS

	method	limit/base	current	history1	history2
Iron	ppm	ASTM D5185m >8	0	1	3
Chromium	ppm	ASTM D5185m >2	0	0	0
Nickel	ppm	ASTM D5185m	0	0	0
Titanium	ppm	ASTM D5185m	0	0	0
Silver	ppm	ASTM D5185m >2	0	0	0
Aluminum	ppm	ASTM D5185m >3	0	1	0
Lead	ppm	ASTM D5185m >2	0	<1	0
Copper	ppm	ASTM D5185m >8	1	3	<1
Tin	ppm	ASTM D5185m >4	0	<1	<1
Vanadium	ppm	ASTM D5185m	<1	0	0
Cadmium	ppm	ASTM D5185m	0	0	0

## ADDITIVES

	method	limit/base	current	history1	history2
Boron	ppm	ASTM D5185m	0	0	0
Barium	ppm	ASTM D5185m	0	0	0
Molybdenum	ppm	ASTM D5185m	0	0	0
Manganese	ppm	ASTM D5185m	0	0	0
Magnesium	ppm	ASTM D5185m	0	<1	0
Calcium	ppm	ASTM D5185m	0	1	0
Phosphorus	ppm	ASTM D5185m	15	2	<1
Zinc	ppm	ASTM D5185m	0	0	0
Sulfur	ppm	ASTM D5185m	0	1	334

## CONTAMINANTS

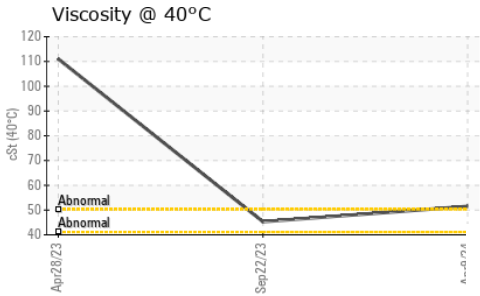
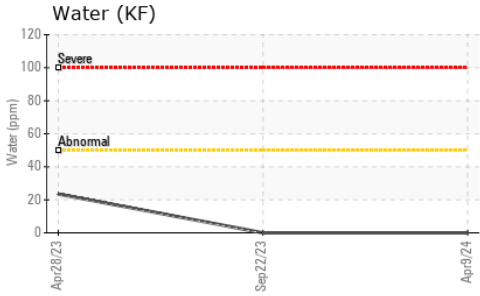
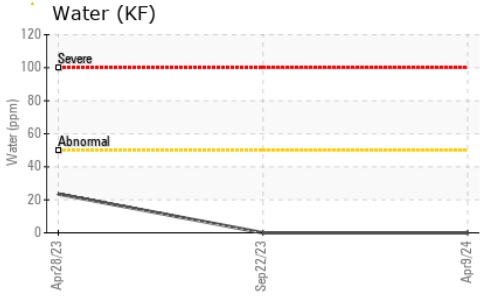
	method	limit/base	current	history1	history2
Silicon	ppm	ASTM D5185m >15	3	4	0
Sodium	ppm	ASTM D5185m	<1	0	0
Potassium	ppm	ASTM D5185m >20	0	<1	<1
Water	%	ASTM D6304 >0.005	0.00	0.00	0.002
ppm Water	ppm	ASTM D6304 >50	0	0.00	23.5

## FLUID DEGRADATION

	method	limit/base	current	history1	history2
Acid Number (AN)	mg KOH/g	ASTM D974	▲ 0.121	0.089	▲ 0.577



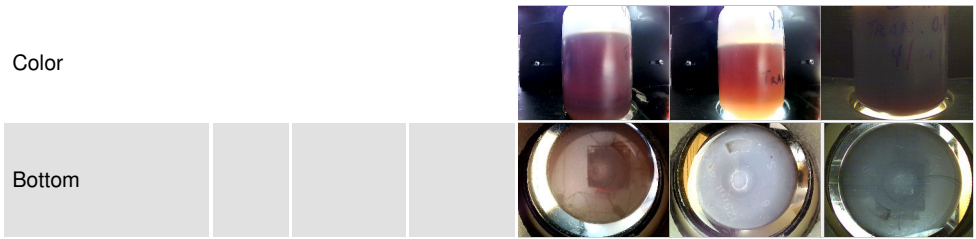
# OIL ANALYSIS REPORT



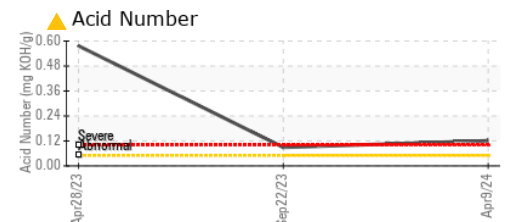
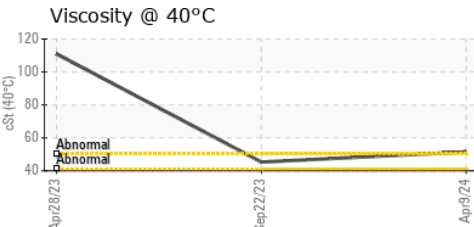
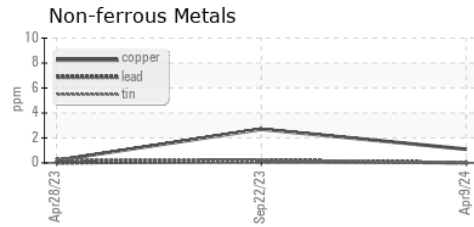
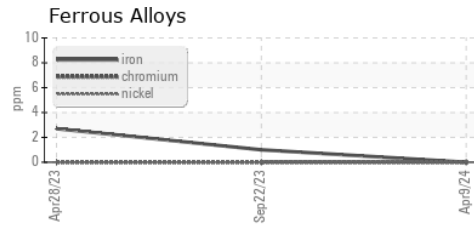
VISUAL	method	limit/base	current	history1	history2
White Metal	scalar	*Visual	NONE	NONE	NONE
Yellow Metal	scalar	*Visual	NONE	NONE	NONE
Precipitate	scalar	*Visual	NONE	NONE	NONE
Silt	scalar	*Visual	NONE	NONE	NONE
Debris	scalar	*Visual	NONE	NONE	NONE
Sand/Dirt	scalar	*Visual	NONE	NONE	NONE
Appearance	scalar	*Visual	NORML	NORML	NORML
Odor	scalar	*Visual	NORML	NORML	NORML
Emulsified Water	scalar	*Visual	>0.005	NEG	NEG
Free Water	scalar	*Visual		NEG	NEG

FLUID PROPERTIES	method	limit/base	current	history1	history2
Visc @ 40°C	cSt	ASTM D445	51.5	45.3	111

SAMPLE IMAGES	method	limit/base	current	history1	history2
---------------	--------	------------	---------	----------	----------



## GRAPHS



**Laboratory** : WearCheck USA - 501 Madison Ave., Cary, NC 27513  
**Sample No.** : WC0798538      **Received** : 17 Apr 2024  
**Lab Number** : 06152042      **Tested** : 18 Apr 2024  
**Unique Number** : 10982120      **Diagnosed** : 22 Apr 2024 - Jonathan Hester  
**Test Package** : IND 2

**DAIKIN APPLIED**  
 5021 HOWERTON WAY SUITE P  
 BOWIE, MD  
 US 20715  
 Contact: ANDREW TURLINGTON  
 andrew.turlington@daikinapplied.com

To discuss this sample report, contact Customer Service at 1-800-237-1369.  
 \* - Denotes test methods that are outside of the ISO 17025 scope of accreditation.  
 Statements of conformity to specifications are based on the simple acceptance decision rule (JCGM 106:2012)