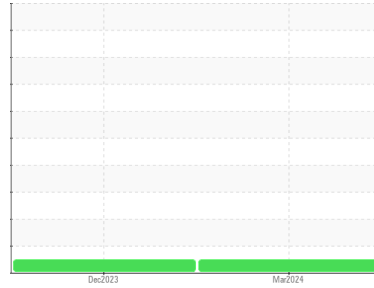




# OIL ANALYSIS REPORT

Sample Rating Trend



**NORMAL**



Area

**NOT GIVEN**

Machine Id

**ATLAS COPCP UTY203685 - PRIME PROCESS**

Component

**Compressor**

## DIAGNOSIS

### Recommendation

Resample at the next service interval to monitor.

### Wear

All component wear rates are normal.

### Contamination

There is no indication of any contamination in the oil.

### Fluid Condition

The AN level is acceptable for this fluid. The condition of the oil is suitable for further service.

## SAMPLE INFORMATION

	method	limit/base	current	history1	history2
Sample Number	Client Info		<b>UCH06152077</b>	UCH06044998	---
Sample Date	Client Info		<b>27 Mar 2024</b>	19 Dec 2023	---
Machine Age	hrs	Client Info	<b>15150</b>	13618	---
Oil Age	hrs	Client Info	<b>0</b>	13618	---
Oil Changed	Client Info		<b>Not Changed</b>	Not Changed	---
Sample Status			<b>NORMAL</b>	NORMAL	---

## CONTAMINATION

	method	limit/base	current	history1	history2
Water	WC Method	>0.1	<b>NEG</b>	NEG	---

## WEAR METALS

	method	limit/base	current	history1	history2
Iron	ppm	ASTM D5185m >50	<b>0</b>	0	---
Chromium	ppm	ASTM D5185m >10	<b>&lt;1</b>	0	---
Nickel	ppm	ASTM D5185m	<b>0</b>	0	---
Titanium	ppm	ASTM D5185m	<b>0</b>	0	---
Silver	ppm	ASTM D5185m	<b>0</b>	0	---
Aluminum	ppm	ASTM D5185m >25	<b>0</b>	0	---
Lead	ppm	ASTM D5185m >25	<b>0</b>	0	---
Copper	ppm	ASTM D5185m >50	<b>0</b>	0	---
Tin	ppm	ASTM D5185m >15	<b>&lt;1</b>	0	---
Vanadium	ppm	ASTM D5185m	<b>0</b>	0	---
Cadmium	ppm	ASTM D5185m	<b>0</b>	0	---

## ADDITIVES

	method	limit/base	current	history1	history2
Boron	ppm	ASTM D5185m	<b>0</b>	0	---
Barium	ppm	ASTM D5185m	<b>2</b>	2	---
Molybdenum	ppm	ASTM D5185m	<b>0</b>	0	---
Manganese	ppm	ASTM D5185m	<b>0</b>	0	---
Magnesium	ppm	ASTM D5185m	<b>0</b>	0	---
Calcium	ppm	ASTM D5185m	<b>1</b>	0	---
Phosphorus	ppm	ASTM D5185m	<b>0</b>	0	---
Zinc	ppm	ASTM D5185m	<b>0</b>	0	---
Sulfur	ppm	ASTM D5185m	<b>0</b>	0	---

## CONTAMINANTS

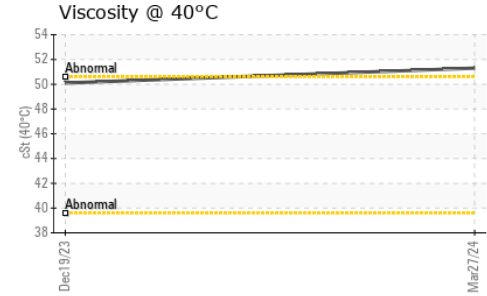
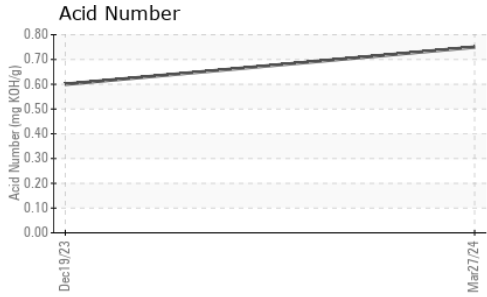
	method	limit/base	current	history1	history2
Silicon	ppm	ASTM D5185m >25	<b>2</b>	2	---
Sodium	ppm	ASTM D5185m	<b>0</b>	<1	---
Potassium	ppm	ASTM D5185m >20	<b>0</b>	0	---

## FLUID DEGRADATION

	method	limit/base	current	history1	history2
Acid Number (AN)	mg KOH/g	ASTM D8045	<b>0.75</b>	0.60	---



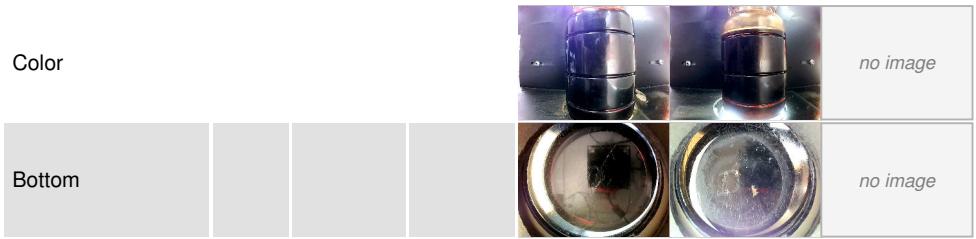
# OIL ANALYSIS REPORT



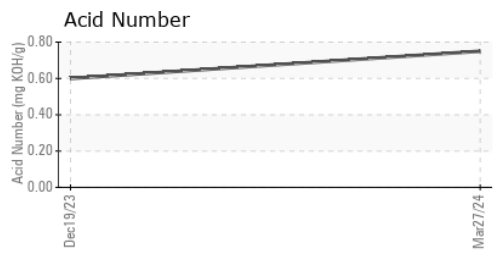
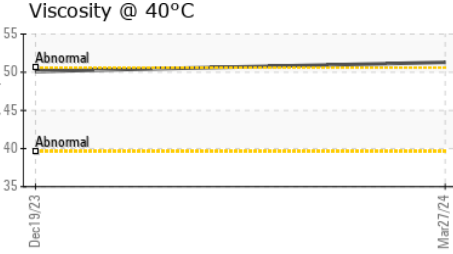
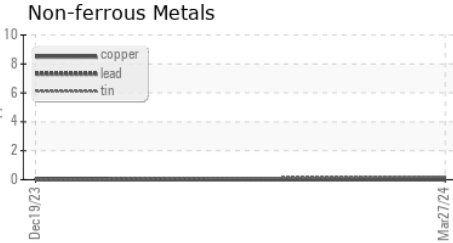
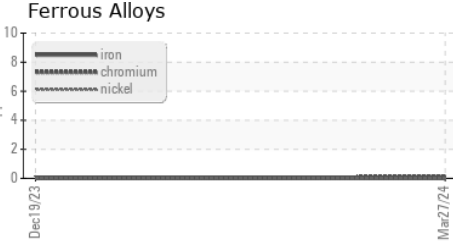
VISUAL	method	limit/base	current	history1	history2
White Metal	scalar	*Visual	NONE	NONE	---
Yellow Metal	scalar	*Visual	NONE	NONE	---
Precipitate	scalar	*Visual	NONE	NONE	---
Silt	scalar	*Visual	NONE	NONE	---
Debris	scalar	*Visual	NONE	NONE	LIGHT
Sand/Dirt	scalar	*Visual	NONE	NONE	---
Appearance	scalar	*Visual	NORML	NORML	---
Odor	scalar	*Visual	NORML	NORML	---
Emulsified Water	scalar	*Visual	>0.1	NEG	---
Free Water	scalar	*Visual		NEG	---

FLUID PROPERTIES	method	limit/base	current	history1	history2
Visc @ 40°C	cSt	ASTM D445	51.3	50.1	---

SAMPLE IMAGES	method	limit/base	current	history1	history2
---------------	--------	------------	---------	----------	----------



## GRAPHS



**Laboratory** : WearCheck USA - 501 Madison Ave., Cary, NC 27513  
**Sample No.** : UCH06152077      **Received** : 17 Apr 2024  
**Lab Number** : 06152077      **Tested** : 18 Apr 2024  
**Unique Number** : 10982155      **Diagnosed** : 19 Apr 2024 - Sean Felton  
**Test Package** : IND 2

**TOTAL EQUIPMENT COMPANY**  
 200 SMILEY DR  
 SAINT ALBANS, WV  
 US 25177  
 Contact: Jeremy Weimer  
 jeremy.weimer@totalequipment.com

To discuss this sample report, contact Customer Service at 1-800-237-1369.  
 \* - Denotes test methods that are outside of the ISO 17025 scope of accreditation.  
 Statements of conformity to specifications are based on the simple acceptance decision rule (JCGM 106:2012)