

Area

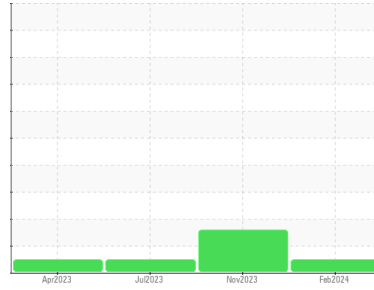
**NOT GIVEN**

Machine Id

**SULLIVAN PALATEK 22LE003499 - CMS LAND**

Component

**Compressor**



**DIAGNOSIS**

**Recommendation**

Resample at the next service interval to monitor.

**Wear**

All component wear rates are normal.

**Contamination**

There is no indication of any contamination in the oil.

**Fluid Condition**

The AN level is acceptable for this fluid. The condition of the oil is suitable for further service.

| SAMPLE INFORMATION |             | method      | limit/base | current            | history1    | history2    |
|--------------------|-------------|-------------|------------|--------------------|-------------|-------------|
| Sample Number      | Client Info |             |            | <b>UCS06152123</b> | UCS06045013 | UCS05911323 |
| Sample Date        | Client Info |             |            | <b>13 Feb 2024</b> | 09 Nov 2023 | 25 Jul 2023 |
| Machine Age        | hrs         | Client Info |            | <b>4029</b>        | 3087        | 2096        |
| Oil Age            | hrs         | Client Info |            | <b>4029</b>        | 3087        | 2096        |
| Oil Changed        | Client Info |             |            | <b>Changed</b>     | Not Changd  | Not Changd  |
| Sample Status      |             |             |            | <b>NORMAL</b>      | ABNORMAL    | NORMAL      |

| CONTAMINATION |           | method | limit/base | current    | history1 | history2 |
|---------------|-----------|--------|------------|------------|----------|----------|
| Water         | WC Method |        | >0.1       | <b>NEG</b> | NEG      | NEG      |

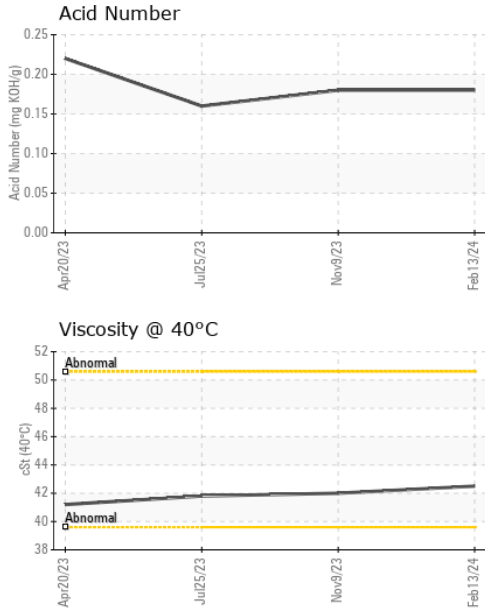
| WEAR METALS |     | method      | limit/base | current      | history1 | history2 |
|-------------|-----|-------------|------------|--------------|----------|----------|
| Iron        | ppm | ASTM D5185m | >50        | <b>0</b>     | 0        | 2        |
| Chromium    | ppm | ASTM D5185m | >10        | <b>0</b>     | 0        | 0        |
| Nickel      | ppm | ASTM D5185m |            | <b>0</b>     | 0        | 0        |
| Titanium    | ppm | ASTM D5185m |            | <b>0</b>     | <1       | 0        |
| Silver      | ppm | ASTM D5185m |            | <b>0</b>     | 0        | 0        |
| Aluminum    | ppm | ASTM D5185m | >25        | <b>0</b>     | 0        | <1       |
| Lead        | ppm | ASTM D5185m | >25        | <b>0</b>     | 0        | <1       |
| Copper      | ppm | ASTM D5185m | >50        | <b>1</b>     | 2        | 3        |
| Tin         | ppm | ASTM D5185m | >15        | <b>&lt;1</b> | <1       | <1       |
| Vanadium    | ppm | ASTM D5185m |            | <b>0</b>     | 0        | 0        |
| Cadmium     | ppm | ASTM D5185m |            | <b>0</b>     | 0        | 0        |

| ADDITIVES  |     | method      | limit/base | current      | history1 | history2 |
|------------|-----|-------------|------------|--------------|----------|----------|
| Boron      | ppm | ASTM D5185m |            | <b>0</b>     | 0        | 0        |
| Barium     | ppm | ASTM D5185m |            | <b>0</b>     | 0        | 0        |
| Molybdenum | ppm | ASTM D5185m |            | <b>0</b>     | 0        | 0        |
| Manganese  | ppm | ASTM D5185m |            | <b>&lt;1</b> | <1       | 0        |
| Magnesium  | ppm | ASTM D5185m |            | <b>0</b>     | 0        | 0        |
| Calcium    | ppm | ASTM D5185m |            | <b>&lt;1</b> | 0        | 0        |
| Phosphorus | ppm | ASTM D5185m |            | <b>668</b>   | 591      | 627      |
| Zinc       | ppm | ASTM D5185m |            | <b>0</b>     | 0        | 0        |
| Sulfur     | ppm | ASTM D5185m |            | <b>763</b>   | 525      | 688      |

| CONTAMINANTS |     | method      | limit/base | current  | history1 | history2 |
|--------------|-----|-------------|------------|----------|----------|----------|
| Silicon      | ppm | ASTM D5185m | >25        | <b>2</b> | 1        | 1        |
| Sodium       | ppm | ASTM D5185m |            | <b>1</b> | 1        | 0        |
| Potassium    | ppm | ASTM D5185m | >20        | <b>2</b> | 0        | <1       |

| FLUID DEGRADATION |          | method     | limit/base | current     | history1 | history2 |
|-------------------|----------|------------|------------|-------------|----------|----------|
| Acid Number (AN)  | mg KOH/g | ASTM D8045 |            | <b>0.18</b> | 0.18     | 0.16     |

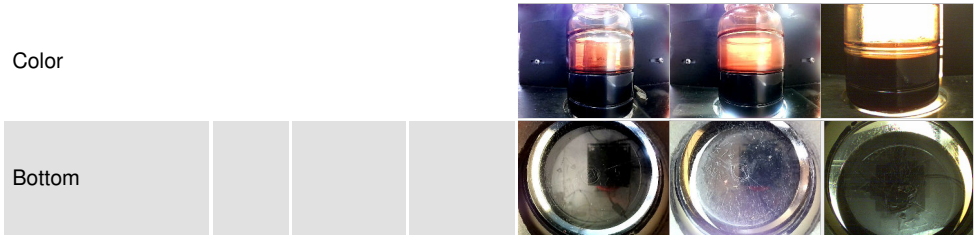
# OIL ANALYSIS REPORT



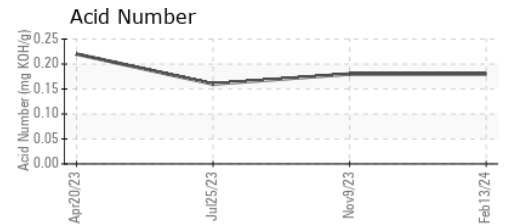
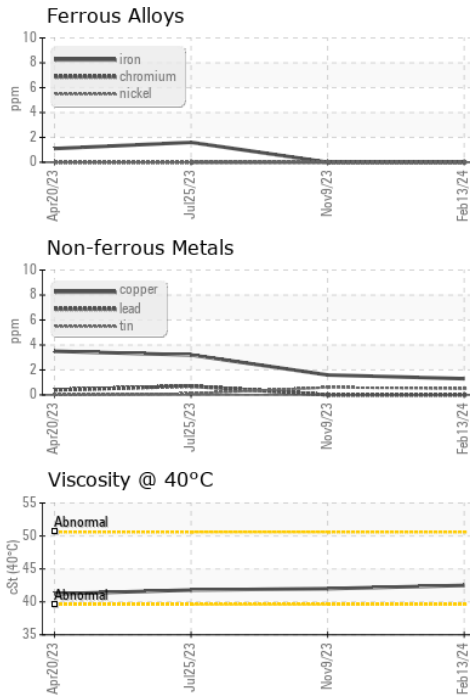
| VISUAL           | method | limit/base | current | history1 | history2 |
|------------------|--------|------------|---------|----------|----------|
| White Metal      | scalar | *Visual    | NONE    | NONE     | NONE     |
| Yellow Metal     | scalar | *Visual    | NONE    | NONE     | NONE     |
| Precipitate      | scalar | *Visual    | NONE    | NONE     | NONE     |
| Silt             | scalar | *Visual    | NONE    | NONE     | NONE     |
| Debris           | scalar | *Visual    | NONE    | NONE     | NONE     |
| Sand/Dirt        | scalar | *Visual    | NONE    | NONE     | NONE     |
| Appearance       | scalar | *Visual    | NORML   | NORML    | NORML    |
| Odor             | scalar | *Visual    | NORML   | NORML    | NORML    |
| Emulsified Water | scalar | *Visual    | >0.1    | NEG      | 0.2%     |
| Free Water       | scalar | *Visual    |         | NEG      | NEG      |

| FLUID PROPERTIES | method | limit/base | current | history1 | history2 |
|------------------|--------|------------|---------|----------|----------|
| Visc @ 40°C      | cSt    | ASTM D445  | 42.5    | 42.0     | 41.8     |

| SAMPLE IMAGES | method | limit/base | current | history1 | history2 |
|---------------|--------|------------|---------|----------|----------|
|---------------|--------|------------|---------|----------|----------|



## GRAPHS



Certificate L2367

**Laboratory** : WearCheck USA - 501 Madison Ave., Cary, NC 27513  
**Sample No.** : UCS06152123  
**Lab Number** : 06152123  
**Unique Number** : 10982201  
**Test Package** : IND 2  
**Received** : 17 Apr 2024  
**Tested** : 18 Apr 2024  
**Diagnosed** : 19 Apr 2024 - Sean Felton

To discuss this sample report, contact Customer Service at 1-800-237-1369.

\* - Denotes test methods that are outside of the ISO 17025 scope of accreditation.

Statements of conformity to specifications are based on the simple acceptance decision rule (JCGM 106:2012)

**AIRLEX**

TRAVERSE CITY, MI  
 US 49686  
 Contact: MIKE  
 office@airlex.com  
 T: (231)929-1601  
 F: