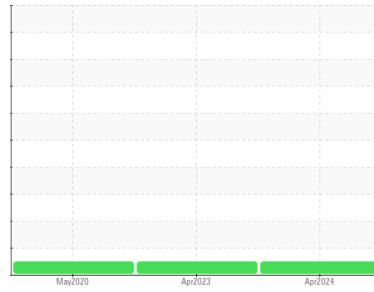




FUEL REPORT

Sample Rating Trend



NORMAL



Area

[PMOAS2434]

Machine Id

1DLC1000-2M (S/N P1303050004)

Component

Diesel Fuel

Fluid

No.2 DIESEL FUEL (ULTRALOW SULPHUR) (--- GAL)

DIAGNOSIS

Recommendation

All laboratory tests indicate that this sample meets specifications for No.2 diesel fuel, ultra-low sulfur.

Corrosion

All metal levels are normal indicating no corrosion in the system.

Contaminants

The water content is negligible. There is no Bacteria, Yeast and/or Fungus indicated in the sample. There is no indication of any contamination in the fuel.

Fuel Condition

Sulfur value derived by ASTM D4294 method for ULSD validation. Sulfur level is acceptable for ULSD specification.

SAMPLE INFORMATION		method	limit/base	current	history1	history2
Sample Number	Client Info			DC0035923	DC0029068	DCDF01961
Sample Date	Client Info			15 Apr 2024	10 Apr 2023	16 May 2020
Machine Age	hrs	Client Info		210	175	0
Sample Status				NORMAL	NORMAL	NORMAL

PHYSICAL PROPERTIES		method	limit/base	current	history1	history2
ASTM Color	scalar	*ASTM D1500		L4.5	L4.5	L5.5
Visc @ 40°C	cSt	ASTM D445	3.0	2.4	2.4	2.53

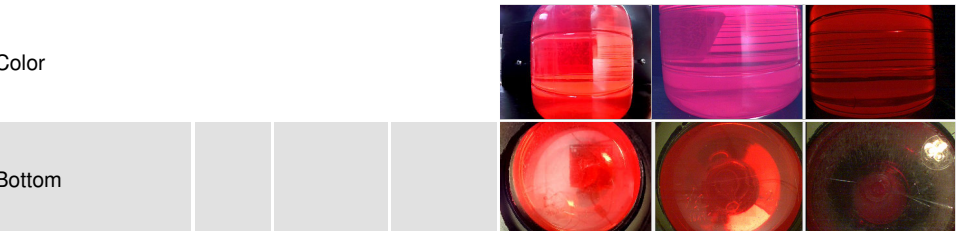
SULFUR CONTENT		method	limit/base	current	history1	history2
Sulfur	ppm	ASTM D5185m	10	0	0	10
Sulfur (UVF)	ppm	ASTM D5453		9	11	12

IGNITION QUALITY		method	limit/base	current	history1	history2
API Gravity		ASTM D7777	37.7	37.1	37.2	36.7

CONTAMINANTS		method	limit/base	current	history1	history2
Silicon	ppm	ASTM D5185m	<1.0	<1	<1	0
Sodium	ppm	ASTM D5185m	<0.1	<1	0	0
Potassium	ppm	ASTM D5185m	<0.1	0	<1	0
Water	%	ASTM D6304	<0.05	0.003	0.002	0.004
ppm Water	ppm	ASTM D6304	<500	29	24.8	43.9
% Gasoline	%	*In-House	<0.50	0.0	0.0	0.0
% Biodiesel	%	*In-House	<20.0	0.0	0.0	0.0

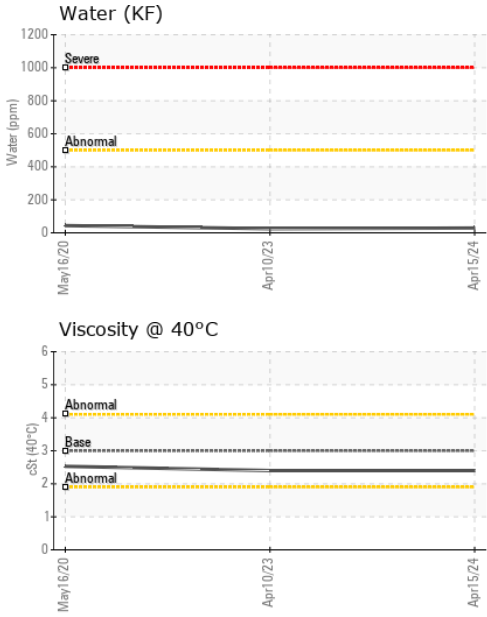
HEAVY METALS		method	limit/base	current	history1	history2
Aluminum	ppm	ASTM D5185m	<0.1	0	0	0
Nickel	ppm	ASTM D5185m	<0.1	0	0	<1
Lead	ppm	ASTM D5185m	<0.1	0	0	0
Vanadium	ppm	ASTM D5185m	<0.1	0	0	0
Iron	ppm	ASTM D5185m	<0.1	0	0	0
Calcium	ppm	ASTM D5185m	<0.1	0	<1	<1
Magnesium	ppm	ASTM D5185m	<0.1	0	<1	0
Phosphorus	ppm	ASTM D5185m	<0.1	0	6	3
Zinc	ppm	ASTM D5185m	<0.1	0	0	<1

SAMPLE IMAGES		method	limit/base	current	history1	history2
---------------	--	--------	------------	---------	----------	----------

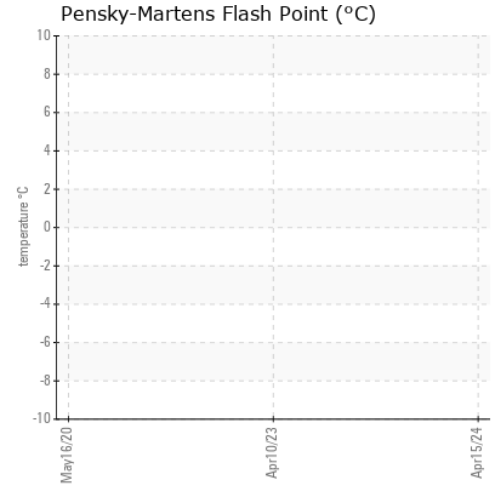




FUEL REPORT



GRAPHS



Certificate L2367

Laboratory : WearCheck USA - 501 Madison Ave., Cary, NC 27513
Sample No. : DC0035923
Lab Number : 06152458
Unique Number : 10982536
Test Package : DF-5 (Additional Tests: API, Cetane, Fuel, Screen)

Received : 17 Apr 2024
Tested : 30 Apr 2024
Diagnosed : 06 May 2024 - Doug Bogart

KELLY GENERATOR & EQUIPMENT INC
 1955 DALE LN
 OWINGS, MD
 US 20736

Contact: LESLIE SNURR
 LSNURR@KGE.COM

To discuss this sample report, contact Customer Service at 1-800-237-1369.

* - Denotes test methods that are outside of the ISO 17025 scope of accreditation.

Statements of conformity to specifications are based on the simple acceptance decision rule (JCGM 106:2012)

T: (410)257-5225

F: (410)257-5227