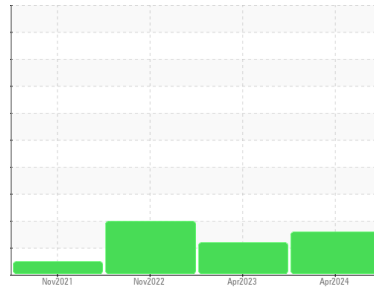




# OIL ANALYSIS REPORT

Sample Rating Trend



Machine Id  
**KAESER 67117895**  
 Component  
**Compressor**  
 Fluid  
**KAESER SIGMA (OEM) S-460 (--- GAL)**

## DIAGNOSIS

**Recommendation**  
 No corrective action is recommended at this time. The filter change at the time of sampling has been noted. Resample at the next service interval to monitor.

**Wear**  
 All component wear rates are normal.

**Contamination**  
 There is a high amount of particulates present in the oil.

**Fluid Condition**  
 The AN level is acceptable for this fluid. The condition of the oil is suitable for further service.

SAMPLE INFORMATION		method	limit/base	current	history1	history2
Sample Number	Client Info			<b>KCPA017056</b>	KCP53229	KCP40011D
Sample Date	Client Info			<b>09 Apr 2024</b>	25 Apr 2023	21 Nov 2022
Machine Age	hrs	Client Info		<b>16232</b>	10467	8455
Oil Age	hrs	Client Info		<b>2453</b>	4819	832
Oil Changed	Client Info			<b>Not Chngd</b>	Not Chngd	Not Chngd
Sample Status				<b>ABNORMAL</b>	ATTENTION	ABNORMAL

WEAR METALS		method	limit/base	current	history1	history2
Iron	ppm	ASTM D5185m	>50	<b>0</b>	0	0
Chromium	ppm	ASTM D5185m	>10	<b>0</b>	0	0
Nickel	ppm	ASTM D5185m	>3	<b>0</b>	0	0
Titanium	ppm	ASTM D5185m	>3	<b>0</b>	0	0
Silver	ppm	ASTM D5185m	>2	<b>0</b>	0	0
Aluminum	ppm	ASTM D5185m	>10	<b>0</b>	0	<1
Lead	ppm	ASTM D5185m	>10	<b>0</b>	0	0
Copper	ppm	ASTM D5185m	>50	<b>5</b>	5	1
Tin	ppm	ASTM D5185m	>10	<b>&lt;1</b>	0	0
Antimony	ppm	ASTM D5185m		<b>---</b>	---	---
Vanadium	ppm	ASTM D5185m		<b>0</b>	0	0
Cadmium	ppm	ASTM D5185m		<b>0</b>	0	0

ADDITIVES		method	limit/base	current	history1	history2
Boron	ppm	ASTM D5185m		<b>0</b>	0	0
Barium	ppm	ASTM D5185m	90	<b>25</b>	24	41
Molybdenum	ppm	ASTM D5185m		<b>0</b>	0	0
Manganese	ppm	ASTM D5185m		<b>&lt;1</b>	0	0
Magnesium	ppm	ASTM D5185m	90	<b>62</b>	58	77
Calcium	ppm	ASTM D5185m	2	<b>1</b>	1	2
Phosphorus	ppm	ASTM D5185m		<b>0</b>	0	<1
Zinc	ppm	ASTM D5185m		<b>0</b>	10	4
Sulfur	ppm	ASTM D5185m		<b>21622</b>	16077	20722

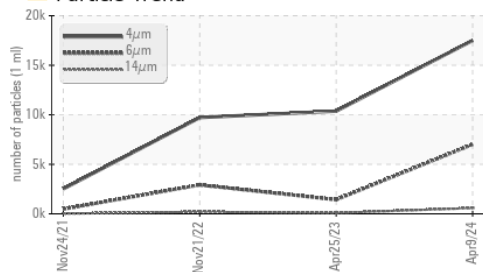
CONTAMINANTS		method	limit/base	current	history1	history2
Silicon	ppm	ASTM D5185m	>25	<b>&lt;1</b>	0	<1
Sodium	ppm	ASTM D5185m		<b>23</b>	14	20
Potassium	ppm	ASTM D5185m	>20	<b>4</b>	3	1
Water	%	ASTM D6304	>0.05	<b>0.023</b>	0.019	0.027
ppm Water	ppm	ASTM D6304	>500	<b>237</b>	192.9	275.0

FLUID CLEANLINESS		method	limit/base	current	history1	history2
Particles >4µm		ASTM D7647		<b>17504</b>	10367	9721
Particles >6µm		ASTM D7647	>1300	<b>▲ 7015</b>	● 1422	▲ 2919
Particles >14µm		ASTM D7647	>80	<b>▲ 580</b>	● 82	▲ 200
Particles >21µm		ASTM D7647	>20	<b>▲ 112</b>	12	▲ 59
Particles >38µm		ASTM D7647	>4	<b>3</b>	1	▲ 5
Particles >71µm		ASTM D7647	>3	<b>1</b>	0	0
Oil Cleanliness		ISO 4406 (c)	>--/17/13	<b>▲ 21/20/16</b>	● 21/18/14	▲ 20/19/15

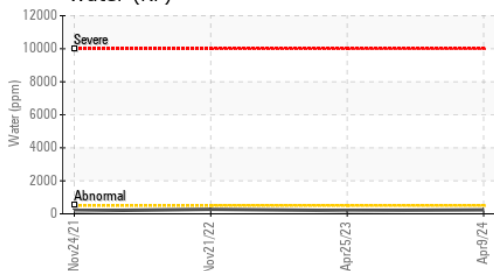
FLUID DEGRADATION		method	limit/base	current	history1	history2
Acid Number (AN)	mg KOH/g	ASTM D8045	0.4	<b>0.34</b>	0.34	0.34

# OIL ANALYSIS REPORT

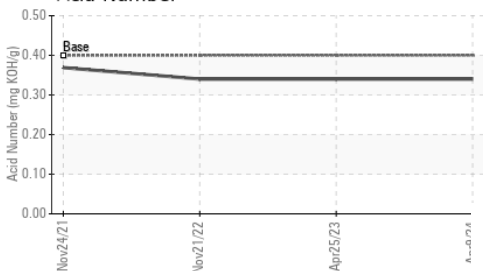
## Particle Trend



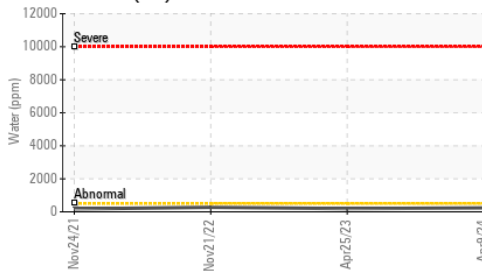
## Water (KF)



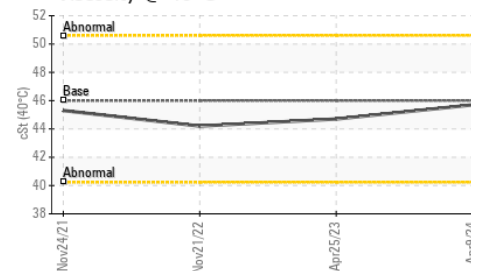
## Acid Number



## Water (KF)



## Viscosity @ 40°C

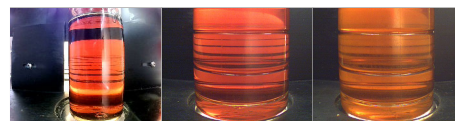


VISUAL	method	limit/base	current	history1	history2
White Metal	scalar	*Visual	NONE	NONE	NONE
Yellow Metal	scalar	*Visual	NONE	NONE	NONE
Precipitate	scalar	*Visual	NONE	NONE	NONE
Silt	scalar	*Visual	NONE	NONE	NONE
Debris	scalar	*Visual	NONE	NONE	NONE
Sand/Dirt	scalar	*Visual	NONE	NONE	NONE
Appearance	scalar	*Visual	NORML	NORML	NORML
Odor	scalar	*Visual	NORML	NORML	NORML
Emulsified Water	scalar	*Visual	>0.05	NEG	NEG
Free Water	scalar	*Visual		NEG	NEG

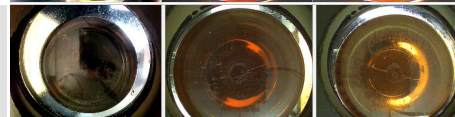
FLUID PROPERTIES	method	limit/base	current	history1	history2
Visc @ 40°C	cSt	ASTM D445	46	45.7	44.7

SAMPLE IMAGES	method	limit/base	current	history1	history2
---------------	--------	------------	---------	----------	----------

Color

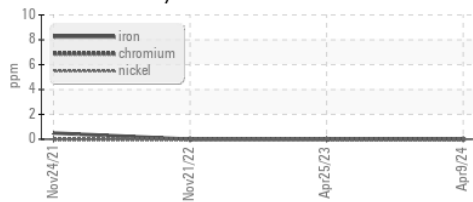


Bottom

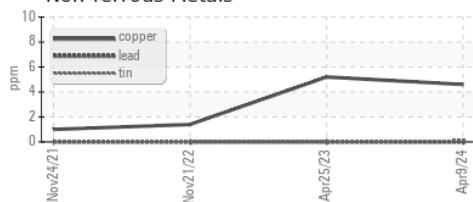


## GRAPHS

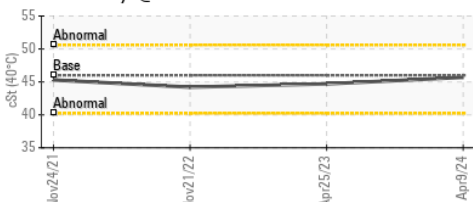
### Ferrous Alloys



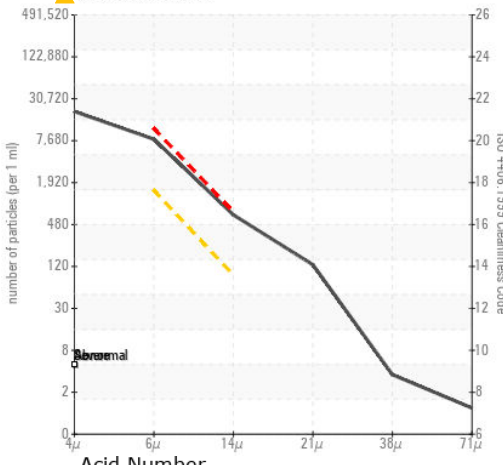
### Non-ferrous Metals



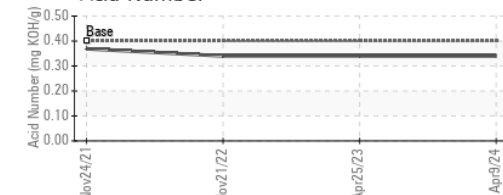
### Viscosity @ 40°C



### Particle Count



### Acid Number



Certificate L2367

Laboratory : WearCheck USA - 501 Madison Ave., Cary, NC 27513

Sample No. : KCPA017056

Lab Number : 06153145

Unique Number : 10983223

Test Package : IND 2 ( Additional Tests: KF, PrtCount )

To discuss this sample report, contact Customer Service at 1-800-237-1369.

\* - Denotes test methods that are outside of the ISO 17025 scope of accreditation.

Statements of conformity to specifications are based on the simple acceptance decision rule (JCGM 106:2012)

Received : 18 Apr 2024

Tested : 19 Apr 2024

Diagnosed : 22 Apr 2024 - Don Baldrige

AMAZON

191 NORFOLK WAY

BYHALIA, MS

US 38611

Contact: Service Manager

T:

F: