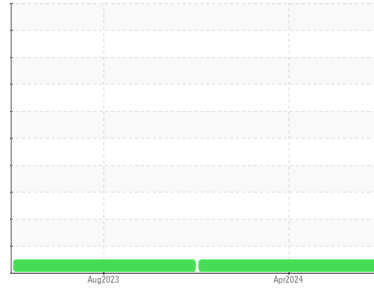




OIL ANALYSIS REPORT

Sample Rating Trend



NORMAL



Area

ALL ADVANTAGE [152545]

Machine Id

S337284 - PREMIER TOOLING

Component

Compressor

DIAGNOSIS

Recommendation

Resample at the next service interval to monitor.

Wear

All component wear rates are normal.

Contamination

There is no indication of any contamination in the component.

Fluid Condition

The AN level is acceptable for this fluid. The condition of the oil is suitable for further service.

| SAMPLE INFORMATION | | method | limit/base | current | history1 | history2 |
|--------------------|-------------|-------------|------------|--------------------|-------------|----------|
| Sample Number | Client Info | | | UCH06153223 | UCH05957712 | --- |
| Sample Date | Client Info | | | 01 Apr 2024 | 28 Aug 2023 | --- |
| Machine Age | hrs | Client Info | | 22585 | 21280 | --- |
| Oil Age | hrs | Client Info | | 6145 | 2917 | --- |
| Oil Changed | Client Info | | | Not Chngd | Not Chngd | --- |
| Sample Status | | | | NORMAL | NORMAL | --- |

| CONTAMINATION | | method | limit/base | current | history1 | history2 |
|---------------|-----------|--------|------------|------------|----------|----------|
| Water | WC Method | | >0.1 | NEG | NEG | --- |

| WEAR METALS | | method | limit/base | current | history1 | history2 |
|-------------|-----|-------------|------------|--------------|----------|----------|
| Iron | ppm | ASTM D5185m | >50 | <1 | 2 | --- |
| Chromium | ppm | ASTM D5185m | >10 | 0 | 0 | --- |
| Nickel | ppm | ASTM D5185m | | 0 | <1 | --- |
| Titanium | ppm | ASTM D5185m | | 0 | 0 | --- |
| Silver | ppm | ASTM D5185m | | 0 | 0 | --- |
| Aluminum | ppm | ASTM D5185m | >25 | <1 | 0 | --- |
| Lead | ppm | ASTM D5185m | >25 | 0 | 0 | --- |
| Copper | ppm | ASTM D5185m | >50 | 1 | <1 | --- |
| Tin | ppm | ASTM D5185m | >15 | 0 | 0 | --- |
| Vanadium | ppm | ASTM D5185m | | 0 | 0 | --- |
| Cadmium | ppm | ASTM D5185m | | 0 | 0 | --- |

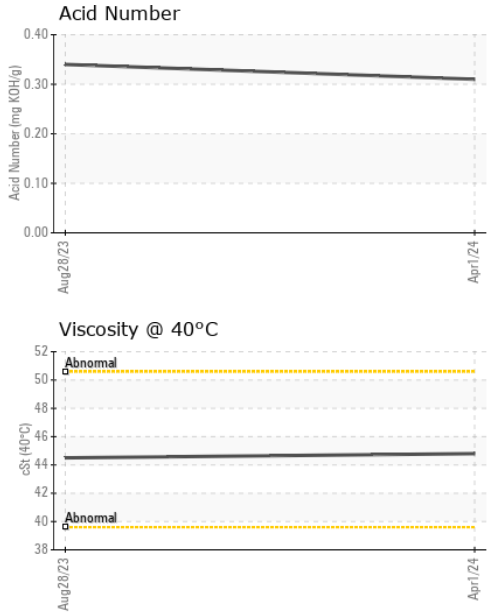
| ADDITIVES | | method | limit/base | current | history1 | history2 |
|------------|-----|-------------|------------|--------------|----------|----------|
| Boron | ppm | ASTM D5185m | | 0 | 0 | --- |
| Barium | ppm | ASTM D5185m | | 0 | 3 | --- |
| Molybdenum | ppm | ASTM D5185m | | 0 | <1 | --- |
| Manganese | ppm | ASTM D5185m | | 0 | 0 | --- |
| Magnesium | ppm | ASTM D5185m | | <1 | 0 | --- |
| Calcium | ppm | ASTM D5185m | | 0 | 0 | --- |
| Phosphorus | ppm | ASTM D5185m | | 325 | 349 | --- |
| Zinc | ppm | ASTM D5185m | | <1 | <1 | --- |
| Sulfur | ppm | ASTM D5185m | | 966 | 750 | --- |

| CONTAMINANTS | | method | limit/base | current | history1 | history2 |
|--------------|-----|-------------|------------|--------------|----------|----------|
| Silicon | ppm | ASTM D5185m | >25 | 0 | 1 | --- |
| Sodium | ppm | ASTM D5185m | | <1 | 0 | --- |
| Potassium | ppm | ASTM D5185m | >20 | 2 | <1 | --- |

| FLUID DEGRADATION | | method | limit/base | current | history1 | history2 |
|-------------------|----------|------------|------------|-------------|----------|----------|
| Acid Number (AN) | mg KOH/g | ASTM D8045 | | 0.31 | 0.34 | --- |



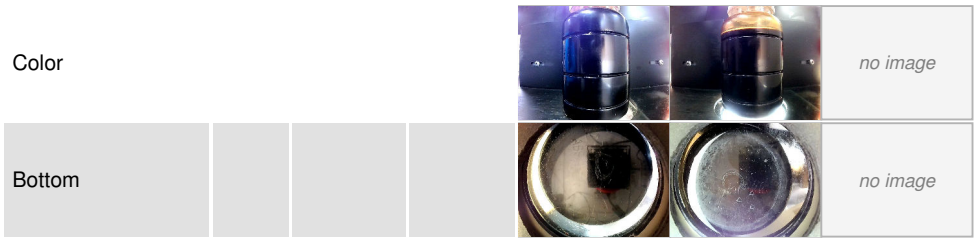
OIL ANALYSIS REPORT



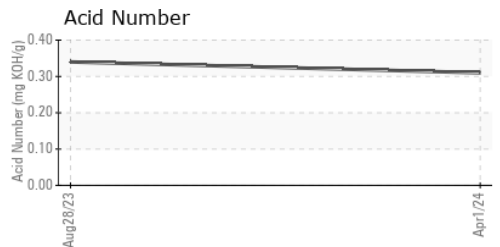
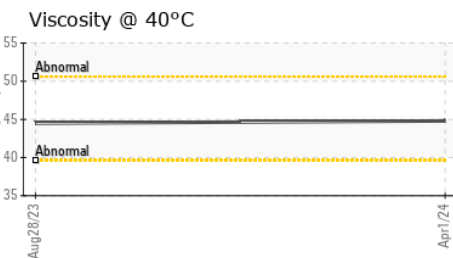
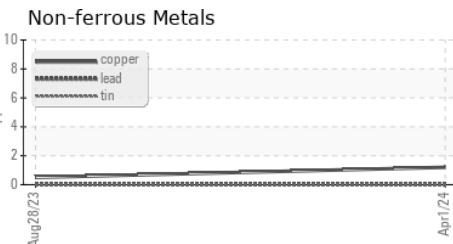
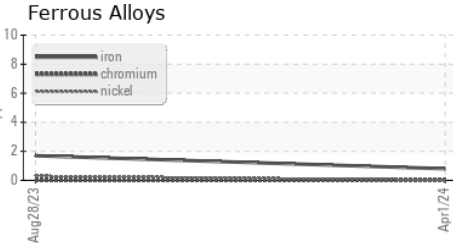
| VISUAL | method | limit/base | current | history1 | history2 |
|------------------|--------|------------|---------|----------|----------|
| White Metal | scalar | *Visual | NONE | NONE | --- |
| Yellow Metal | scalar | *Visual | NONE | NONE | --- |
| Precipitate | scalar | *Visual | NONE | NONE | --- |
| Silt | scalar | *Visual | NONE | NONE | --- |
| Debris | scalar | *Visual | NONE | NONE | --- |
| Sand/Dirt | scalar | *Visual | NONE | NONE | --- |
| Appearance | scalar | *Visual | NORML | NORML | --- |
| Odor | scalar | *Visual | NORML | NORML | --- |
| Emulsified Water | scalar | *Visual | >0.1 | NEG | --- |
| Free Water | scalar | *Visual | | NEG | --- |

| FLUID PROPERTIES | method | limit/base | current | history1 | history2 |
|------------------|--------|------------|-------------|----------|----------|
| Visc @ 40°C | cSt | ASTM D445 | 44.8 | 44.5 | --- |

| SAMPLE IMAGES | method | limit/base | current | history1 | history2 |
|---------------|--------|------------|---------|----------|----------|
|---------------|--------|------------|---------|----------|----------|



GRAPHS



Laboratory : WearCheck USA - 501 Madison Ave., Cary, NC 27513
Sample No. : UCH06153223 **Received** : 18 Apr 2024
Lab Number : **06153223** **Tested** : 19 Apr 2024
Unique Number : 10983301 **Diagnosed** : 22 Apr 2024 - Don Baldrige
Test Package : IND 2

A-L-L EQUIPMENT INC
 204 38TH ST
 MOLINE, IL
 US 61265
 Contact: KEVIN DESPOT
 kevind@a-l-equipment.com
 T: (815)877-7000
 F: (309)762-9950

To discuss this sample report, contact Customer Service at 1-800-237-1369.
 * - Denotes test methods that are outside of the ISO 17025 scope of accreditation.
 Statements of conformity to specifications are based on the simple acceptance decision rule (JCGM 106:2012)