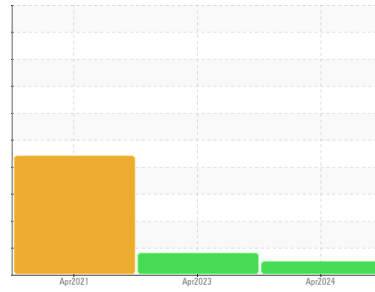




# OIL ANALYSIS REPORT

Sample Rating Trend



**NORMAL**



Machine Id  
**BC-8**  
 Component  
**Gearbox**  
 Fluid  
**GEAR OIL SAE 80W90 (--- QTS)**

## DIAGNOSIS

### Recommendation

Little or no information is provided as to the component and lubricant being tested. Recommendations are therefore generic in nature and may not apply to the current application. Please forward information as to equipment type, reservoir capacity, lubricant type and any pertinent information to allow for a more accurate assessment. Resample at the next service interval to monitor. NOTE: Please provide information regarding reservoir capacity, filter type and micron rating with next sample. Please specify the brand, type, and viscosity of the oil on your next sample.

### Wear

All component wear rates are normal.

### Contamination

There is no indication of any contamination in the oil.

### Fluid Condition

The AN level is acceptable for this fluid. The condition of the oil is suitable for further service.

## SAMPLE INFORMATION

	method	limit/base	current	history1	history2
Sample Number	Client Info		<b>IB0000330</b>	IB0000141	IB0000087
Sample Date	Client Info		<b>15 Apr 2024</b>	24 Apr 2023	01 Apr 2021
Machine Age	hrs	Client Info	<b>0</b>	0	0
Oil Age	hrs	Client Info	<b>0</b>	0	0
Oil Changed	Client Info		<b>N/A</b>	N/A	N/A
Sample Status			<b>NORMAL</b>	ABNORMAL	ABNORMAL

## CONTAMINATION

	method	limit/base	current	history1	history2
Water	WC Method	>0.2	<b>NEG</b>	NEG	NEG

## WEAR METALS

	method	limit/base	current	history1	history2
Iron	ppm	ASTM D5185m >200	<b>123</b>	▲ 396	136
Chromium	ppm	ASTM D5185m >15	<b>&lt;1</b>	2	<1
Nickel	ppm	ASTM D5185m >15	<b>&lt;1</b>	<1	0
Titanium	ppm	ASTM D5185m	<b>0</b>	0	0
Silver	ppm	ASTM D5185m	<b>0</b>	0	0
Aluminum	ppm	ASTM D5185m >25	<b>3</b>	2	2
Lead	ppm	ASTM D5185m >100	<b>0</b>	0	0
Copper	ppm	ASTM D5185m >200	<b>6</b>	1	<1
Tin	ppm	ASTM D5185m >25	<b>0</b>	<1	<1
Antimony	ppm	ASTM D5185m >5	<b>---</b>	---	0
Vanadium	ppm	ASTM D5185m	<b>0</b>	0	0
Cadmium	ppm	ASTM D5185m	<b>0</b>	0	0

## ADDITIVES

	method	limit/base	current	history1	history2
Boron	ppm	ASTM D5185m 400	<b>45</b>	18	6
Barium	ppm	ASTM D5185m 200	<b>&lt;1</b>	0	0
Molybdenum	ppm	ASTM D5185m 12	<b>0</b>	<1	<1
Manganese	ppm	ASTM D5185m	<b>2</b>	5	3
Magnesium	ppm	ASTM D5185m 12	<b>1</b>	2	0
Calcium	ppm	ASTM D5185m 150	<b>47</b>	47	12
Phosphorus	ppm	ASTM D5185m 1650	<b>907</b>	756	317
Zinc	ppm	ASTM D5185m 125	<b>113</b>	137	86
Sulfur	ppm	ASTM D5185m 22500	<b>24165</b>	20400	2244

## CONTAMINANTS

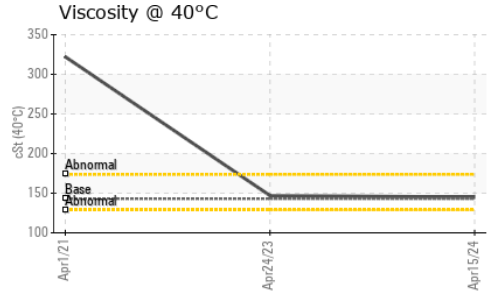
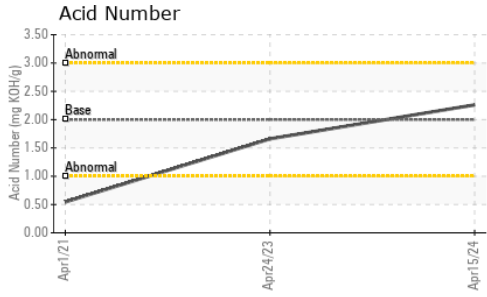
	method	limit/base	current	history1	history2
Silicon	ppm	ASTM D5185m >50	<b>47</b>	38	▲ 56
Sodium	ppm	ASTM D5185m >170	<b>12</b>	3	0
Potassium	ppm	ASTM D5185m >20	<b>4</b>	4	<1

## FLUID DEGRADATION

	method	limit/base	current	history1	history2
Acid Number (AN)	mg KOH/g	ASTM D8045 2.00	<b>2.26</b>	1.66	0.545



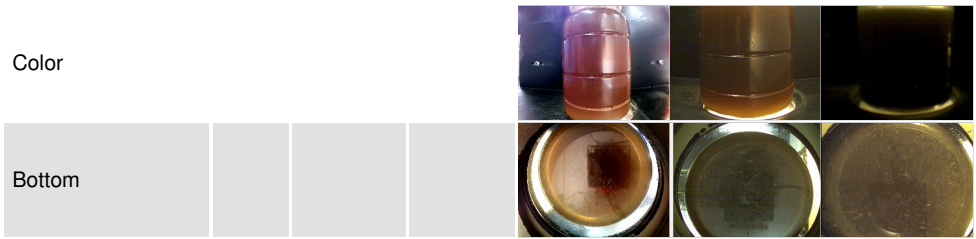
# OIL ANALYSIS REPORT



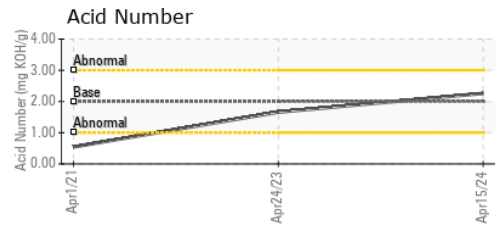
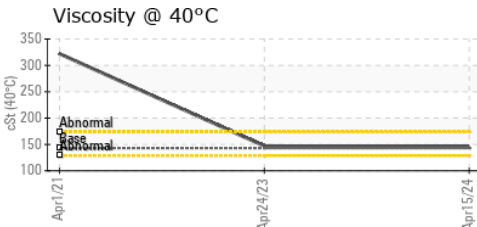
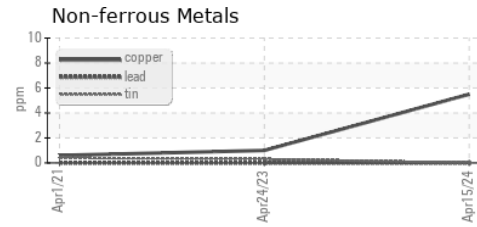
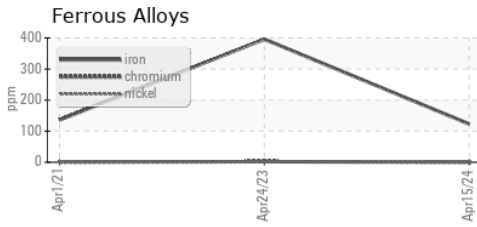
VISUAL	method	limit/base	current	history1	history2
White Metal	scalar	*Visual	NONE	NONE	LIGHT
Yellow Metal	scalar	*Visual	NONE	NONE	NONE
Precipitate	scalar	*Visual	NONE	NONE	NONE
Silt	scalar	*Visual	NONE	NONE	NONE
Debris	scalar	*Visual	NONE	NONE	LIGHT
Sand/Dirt	scalar	*Visual	NONE	NONE	NONE
Appearance	scalar	*Visual	NORML	NORML	HAZY
Odor	scalar	*Visual	NORML	NORML	NORML
Emulsified Water	scalar	*Visual	>0.2	NEG	0.2%
Free Water	scalar	*Visual		NEG	NEG

FLUID PROPERTIES	method	limit/base	current	history1	history2
Visc @ 40°C	cSt	ASTM D445	143	145	147

SAMPLE IMAGES	method	limit/base	current	history1	history2
---------------	--------	------------	---------	----------	----------



## GRAPHS



**Laboratory** : WearCheck USA - 501 Madison Ave., Cary, NC 27513  
**Sample No.** : IB0000330      **Received** : 18 Apr 2024  
**Lab Number** : 06153239      **Tested** : 19 Apr 2024  
**Unique Number** : 10983317      **Diagnosed** : 19 Apr 2024 - Wes Davis  
**Test Package** : IND 2

**BARTLETT GRAIN**  
 15 NE 60 AVE  
 GREAT BEND, KS  
 US 67530  
 Contact: ADAM HOFFMAN  
 a.hoffman@bartlett-grain.com  
 T: (620)282-2548  
 F:

To discuss this sample report, contact Customer Service at 1-800-237-1369.

\* - Denotes test methods that are outside of the ISO 17025 scope of accreditation.

Statements of conformity to specifications are based on the simple acceptance decision rule (JCGM 106:2012)