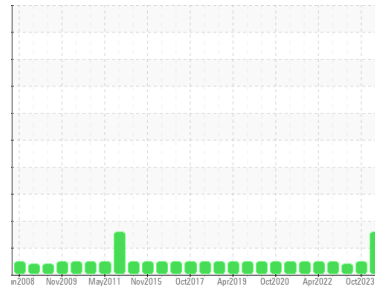




OIL ANALYSIS REPORT

Sample Rating Trend



WATER



Area

LFC-1030-CM-01-CM030 [1958017]

Machine Id

DM01PP02-1030 - SINE CHEESE PUMP DRY MIXER #1 NORTH (S/N 309297/02/00)

Component

Gearbox

Fluid

LE 4220 (--- GAL)

DIAGNOSIS

Recommendation

Resample at the next service interval to monitor.

Wear

All component wear rates are normal.

Contamination

There is a light concentration of water present in the oil.

Fluid Condition

The AN level is acceptable for this fluid. The condition of the oil is suitable for further service.

SAMPLE INFORMATION

	method	limit/base	current	history1	history2
Sample Number	Client Info		WC0882103	WC0851562	WC0793920
Sample Date	Client Info		15 Apr 2024	20 Oct 2023	19 Apr 2023
Machine Age	hrs	Client Info	180	0	0
Oil Age	hrs	Client Info	180	0	0
Oil Changed	Client Info		N/A	N/A	N/A
Sample Status			MARGINAL	NORMAL	ABNORMAL

WEAR METALS

	method	limit/base	current	history1	history2
Iron	ppm	ASTM D5185m >200	153	160	164
Chromium	ppm	ASTM D5185m >15	<1	<1	<1
Nickel	ppm	ASTM D5185m >15	<1	0	0
Titanium	ppm	ASTM D5185m	<1	0	0
Silver	ppm	ASTM D5185m	<1	0	0
Aluminum	ppm	ASTM D5185m >25	1	0	<1
Lead	ppm	ASTM D5185m >100	<1	0	0
Copper	ppm	ASTM D5185m >200	2	1	<1
Tin	ppm	ASTM D5185m >25	<1	0	0
Vanadium	ppm	ASTM D5185m	<1	0	0
Cadmium	ppm	ASTM D5185m	<1	0	0

ADDITIVES

	method	limit/base	current	history1	history2
Boron	ppm	ASTM D5185m	0	0	0
Barium	ppm	ASTM D5185m	0	0	0
Molybdenum	ppm	ASTM D5185m	<1	0	0
Manganese	ppm	ASTM D5185m	1	2	2
Magnesium	ppm	ASTM D5185m	<1	0	5
Calcium	ppm	ASTM D5185m	7	5	4
Phosphorus	ppm	ASTM D5185m	409	432	421
Zinc	ppm	ASTM D5185m	59	69	68
Sulfur	ppm	ASTM D5185m	5294	4654	5862

CONTAMINANTS

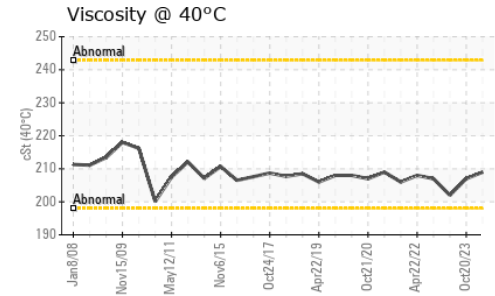
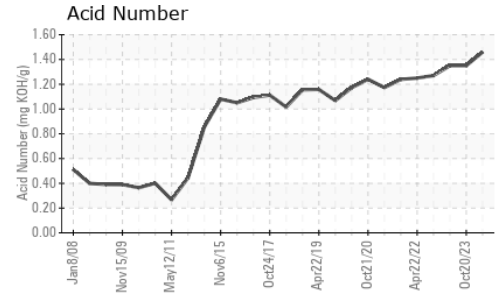
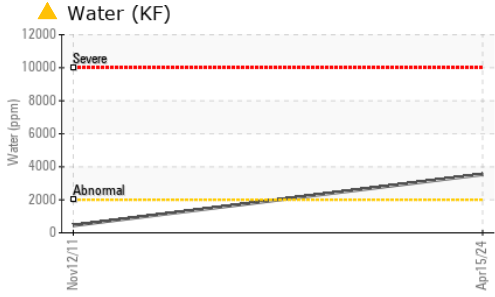
	method	limit/base	current	history1	history2
Silicon	ppm	ASTM D5185m >50	18	21	21
Sodium	ppm	ASTM D5185m	5	5	5
Potassium	ppm	ASTM D5185m >20	2	0	<1
Water	%	ASTM D6304 >0.2	▲ 0.354	---	---
ppm Water	ppm	ASTM D6304 >2000	▲ 3540	---	---

FLUID DEGRADATION

	method	limit/base	current	history1	history2
Acid Number (AN)	mg KOH/g	ASTM D8045	1.46	1.35	1.35



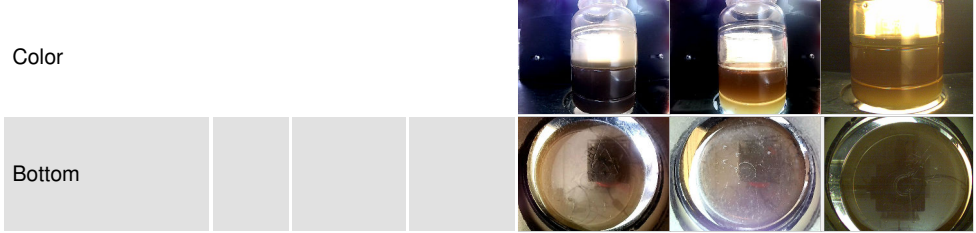
OIL ANALYSIS REPORT



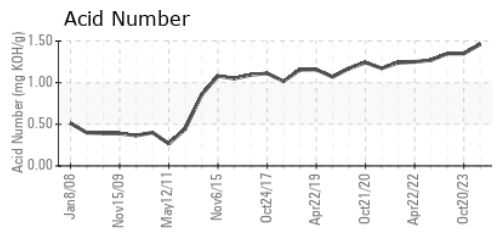
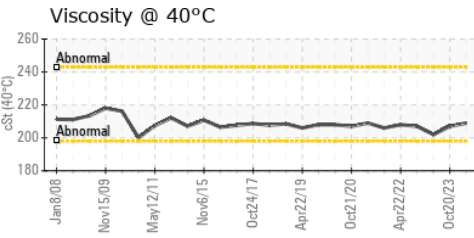
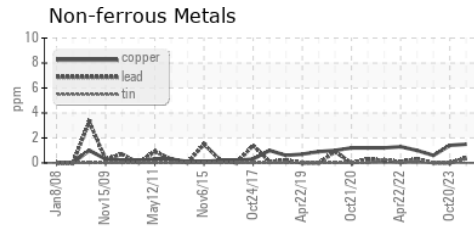
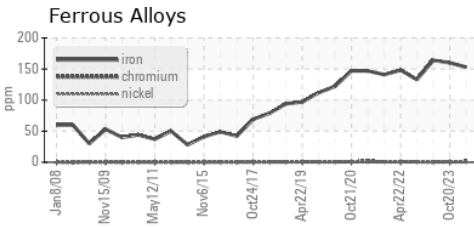
VISUAL	method	limit/base	current	history1	history2
White Metal	scalar	*Visual	NONE	LIGHT	NONE
Yellow Metal	scalar	*Visual	NONE	NONE	NONE
Precipitate	scalar	*Visual	NONE	NONE	NONE
Silt	scalar	*Visual	NONE	NONE	NONE
Debris	scalar	*Visual	NONE	LIGHT	▲ MODER
Sand/Dirt	scalar	*Visual	NONE	NONE	NONE
Appearance	scalar	*Visual	NORML	NORML	NORML
Odor	scalar	*Visual	NORML	NORML	NORML
Emulsified Water	scalar	*Visual	>0.2	NEG	NEG
Free Water	scalar	*Visual		NEG	NEG

FLUID PROPERTIES	method	limit/base	current	history1	history2
Visc @ 40°C	cSt	ASTM D445	209	207	202

SAMPLE IMAGES	method	limit/base	current	history1	history2
---------------	--------	------------	---------	----------	----------



GRAPHS



Laboratory : WearCheck USA - 501 Madison Ave., Cary, NC 27513
Sample No. : WC0882103 **Received** : 19 Apr 2024
Lab Number : 06154562 **Tested** : 23 Apr 2024
Unique Number : 10989985 **Diagnosed** : 23 Apr 2024 - Don Baldrige
Test Package : IND 2 (Additional Tests: KF)

LEPRINO FOODS - ALLENDALE
 4700 RICH STREET
 ALLENDALE, MI
 US 49401
 Contact: BILL FERRIER
 BFERRIER@LEPRINOFOODS.COM

To discuss this sample report, contact Customer Service at 1-800-237-1369.
 * - Denotes test methods that are outside of the ISO 17025 scope of accreditation.
 Statements of conformity to specifications are based on the simple acceptance decision rule (JCGM 106:2012)