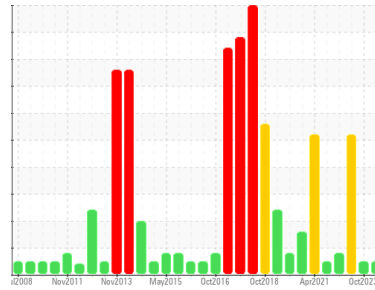




OIL ANALYSIS REPORT

Sample Rating Trend



NORMAL



Area

LFC-1030-CM-01-CM031 [1958019]

Machine Id

FS03PP01-1030 - FINESAVER 3/4 PD PUMP

Component

Gearbox

Fluid

{not provided} (--- GAL)

DIAGNOSIS

Recommendation

Resample at the next service interval to monitor. NOTE: Please provide information regarding reservoir capacity, filter type and micron rating with next sample. Please specify the brand, type, and viscosity of the oil on your next sample.

Wear

All component wear rates are normal.

Contamination

There is no indication of any contamination in the oil.

Fluid Condition

The AN level is acceptable for this fluid. The condition of the oil is suitable for further service.

SAMPLE INFORMATION

method	limit/base	current	history1	history2
Sample Number	Client Info	WC0913997	WC0851575	WC0793924
Sample Date	Client Info	15 Apr 2024	20 Oct 2023	19 Apr 2023
Machine Age	days	0	0	0
Oil Age	days	0	0	0
Oil Changed	Client Info	N/A	N/A	N/A
Sample Status		NORMAL	NORMAL	ABNORMAL

CONTAMINATION

method	limit/base	current	history1	history2
Water	WC Method >0.2	NEG	NEG	NEG

WEAR METALS

method	limit/base	current	history1	history2
Iron	ppm ASTM D5185m >200	149	137	110
Chromium	ppm ASTM D5185m >15	2	1	3
Nickel	ppm ASTM D5185m >15	<1	0	4
Titanium	ppm ASTM D5185m	<1	0	0
Silver	ppm ASTM D5185m	<1	0	0
Aluminum	ppm ASTM D5185m >25	2	<1	<1
Lead	ppm ASTM D5185m >100	<1	0	0
Copper	ppm ASTM D5185m >200	2	1	7
Tin	ppm ASTM D5185m >25	<1	0	<1
Vanadium	ppm ASTM D5185m	<1	0	<1
Cadmium	ppm ASTM D5185m	<1	0	0

ADDITIVES

method	limit/base	current	history1	history2
Boron	ppm ASTM D5185m	0	0	<1
Barium	ppm ASTM D5185m	0	2	0
Molybdenum	ppm ASTM D5185m	<1	0	2
Manganese	ppm ASTM D5185m	<1	<1	<1
Magnesium	ppm ASTM D5185m	1	0	5
Calcium	ppm ASTM D5185m	6	2	9
Phosphorus	ppm ASTM D5185m	143	152	125
Zinc	ppm ASTM D5185m	30	40	0
Sulfur	ppm ASTM D5185m	2181	1917	1922

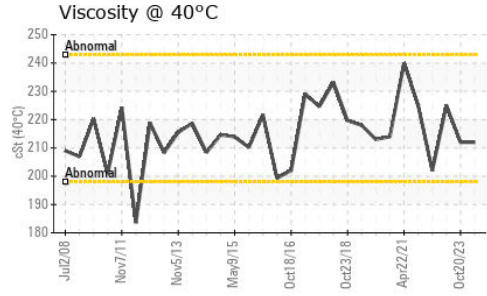
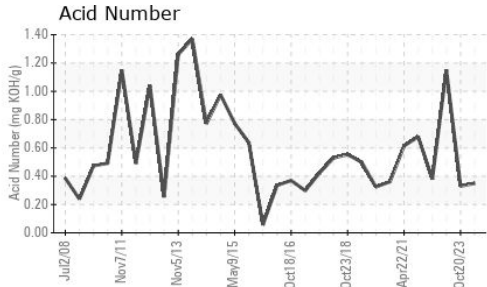
CONTAMINANTS

method	limit/base	current	history1	history2
Silicon	ppm ASTM D5185m >50	17	17	5
Sodium	ppm ASTM D5185m	6	4	2
Potassium	ppm ASTM D5185m >20	3	0	<1

FLUID DEGRADATION

method	limit/base	current	history1	history2
Acid Number (AN)	mg KOH/g ASTM D8045	0.35	0.33	▲ 1.15

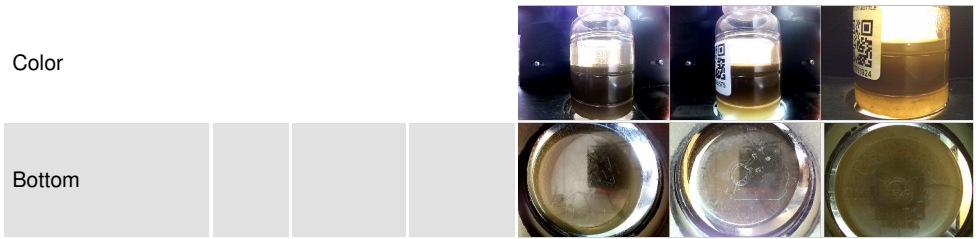
OIL ANALYSIS REPORT



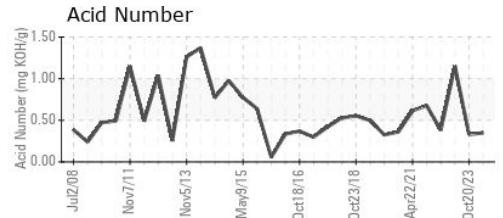
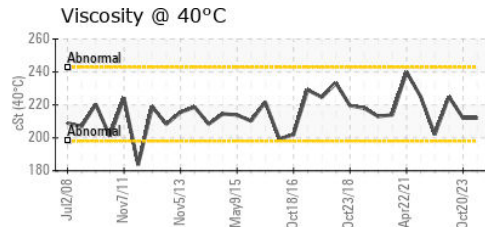
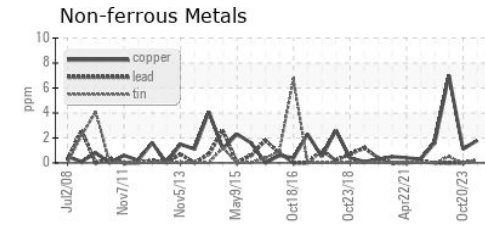
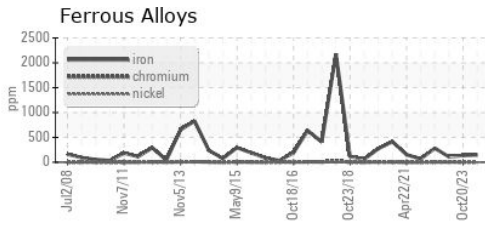
VISUAL	method	limit/base	current	history1	history2
White Metal	scalar	*Visual	NONE	NONE	NONE
Yellow Metal	scalar	*Visual	NONE	NONE	NONE
Precipitate	scalar	*Visual	NONE	NONE	NONE
Silt	scalar	*Visual	NONE	NONE	MODER
Debris	scalar	*Visual	NONE	LIGHT	NONE
Sand/Dirt	scalar	*Visual	NONE	NONE	NONE
Appearance	scalar	*Visual	NORML	NORML	MILKY
Odor	scalar	*Visual	NORML	NORML	NORML
Emulsified Water	scalar	*Visual	>0.2	NEG	0.2%
Free Water	scalar	*Visual		NEG	10.0

FLUID PROPERTIES	method	limit/base	current	history1	history2
Visc @ 40°C	cSt	ASTM D445	212	212	225

SAMPLE IMAGES	method	limit/base	current	history1	history2
---------------	--------	------------	---------	----------	----------



GRAPHS



Laboratory : WearCheck USA - 501 Madison Ave., Cary, NC 27513
Sample No. : WC0913997 **Received** : 19 Apr 2024
Lab Number : 06154564 **Tested** : 22 Apr 2024
Unique Number : 10989987 **Diagnosed** : 22 Apr 2024 - Wes Davis
Test Package : IND 2

LEPRINO FOODS - ALLENDALE
 4700 RICH STREET
 ALLENDALE, MI
 US 49401
 Contact: BILL FERRIER
 BFERRIER@LEPRINOFOODS.COM

To discuss this sample report, contact Customer Service at 1-800-237-1369.
 * - Denotes test methods that are outside of the ISO 17025 scope of accreditation.
 Statements of conformity to specifications are based on the simple acceptance decision rule (JCGM 106:2012)