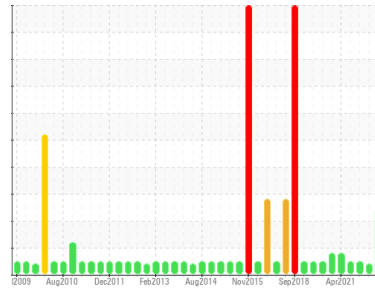




OIL ANALYSIS REPORT

Sample Rating Trend



WATER



Area

LFC-1030-WP-01-WP003 [1958137]

Machine Id

WP03HP01-1030 - CrankCase WHEY HIGH PRESSURE PUMP (S/N 38910891)

Component

Gearbox

Fluid

TEXACO RANDO HD 220 (9 GAL)

DIAGNOSIS

Recommendation

We advise that you check for the source of water entry. We recommend an early resample to monitor this condition.

Wear

All component wear rates are normal.

Contamination

Appearance is hazy. There is a moderate concentration of water present in the oil.

Fluid Condition

The AN level is acceptable for this fluid.

SAMPLE INFORMATION

	method	limit/base	current	history1	history2
Sample Number	Client Info		WC0913998	WC0737374	WC0694324
Sample Date	Client Info		16 Apr 2024	20 Oct 2022	17 Apr 2022
Machine Age	mths	Client Info	24	0	0
Oil Age	mths	Client Info	24	0	0
Oil Changed	Client Info		N/A	Not Changd	Not Changd
Sample Status			ABNORMAL	ABNORMAL	NORMAL

WEAR METALS

	method	limit/base	current	history1	history2
Iron	ppm	ASTM D5185m >200	16	2	3
Chromium	ppm	ASTM D5185m >15	<1	0	0
Nickel	ppm	ASTM D5185m >15	<1	0	0
Titanium	ppm	ASTM D5185m	<1	0	0
Silver	ppm	ASTM D5185m	<1	0	<1
Aluminum	ppm	ASTM D5185m >25	1	0	<1
Lead	ppm	ASTM D5185m >100	<1	<1	<1
Copper	ppm	ASTM D5185m >200	5	6	17
Tin	ppm	ASTM D5185m >25	2	<1	<1
Antimony	ppm	ASTM D5185m >5	---	---	---
Vanadium	ppm	ASTM D5185m	<1	0	0
Cadmium	ppm	ASTM D5185m	<1	0	0

ADDITIVES

	method	limit/base	current	history1	history2
Boron	ppm	ASTM D5185m	0	0	0
Barium	ppm	ASTM D5185m	0	2	0
Molybdenum	ppm	ASTM D5185m	0	0	0
Manganese	ppm	ASTM D5185m	0	0	0
Magnesium	ppm	ASTM D5185m	1	<1	0
Calcium	ppm	ASTM D5185m	38	44	5
Phosphorus	ppm	ASTM D5185m	339	257	232
Zinc	ppm	ASTM D5185m	386	282	95
Sulfur	ppm	ASTM D5185m	1956	2442	1667

CONTAMINANTS

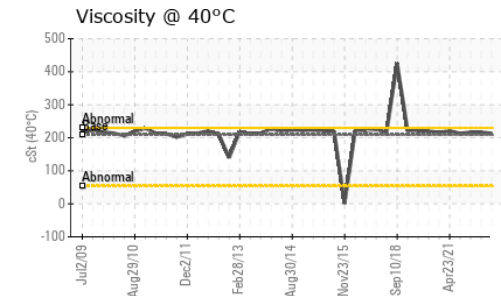
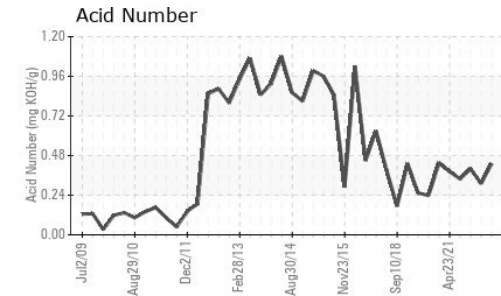
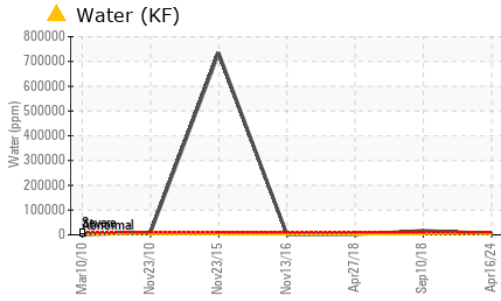
	method	limit/base	current	history1	history2
Silicon	ppm	ASTM D5185m >50	4	1	4
Sodium	ppm	ASTM D5185m	3	0	0
Potassium	ppm	ASTM D5185m >20	4	2	2
Water	%	ASTM D6304 >0.2	▲ 0.563	---	---
ppm Water	ppm	ASTM D6304 >2000	▲ 5630	---	---

FLUID DEGRADATION

	method	limit/base	current	history1	history2
Acid Number (AN)	mg KOH/g	ASTM D8045	0.43	0.31	0.40



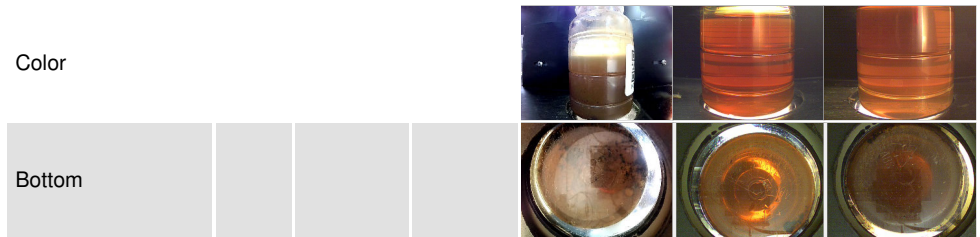
OIL ANALYSIS REPORT



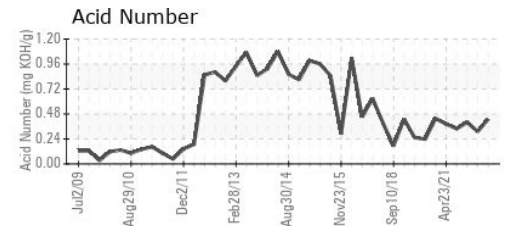
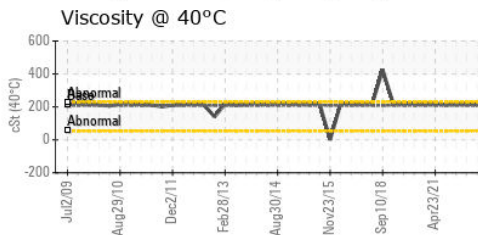
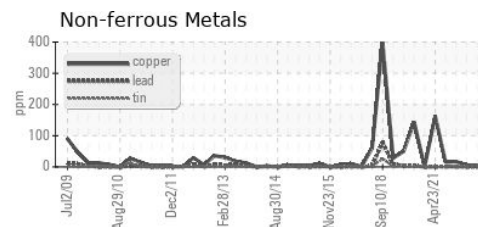
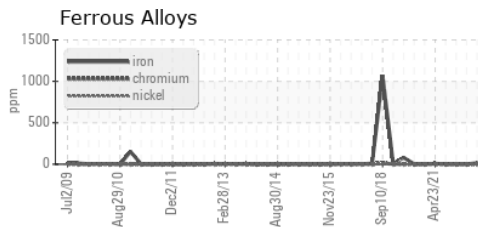
VISUAL	method	limit/base	current	history1	history2
White Metal	scalar	*Visual	NONE	NONE	NONE
Yellow Metal	scalar	*Visual	NONE	NONE	NONE
Precipitate	scalar	*Visual	NONE	NONE	NONE
Silt	scalar	*Visual	NONE	NONE	NONE
Debris	scalar	*Visual	NONE	▲ MODER	LIGHT
Sand/Dirt	scalar	*Visual	NONE	NONE	NONE
Appearance	scalar	*Visual	● HAZY	NORML	NORML
Odor	scalar	*Visual	NORML	NORML	NORML
Emulsified Water	scalar	*Visual	▲ 0.2%	NEG	NEG
Free Water	scalar	*Visual	NEG	NEG	NEG

FLUID PROPERTIES	method	limit/base	current	history1	history2
Visc @ 40°C	cSt	ASTM D445 209	213	217	217

SAMPLE IMAGES	method	limit/base	current	history1	history2
---------------	--------	------------	---------	----------	----------



GRAPHS



Certificate L2367

Laboratory : WearCheck USA - 501 Madison Ave., Cary, NC 27513
Sample No. : WC0913998 **Received** : 19 Apr 2024
Lab Number : 06154572 **Tested** : 23 Apr 2024
Unique Number : 10989995 **Diagnosed** : 23 Apr 2024 - Don Baldrige
Test Package : IND 2 (Additional Tests: KF)

LEPRINO FOODS - ALLENDALE
 4700 RICH STREET
 ALLENDALE, MI
 US 49401
 Contact: BILL FERRIER
 BFERRIER@LEPRINOFOODS.COM

To discuss this sample report, contact Customer Service at 1-800-237-1369.

* - Denotes test methods that are outside of the ISO 17025 scope of accreditation.

Statements of conformity to specifications are based on the simple acceptance decision rule (JCGM 106:2012)