



FUEL REPORT

Sample Rating Trend



NORMAL



Machine Id
KIOTI XGG700075

Component
Diesel Fuel

Fluid
No.2 DIESEL FUEL (ULTRALOW SULPHUR) (--- GAL)

DIAGNOSIS

Recommendation

No corrective action is recommended at this time. All laboratory tests indicate that this sample meets specifications for No.2 ultra-low-sulfur diesel fuel.

Corrosion

All metal levels are normal indicating no corrosion in the system.

Contaminants

There is a moderate amount of silt (particulates < 14 microns in size) present in the fuel. There is no bacteria or fungus (yeast and/or mold) indicated in the sample. The water content is negligible.

Fuel Condition

Sulfur value derived by ASTM D5453 method for ULSD validation. Sulfur value derived by ASTM D5453 method for ULSD validation.

SAMPLE INFORMATION		method	limit/base	current	history1	history2
Sample Number	Client Info			KT0001571	---	---
Sample Date	Client Info			12 Apr 2024	---	---
Machine Age	hrs	Client Info		0	---	---
Sample Status				NORMAL	---	---

PHYSICAL PROPERTIES		method	limit/base	current	history1	history2
ASTM Color	scalar	*ASTM D1500		L3.0	---	---
Visc @ 40°C	cSt	ASTM D445	3.0	2.5	---	---
Pensky-Martens Flash Point	°C	*PMCC Calculated	52	62.9	---	---

SULFUR CONTENT		method	limit/base	current	history1	history2
Sulfur	ppm	ASTM D5185m	10	0	---	---
Sulfur (UVF)	ppm	ASTM D5453		5	---	---

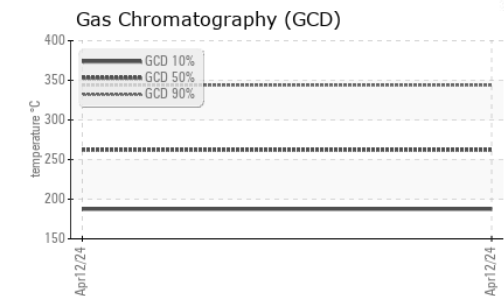
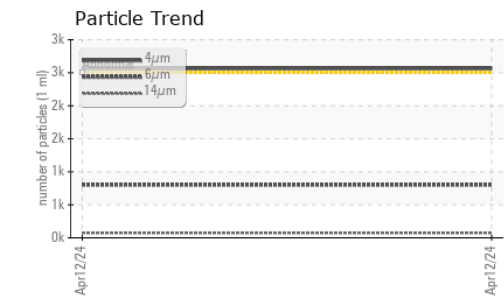
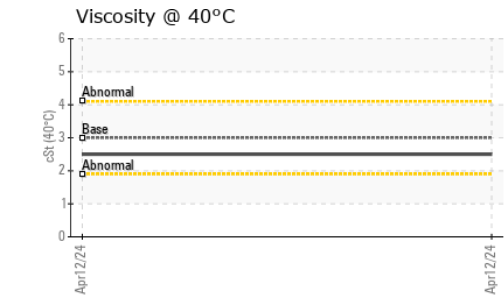
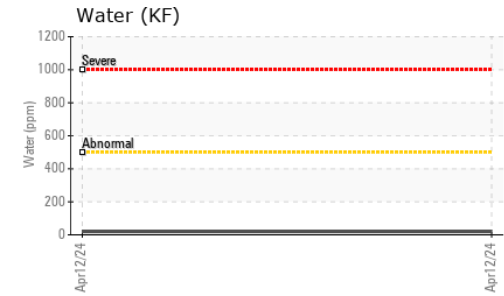
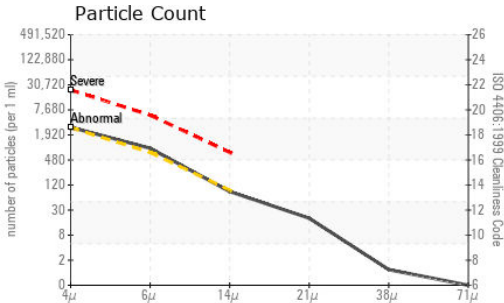
DISTILLATION		method	limit/base	current	history1	history2
Initial Boiling Point	°C	ASTM D86	165	174	---	---
5% Distillation Point	°C	ASTM D86		199	---	---
10% Distill Point	°C	ASTM D86	201	208	---	---
15% Distillation Point	°C	ASTM D86		215	---	---
20% Distill Point	°C	ASTM D86	216	222	---	---
30% Distill Point	°C	ASTM D86	230	235	---	---
40% Distill Point	°C	ASTM D86	243	247	---	---
50% Distill Point	°C	ASTM D86	255	259	---	---
60% Distill Point	°C	ASTM D86	267	273	---	---
70% Distill Point	°C	ASTM D86	280	286	---	---
80% Distill Point	°C	ASTM D86	295	302	---	---
85% Distillation Point	°C	ASTM D86		312	---	---
90% Distill Point	°C	ASTM D86	310	323	---	---
95% Distillation Point	°C	ASTM D86		340	---	---
Final Boiling Point	°C	ASTM D86	341	354	---	---

IGNITION QUALITY		method	limit/base	current	history1	history2
API Gravity		ASTM D7777	37.7	37	---	---
Cetane Index		ASTM D4737	<40.0	49	---	---

CONTAMINANTS		method	limit/base	current	history1	history2
Silicon	ppm	ASTM D5185m	<1.0	0	---	---
Sodium	ppm	ASTM D5185m	<0.1	<1	---	---
Potassium	ppm	ASTM D5185m	<0.1	0	---	---
Water	%	ASTM D6304	<0.05	0.002	---	---
ppm Water	ppm	ASTM D6304	<500	20	---	---
% Gasoline	%	*In-House	<0.50	0.0	---	---
% Biodiesel	%	*In-House	<20.0	0.0	---	---



FUEL REPORT

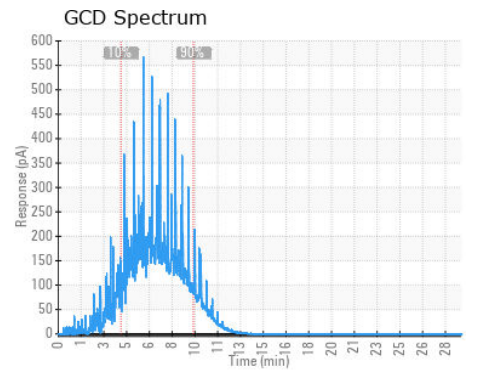
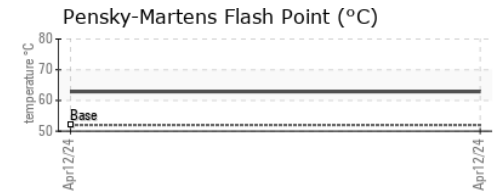
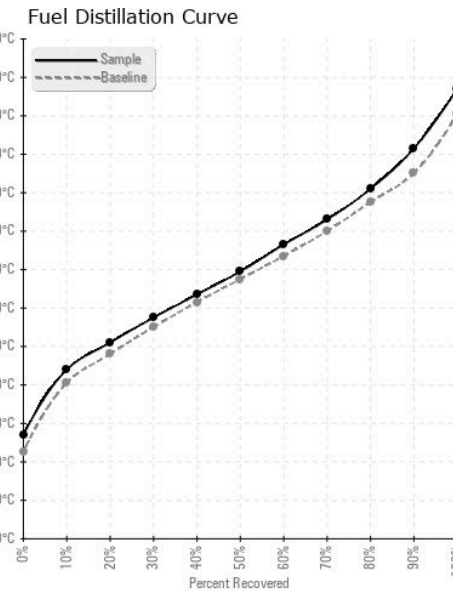


FLUID CLEANLINESS	method	limit/base	current	history1	history2
Particles >4µm	ASTM D7647	>2500	2563	---	---
Particles >6µm	ASTM D7647	>640	803	---	---
Particles >14µm	ASTM D7647	>80	74	---	---
Particles >21µm	ASTM D7647	>20	17	---	---
Particles >38µm	ASTM D7647	>4	1	---	---
Particles >71µm	ASTM D7647	>3	0	---	---
Oil Cleanliness	ISO 4406 (c)	>18/16/13	19/17/13	---	---

HEAVY METALS	method	limit/base	current	history1	history2
Aluminum	ppm	ASTM D5185m <0.1	0	---	---
Nickel	ppm	ASTM D5185m <0.1	0	---	---
Lead	ppm	ASTM D5185m <0.1	0	---	---
Vanadium	ppm	ASTM D5185m <0.1	0	---	---
Iron	ppm	ASTM D5185m <0.1	0	---	---
Calcium	ppm	ASTM D5185m <0.1	0	---	---
Magnesium	ppm	ASTM D5185m <0.1	0	---	---
Phosphorus	ppm	ASTM D5185m <0.1	2	---	---
Zinc	ppm	ASTM D5185m <0.1	0	---	---

SAMPLE IMAGES	method	limit/base	current	history1	history2
Color				no image	no image
Bottom				no image	no image

GRAPHS



Certificate L2367

Laboratory : WearCheck USA - 501 Madison Ave., Cary, NC 27513
Sample No. : KT0001571
Lab Number : 06155444
Unique Number : 10990867
Test Package : DF-2 (Additional Tests: Fuel, Screen)

Received : 19 Apr 2024
Tested : 02 May 2024
Diagnosed : 02 May 2024 - Doug Bogart

TEAM TRACTOR AND EQUIPMENT
 1100 W HAPPY VALLEY RD
 PHOENIX, AZ
 US 85085
 Contact: MARK PEREA
 service@teamtractor.com

To discuss this sample report, contact Customer Service at 1-800-237-1369.

* - Denotes test methods that are outside of the ISO 17025 scope of accreditation.

Statements of conformity to specifications are based on the simple acceptance decision rule (JCGM 106:2012)