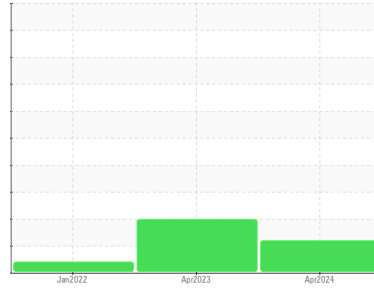




OIL ANALYSIS REPORT

Sample Rating Trend



ISO



Machine Id

PMN6734 - AG PRO

Component

Hydraulic System

Fluid

AW HYDRAULIC OIL ISO 32 (--- LTR)

DIAGNOSIS

Recommendation

We recommend you service the filters on this component. We recommend an early resample to monitor this condition. Please specify the component make and model with your next sample. Please specify the brand, type, and viscosity of the oil on your next sample.

Wear

All component wear rates are normal.

Contamination

There is a moderate amount of silt (particulates < 14 microns in size) present in the oil.

Fluid Condition

The AN level is acceptable for this fluid. The oil is still serviceable provided that the contaminant(s) can be reduced to acceptable levels.

SAMPLE INFORMATION		method	limit/base	current	history1	history2
Sample Number	Client Info			WC0911880	WC0780264	WC0554937
Sample Date	Client Info			22 Apr 2024	17 Apr 2023	24 Jan 2022
Machine Age	hrs	Client Info		0	0	0
Oil Age	hrs	Client Info		0	0	0
Oil Changed	Client Info			N/A	N/A	N/A
Sample Status				ABNORMAL	ABNORMAL	ABNORMAL

CONTAMINATION		method	limit/base	current	history1	history2
Water	WC Method		>0.1	NEG	NEG	NEG

WEAR METALS		method	limit/base	current	history1	history2
Iron	ppm	ASTM D5185m	>20	2	2	2
Chromium	ppm	ASTM D5185m	>10	<1	0	0
Nickel	ppm	ASTM D5185m	>10	<1	<1	0
Titanium	ppm	ASTM D5185m		<1	0	<1
Silver	ppm	ASTM D5185m		0	0	<1
Aluminum	ppm	ASTM D5185m	>10	2	2	1
Lead	ppm	ASTM D5185m	>10	<1	0	<1
Copper	ppm	ASTM D5185m	>75	5	4	4
Tin	ppm	ASTM D5185m	>10	<1	0	0
Antimony	ppm	ASTM D5185m		---	---	0
Vanadium	ppm	ASTM D5185m		0	0	0
Cadmium	ppm	ASTM D5185m		<1	0	0

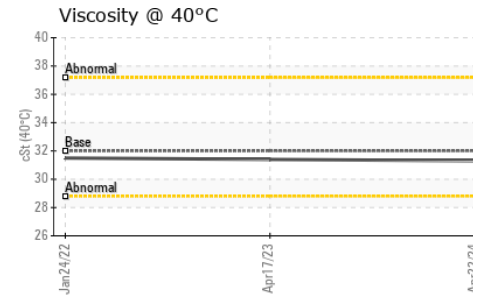
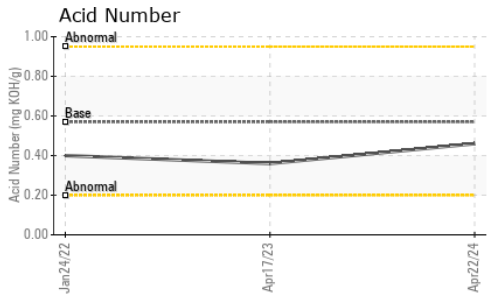
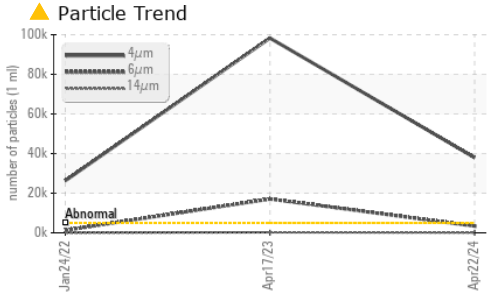
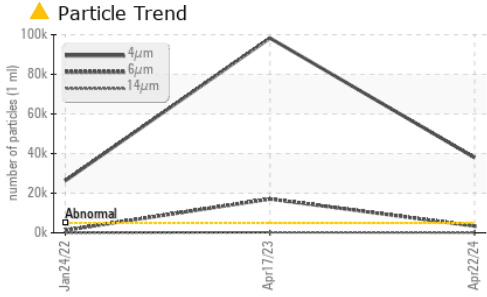
ADDITIVES		method	limit/base	current	history1	history2
Boron	ppm	ASTM D5185m	5	0	0	<1
Barium	ppm	ASTM D5185m	5	0	0	0
Molybdenum	ppm	ASTM D5185m	5	<1	<1	<1
Manganese	ppm	ASTM D5185m		0	<1	<1
Magnesium	ppm	ASTM D5185m	25	1	4	2
Calcium	ppm	ASTM D5185m	200	57	64	71
Phosphorus	ppm	ASTM D5185m	300	298	338	331
Zinc	ppm	ASTM D5185m	370	409	447	440
Sulfur	ppm	ASTM D5185m	2500	808	1072	866

CONTAMINANTS		method	limit/base	current	history1	history2
Silicon	ppm	ASTM D5185m	>20	<1	<1	<1
Sodium	ppm	ASTM D5185m		0	2	2
Potassium	ppm	ASTM D5185m	>20	1	<1	0

FLUID CLEANLINESS		method	limit/base	current	history1	history2
Particles >4µm		ASTM D7647	>5000	▲ 37978	▲ 98312	▲ 26302
Particles >6µm		ASTM D7647	>1300	▲ 3380	▲ 17085	1265
Particles >14µm		ASTM D7647	>160	101	▲ 269	15
Particles >21µm		ASTM D7647	>40	23	▲ 41	2
Particles >38µm		ASTM D7647	>10	0	0	0
Particles >71µm		ASTM D7647	>3	0	0	0
Oil Cleanliness		ISO 4406 (c)	>19/17/14	▲ 22/19/14	▲ 24/21/15	▲ 22/17/11



OIL ANALYSIS REPORT

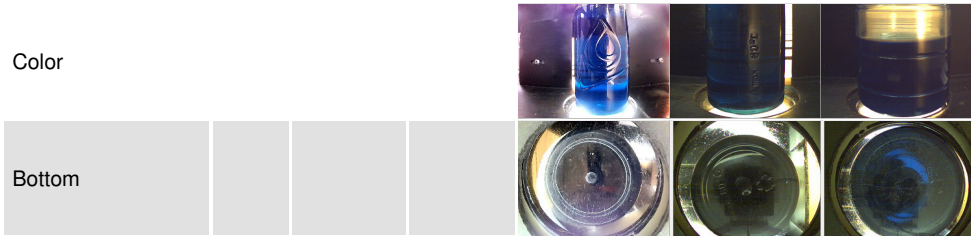


FLUID DEGRADATION		method	limit/base	current	history1	history2
Acid Number (AN)	mg KOH/g	ASTM D8045	0.57	0.46	0.36	0.40

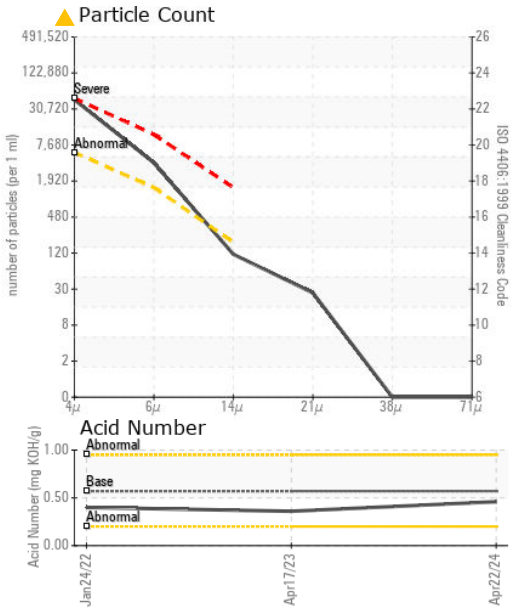
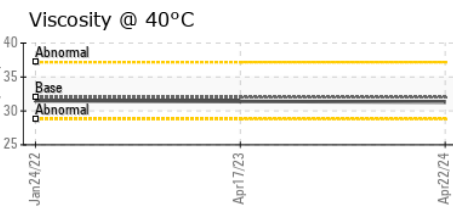
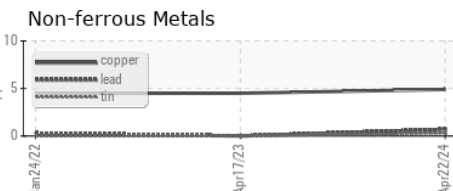
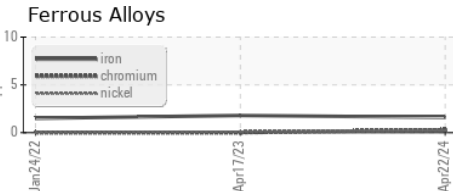
VISUAL		method	limit/base	current	history1	history2
White Metal	scalar	*Visual	NONE	NONE	NONE	NONE
Yellow Metal	scalar	*Visual	NONE	NONE	NONE	NONE
Precipitate	scalar	*Visual	NONE	NONE	NONE	NONE
Silt	scalar	*Visual	NONE	NONE	NONE	NONE
Debris	scalar	*Visual	NONE	NONE	LIGHT	NONE
Sand/Dirt	scalar	*Visual	NONE	NONE	NONE	NONE
Appearance	scalar	*Visual	NORML	NORML	NORML	NORML
Odor	scalar	*Visual	NORML	NORML	NORML	NORML
Emulsified Water	scalar	*Visual	>0.1	NEG	NEG	NEG
Free Water	scalar	*Visual		NEG	NEG	NEG

FLUID PROPERTIES		method	limit/base	current	history1	history2
Visc @ 40°C	cSt	ASTM D445	32	31.3	31.4	31.5

SAMPLE IMAGES		method	limit/base	current	history1	history2
---------------	--	--------	------------	---------	----------	----------



GRAPHS



Laboratory : WearCheck USA - 501 Madison Ave., Cary, NC 27513
Sample No. : WC0911880 **Received** : 23 Apr 2024
Lab Number : **06157570** **Tested** : 24 Apr 2024
Unique Number : 10992993 **Diagnosed** : 24 Apr 2024 - Wes Davis
Test Package : CONST

PALFINGER - BRANCH 400
 4151 W ST RT 18
 TIFFIN, OH
 US 44883
 Contact: ERIC HILL
 e.hill@palfinger.com
 T: (419)448-8156
 F:

To discuss this sample report, contact Customer Service at 1-800-237-1369.
 * - Denotes test methods that are outside of the ISO 17025 scope of accreditation.
 Statements of conformity to specifications are based on the simple acceptance decision rule (JCGM 106:2012)