



# OIL ANALYSIS REPORT

Sample Rating Trend



ISO



Machine Id  
**650916 - SFR**  
 Component  
**Power Steering Fluid**  
 Fluid  
**FUCHS TITAN CHF 11S (--- GAL)**

## DIAGNOSIS

### ▲ Recommendation

We recommend you service the filters on this component. Resample at the next service interval to monitor.

### Wear

All component wear rates are normal.

### ▲ Contamination

There is a high amount of particulates present in the power steering fluid.

### Fluid Condition

The AN level is acceptable for this fluid. The condition of the power steering fluid is suitable for further service.

SAMPLE INFORMATION		method	limit/base	current	history1	history2
Sample Number	Client Info			<b>PH0002969</b>	---	---
Sample Date	Client Info			<b>12 Apr 2024</b>	---	---
Machine Age	hrs	Client Info		<b>0</b>	---	---
Oil Age	hrs	Client Info		<b>0</b>	---	---
Oil Changed	Client Info			<b>N/A</b>	---	---
Sample Status				<b>ABNORMAL</b>	---	---

CONTAMINATION		method	limit/base	current	history1	history2
Water	WC Method			<b>NEG</b>	---	---

WEAR METALS		method	limit/base	current	history1	history2
Iron	ppm	ASTM D5185m		<b>2</b>	---	---
Chromium	ppm	ASTM D5185m		<b>&lt;1</b>	---	---
Nickel	ppm	ASTM D5185m		<b>1</b>	---	---
Titanium	ppm	ASTM D5185m		<b>&lt;1</b>	---	---
Silver	ppm	ASTM D5185m		<b>0</b>	---	---
Aluminum	ppm	ASTM D5185m		<b>12</b>	---	---
Lead	ppm	ASTM D5185m		<b>0</b>	---	---
Copper	ppm	ASTM D5185m		<b>1</b>	---	---
Tin	ppm	ASTM D5185m		<b>&lt;1</b>	---	---
Vanadium	ppm	ASTM D5185m		<b>&lt;1</b>	---	---
Cadmium	ppm	ASTM D5185m		<b>&lt;1</b>	---	---

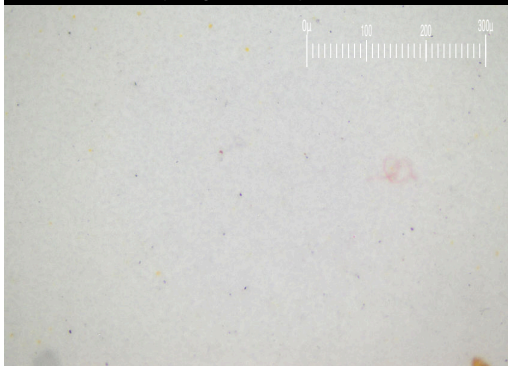
ADDITIVES		method	limit/base	current	history1	history2
Boron	ppm	ASTM D5185m		<b>169</b>	---	---
Barium	ppm	ASTM D5185m		<b>0</b>	---	---
Molybdenum	ppm	ASTM D5185m		<b>&lt;1</b>	---	---
Manganese	ppm	ASTM D5185m		<b>&lt;1</b>	---	---
Magnesium	ppm	ASTM D5185m		<b>5</b>	---	---
Calcium	ppm	ASTM D5185m		<b>24</b>	---	---
Phosphorus	ppm	ASTM D5185m		<b>405</b>	---	---
Zinc	ppm	ASTM D5185m		<b>6</b>	---	---
Sulfur	ppm	ASTM D5185m		<b>795</b>	---	---

CONTAMINANTS		method	limit/base	current	history1	history2
Silicon	ppm	ASTM D5185m		<b>8</b>	---	---
Sodium	ppm	ASTM D5185m		<b>2</b>	---	---
Potassium	ppm	ASTM D5185m	>20	<b>2</b>	---	---

FLUID CLEANLINESS		method	limit/base	current	history1	history2
Particles >4µm	ASTM D7647	>160		<b>▲ 154558</b>	---	---
Particles >6µm	ASTM D7647	>40		<b>▲ 50734</b>	---	---
Particles >14µm	ASTM D7647	>4		<b>▲ 1441</b>	---	---
Particles >21µm	ASTM D7647	>3		<b>▲ 295</b>	---	---
Particles >38µm	ASTM D7647	>3		<b>▲ 12</b>	---	---
Particles >71µm	ASTM D7647	>3		<b>1</b>	---	---
Oil Cleanliness	ISO 4406 (c)	>14/12/9		<b>▲ 24/23/18</b>	---	---

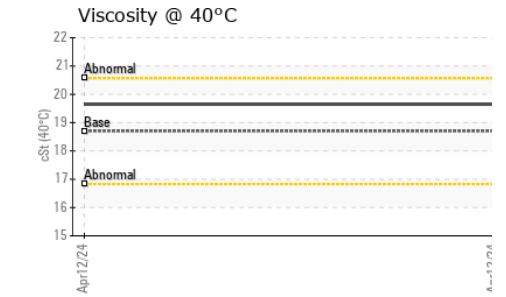
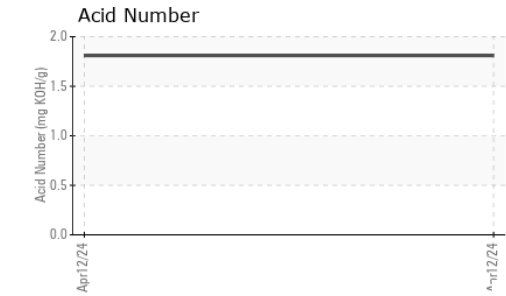
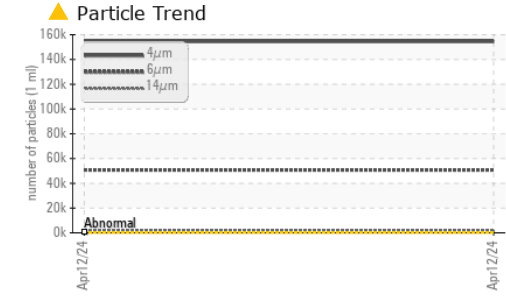
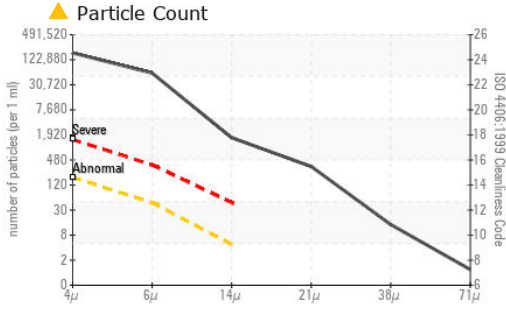
FLUID DEGRADATION		method	limit/base	current	history1	history2
Acid Number (AN)	mg KOH/g	ASTM D8045		<b>1.81</b>	---	---

Particle Filter (Magn: 200 x)





# OIL ANALYSIS REPORT



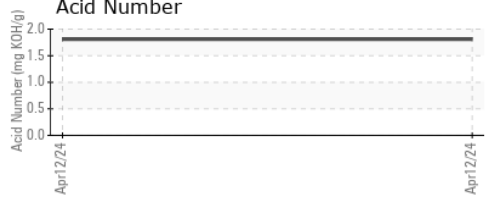
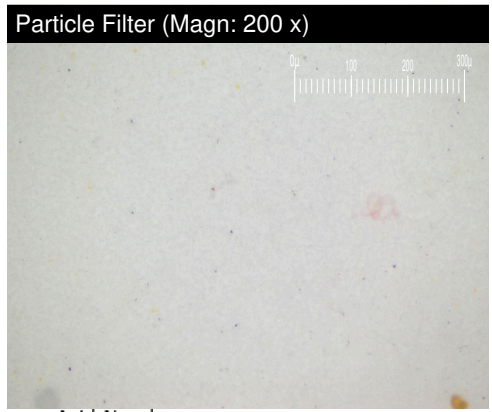
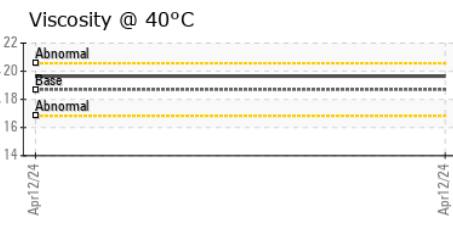
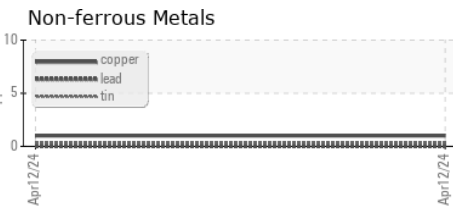
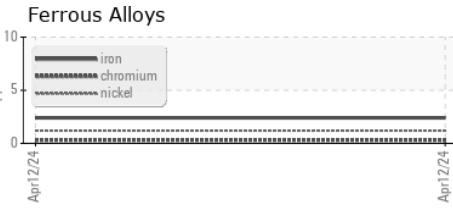
VISUAL	method	limit/base	current	history1	history2	
White Metal	scalar	*Visual	NONE	NONE	---	---
Yellow Metal	scalar	*Visual	NONE	NONE	---	---
Precipitate	scalar	*Visual	NONE	NONE	---	---
Silt	scalar	*Visual	NONE	NONE	---	---
Debris	scalar	*Visual	NONE	NONE	---	---
Sand/Dirt	scalar	*Visual	NONE	NONE	---	---
Appearance	scalar	*Visual	NORML	NORML	---	---
Odor	scalar	*Visual	NORML	NORML	---	---
Emulsified Water	scalar	*Visual	NEG	---	---	
Free Water	scalar	*Visual	NEG	---	---	

FLUID PROPERTIES	method	limit/base	current	history1	history2
Visc @ 40°C	cSt	ASTM D445 18.7	19.65	---	---

SAMPLE IMAGES	method	limit/base	current	history1	history2
---------------	--------	------------	---------	----------	----------

Color				no image	no image
Bottom				no image	no image
PrtFilter				no image	no image

## GRAPHS



**Laboratory** : WearCheck USA - 501 Madison Ave., Cary, NC 27513  
**Sample No.** : PH0002969      **Received** : 23 Apr 2024  
**Lab Number** : 06157679      **Tested** : 26 Apr 2024  
**Unique Number** : 10993102      **Diagnosed** : 29 Apr 2024 - Jonathan Hester  
**Test Package** : PLANT ( Additional Tests: PrtFilter )

**PARKER HANNIFIN**  
 5520 HWY 169 N  
 NEW HOPE, MN  
 US 55428  
 Contact: MATT DALEO  
 matthew.daleo@parker.com

To discuss this sample report, contact Customer Service at 1-800-237-1369.  
 \* - Denotes test methods that are outside of the ISO 17025 scope of accreditation.  
 Statements of conformity to specifications are based on the simple acceptance decision rule (JCGM 106:2012)