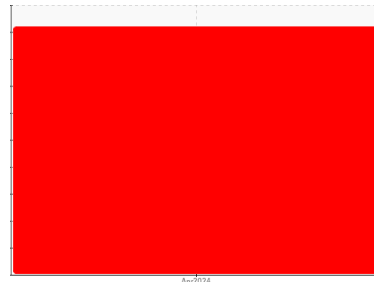




FUEL REPORT

Sample Rating Trend



WATER



Machine Id
VERIZON

Component
Diesel Fuel

Fluid
No.2 DIESEL FUEL (ULTRALOW SULPHUR) (--- GAL)

DIAGNOSIS

▲ Recommendation

We advise that you follow the water drain-off procedure for this component, and use off-line filtration to improve the cleanliness of the system fluid. We recommend an early resample to monitor this condition.

Corrosion

All metal levels are normal indicating no corrosion in the system.

▲ Contaminants

Appearance is unacceptable. Excessive free water present. There is a high concentration of water present in the fuel. Moderate concentration of visible dirt/debris present in the fuel. There is no bacteria or fungus (yeast and/or mold) present in the sample.

Fuel Condition

The fuel is no longer serviceable due to the presence of contaminants. Sulfur value derived by ASTM D5453 method for ULSD validation.

SAMPLE INFORMATION		method	limit/base	current	history1	history2
Sample Number	Client Info			WC06158217	---	---
Sample Date	Client Info			17 Apr 2024	---	---
Machine Age	hrs	Client Info		0	---	---
Sample Status				SEVERE	---	---

PHYSICAL PROPERTIES		method	limit/base	current	history1	history2
Fuel Color	text	*Visual Screen	Yellow	Pink	---	---
ASTM Color	scalar	*ASTM D1500		8.0	---	---
Visc @ 40°C	cSt	ASTM D445	3.0	2.57	---	---
Pensky-Martens Flash Point	°C	*PMCC Calculated	52	61.8	---	---

SULFUR CONTENT		method	limit/base	current	history1	history2
Sulfur	ppm	ASTM D5185m	10	579	---	---
Sulfur (UVF)	ppm	ASTM D5453		578	---	---

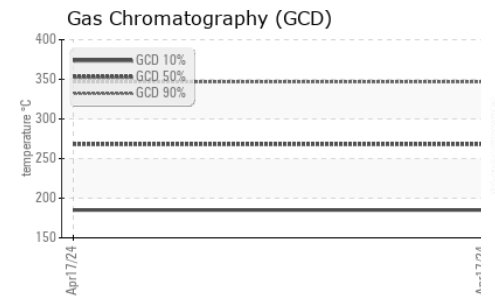
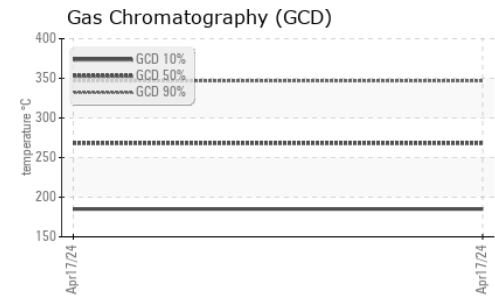
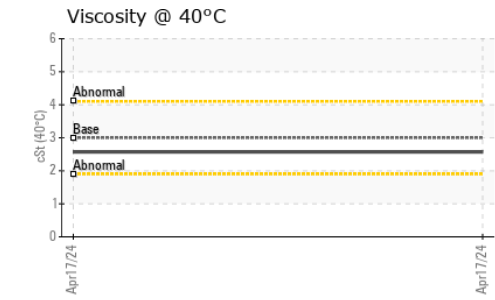
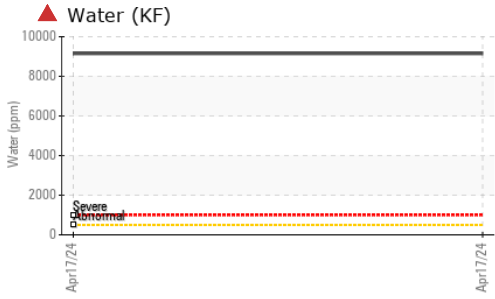
DISTILLATION		method	limit/base	current	history1	history2
Initial Boiling Point	°C	ASTM D86	165	173	---	---
5% Distillation Point	°C	ASTM D86		197	---	---
10% Distill Point	°C	ASTM D86	201	207	---	---
15% Distillation Point	°C	ASTM D86		215	---	---
20% Distill Point	°C	ASTM D86	216	223	---	---
30% Distill Point	°C	ASTM D86	230	238	---	---
40% Distill Point	°C	ASTM D86	243	251	---	---
50% Distill Point	°C	ASTM D86	255	265	---	---
60% Distill Point	°C	ASTM D86	267	278	---	---
70% Distill Point	°C	ASTM D86	280	291	---	---
80% Distill Point	°C	ASTM D86	295	305	---	---
85% Distillation Point	°C	ASTM D86		315	---	---
90% Distill Point	°C	ASTM D86	310	325	---	---
95% Distillation Point	°C	ASTM D86		342	---	---
Final Boiling Point	°C	ASTM D86	341	356	---	---

IGNITION QUALITY		method	limit/base	current	history1	history2
API Gravity		ASTM D7777	37.7	77	---	---
Cetane Index		ASTM D4737	<40.0	113	---	---

CONTAMINANTS		method	limit/base	current	history1	history2
Silicon	ppm	ASTM D5185m	<1.0	0	---	---
Sodium	ppm	ASTM D5185m	<0.1	<1	---	---
Potassium	ppm	ASTM D5185m	<0.1	0	---	---
Water	%	ASTM D6304	<0.05	▲ 0.915	---	---
ppm Water	ppm	ASTM D6304	<500	▲ 9153	---	---
% Gasoline	%	*In-House	<0.50	0.0	---	---
% Biodiesel	%	*In-House	<20.0	0.0	---	---

MICROBIAL		method	limit/base	current	history1	history2
Bacteria	CFU/ml	WC-Method	>=100000	0	---	---
Yeast	CFU/ml	WC-Method	>=100000	0	---	---
Mold	Colonies	WC-Method	MODER	---	---	---

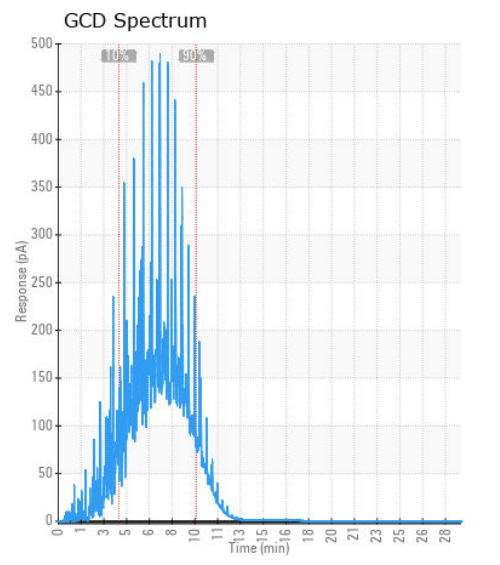
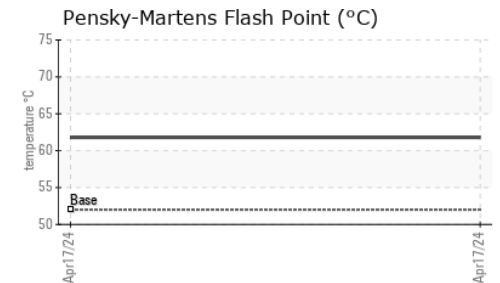
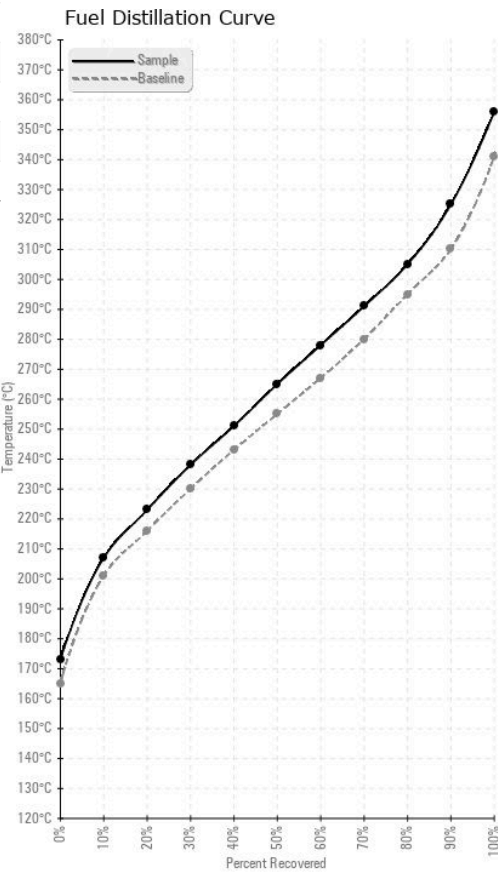
FUEL REPORT



HEAVY METALS		method	limit/base	current	history1	history2
Aluminum	ppm	ASTM D5185m	<0.1	0	---	---
Nickel	ppm	ASTM D5185m	<0.1	0	---	---
Lead	ppm	ASTM D5185m	<0.1	0	---	---
Vanadium	ppm	ASTM D5185m	<0.1	0	---	---
Iron	ppm	ASTM D5185m	<0.1	0	---	---
Calcium	ppm	ASTM D5185m	<0.1	0	---	---
Magnesium	ppm	ASTM D5185m	<0.1	0	---	---
Phosphorus	ppm	ASTM D5185m	<0.1	0	---	---
Zinc	ppm	ASTM D5185m	<0.1	1	---	---

SAMPLE IMAGES		method	limit/base	current	history1	history2
Color				no image	no image	
Bottom				no image	no image	

GRAPHS



Laboratory : WearCheck USA - 501 Madison Ave., Cary, NC 27513
Sample No. : WC06158217 **Received** : 23 Apr 2024
Lab Number : 06158217 **Tested** : 06 May 2024
Unique Number : 10993640 **Diagnosed** : 06 May 2024 - Doug Bogart
Test Package : DF-2 (Additional Tests: Bacteria, Fuel, Screen)

COUCH OIL COMPANY
 2907 HILLSBOROUGH RD
 DURHAM, NC
 US 27705
 Contact: JESSE BROWN
 jesse@couchoilcompany.com
 T: (919)285-5408
 F:

To discuss this sample report, contact Customer Service at 1-800-237-1369.
 * - Denotes test methods that are outside of the ISO 17025 scope of accreditation.
 Statements of conformity to specifications are based on the simple acceptance decision rule (JCGM 106:2012)