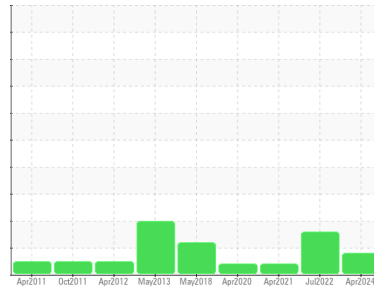




# OIL ANALYSIS REPORT

Sample Rating Trend



ISO



Machine Id  
**KAESER SFC 22 3783627 (S/N 1106)**  
 Component  
**Compressor**  
 Fluid  
**KAESER SIGMA (OEM) S-460 (--- QTS)**

## DIAGNOSIS

### Recommendation

Oil and filter change at the time of sampling has been noted. Resample at the next service interval to monitor.

### Wear

All component wear rates are normal.

### Contamination

There is a high amount of particulates present in the oil.

### Fluid Condition

The AN level is acceptable for this fluid. The condition of the oil is suitable for further service.

## SAMPLE INFORMATION

	method	limit/base	current	history1	history2
Sample Number	Client Info		<b>KCPA016062</b>	KCP50790	KCP37477
Sample Date	Client Info		<b>19 Apr 2024</b>	14 Jul 2022	06 Apr 2021
Machine Age	hrs	Client Info	<b>110106</b>	103573	92645
Oil Age	hrs	Client Info	<b>4000</b>	11000	3000
Oil Changed	Client Info		<b>Changed</b>	Changed	Changed
Sample Status			<b>ABNORMAL</b>	ABNORMAL	ABNORMAL

## WEAR METALS

	method	limit/base	current	history1	history2
Iron	ppm	ASTM D5185m >50	<1	0	0
Chromium	ppm	ASTM D5185m >10	<1	0	0
Nickel	ppm	ASTM D5185m >3	<1	0	0
Titanium	ppm	ASTM D5185m >3	<1	0	0
Silver	ppm	ASTM D5185m >2	0	<1	0
Aluminum	ppm	ASTM D5185m >10	2	<1	0
Lead	ppm	ASTM D5185m >10	<1	0	<1
Copper	ppm	ASTM D5185m >50	10	6	7
Tin	ppm	ASTM D5185m >10	<1	0	0
Antimony	ppm	ASTM D5185m	---	---	0
Vanadium	ppm	ASTM D5185m	<1	0	0
Cadmium	ppm	ASTM D5185m	<1	0	0

## ADDITIVES

	method	limit/base	current	history1	history2
Boron	ppm	ASTM D5185m	0	0	<1
Barium	ppm	ASTM D5185m 90	<1	0	0
Molybdenum	ppm	ASTM D5185m	<1	0	0
Manganese	ppm	ASTM D5185m	<1	0	0
Magnesium	ppm	ASTM D5185m 90	1	2	1
Calcium	ppm	ASTM D5185m 2	3	0	0
Phosphorus	ppm	ASTM D5185m	2	3	2
Zinc	ppm	ASTM D5185m	<1	0	0
Sulfur	ppm	ASTM D5185m	<b>21348</b>	17046	11119

## CONTAMINANTS

	method	limit/base	current	history1	history2
Silicon	ppm	ASTM D5185m >25	1	<1	0
Sodium	ppm	ASTM D5185m	<1	0	<1
Potassium	ppm	ASTM D5185m >20	<1	<1	0
Water	%	ASTM D6304 >0.05	<b>0.005</b>	0.015	0.01
ppm Water	ppm	ASTM D6304 >500	<b>55</b>	154.1	100.0

## FLUID CLEANLINESS

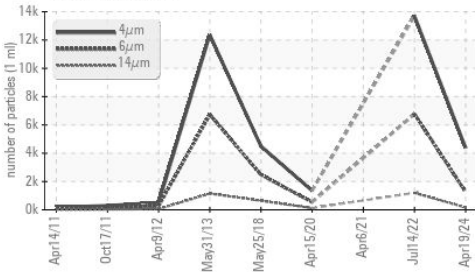
	method	limit/base	current	history1	history2
Particles >4µm	ASTM D7647		<b>4377</b>	13706	---
Particles >6µm	ASTM D7647 >1300		<b>1265</b>	▲ 6769	---
Particles >14µm	ASTM D7647 >80		▲ <b>161</b>	▲ 1192	---
Particles >21µm	ASTM D7647 >20		<b>14</b>	▲ 126	---
Particles >38µm	ASTM D7647 >4		<b>0</b>	1	---
Particles >71µm	ASTM D7647 >3		<b>0</b>	0	---
Oil Cleanliness	ISO 4406 (c)	>--/17/13	▲ <b>19/17/15</b>	▲ 21/20/17	---

## FLUID DEGRADATION

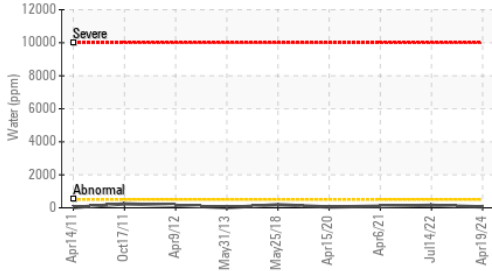
	method	limit/base	current	history1	history2
Acid Number (AN)	mg KOH/g	ASTM D8045 0.4	<b>0.43</b>	0.44	0.394

# OIL ANALYSIS REPORT

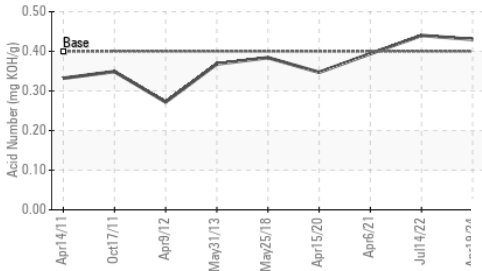
### ▲ Particle Trend



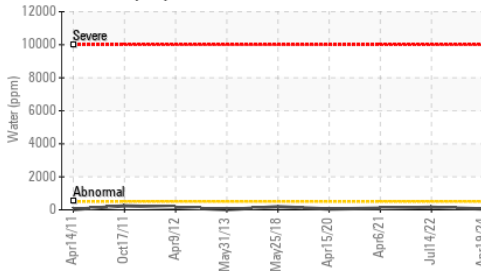
### Water (KF)



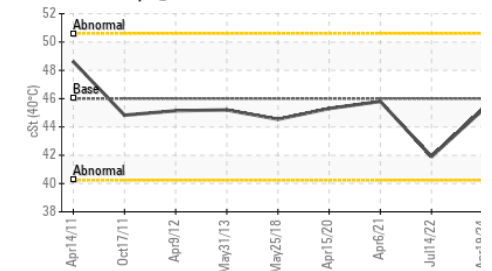
### Acid Number



### Water (KF)



### Viscosity @ 40°C

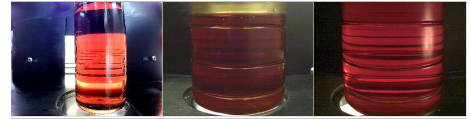


VISUAL	method	limit/base	current	history1	history2
White Metal	scalar	*Visual	NONE	NONE	VLITE
Yellow Metal	scalar	*Visual	NONE	NONE	NONE
Precipitate	scalar	*Visual	NONE	NONE	NONE
Silt	scalar	*Visual	NONE	NONE	NONE
Debris	scalar	*Visual	NONE	NONE	NONE
Sand/Dirt	scalar	*Visual	NONE	NONE	NONE
Appearance	scalar	*Visual	NORML	NORML	NORML
Odor	scalar	*Visual	NORML	NORML	NORML
Emulsified Water	scalar	*Visual	>0.05	NEG	NEG
Free Water	scalar	*Visual		NEG	NEG

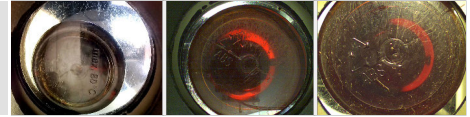
FLUID PROPERTIES	method	limit/base	current	history1	history2
Visc @ 40°C	cSt	ASTM D445	46	45.2	41.9

SAMPLE IMAGES	method	limit/base	current	history1	history2
---------------	--------	------------	---------	----------	----------

Color

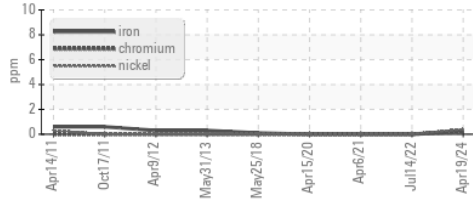


Bottom

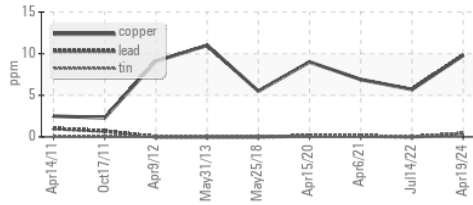


### GRAPHS

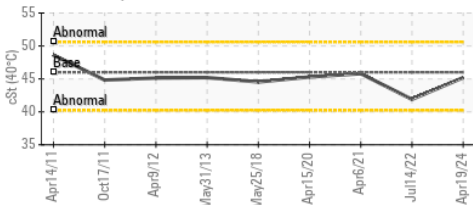
#### Ferrous Alloys



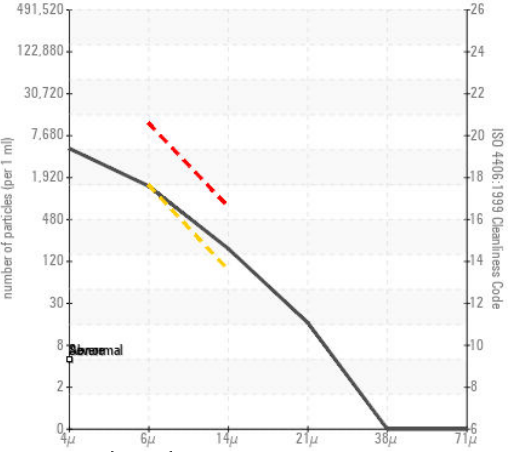
#### Non-ferrous Metals



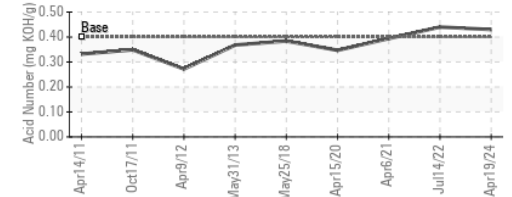
#### Viscosity @ 40°C



#### ▲ Particle Count



#### Acid Number



Certificate L2367

**Laboratory** : WearCheck USA - 501 Madison Ave., Cary, NC 27513  
**Sample No.** : KCPA016062 **Received** : 23 Apr 2024  
**Lab Number** : 06158476 **Tested** : 25 Apr 2024  
**Unique Number** : 10993899 **Diagnosed** : 25 Apr 2024 - Angela Borella  
**Test Package** : IND 2 ( Additional Tests: KF, PrtCount )

#### INDEPENDENT PRINTING

1801 LAWRENCE DR  
 DE PERE, WI  
 US 54115  
 Contact: SERVICE MANAGER

To discuss this sample report, contact Customer Service at 1-800-237-1369.

\* - Denotes test methods that are outside of the ISO 17025 scope of accreditation.

Statements of conformity to specifications are based on the simple acceptance decision rule (JCGM 106:2012)

T:  
F: