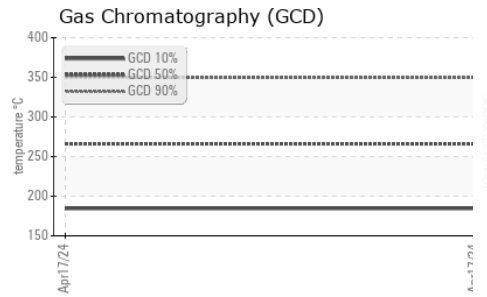
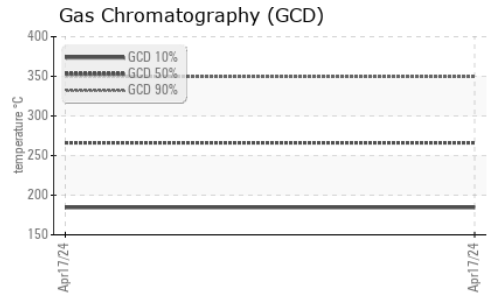
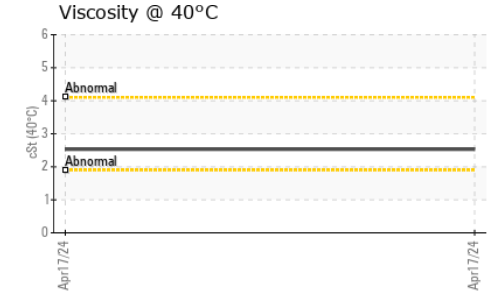
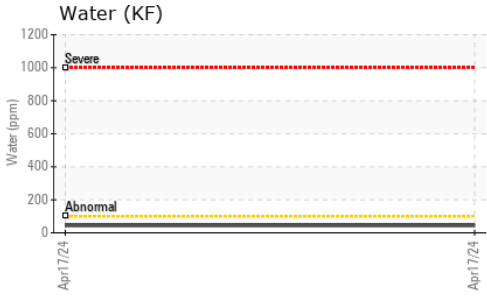



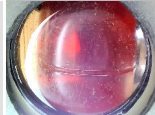




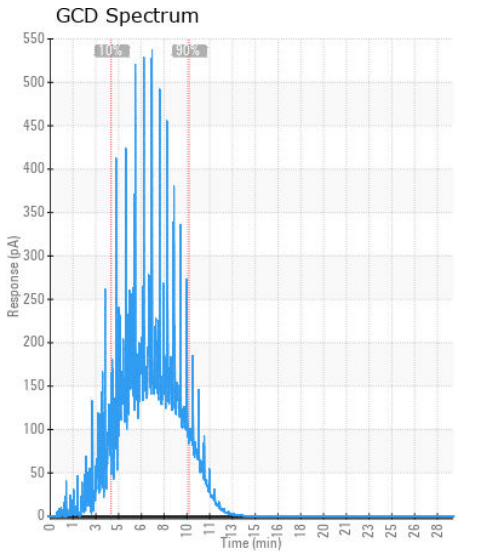
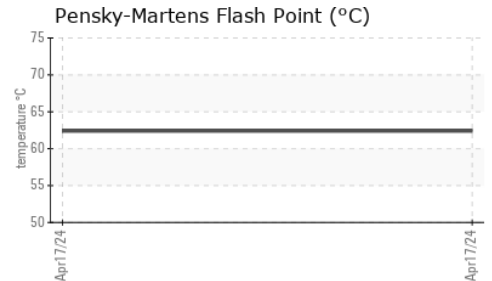
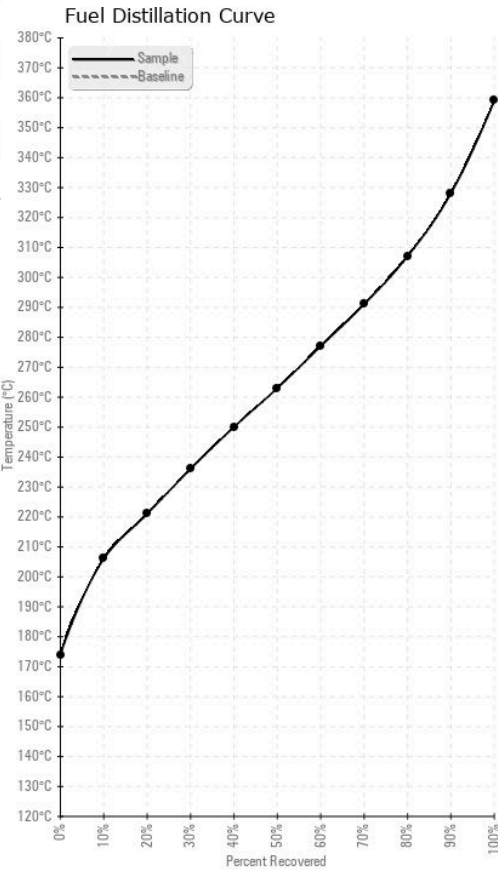
# FUEL REPORT



HEAVY METALS	method	limit/base	current	history1	history2	
Aluminum	ppm	ASTM D5185m	<0.1	0	---	---
Nickel	ppm	ASTM D5185m	<0.1	0	---	---
Lead	ppm	ASTM D5185m	<0.1	0	---	---
Vanadium	ppm	ASTM D5185m	<0.1	0	---	---
Iron	ppm	ASTM D5185m	<0.1	0	---	---
Calcium	ppm	ASTM D5185m	<0.1	0	---	---
Magnesium	ppm	ASTM D5185m	<0.1	0	---	---
Phosphorus	ppm	ASTM D5185m	<0.1	0	---	---
Zinc	ppm	ASTM D5185m	<0.1	0	---	---

SAMPLE IMAGES	method	limit/base	current	history1	history2
Color				no image	no image
Bottom				no image	no image

## GRAPHS



**Laboratory** : WearCheck USA - 501 Madison Ave., Cary, NC 27513  
**Sample No.** : WCDF4597      **Received** : 24 Apr 2024  
**Lab Number** : 06159568      **Tested** : 06 May 2024  
**Unique Number** : 10994991      **Diagnosed** : 06 May 2024 - Doug Bogart  
**Test Package** : DF-2 ( Additional Tests: CldPt, Fuel, PrtCount, Screen )

**TANK WIZARDS**  
 1511 MASTERS RD NW  
 PALM BAY, FL  
 US 32907  
 Contact: WENDALL STRODERD  
 wendall@tankwizards.com  
 T: (321)427-5149  
 F: (321)574-4131

To discuss this sample report, contact Customer Service at 1-800-237-1369.

\* - Denotes test methods that are outside of the ISO 17025 scope of accreditation.

Statements of conformity to specifications are based on the simple acceptance decision rule (JCGM 106:2012)