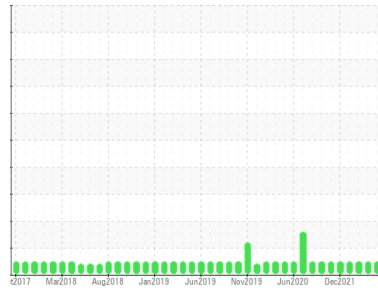




# OIL ANALYSIS REPORT

Sample Rating Trend



**NORMAL**



Machine Id  
**BOBSP 7353**

Component  
**Gearbox**

Fluid  
**MOBIL MOBILGEAR 600 XP ISO 150 (--- GAL)**

## DIAGNOSIS

### Recommendation

Resample at the next service interval to monitor.

### Wear

All component wear rates are normal.

### Contamination

The system cleanliness is acceptable for your target ISO 4406 cleanliness code. The system and fluid cleanliness is acceptable.

### Fluid Condition

The AN level is acceptable for this fluid. The condition of the oil is suitable for further service.

SAMPLE INFORMATION		method	limit/base	current	history1	history2
Sample Number	Client Info			<b>PTK0001427</b>	PTK0000394	PTK0000354
Sample Date	Client Info			<b>19 Apr 2024</b>	09 Nov 2023	13 Jun 2023
Machine Age	mths	Client Info		<b>0</b>	0	0
Oil Age	mths	Client Info		<b>0</b>	0	0
Oil Changed	Client Info			<b>N/A</b>	N/A	N/A
Sample Status				<b>NORMAL</b>	NORMAL	NORMAL

CONTAMINATION		method	limit/base	current	history1	history2
Water	WC Method		>0.2	<b>NEG</b>	NEG	NEG

WEAR METALS		method	limit/base	current	history1	history2
Iron	ppm	ASTM D5185m	>200	<b>&lt;1</b>	3	4
Chromium	ppm	ASTM D5185m	>10	<b>&lt;1</b>	0	0
Nickel	ppm	ASTM D5185m	>10	<b>1</b>	0	0
Titanium	ppm	ASTM D5185m		<b>&lt;1</b>	0	0
Silver	ppm	ASTM D5185m		<b>&lt;1</b>	0	0
Aluminum	ppm	ASTM D5185m	>25	<b>2</b>	0	0
Lead	ppm	ASTM D5185m	>50	<b>1</b>	0	<1
Copper	ppm	ASTM D5185m	>200	<b>2</b>	3	2
Tin	ppm	ASTM D5185m	>10	<b>1</b>	0	0
Vanadium	ppm	ASTM D5185m		<b>&lt;1</b>	0	0
Cadmium	ppm	ASTM D5185m		<b>&lt;1</b>	0	0

ADDITIVES		method	limit/base	current	history1	history2
Boron	ppm	ASTM D5185m		<b>1</b>	0	0
Barium	ppm	ASTM D5185m		<b>&lt;1</b>	0	2
Molybdenum	ppm	ASTM D5185m		<b>1</b>	0	0
Manganese	ppm	ASTM D5185m		<b>&lt;1</b>	0	0
Magnesium	ppm	ASTM D5185m		<b>1</b>	0	<1
Calcium	ppm	ASTM D5185m		<b>6</b>	2	2
Phosphorus	ppm	ASTM D5185m		<b>333</b>	282	283
Zinc	ppm	ASTM D5185m		<b>4</b>	8	6
Sulfur	ppm	ASTM D5185m		<b>17714</b>	13228	14208

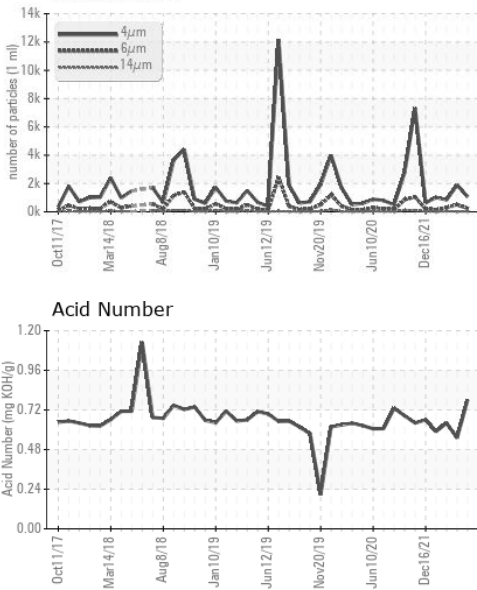
CONTAMINANTS		method	limit/base	current	history1	history2
Silicon	ppm	ASTM D5185m	>50	<b>2</b>	<1	<1
Sodium	ppm	ASTM D5185m		<b>0</b>	<1	0
Potassium	ppm	ASTM D5185m	>20	<b>2</b>	0	1

FLUID CLEANLINESS		method	limit/base	current	history1	history2
Particles >4µm		ASTM D7647		<b>1065</b>	1884	846
Particles >6µm		ASTM D7647	>2500	<b>242</b>	504	289
Particles >14µm		ASTM D7647	>320	<b>25</b>	23	42
Particles >21µm		ASTM D7647	>80	<b>7</b>	6	16
Particles >38µm		ASTM D7647	>20	<b>1</b>	0	1
Particles >71µm		ASTM D7647	>4	<b>0</b>	0	0
Oil Cleanliness		ISO 4406 (c)	>18/15	<b>15/12</b>	16/12	15/13

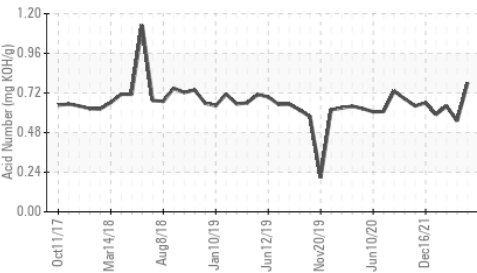
FLUID DEGRADATION		method	limit/base	current	history1	history2
Acid Number (AN)	mg KOH/g	ASTM D8045		<b>0.78</b>	0.55	0.64

# OIL ANALYSIS REPORT

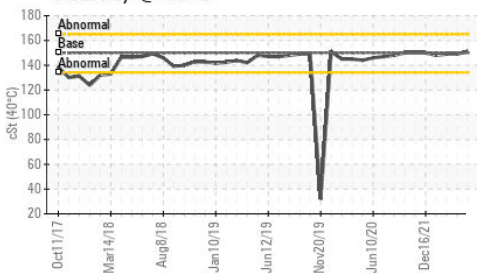
**Particle Trend**



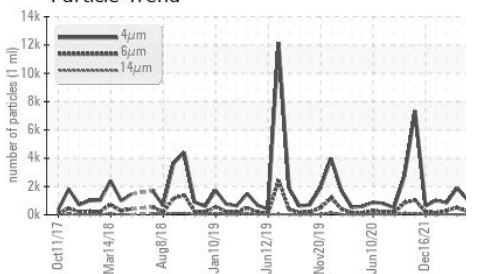
**Acid Number**



**Viscosity @ 40°C**



**Particle Trend**

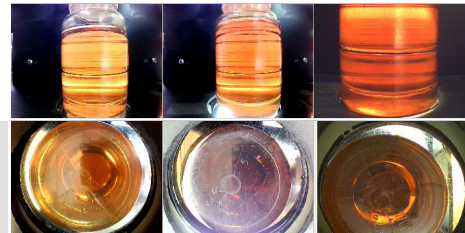
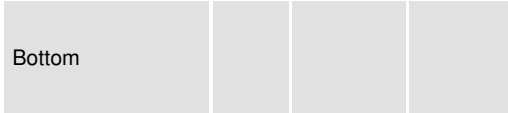


VISUAL	method	limit/base	current	history1	history2
White Metal	scalar	*Visual	NONE	NONE	NONE
Yellow Metal	scalar	*Visual	NONE	NONE	NONE
Precipitate	scalar	*Visual	NONE	NONE	NONE
Silt	scalar	*Visual	NONE	NONE	NONE
Debris	scalar	*Visual	NONE	NONE	NONE
Sand/Dirt	scalar	*Visual	NONE	NONE	NONE
Appearance	scalar	*Visual	NORML	NORML	NORML
Odor	scalar	*Visual	NORML	NORML	NORML
Emulsified Water	scalar	*Visual	>0.2	NEG	NEG
Free Water	scalar	*Visual		NEG	NEG

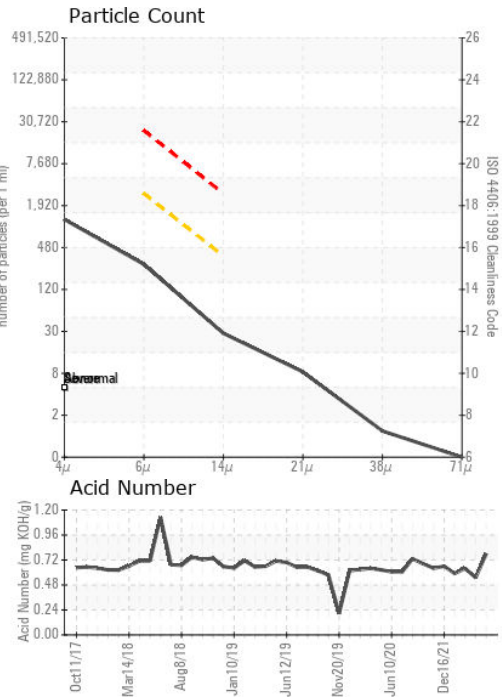
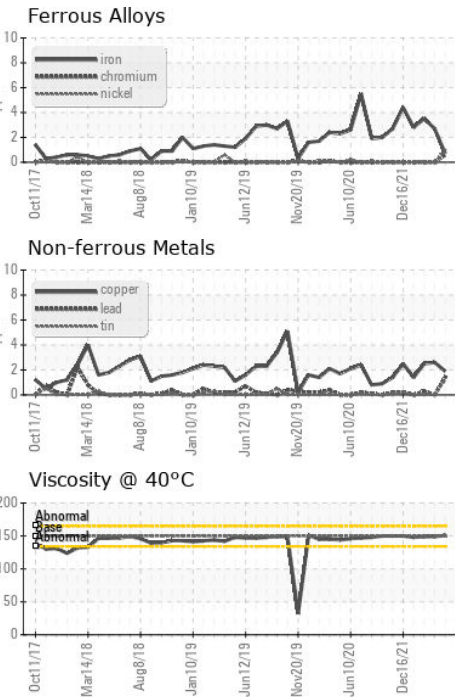
FLUID PROPERTIES	method	limit/base	current	history1	history2
Visc @ 40°C	cSt	ASTM D445	150	149	149

SAMPLE IMAGES	method	limit/base	current	history1	history2
---------------	--------	------------	---------	----------	----------

**Color**



## GRAPHS



**Laboratory** : WearCheck USA - 501 Madison Ave., Cary, NC 27513  
**Sample No.** : PTK0001427      **Received** : 24 Apr 2024  
**Lab Number** : 06159784      **Tested** : 25 Apr 2024  
**Unique Number** : 10995207      **Diagnosed** : 25 Apr 2024 - Wes Davis  
**Test Package** : MOB 2 ( Additional Tests: PrtCount )

**GRAPHIC PACKAGING**  
 1500 NICHOLAS BLVD  
 ELK GROVE, IL  
 US 60017  
 Contact: TONY HILDY  
 anthonyhildy@graphicpkg.com  
 T: (847)437-1700  
 F:

To discuss this sample report, contact Customer Service at 1-800-237-1369.  
 \* - Denotes test methods that are outside of the ISO 17025 scope of accreditation.  
 Statements of conformity to specifications are based on the simple acceptance decision rule (JCGM 106:2012)