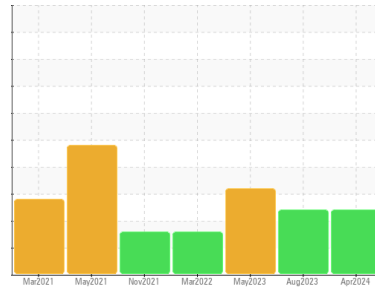




OIL ANALYSIS REPORT

Sample Rating Trend



Machine Id
MHTF_4B MHTF_4B_P4
 Component
Drive End Pump
 Fluid
ROYAL PURPLE SYNFILM GT 32 (--- GAL)

DIAGNOSIS

Recommendation
 No corrective action is recommended at this time. We recommend an early resample to monitor this condition.

Wear
 Bearing and/or bushing wear is indicated.

Contamination
 There is no indication of any contamination in the oil.

Fluid Condition
 The AN level is acceptable for this fluid. The condition of the oil is suitable for further service.

SAMPLE INFORMATION

	method	limit/base	current	history1	history2
Sample Number	Client Info		RP0037596	RP0033064	RP0027452
Sample Date	Client Info		22 Apr 2024	23 Aug 2023	10 May 2023
Machine Age	hrs	Client Info	0	0	0
Oil Age	hrs	Client Info	0	0	0
Oil Changed	Client Info		N/A	N/A	N/A
Sample Status			ABNORMAL	ABNORMAL	ABNORMAL

WEAR METALS

	method	limit/base	current	history1	history2
Iron	ppm	ASTM D5185m >90	9	8	5
Chromium	ppm	ASTM D5185m >5	<1	0	<1
Nickel	ppm	ASTM D5185m >5	4	2	2
Titanium	ppm	ASTM D5185m >3	<1	0	<1
Silver	ppm	ASTM D5185m >3	<1	<1	0
Aluminum	ppm	ASTM D5185m >7	2	0	<1
Lead	ppm	ASTM D5185m >12	▲ 23	▲ 16	7
Copper	ppm	ASTM D5185m >30	▲ 148	▲ 86	▲ 50
Tin	ppm	ASTM D5185m >9	▲ 13	▲ 11	▲ 11
Vanadium	ppm	ASTM D5185m	<1	0	<1
Cadmium	ppm	ASTM D5185m	1	<1	<1

ADDITIVES

	method	limit/base	current	history1	history2
Boron	ppm	ASTM D5185m	0	0	0
Barium	ppm	ASTM D5185m	<1	1	0
Molybdenum	ppm	ASTM D5185m	1	0	0
Manganese	ppm	ASTM D5185m	2	1	<1
Magnesium	ppm	ASTM D5185m	18	31	72
Calcium	ppm	ASTM D5185m	3	0	0
Phosphorus	ppm	ASTM D5185m	2	6	0
Zinc	ppm	ASTM D5185m	74	79	54

CONTAMINANTS

	method	limit/base	current	history1	history2
Silicon	ppm	ASTM D5185m >60	6	4	4
Sodium	ppm	ASTM D5185m	<1	0	4
Potassium	ppm	ASTM D5185m >20	1	<1	4
Water	%	ASTM D6304 >.1	0.020	0.007	0.013
ppm Water	ppm	ASTM D6304 >1000	201	79.3	132.9

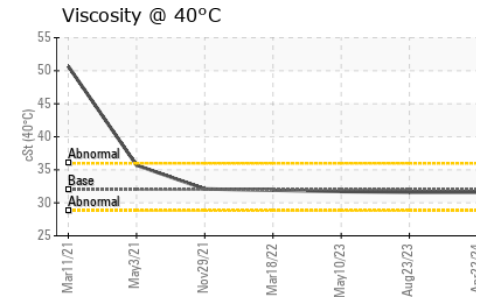
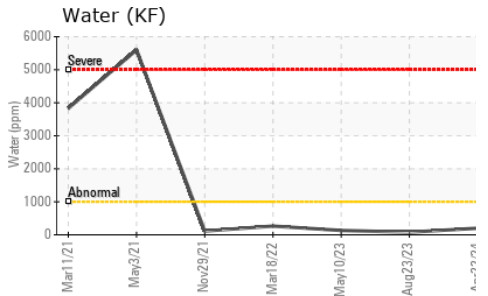
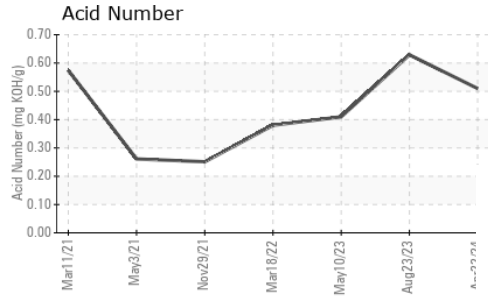
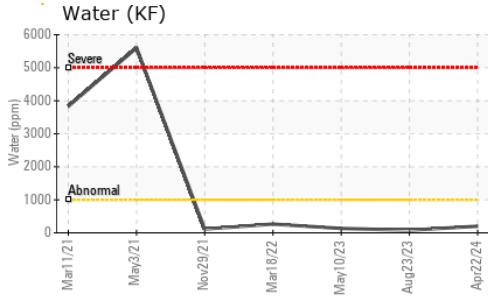
FLUID DEGRADATION

	method	limit/base	current	history1	history2
Acid Number (AN)	mg KOH/g	ASTM D8045	0.51	0.629	0.41

VISUAL

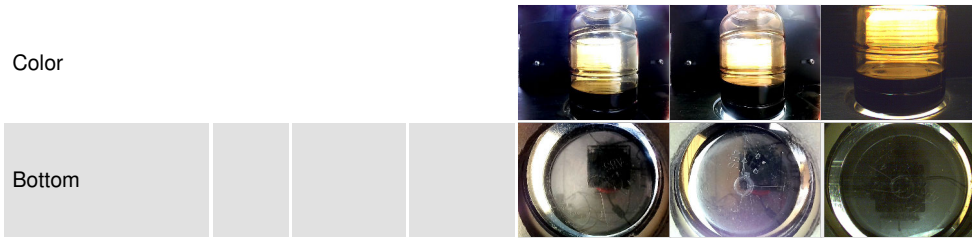
	method	limit/base	current	history1	history2
White Metal	scalar	*Visual NONE	NONE	NONE	▲ MODER
Yellow Metal	scalar	*Visual NONE	NONE	NONE	NONE
Precipitate	scalar	*Visual NONE	NONE	NONE	NONE
Silt	scalar	*Visual NONE	NONE	NONE	NONE
Debris	scalar	*Visual NONE	LIGHT	LIGHT	▲ MODER
Sand/Dirt	scalar	*Visual NONE	NONE	NONE	NONE
Appearance	scalar	*Visual NORML	NORML	NORML	NORML
Odor	scalar	*Visual NORML	NORML	NORML	NORML
Emulsified Water	scalar	*Visual >.1	NEG	NEG	NEG
Free Water	scalar	*Visual	NEG	NEG	NEG

OIL ANALYSIS REPORT

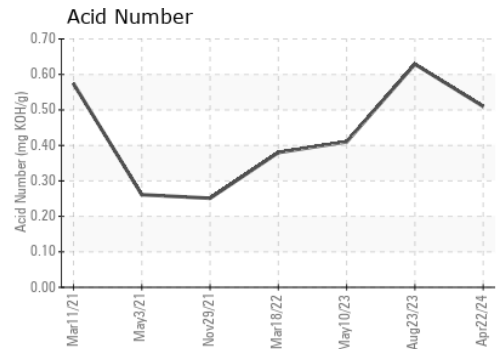
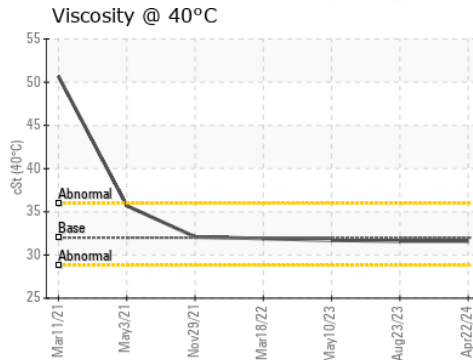
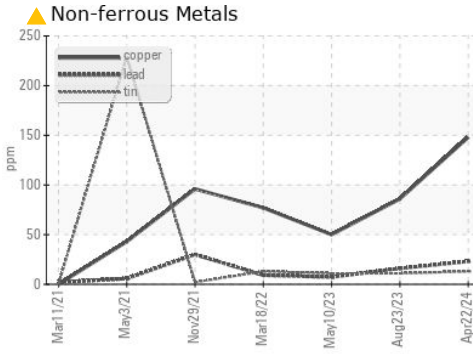
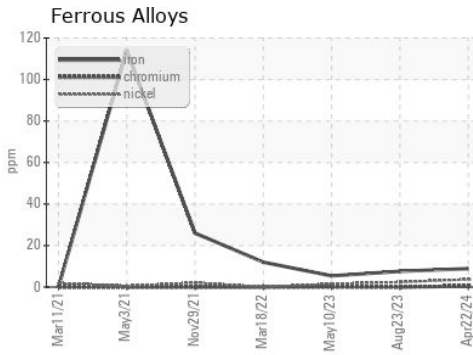


FLUID PROPERTIES	method	limit/base	current	history1	history2
Visc @ 40°C	cSt	ASTM D445 32	31.6	31.6	31.7

SAMPLE IMAGES	method	limit/base	current	history1	history2
---------------	--------	------------	---------	----------	----------



GRAPHS



Laboratory : WearCheck USA - 501 Madison Ave., Cary, NC 27513
Sample No. : RP0037596
Lab Number : 06159829
Unique Number : 10995252
Test Package : IND 2

ENERGY TRANSFER - MARCUS HOOK TF
 7 COMMERCE DRIVE
 ASTON, PA
 US 19014
 Contact: QUITA MORGAN

To discuss this sample report, contact Customer Service at 1-800-237-1369.

* - Denotes test methods that are outside of the ISO 17025 scope of accreditation.

Statements of conformity to specifications are based on the simple acceptance decision rule (JCGM 106:2012)

T: (610)220-8386

F: