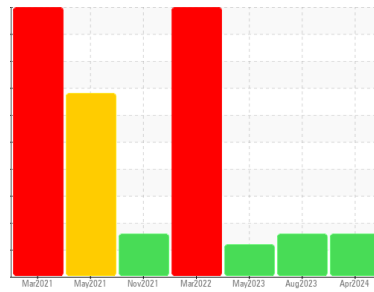




OIL ANALYSIS REPORT

Sample Rating Trend



Machine Id
MHTF_4B MHTF_4B_P4
 Component
Non-Drive End Pump
 Fluid
ROYAL PURPLE SYNFILM GT 32 (--- GAL)

DIAGNOSIS

- Recommendation**
No corrective action is recommended at this time. Resample at the next service interval to monitor.
- Wear**
Bearing and/or bushing wear is indicated.
- Contamination**
There is no indication of any contamination in the oil.
- Fluid Condition**
The AN level is acceptable for this fluid. The condition of the oil is suitable for further service.

SAMPLE INFORMATION

	method	limit/base	current	history1	history2
Sample Number	Client Info		RP0037597	RP0033065	RP0027453
Sample Date	Client Info		22 Apr 2024	23 Aug 2023	10 May 2023
Machine Age	hrs	Client Info	0	0	0
Oil Age	hrs	Client Info	0	0	0
Oil Changed	Client Info		N/A	N/A	N/A
Sample Status			ABNORMAL	ABNORMAL	ABNORMAL

WEAR METALS

	method	limit/base	current	history1	history2
Iron	ppm	ASTM D5185m >90	29	17	11
Chromium	ppm	ASTM D5185m >5	<1	0	<1
Nickel	ppm	ASTM D5185m >5	3	2	<1
Titanium	ppm	ASTM D5185m >3	<1	0	<1
Silver	ppm	ASTM D5185m >3	<1	<1	0
Aluminum	ppm	ASTM D5185m >7	2	0	<1
Lead	ppm	ASTM D5185m >12	▲ 24	▲ 14	▲ 12
Copper	ppm	ASTM D5185m >30	▲ 45	▲ 30	20
Tin	ppm	ASTM D5185m >9	6	4	2
Vanadium	ppm	ASTM D5185m	<1	0	0
Cadmium	ppm	ASTM D5185m	<1	0	0

ADDITIVES

	method	limit/base	current	history1	history2
Boron	ppm	ASTM D5185m	0	0	0
Barium	ppm	ASTM D5185m	0	1	0
Molybdenum	ppm	ASTM D5185m	1	0	0
Manganese	ppm	ASTM D5185m	3	2	1
Magnesium	ppm	ASTM D5185m	18	43	78
Calcium	ppm	ASTM D5185m	3	0	0
Phosphorus	ppm	ASTM D5185m	1	6	0
Zinc	ppm	ASTM D5185m	55	54	35

CONTAMINANTS

	method	limit/base	current	history1	history2
Silicon	ppm	ASTM D5185m >60	4	3	3
Sodium	ppm	ASTM D5185m	<1	0	4
Potassium	ppm	ASTM D5185m >20	2	1	4
Water	%	ASTM D6304 >.1	0.019	0.015	0.018
ppm Water	ppm	ASTM D6304 >1000	198	150.1	184.4

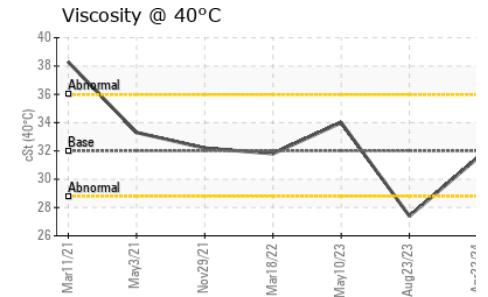
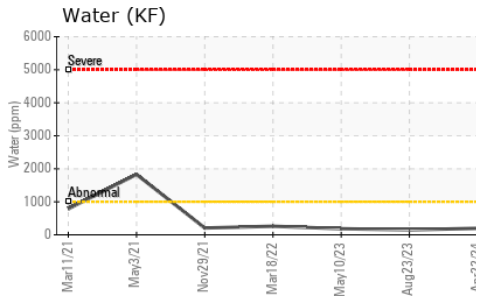
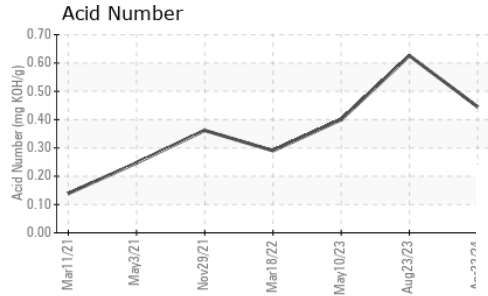
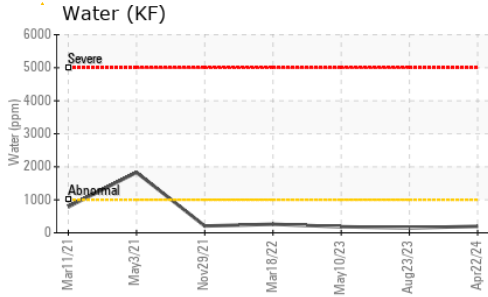
FLUID DEGRADATION

	method	limit/base	current	history1	history2
Acid Number (AN)	mg KOH/g	ASTM D8045	0.445	0.626	0.40

VISUAL

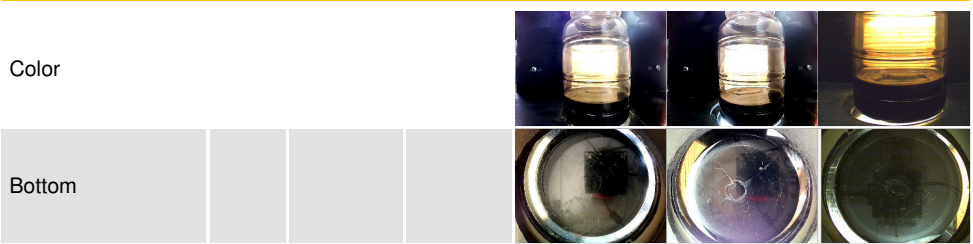
	method	limit/base	current	history1	history2
White Metal	scalar	*Visual NONE	NONE	NONE	NONE
Yellow Metal	scalar	*Visual NONE	NONE	NONE	NONE
Precipitate	scalar	*Visual NONE	NONE	NONE	NONE
Silt	scalar	*Visual NONE	NONE	NONE	NONE
Debris	scalar	*Visual NONE	LIGHT	NONE	▲ MODER
Sand/Dirt	scalar	*Visual NONE	NONE	NONE	NONE
Appearance	scalar	*Visual NORML	NORML	NORML	NORML
Odor	scalar	*Visual NORML	NORML	NORML	NORML
Emulsified Water	scalar	*Visual >.1	NEG	NEG	NEG
Free Water	scalar	*Visual	NEG	NEG	NEG

OIL ANALYSIS REPORT

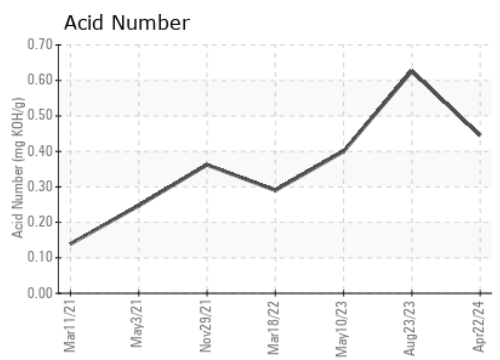
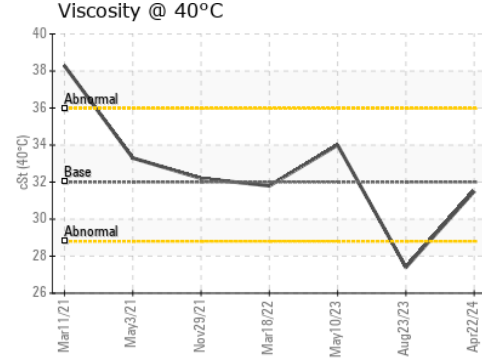
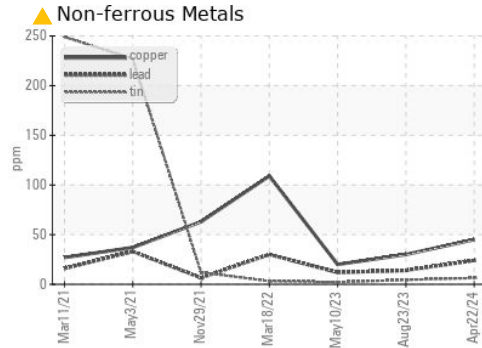
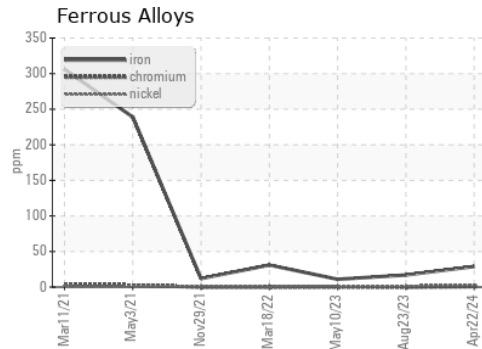


FLUID PROPERTIES	method	limit/base	current	history1	history2
Visc @ 40°C	cSt	ASTM D445 32	31.5	27.4	34.0

SAMPLE IMAGES	method	limit/base	current	history1	history2
---------------	--------	------------	---------	----------	----------



GRAPHS



Laboratory : WearCheck USA - 501 Madison Ave., Cary, NC 27513
Sample No. : RP0037597
Lab Number : 06159830
Unique Number : 10995253
Test Package : IND 2

Received : 24 Apr 2024
Tested : 25 Apr 2024
Diagnosed : 26 Apr 2024 - Don Baldrige

ENERGY TRANSFER - MARCUS HOOK TF
 7 COMMERCE DRIVE
 ASTON, PA
 US 19014
 Contact: QUITA MORGAN

To discuss this sample report, contact Customer Service at 1-800-237-1369.

* - Denotes test methods that are outside of the ISO 17025 scope of accreditation.

Statements of conformity to specifications are based on the simple acceptance decision rule (JCGM 106:2012)

T: (610)220-8386

F: