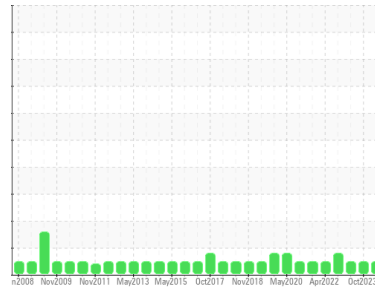




# OIL ANALYSIS REPORT

Sample Rating Trend



**NORMAL**



Area

**LFC-1030-CM-01-CM030 [1962553]**

Machine Id

**DM03PP03-1030 - SINE PUMP DRY MIXER #3 SOUTH**

Component

**Gearbox**

Fluid

**LE 4220 (--- GAL)**

## DIAGNOSIS

### Recommendation

Resample at the next service interval to monitor.  
NOTE: Please provide information regarding reservoir capacity, filter type and micron rating with next sample.

### Wear

All component wear rates are normal.

### Contamination

There is no indication of any contamination in the oil.

### Fluid Condition

The AN level is acceptable for this fluid. The condition of the oil is suitable for further service.

## SAMPLE INFORMATION

	method	limit/base	current	history1	history2
Sample Number	Client Info		<b>WC0918530</b>	WC0851582	WC0851580
Sample Date	Client Info		<b>23 Apr 2024</b>	23 Oct 2023	20 Oct 2023
Machine Age	hrs	Client Info	<b>180</b>	0	0
Oil Age	hrs	Client Info	<b>180</b>	0	0
Oil Changed	Client Info		<b>N/A</b>	N/A	N/A
Sample Status			<b>NORMAL</b>	NORMAL	NORMAL

## CONTAMINATION

	method	limit/base	current	history1	history2
Water	WC Method	>0.2	<b>NEG</b>	NEG	NEG

## WEAR METALS

	method	limit/base	current	history1	history2
Iron	ppm	ASTM D5185m >200	<b>71</b>	110	137
Chromium	ppm	ASTM D5185m >15	<b>&lt;1</b>	<1	1
Nickel	ppm	ASTM D5185m >15	<b>0</b>	0	0
Titanium	ppm	ASTM D5185m	<b>&lt;1</b>	0	0
Silver	ppm	ASTM D5185m	<b>0</b>	0	0
Aluminum	ppm	ASTM D5185m >25	<b>0</b>	0	0
Lead	ppm	ASTM D5185m >100	<b>0</b>	0	0
Copper	ppm	ASTM D5185m >200	<b>&lt;1</b>	<1	<1
Tin	ppm	ASTM D5185m >25	<b>0</b>	0	0
Vanadium	ppm	ASTM D5185m	<b>0</b>	0	0
Cadmium	ppm	ASTM D5185m	<b>0</b>	0	0

## ADDITIVES

	method	limit/base	current	history1	history2
Boron	ppm	ASTM D5185m	<b>0</b>	0	0
Barium	ppm	ASTM D5185m	<b>0</b>	0	0
Molybdenum	ppm	ASTM D5185m	<b>0</b>	0	0
Manganese	ppm	ASTM D5185m	<b>2</b>	2	3
Magnesium	ppm	ASTM D5185m	<b>0</b>	0	0
Calcium	ppm	ASTM D5185m	<b>0</b>	0	0
Phosphorus	ppm	ASTM D5185m	<b>351</b>	328	359
Zinc	ppm	ASTM D5185m	<b>5</b>	7	8
Sulfur	ppm	ASTM D5185m	<b>1873</b>	1405	1353

## CONTAMINANTS

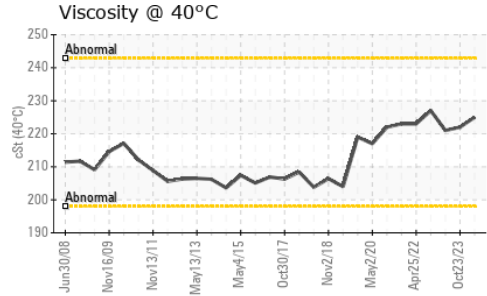
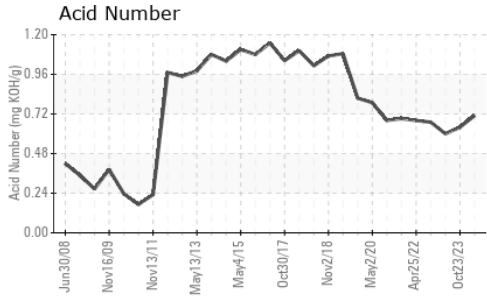
	method	limit/base	current	history1	history2
Silicon	ppm	ASTM D5185m >50	<b>2</b>	3	3
Sodium	ppm	ASTM D5185m	<b>1</b>	0	0
Potassium	ppm	ASTM D5185m >20	<b>0</b>	0	0

## FLUID DEGRADATION

	method	limit/base	current	history1	history2
Acid Number (AN)	mg KOH/g	ASTM D8045	<b>0.71</b>	0.64	0.60



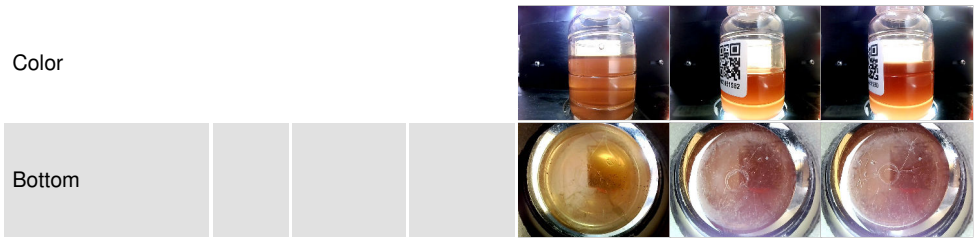
# OIL ANALYSIS REPORT



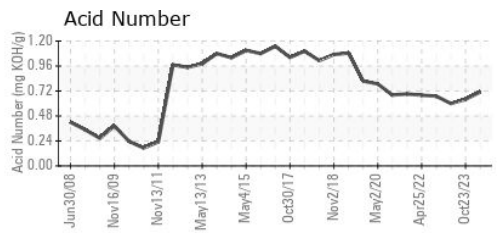
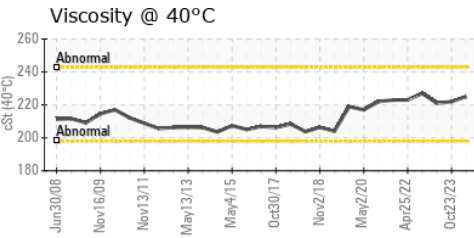
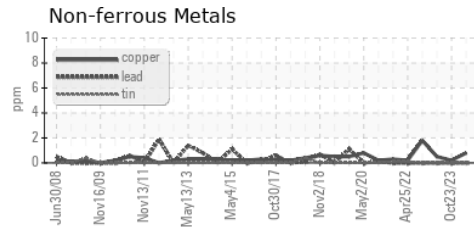
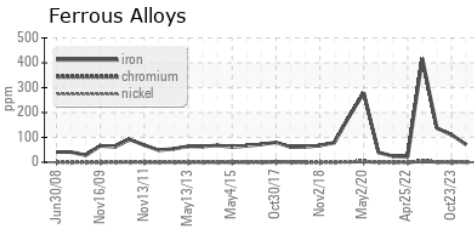
VISUAL	method	limit/base	current	history1	history2
White Metal	scalar	*Visual	NONE	NONE	NONE
Yellow Metal	scalar	*Visual	NONE	NONE	NONE
Precipitate	scalar	*Visual	NONE	NONE	NONE
Silt	scalar	*Visual	NONE	NONE	NONE
Debris	scalar	*Visual	NONE	NONE	NONE
Sand/Dirt	scalar	*Visual	NONE	NONE	NONE
Appearance	scalar	*Visual	NORML	NORML	NORML
Odor	scalar	*Visual	NORML	NORML	NORML
Emulsified Water	scalar	*Visual	>0.2	NEG	NEG
Free Water	scalar	*Visual		NEG	NEG

FLUID PROPERTIES	method	limit/base	current	history1	history2
Visc @ 40°C	cSt	ASTM D445	<b>225</b>	222	221

SAMPLE IMAGES	method	limit/base	current	history1	history2
---------------	--------	------------	---------	----------	----------



## GRAPHS



**Laboratory** : WearCheck USA - 501 Madison Ave., Cary, NC 27513  
**Sample No.** : WC0918530      **Received** : 26 Apr 2024  
**Lab Number** : **06161635**      **Tested** : 29 Apr 2024  
**Unique Number** : 10997058      **Diagnosed** : 29 Apr 2024 - Wes Davis  
**Test Package** : IND 2

**LEPRINO FOODS - ALLENDALE**  
 4700 RICH STREET  
 ALLENDALE, MI  
 US 49401  
 Contact: BILL FERRIER  
 BFERRIER@LEPRINOFOODS.COM

To discuss this sample report, contact Customer Service at 1-800-237-1369.

\* - Denotes test methods that are outside of the ISO 17025 scope of accreditation.

Statements of conformity to specifications are based on the simple acceptance decision rule (JCGM 106:2012)