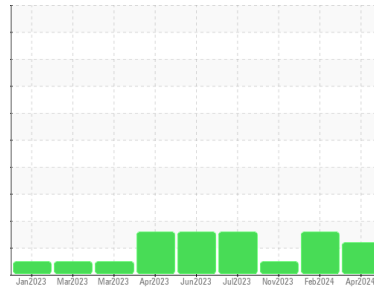




# FUEL REPORT

## Sample Rating Trend



ISO



Area  
**GUAY SON/Yavaros [CONHER]**

Machine Id  
**Barda 1 Diesel Fuel**

Component  
**Diesel Fuel**

Fluid  
**No.2 DIESEL FUEL (ULTRALOW SULPHUR) (--- GAL)**

### DIAGNOSIS

#### Recommendation

This is a baseline read-out on the submitted sample. We recommend you service the filters on this component if applicable.

#### Corrosion

All metal levels are normal indicating no corrosion in the system.

#### Contaminants

There is a high amount of particulates present in the fuel. The water content is negligible.

#### Fuel Condition

The condition of the fuel is acceptable for the time in service.

SAMPLE INFORMATION		method	limit/base	current	history1	history2
Sample Number	Client Info			<b>KL0014577</b>	KL0014120	KL0013396
Sample Date	Client Info			<b>19 Apr 2024</b>	02 Feb 2024	17 Nov 2023
Machine Age	hrs	Client Info		<b>0</b>	0	0
Sample Status				<b>ABNORMAL</b>	ABNORMAL	NORMAL

PHYSICAL PROPERTIES		method	limit/base	current	history1	history2
Visc @ 40°C	cSt	ASTM D445	3.0	<b>2.53</b>	2.76	2.53

SULFUR CONTENT		method	limit/base	current	history1	history2
Sulfur	ppm	ASTM D5185m	10	<b>0</b>	117	0

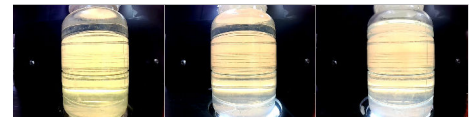
CONTAMINANTS		method	limit/base	current	history1	history2
Silicon	ppm	ASTM D5185m	<1.0	<b>0</b>	0	0
Sodium	ppm	ASTM D5185m	<0.1	<b>&lt;1</b>	0	0
Potassium	ppm	ASTM D5185m	<0.1	<b>0</b>	0	<1
Water	%	ASTM D6304	<0.05	<b>0.001</b>	0.003	0.002
ppm Water	ppm	ASTM D6304	<500	<b>10</b>	39	18

FLUID CLEANLINESS		method	limit/base	current	history1	history2
Particles >4µm		ASTM D7647		<b>7592</b>	5678	1218
Particles >6µm		ASTM D7647	>640	<b>▲ 1403</b>	▲ 1413	250
Particles >14µm		ASTM D7647	>80	<b>● 93</b>	▲ 92	27
Particles >21µm		ASTM D7647	>20	<b>22</b>	▲ 23	6
Particles >38µm		ASTM D7647	>4	<b>0</b>	1	0
Particles >71µm		ASTM D7647	>3	<b>0</b>	0	0
Oil Cleanliness		ISO 4406 (c)	>16/13	<b>▲ 18/14</b>	▲ 18/14	15/12

HEAVY METALS		method	limit/base	current	history1	history2
Aluminum	ppm	ASTM D5185m	<0.1	<b>0</b>	0	<1
Nickel	ppm	ASTM D5185m	<0.1	<b>0</b>	0	<1
Lead	ppm	ASTM D5185m	<0.1	<b>0</b>	0	<1
Vanadium	ppm	ASTM D5185m	<0.1	<b>0</b>	0	0
Iron	ppm	ASTM D5185m	<0.1	<b>0</b>	0	<1
Calcium	ppm	ASTM D5185m	<0.1	<b>0</b>	0	<1
Magnesium	ppm	ASTM D5185m	<0.1	<b>0</b>	0	0
Phosphorus	ppm	ASTM D5185m	<0.1	<b>0</b>	0	0
Zinc	ppm	ASTM D5185m	<0.1	<b>0</b>	0	0

SAMPLE IMAGES		method	limit/base	current	history1	history2
---------------	--	--------	------------	---------	----------	----------

Color



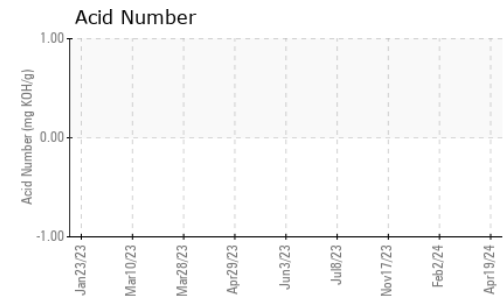
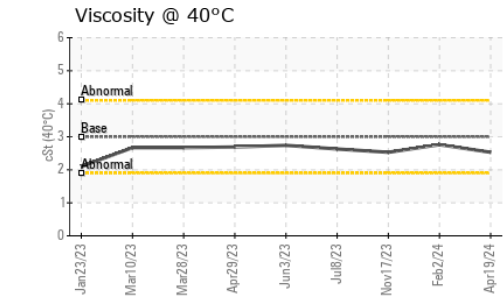
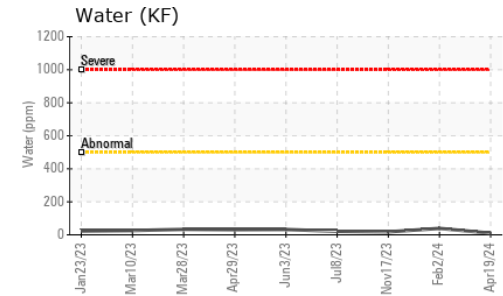
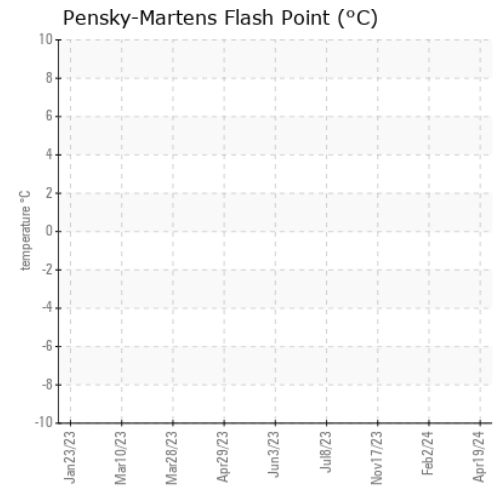
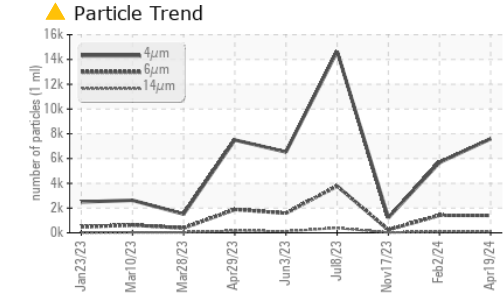
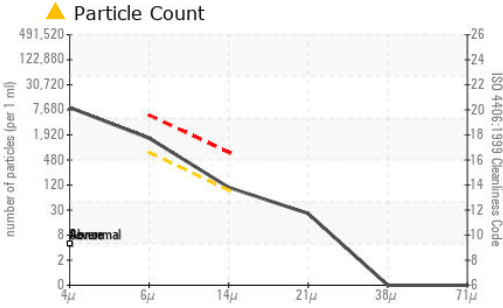
Bottom





# FUEL REPORT

## GRAPHS



**Laboratory** : WearCheck USA - 501 Madison Ave., Cary, NC 27513  
**Sample No.** : KL0014577  
**Lab Number** : 06174546  
**Unique Number** : 11020599  
**Test Package** : MOB 2 ( Additional Tests: KF, PrtCount )

**Received** : 09 May 2024  
**Tested** : 13 May 2024  
**Diagnosed** : 13 May 2024 - Angela Borella

**CONOR**  
 JUAREZ 348  
 HERMOSILLO,  
 MX 83140

Contact: EDUARDO GARCIA  
 egarcia.comsa@gmail.com

To discuss this sample report, contact Customer Service at 1-800-237-1369.

\* - Denotes test methods that are outside of the ISO 17025 scope of accreditation.

Statements of conformity to specifications are based on the simple acceptance decision rule (JCGM 106:2012)

T: (526)622-1581 x:81  
 F: x: