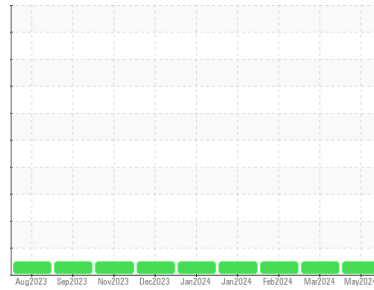




FUEL REPORT

Sample Rating Trend



NORMAL



Machine Id
F/S DEISEL EB 5500

Component
Diesel Fuel

Fluid
No.2 DIESEL FUEL (ULTRALOW SULPHUR) (--- GAL)

DIAGNOSIS

Recommendation

No corrective action is recommended at this time.

Corrosion

All metal levels are normal indicating no corrosion in the system.

Contaminants

The water content is negligible. There is no indication of any contamination in the fuel.

Fuel Condition

The condition of the fuel is acceptable for the time in service.

SAMPLE INFORMATION		method	limit/base	current	history1	history2
Sample Number	Client Info			RP0039293	RP0042679	RP0042608
Sample Date	Client Info			08 May 2024	26 Mar 2024	29 Feb 2024
Machine Age	mls	Client Info		0	0	0
Sample Status				NORMAL	NORMAL	NORMAL

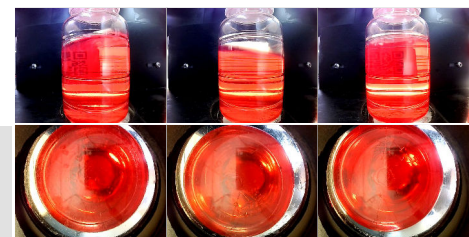
PHYSICAL PROPERTIES		method	limit/base	current	history1	history2
Visc @ 40°C	cSt	ASTM D445	3.0	2.7	2.53	2.99

CONTAMINANTS		method	limit/base	current	history1	history2
Silicon	ppm	ASTM D5185m	<1.0	0	0	<1
Sodium	ppm	ASTM D5185m	<0.1	<1	2	1
Potassium	ppm	ASTM D5185m	<0.1	0	0	0
Water	%	ASTM D6304	<0.05	0.002	0.003	0.003
ppm Water	ppm	ASTM D6304	<500	25	27	30

HEAVY METALS		method	limit/base	current	history1	history2
Aluminum	ppm	ASTM D5185m	<0.1	0	0	0
Nickel	ppm	ASTM D5185m	<0.1	0	<1	0
Lead	ppm	ASTM D5185m	<0.1	0	0	0
Vanadium	ppm	ASTM D5185m	<0.1	0	<1	0
Iron	ppm	ASTM D5185m	<0.1	0	0	0
Calcium	ppm	ASTM D5185m	<0.1	0	0	0
Magnesium	ppm	ASTM D5185m	<0.1	0	0	0
Phosphorus	ppm	ASTM D5185m	<0.1	0	0	0
Zinc	ppm	ASTM D5185m	<0.1	0	0	0

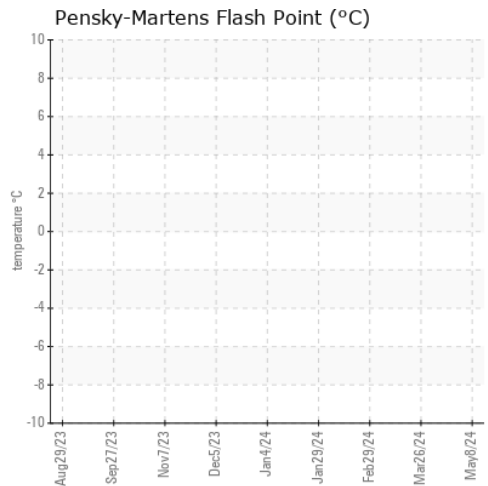
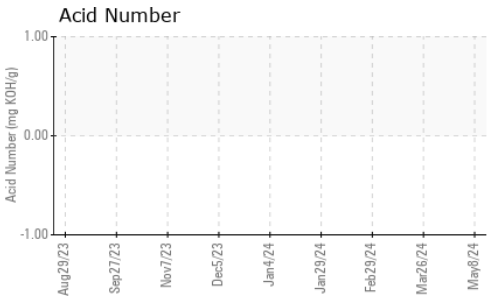
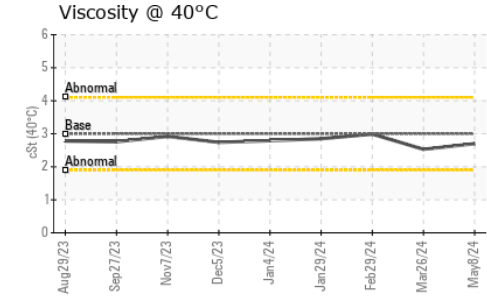
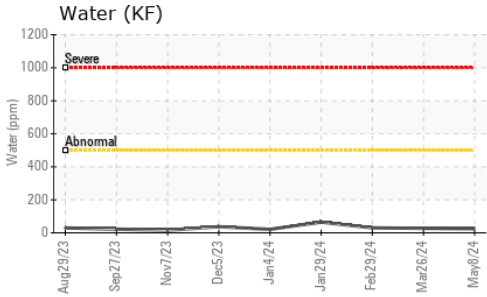
SAMPLE IMAGES

SAMPLE IMAGES		method	limit/base	current	history1	history2
Color						
Bottom						



FUEL REPORT

GRAPHS



Certificate L2367

To discuss this sample report, contact Customer Service at 1-800-237-1369.

* - Denotes test methods that are outside of the ISO 17025 scope of accreditation.

Statements of conformity to specifications are based on the simple acceptance decision rule (JCGM 106:2012)

Laboratory : WearCheck USA - 501 Madison Ave., Cary, NC 27513
Sample No. : RP0039293
Lab Number : **06174974**
Unique Number : 11021027
Test Package : IND 2
Received : 09 May 2024
Tested : 13 May 2024
Diagnosed : 13 May 2024 - Angela Borella

OUTOKUMPU STAINLESS USA
 HWY 43 N
 CALVERT, AL
 US 36513
 Contact: MARIO JOHNSON
 Mario.johnson@outokumpu.com
 T: (251)321-4105
 F: x: