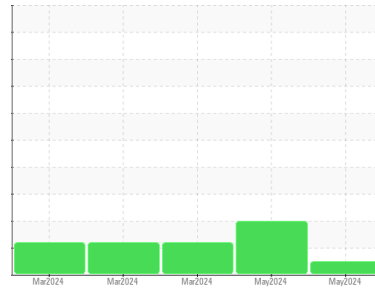




OIL ANALYSIS REPORT

Sample Rating Trend



NORMAL



Machine Id
947754
 Component
Hydraulic System
 Fluid
R&O OIL ISO 32 (--- GAL)

DIAGNOSIS

Recommendation

Resample at the next service interval to monitor.

Wear

All component wear rates are normal.

Contamination

There is no indication of any contamination in the oil. The amount and size of particulates present in the system are acceptable.

Fluid Condition

The AN level is acceptable for this fluid. The condition of the oil is suitable for further service.

SAMPLE INFORMATION		method	limit/base	current	history1	history2
Sample Number	Client Info			PH0000151	PH0000142	PH0000304
Sample Date	Client Info			09 May 2024	08 May 2024	27 Mar 2024
Machine Age	hrs	Client Info		0	0	0
Oil Age	hrs	Client Info		0	0	0
Oil Changed	Client Info			N/A	N/A	Filtered
Sample Status				NORMAL	ABNORMAL	ABNORMAL

CONTAMINATION		method	limit/base	current	history1	history2
Water	WC Method		>0.05	NEG	NEG	NEG

WEAR METALS		method	limit/base	current	history1	history2
Iron	ppm	ASTM D5185m	>20	2	3	5
Chromium	ppm	ASTM D5185m	>20	0	0	<1
Nickel	ppm	ASTM D5185m	>20	0	<1	2
Titanium	ppm	ASTM D5185m		0	0	<1
Silver	ppm	ASTM D5185m		0	0	0
Aluminum	ppm	ASTM D5185m	>20	0	0	2
Lead	ppm	ASTM D5185m	>20	1	2	3
Copper	ppm	ASTM D5185m	>20	4	4	3
Tin	ppm	ASTM D5185m	>20	<1	<1	1
Vanadium	ppm	ASTM D5185m		0	0	<1
Cadmium	ppm	ASTM D5185m		0	0	<1

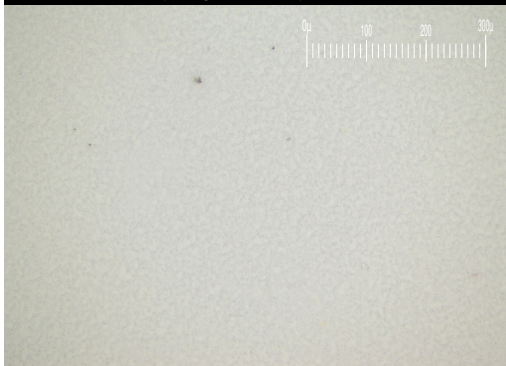
ADDITIVES		method	limit/base	current	history1	history2
Boron	ppm	ASTM D5185m	5	0	0	0
Barium	ppm	ASTM D5185m	5	0	0	0
Molybdenum	ppm	ASTM D5185m	5	0	0	1
Manganese	ppm	ASTM D5185m		1	1	<1
Magnesium	ppm	ASTM D5185m	5	0	0	<1
Calcium	ppm	ASTM D5185m	5	4	4	7
Phosphorus	ppm	ASTM D5185m	100	27	28	12
Zinc	ppm	ASTM D5185m	25	26	27	11
Sulfur	ppm	ASTM D5185m	1500	1628	1649	1635

CONTAMINANTS		method	limit/base	current	history1	history2
Silicon	ppm	ASTM D5185m	>15	11	1	1
Sodium	ppm	ASTM D5185m		2	2	<1
Potassium	ppm	ASTM D5185m	>20	0	0	2

FLUID CLEANLINESS		method	limit/base	current	history1	history2
Particles >4µm		ASTM D7647	>10000	677	▲ 42116	▲ 88320
Particles >6µm		ASTM D7647	>2500	274	▲ 8473	▲ 9890
Particles >14µm		ASTM D7647	>320	37	▲ 359	28
Particles >21µm		ASTM D7647	>80	9	▲ 81	8
Particles >38µm		ASTM D7647	>20	0	7	0
Particles >71µm		ASTM D7647	>4	0	1	0
Oil Cleanliness		ISO 4406 (c)	>20/18/15	17/15/12	▲ 23/20/16	▲ 24/20/12

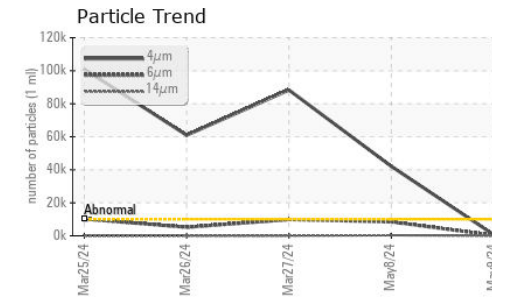
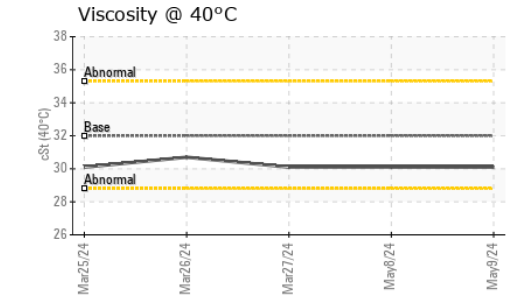
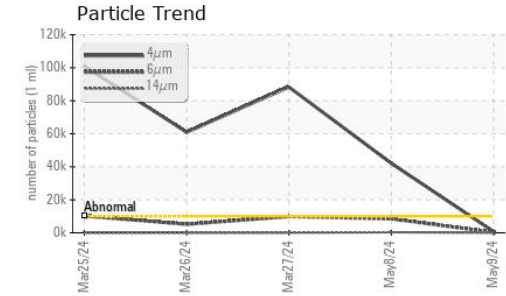
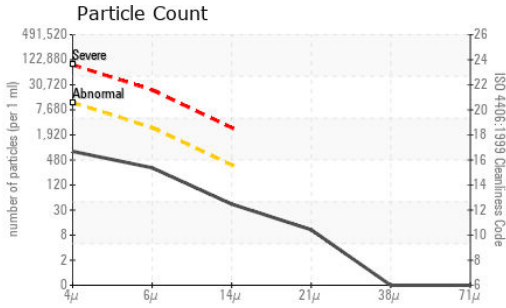
FLUID DEGRADATION		method	limit/base	current	history1	history2
Acid Number (AN)	mg KOH/g	ASTM D8045	0.08	0.112	0.076	0.07

Particle Filter (Magn: 200 x)





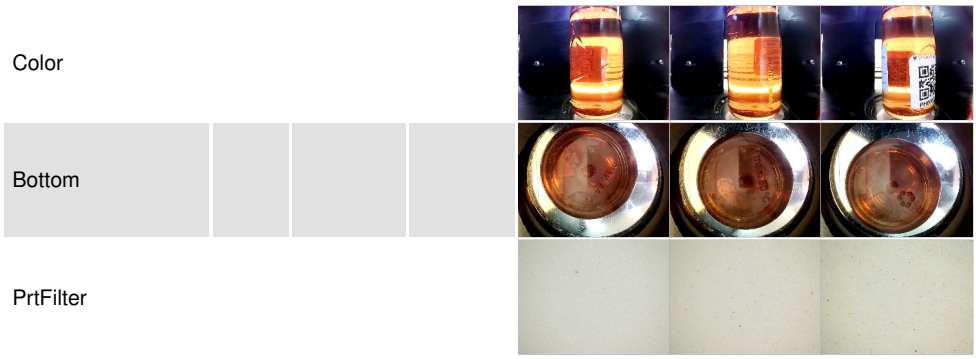
OIL ANALYSIS REPORT



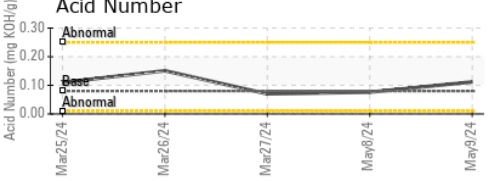
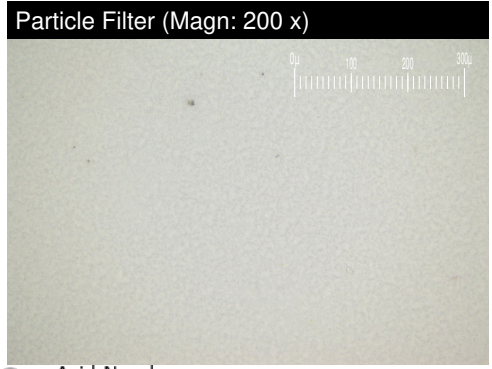
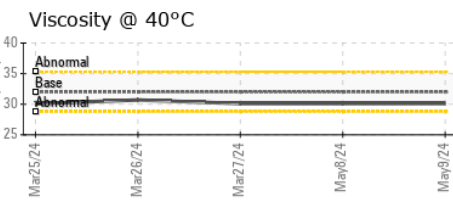
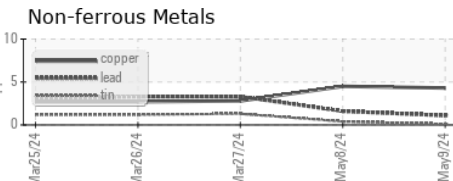
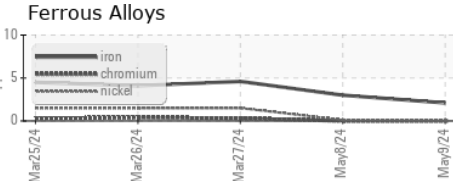
VISUAL	method	limit/base	current	history1	history2
White Metal	scalar	*Visual	NONE	NONE	NONE
Yellow Metal	scalar	*Visual	NONE	NONE	NONE
Precipitate	scalar	*Visual	NONE	NONE	NONE
Silt	scalar	*Visual	NONE	NONE	NONE
Debris	scalar	*Visual	NONE	NONE	NONE
Sand/Dirt	scalar	*Visual	NONE	NONE	NONE
Appearance	scalar	*Visual	NORML	NORML	NORML
Odor	scalar	*Visual	NORML	NORML	NORML
Emulsified Water	scalar	*Visual	>0.05	NEG	NEG
Free Water	scalar	*Visual		NEG	NEG

FLUID PROPERTIES	method	limit/base	current	history1	history2
Visc @ 40°C	cSt	ASTM D445	32	30.1	30.1

SAMPLE IMAGES	method	limit/base	current	history1	history2
---------------	--------	------------	---------	----------	----------



GRAPHS



Laboratory : WearCheck USA - 501 Madison Ave., Cary, NC 27513
Sample No. : PH0000151 **Received** : 13 May 2024
Lab Number : 06177095 **Tested** : 16 May 2024
Unique Number : 11023148 **Diagnosed** : 16 May 2024 - Jonathan Hester
Test Package : PLANT (Additional Tests: PrtFilter)

ALLTECH ENGINEERING CORP
 2515 PILOT KNOB RD
 MENDOTA HEIGHTS, MN
 US 55120
 Contact: JAKE ANDERSON
 janderson@alltechengineering.com
 T: (715)607-0738
 F:

To discuss this sample report, contact Customer Service at 1-800-237-1369.
 * - Denotes test methods that are outside of the ISO 17025 scope of accreditation.
 Statements of conformity to specifications are based on the simple acceptance decision rule (JCGM 106:2012)