

Area

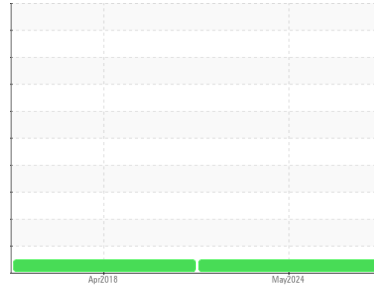
PALEXTRA 44

Machine Id

PALATEK 1602020008 - PRATTS INDUSTRIES

Component

Compressor



DIAGNOSIS

Recommendation

Resample at the next service interval to monitor.

Wear

All component wear rates are normal.

Contamination

There is no indication of any contamination in the oil.

Fluid Condition

The AN level is acceptable for this fluid. The condition of the oil is suitable for further service.

SAMPLE INFORMATION method limit/base current history1 history2

Sample Number	Client Info	UCS06177326	UCS04468568	---
Sample Date	Client Info	04 May 2024	13 Apr 2018	---
Machine Age	hrs	Client Info	47000	4128
Oil Age	hrs	Client Info	4000	4128
Oil Changed	Client Info	Not Changed	Not Changed	---
Sample Status		NORMAL	NORMAL	---

CONTAMINATION method limit/base current history1 history2

Water	WC Method	>0.1	NEG	NEG	---
-------	-----------	------	------------	-----	-----

WEAR METALS method limit/base current history1 history2

Iron	ppm	ASTM D5185m	>50	0	0	---
Chromium	ppm	ASTM D5185m	>10	<1	0	---
Nickel	ppm	ASTM D5185m		0	<1	---
Titanium	ppm	ASTM D5185m		<1	0	---
Silver	ppm	ASTM D5185m		0	0	---
Aluminum	ppm	ASTM D5185m	>25	2	<1	---
Lead	ppm	ASTM D5185m	>25	<1	<1	---
Copper	ppm	ASTM D5185m	>50	<1	0	---
Tin	ppm	ASTM D5185m	>15	<1	<1	---
Antimony	ppm	ASTM D5185m		---	0	---
Vanadium	ppm	ASTM D5185m		<1	<1	---
Cadmium	ppm	ASTM D5185m		<1	0	---

ADDITIVES method limit/base current history1 history2

Boron	ppm	ASTM D5185m	0	0	0	---
Barium	ppm	ASTM D5185m	0.3	2	0	---
Molybdenum	ppm	ASTM D5185m	0	<1	0	---
Manganese	ppm	ASTM D5185m	0.3	0	0	---
Magnesium	ppm	ASTM D5185m	0.4	0	0	---
Calcium	ppm	ASTM D5185m	0	4	0	---
Phosphorus	ppm	ASTM D5185m	689	472	340	---
Zinc	ppm	ASTM D5185m	0	2	0	---
Sulfur	ppm	ASTM D5185m	1237	569	127	---

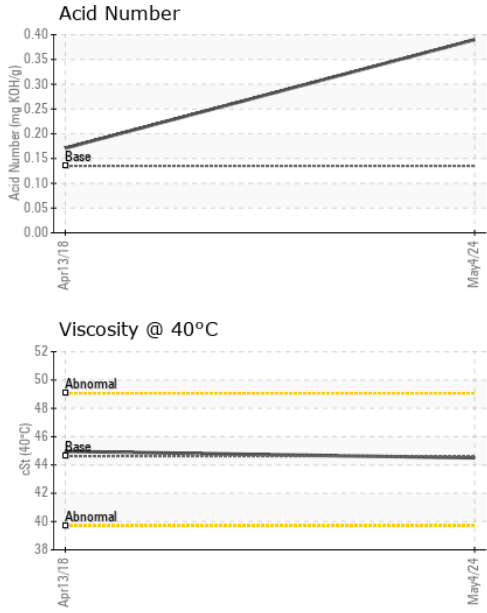
CONTAMINANTS method limit/base current history1 history2

Silicon	ppm	ASTM D5185m	>25	4	5	---
Sodium	ppm	ASTM D5185m		0	<1	---
Potassium	ppm	ASTM D5185m	>20	1	0	---

FLUID DEGRADATION method limit/base current history1 history2

Acid Number (AN)	mg KOH/g	ASTM D8045	0.135	0.39	0.171	---
------------------	----------	------------	-------	-------------	-------	-----

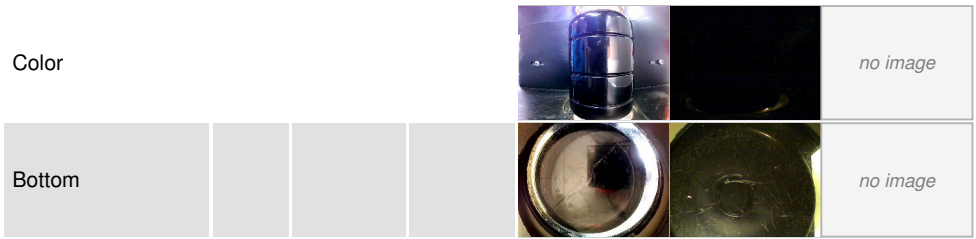
OIL ANALYSIS REPORT



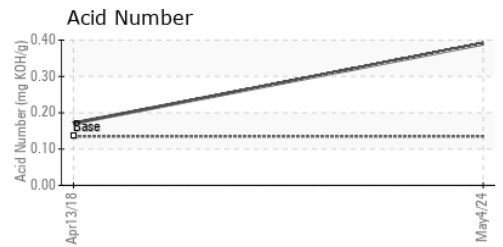
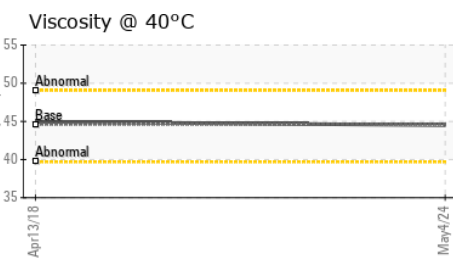
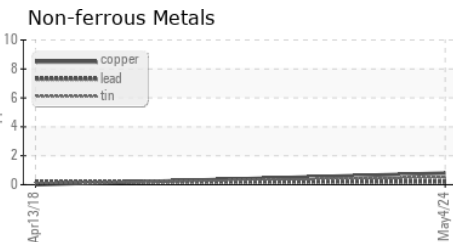
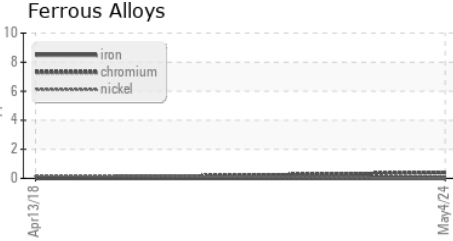
VISUAL	method	limit/base	current	history1	history2	
White Metal	scalar	*Visual	NONE	NONE	LIGHT	---
Yellow Metal	scalar	*Visual	NONE	NONE	NONE	---
Precipitate	scalar	*Visual	NONE	NONE	NONE	---
Silt	scalar	*Visual	NONE	NONE	NONE	---
Debris	scalar	*Visual	NONE	NONE	NONE	---
Sand/Dirt	scalar	*Visual	NONE	NONE	NONE	---
Appearance	scalar	*Visual	NORML	NORML	NORML	---
Odor	scalar	*Visual	NORML	NORML	NORML	---
Emulsified Water	scalar	*Visual	>0.1	NEG	NEG	---
Free Water	scalar	*Visual		NEG	NEG	---

FLUID PROPERTIES	method	limit/base	current	history1	history2	
Visc @ 40°C	cSt	ASTM D445	44.62	44.5	44.96	---

SAMPLE IMAGES	method	limit/base	current	history1	history2
---------------	--------	------------	---------	----------	----------



GRAPHS



Laboratory : WearCheck USA - 501 Madison Ave., Cary, NC 27513
Sample No. : UCS06177326 **Received** : 13 May 2024
Lab Number : **06177326** **Tested** : 14 May 2024
Unique Number : 11023379 **Diagnosed** : 15 May 2024 - Don Baldrige
Test Package : IND 2

JASSCO INC

NEWALLA, OK
 US 74857
 Contact: JOHN
 jasscoinc@proton.me
 T: (405)391-5492
 F:

To discuss this sample report, contact Customer Service at 1-800-237-1369.
 * - Denotes test methods that are outside of the ISO 17025 scope of accreditation.
 Statements of conformity to specifications are based on the simple acceptance decision rule (JCGM 106:2012)