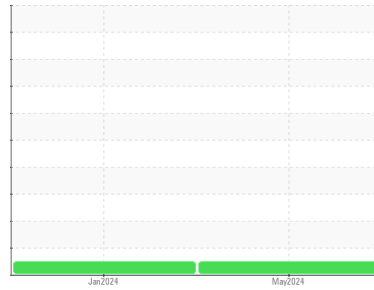




OIL ANALYSIS REPORT

Sample Rating Trend



NORMAL



Area
EXTRUDER
 Machine Id
EXTRUDER-051
 Component
Gear Extruder
 Fluid
LUBRICATION ENG DUOLEC 1605 GEAR OIL 220 (18 GAL)

DIAGNOSIS

Recommendation

Resample at the next service interval to monitor.

Wear

All component wear rates are normal.

Contamination

There is no indication of any contamination in the oil.

Fluid Condition

The AN level is acceptable for this fluid. The condition of the oil is suitable for further service.

SAMPLE INFORMATION		method	limit/base	current	history1	history2
Sample Number	Client Info			WC0902638	WC0849056	---
Sample Date	Client Info			06 May 2024	24 Jan 2024	---
Machine Age	hrs	Client Info		0	0	---
Oil Age	hrs	Client Info		0	0	---
Oil Changed	Client Info			N/A	Not Changd	---
Sample Status				NORMAL	NORMAL	---

CONTAMINATION		method	limit/base	current	history1	history2
Water	WC Method		>0.1	NEG	NEG	---

WEAR METALS		method	limit/base	current	history1	history2
Iron	ppm	ASTM D5185m	>150	28	22	---
Chromium	ppm	ASTM D5185m	>10	<1	0	---
Nickel	ppm	ASTM D5185m	>10	0	<1	---
Titanium	ppm	ASTM D5185m		<1	0	---
Silver	ppm	ASTM D5185m		0	0	---
Aluminum	ppm	ASTM D5185m	>25	2	<1	---
Lead	ppm	ASTM D5185m	>100	<1	1	---
Copper	ppm	ASTM D5185m	>50	<1	<1	---
Tin	ppm	ASTM D5185m	>10	<1	<1	---
Vanadium	ppm	ASTM D5185m		<1	0	---
Cadmium	ppm	ASTM D5185m		<1	0	---

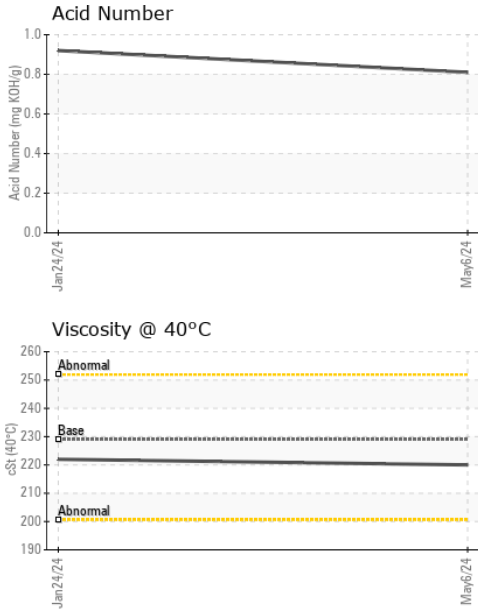
ADDITIVES		method	limit/base	current	history1	history2
Boron	ppm	ASTM D5185m		35	30	---
Barium	ppm	ASTM D5185m		2	0	---
Molybdenum	ppm	ASTM D5185m		<1	0	---
Manganese	ppm	ASTM D5185m		<1	<1	---
Magnesium	ppm	ASTM D5185m		<1	2	---
Calcium	ppm	ASTM D5185m		7	2	---
Phosphorus	ppm	ASTM D5185m		515	461	---
Zinc	ppm	ASTM D5185m		5	0	---
Sulfur	ppm	ASTM D5185m		6795	6206	---

CONTAMINANTS		method	limit/base	current	history1	history2
Silicon	ppm	ASTM D5185m	>50	<1	<1	---
Sodium	ppm	ASTM D5185m		0	<1	---
Potassium	ppm	ASTM D5185m	>20	2	2	---

FLUID DEGRADATION		method	limit/base	current	history1	history2
Acid Number (AN)	mg KOH/g	ASTM D8045		0.81	0.92	---



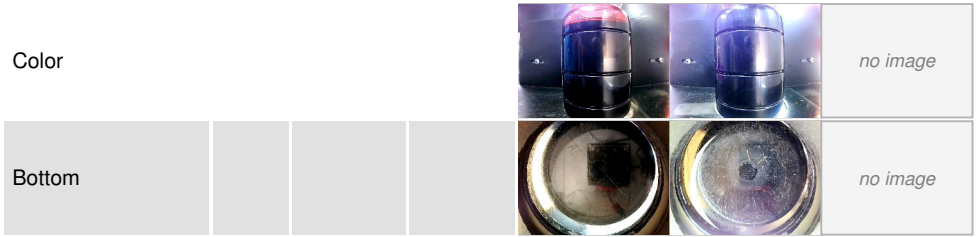
OIL ANALYSIS REPORT



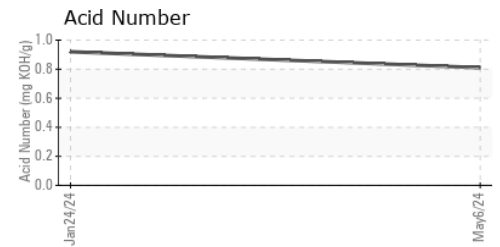
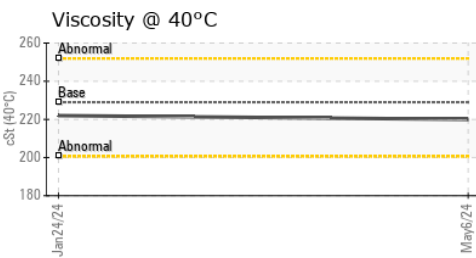
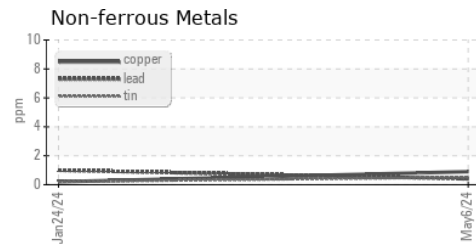
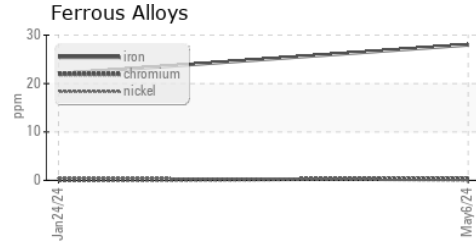
VISUAL	method	limit/base	current	history1	history2	
White Metal	scalar	*Visual	NONE	MODER	MODER	---
Yellow Metal	scalar	*Visual	NONE	NONE	NONE	---
Precipitate	scalar	*Visual	NONE	NONE	NONE	---
Silt	scalar	*Visual	NONE	NONE	NONE	---
Debris	scalar	*Visual	NONE	NONE	NONE	---
Sand/Dirt	scalar	*Visual	NONE	NONE	NONE	---
Appearance	scalar	*Visual	NORML	NORML	NORML	---
Odor	scalar	*Visual	NORML	NORML	NORML	---
Emulsified Water	scalar	*Visual	>0.1	NEG	NEG	---
Free Water	scalar	*Visual		NEG	NEG	---

FLUID PROPERTIES	method	limit/base	current	history1	history2	
Visc @ 40°C	cSt	ASTM D445	229.0	220	222	---

SAMPLE IMAGES	method	limit/base	current	history1	history2
---------------	--------	------------	---------	----------	----------



GRAPHS



Laboratory : WearCheck USA - 501 Madison Ave., Cary, NC 27513
Sample No. : WC0902638 **Received** : 13 May 2024
Lab Number : **06177339** **Tested** : 14 May 2024
Unique Number : 11023392 **Diagnosed** : 15 May 2024 - Don Baldrige
Test Package : IND 2

PRINSCO - HUBBARD
 6401 MILLER ROAD
 HUBBARD, OR
 US 97032

Contact: DAVID ELLIS
 DAVID.ELLIS@PRINSCO.COM

To discuss this sample report, contact Customer Service at 1-800-237-1369.

* - Denotes test methods that are outside of the ISO 17025 scope of accreditation.

Statements of conformity to specifications are based on the simple acceptance decision rule (JCGM 106:2012)

T:
F: