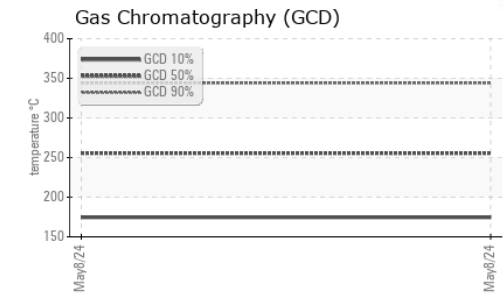
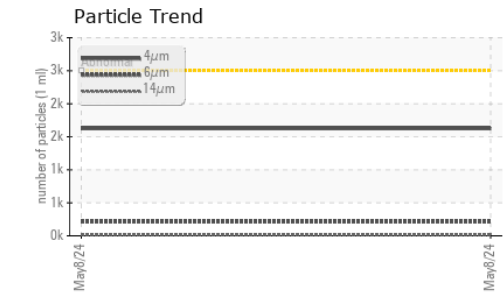
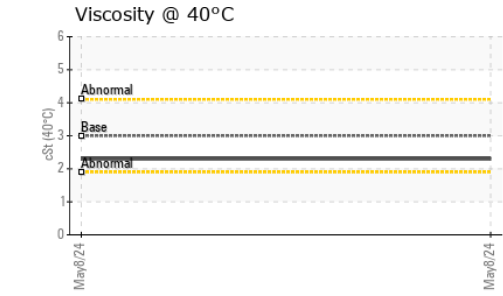
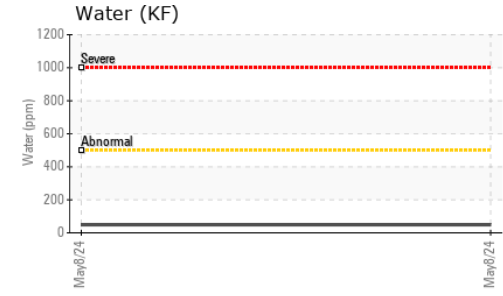
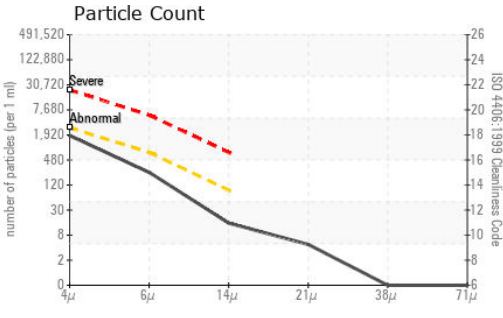




FUEL REPORT

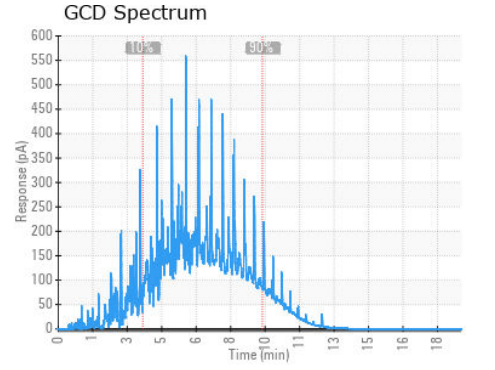
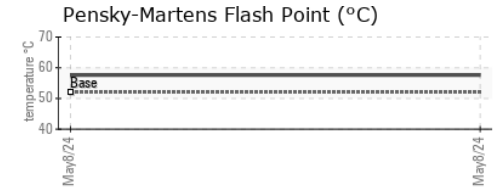
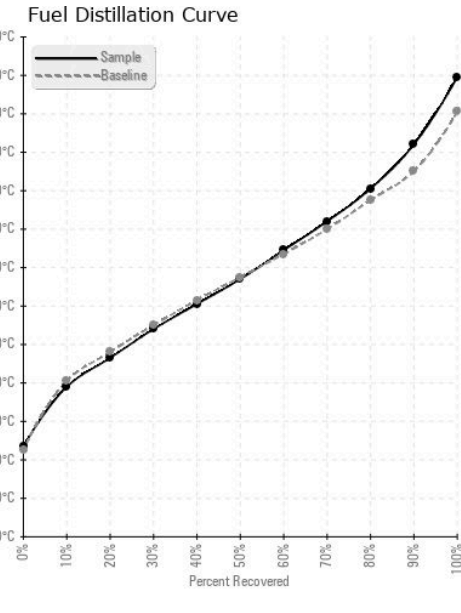


| FLUID CLEANLINESS | method | limit/base | current | history1 | history2 |
|-------------------|--------------|------------|-----------------|----------|----------|
| Particles >4µm | ASTM D7647 | >2500 | 1625 | --- | --- |
| Particles >6µm | ASTM D7647 | >640 | 213 | --- | --- |
| Particles >14µm | ASTM D7647 | >80 | 13 | --- | --- |
| Particles >21µm | ASTM D7647 | >20 | 4 | --- | --- |
| Particles >38µm | ASTM D7647 | >4 | 0 | --- | --- |
| Particles >71µm | ASTM D7647 | >3 | 0 | --- | --- |
| Oil Cleanliness | ISO 4406 (c) | >18/16/13 | 18/15/11 | --- | --- |

| HEAVY METALS | method | limit/base | current | history1 | history2 |
|--------------|--------|------------------|----------|----------|----------|
| Aluminum | ppm | ASTM D5185m <0.1 | 0 | --- | --- |
| Nickel | ppm | ASTM D5185m <0.1 | 0 | --- | --- |
| Lead | ppm | ASTM D5185m <0.1 | 0 | --- | --- |
| Vanadium | ppm | ASTM D5185m <0.1 | 0 | --- | --- |
| Iron | ppm | ASTM D5185m <0.1 | 0 | --- | --- |
| Calcium | ppm | ASTM D5185m <0.1 | 0 | --- | --- |
| Magnesium | ppm | ASTM D5185m <0.1 | 0 | --- | --- |
| Phosphorus | ppm | ASTM D5185m <0.1 | 0 | --- | --- |
| Zinc | ppm | ASTM D5185m <0.1 | 0 | --- | --- |

| SAMPLE IMAGES | method | limit/base | current | history1 | history2 | |
|---------------|--------|------------|---------|----------|-----------------|-----------------|
| Color | | | | | <i>no image</i> | <i>no image</i> |
| Bottom | | | | | <i>no image</i> | <i>no image</i> |

GRAPHS



Laboratory : WearCheck USA - 501 Madison Ave., Cary, NC 27513
Sample No. : WC06179666 **Received** : 14 May 2024
Lab Number : **06179666** **Tested** : 21 May 2024
Unique Number : 11030992 **Diagnosed** : 21 May 2024 - Doug Bogart
Test Package : DF-2 (Additional Tests: BACTERIA, Fuel, Screen)

PETROLEUM RECOVERY SERVICES
 210 POWELL DR
 SUMMERVILLE, SC
 US 29483
 Contact: AJAY EL
 Ajay@prsfuel.com
 T: (843)225-1777
 F:

To discuss this sample report, contact Customer Service at 1-800-237-1369.
 * - Denotes test methods that are outside of the ISO 17025 scope of accreditation.
 Statements of conformity to specifications are based on the simple acceptance decision rule (JCGM 106:2012)