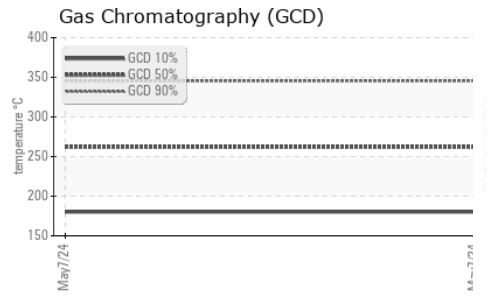
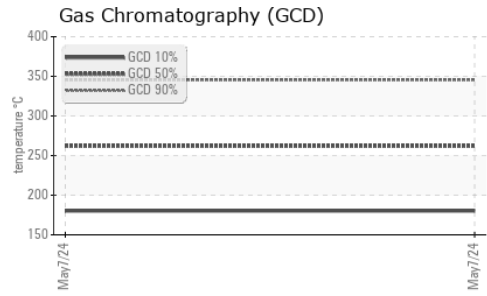
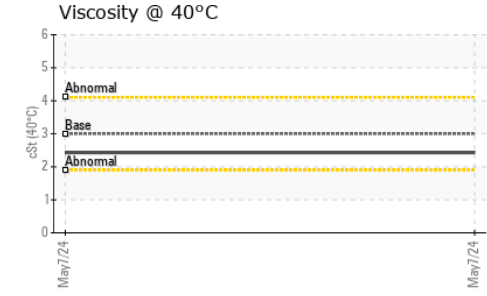
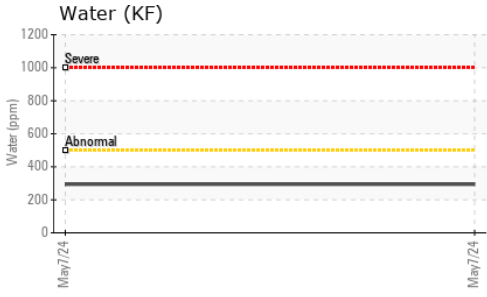




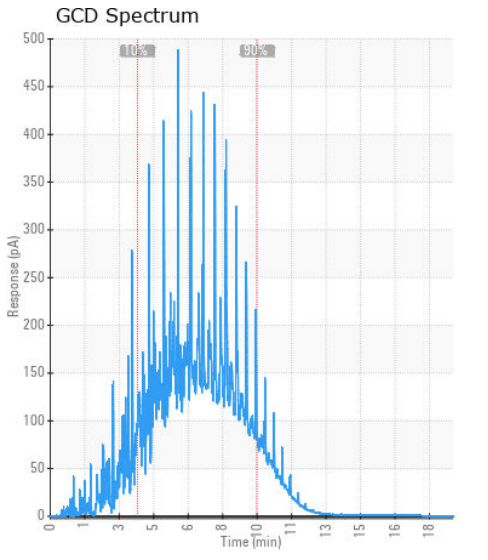
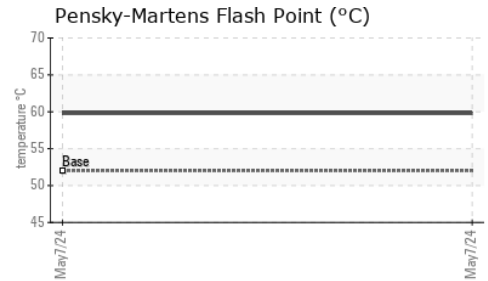
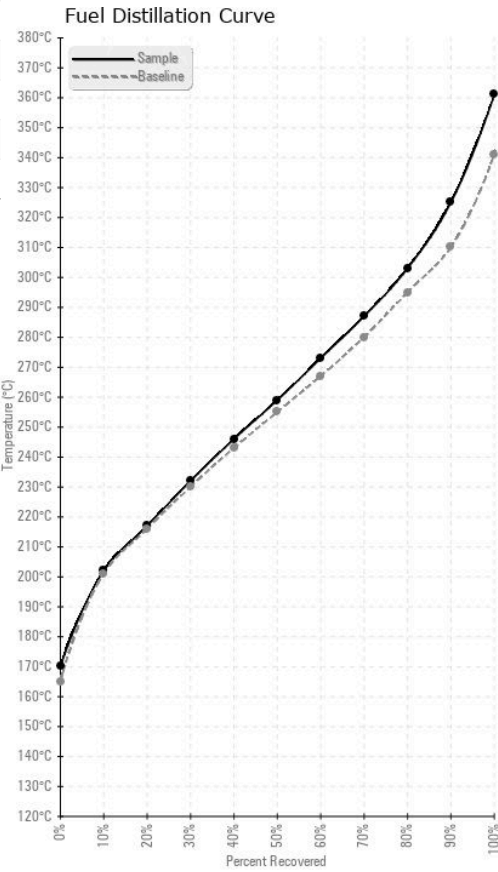
FUEL REPORT



| HEAVY METALS | | method | limit/base | current | history1 | history2 |
|--------------|-----|-------------|------------|---------|----------|----------|
| Aluminum | ppm | ASTM D5185m | <0.1 | 0 | --- | --- |
| Nickel | ppm | ASTM D5185m | <0.1 | 0 | --- | --- |
| Lead | ppm | ASTM D5185m | <0.1 | 0 | --- | --- |
| Vanadium | ppm | ASTM D5185m | <0.1 | 0 | --- | --- |
| Iron | ppm | ASTM D5185m | <0.1 | 2 | --- | --- |
| Calcium | ppm | ASTM D5185m | <0.1 | 0 | --- | --- |
| Magnesium | ppm | ASTM D5185m | <0.1 | 0 | --- | --- |
| Phosphorus | ppm | ASTM D5185m | <0.1 | <1 | --- | --- |
| Zinc | ppm | ASTM D5185m | <0.1 | 0 | --- | --- |

| SAMPLE IMAGES | | method | limit/base | current | history1 | history2 |
|---------------|--|--------|------------|----------|----------|----------|
| Color | | | | no image | no image | |
| Bottom | | | | no image | no image | |

GRAPHS



Laboratory : WearCheck USA - 501 Madison Ave., Cary, NC 27513
Sample No. : WC06179670 **Received** : 14 May 2024
Lab Number : 06179670 **Tested** : 20 May 2024
Unique Number : 11030996 **Diagnosed** : 20 May 2024 - Doug Bogart
Test Package : DF-2 (Additional Tests: Bacteria, Fuel, Screen)

PETROLEUM RECOVERY SERVICES
 210 POWELL DR
 SUMMERVILLE, SC
 US 29483
 Contact: AJAY EL
 Ajay@prsfuel.com
 T: (843)225-1777
 F:

To discuss this sample report, contact Customer Service at 1-800-237-1369.
 * - Denotes test methods that are outside of the ISO 17025 scope of accreditation.
 Statements of conformity to specifications are based on the simple acceptance decision rule (JCGM 106:2012)