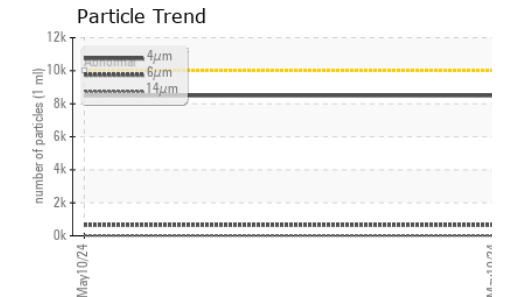
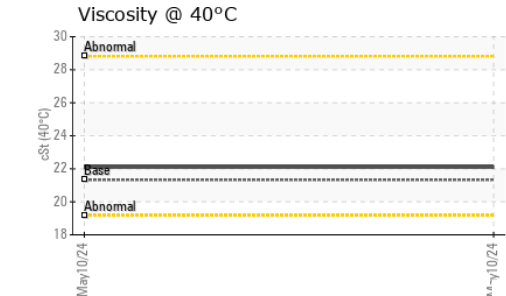
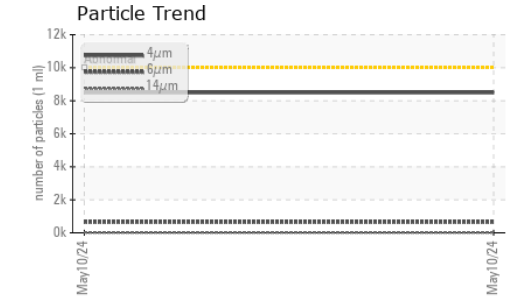
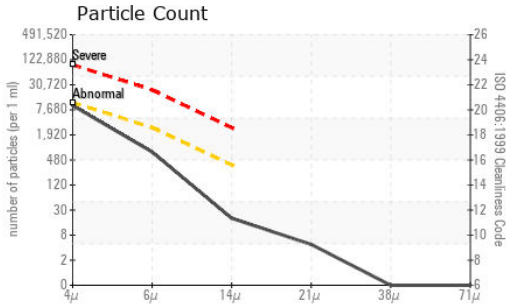






# OIL ANALYSIS REPORT



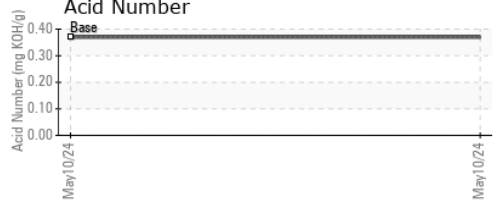
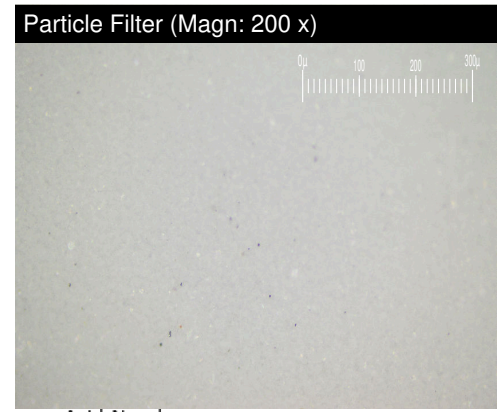
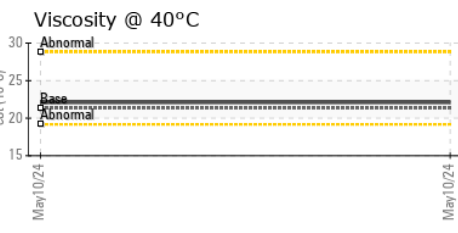
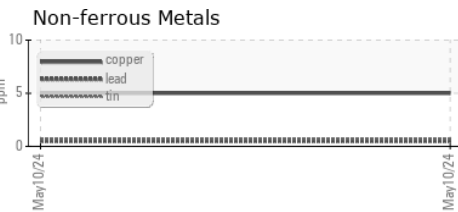
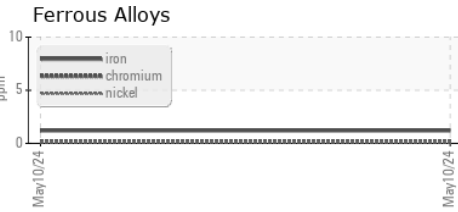
| VISUAL           | method | limit/base | current | history1 | history2 |     |
|------------------|--------|------------|---------|----------|----------|-----|
| White Metal      | scalar | *Visual    | NONE    | NONE     | ---      | --- |
| Yellow Metal     | scalar | *Visual    | NONE    | NONE     | ---      | --- |
| Precipitate      | scalar | *Visual    | NONE    | NONE     | ---      | --- |
| Silt             | scalar | *Visual    | NONE    | NONE     | ---      | --- |
| Debris           | scalar | *Visual    | NONE    | NONE     | ---      | --- |
| Sand/Dirt        | scalar | *Visual    | NONE    | NONE     | ---      | --- |
| Appearance       | scalar | *Visual    | NORML   | NORML    | ---      | --- |
| Odor             | scalar | *Visual    | NORML   | NORML    | ---      | --- |
| Emulsified Water | scalar | *Visual    | >0.05   | NEG      | ---      | --- |
| Free Water       | scalar | *Visual    |         | NEG      | ---      | --- |

| FLUID PROPERTIES | method | limit/base | current | history1 | history2 |     |
|------------------|--------|------------|---------|----------|----------|-----|
| Visc @ 40°C      | cSt    | ASTM D445  | 21.33   | 22.1     | ---      | --- |

| SAMPLE IMAGES | method | limit/base | current | history1 | history2 |
|---------------|--------|------------|---------|----------|----------|
|---------------|--------|------------|---------|----------|----------|

|           |  |  |  |          |          |
|-----------|--|--|--|----------|----------|
| Color     |  |  |  | no image | no image |
| Bottom    |  |  |  | no image | no image |
| PrtFilter |  |  |  | no image | no image |

## GRAPHS



**Laboratory** : WearCheck USA - 501 Madison Ave., Cary, NC 27513  
**Sample No.** : PH0002948      **Received** : 15 May 2024  
**Lab Number** : 06180124      **Tested** : 18 May 2024  
**Unique Number** : 11031450      **Diagnosed** : 18 May 2024 - Jonathan Hester  
**Test Package** : PLANT ( Additional Tests: PrtFilter )

**PARKER HANNIFIN CORPORATION**  
 850 ARTHUR AVE  
 ELK GROVE VILLAGE, IL  
 US 60007  
 Contact: JASON C COOLICK  
 jason.coolick@parker.com

To discuss this sample report, contact Customer Service at 1-800-237-1369.  
 \* - Denotes test methods that are outside of the ISO 17025 scope of accreditation.  
 Statements of conformity to specifications are based on the simple acceptance decision rule (JCGM 106:2012)