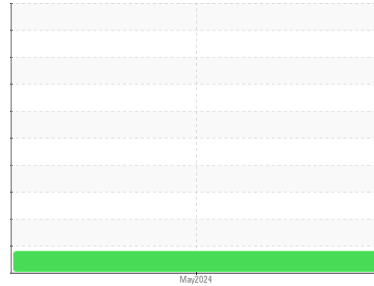




OIL ANALYSIS REPORT

Sample Rating Trend



ISO



Area
[185232-N2STV4W]

Machine Id
EXT 6

Component
Gearbox

Fluid
MOBIL SHC 634 (3 GAL)

DIAGNOSIS

Recommendation

No corrective action is recommended at this time. Resample at the next service interval to monitor.

Wear

All component wear rates are normal.

Contamination

There is a high amount of silt (particulates < 14 microns in size) present in the oil.

Fluid Condition

The AN level is acceptable for this fluid. The condition of the oil is suitable for further service.

SAMPLE INFORMATION	method	limit/base	current	history1	history2
Sample Number	Client Info		PH06180137	---	---
Sample Date	Client Info		08 May 2024	---	---
Machine Age	hrs	Client Info	0	---	---
Oil Age	hrs	Client Info	0	---	---
Oil Changed	Client Info		N/A	---	---
Sample Status			ABNORMAL	---	---

CONTAMINATION	method	limit/base	current	history1	history2
Water	WC Method	>0.2	NEG	---	---

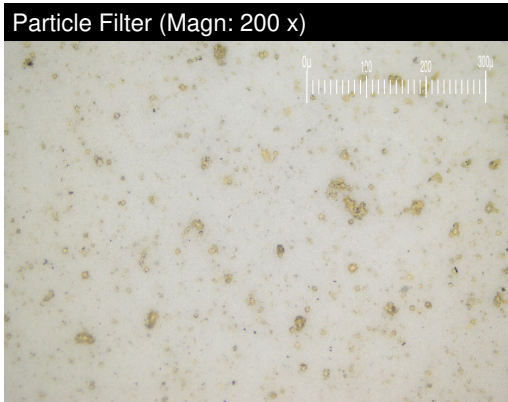
WEAR METALS	method	limit/base	current	history1	history2	
Iron	ppm	ASTM D5185m	>200	3	---	---
Chromium	ppm	ASTM D5185m	>15	<1	---	---
Nickel	ppm	ASTM D5185m	>15	<1	---	---
Titanium	ppm	ASTM D5185m		<1	---	---
Silver	ppm	ASTM D5185m		<1	---	---
Aluminum	ppm	ASTM D5185m	>25	2	---	---
Lead	ppm	ASTM D5185m	>100	<1	---	---
Copper	ppm	ASTM D5185m	>200	<1	---	---
Tin	ppm	ASTM D5185m	>25	<1	---	---
Vanadium	ppm	ASTM D5185m		<1	---	---
Cadmium	ppm	ASTM D5185m		<1	---	---

ADDITIVES	method	limit/base	current	history1	history2	
Boron	ppm	ASTM D5185m		0	---	---
Barium	ppm	ASTM D5185m		0	---	---
Molybdenum	ppm	ASTM D5185m		<1	---	---
Manganese	ppm	ASTM D5185m		0	---	---
Magnesium	ppm	ASTM D5185m		<1	---	---
Calcium	ppm	ASTM D5185m		1	---	---
Phosphorus	ppm	ASTM D5185m		456	---	---
Zinc	ppm	ASTM D5185m		0	---	---
Sulfur	ppm	ASTM D5185m		0	---	---

CONTAMINANTS	method	limit/base	current	history1	history2	
Silicon	ppm	ASTM D5185m	>50	21	---	---
Sodium	ppm	ASTM D5185m		0	---	---
Potassium	ppm	ASTM D5185m	>20	1	---	---

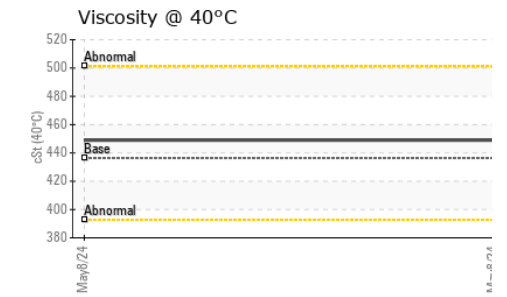
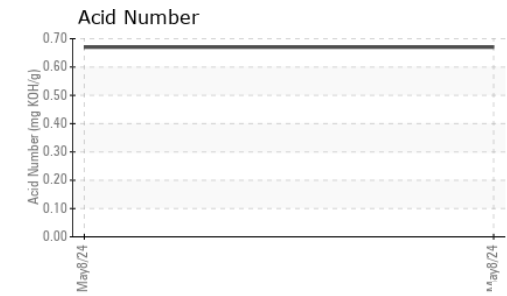
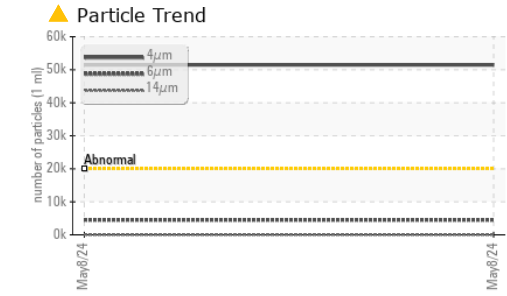
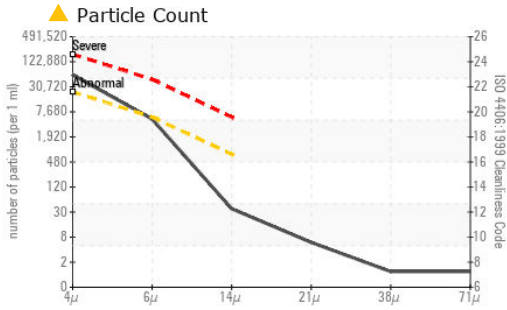
FLUID CLEANLINESS	method	limit/base	current	history1	history2
Particles >4µm	ASTM D7647	>20000	▲ 51443	---	---
Particles >6µm	ASTM D7647	>5000	4495	---	---
Particles >14µm	ASTM D7647	>640	32	---	---
Particles >21µm	ASTM D7647	>160	5	---	---
Particles >38µm	ASTM D7647	>40	1	---	---
Particles >71µm	ASTM D7647	>10	1	---	---
Oil Cleanliness	ISO 4406 (c)	>21/19/16	▲ 23/19/12	---	---

FLUID DEGRADATION	method	limit/base	current	history1	history2
Acid Number (AN)	mg KOH/g	ASTM D8045	0.67	---	---





OIL ANALYSIS REPORT



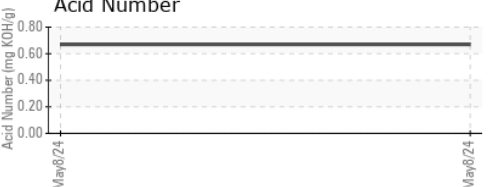
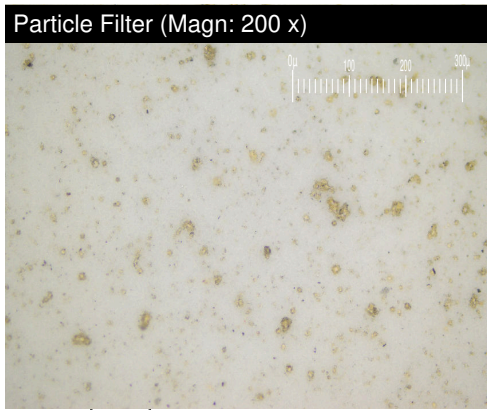
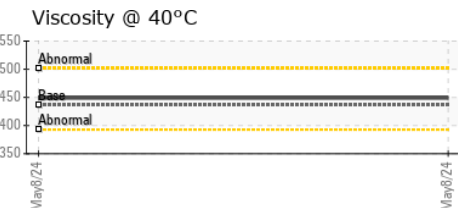
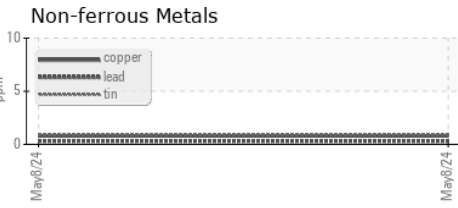
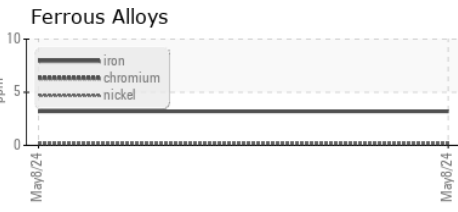
VISUAL	method	limit/base	current	history1	history2	
White Metal	scalar	*Visual	NONE	NONE	---	---
Yellow Metal	scalar	*Visual	NONE	NONE	---	---
Precipitate	scalar	*Visual	NONE	NONE	---	---
Silt	scalar	*Visual	NONE	NONE	---	---
Debris	scalar	*Visual	NONE	NONE	---	---
Sand/Dirt	scalar	*Visual	NONE	NONE	---	---
Appearance	scalar	*Visual	NORML	NORML	---	---
Odor	scalar	*Visual	NORML	NORML	---	---
Emulsified Water	scalar	*Visual	>0.2	NEG	---	---
Free Water	scalar	*Visual		NEG	---	---

FLUID PROPERTIES	method	limit/base	current	history1	history2	
Visc @ 40°C	cSt	ASTM D445	436.4	449	---	---

SAMPLE IMAGES	method	limit/base	current	history1	history2
---------------	--------	------------	---------	----------	----------

Color				no image	no image
Bottom				no image	no image
PrtFilter				no image	no image

GRAPHS



Laboratory : WearCheck USA - 501 Madison Ave., Cary, NC 27513
Sample No. : PH06180137 **Received** : 15 May 2024
Lab Number : **06180137** **Tested** : 18 May 2024
Unique Number : 11031463 **Diagnosed** : 18 May 2024 - Jonathan Hester
Test Package : PLANT (Additional Tests: PrtFilter)

TRELLEBORG HEALTHCARE AND MEDICAL
 3077 ROLLIE GATE DR
 PASO POBLES, CA
 US 93446
 Contact: DARRYL DRUM
 DARRYL.DRUM@TRELLEBORG.COM
 T: (805)239-4284
 F:

To discuss this sample report, contact Customer Service at 1-800-237-1369.
 * - Denotes test methods that are outside of the ISO 17025 scope of accreditation.
 Statements of conformity to specifications are based on the simple acceptance decision rule (JCGM 106:2012)