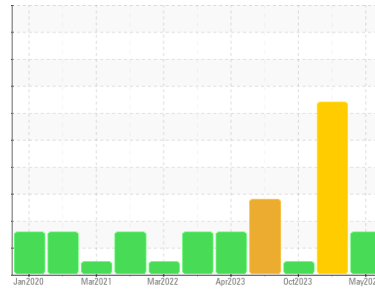




# OIL ANALYSIS REPORT

Sample Rating Trend



Area  
**MILLING**  
 Machine Id  
**C-132**  
 Component  
**Gearbox**  
 Fluid  
**MOBIL SHC 630 (--- LTR)**

## DIAGNOSIS

**Recommendation**  
 No corrective action is recommended at this time. Resample at the next service interval to monitor.

**Wear**  
 All component wear rates are normal.

**Contamination**  
 Elemental level of silicon (Si) above normal indicating ingress of seal material.

**Fluid Condition**  
 The AN level is acceptable for this fluid. The condition of the oil is suitable for further service.

SAMPLE INFORMATION		method	limit/base	current	history1	history2
Sample Number	Client Info			<b>WC0929835</b>	WC0919952	WC0866663
Sample Date	Client Info			<b>09 May 2024</b>	02 Apr 2024	11 Oct 2023
Machine Age	mths	Client Info		<b>12</b>	12	12
Oil Age	mths	Client Info		<b>1</b>	0	1
Oil Changed	Client Info			<b>N/A</b>	N/A	Changed
Sample Status				<b>ABNORMAL</b>	SEVERE	NORMAL

CONTAMINATION		method	limit/base	current	history1	history2
Water	WC Method		>0.2	<b>NEG</b>	NEG	NEG

WEAR METALS		method	limit/base	current	history1	history2
Iron	ppm	ASTM D5185m	>200	<b>22</b>	▲ 337	113
Chromium	ppm	ASTM D5185m	>15	<b>&lt;1</b>	2	<1
Nickel	ppm	ASTM D5185m	>15	<b>&lt;1</b>	2	0
Titanium	ppm	ASTM D5185m		<b>&lt;1</b>	<1	0
Silver	ppm	ASTM D5185m		<b>&lt;1</b>	0	0
Aluminum	ppm	ASTM D5185m	>25	<b>2</b>	2	1
Lead	ppm	ASTM D5185m	>100	<b>&lt;1</b>	0	0
Copper	ppm	ASTM D5185m	>200	<b>&lt;1</b>	<1	<1
Tin	ppm	ASTM D5185m	>25	<b>&lt;1</b>	0	0
Vanadium	ppm	ASTM D5185m		<b>&lt;1</b>	<1	0
Cadmium	ppm	ASTM D5185m		<b>&lt;1</b>	0	0

ADDITIVES		method	limit/base	current	history1	history2
Boron	ppm	ASTM D5185m		<b>0</b>	0	0
Barium	ppm	ASTM D5185m		<b>0</b>	0	0
Molybdenum	ppm	ASTM D5185m		<b>&lt;1</b>	<1	0
Manganese	ppm	ASTM D5185m		<b>&lt;1</b>	3	1
Magnesium	ppm	ASTM D5185m		<b>1</b>	2	0
Calcium	ppm	ASTM D5185m		<b>2</b>	9	2
Phosphorus	ppm	ASTM D5185m		<b>515</b>	404	478
Zinc	ppm	ASTM D5185m		<b>7</b>	2	0
Sulfur	ppm	ASTM D5185m		<b>178</b>	0	36

CONTAMINANTS		method	limit/base	current	history1	history2
Silicon	ppm	ASTM D5185m	>50	▲ <b>61</b>	▲ 276	43
Sodium	ppm	ASTM D5185m		<b>0</b>	1	<1
Potassium	ppm	ASTM D5185m	>20	<b>2</b>	2	<1

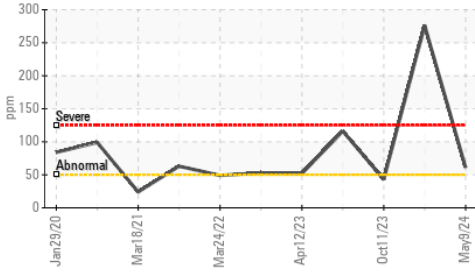
FLUID CLEANLINESS		method	limit/base	current	history1	history2
Particles >4µm		ASTM D7647	>20000	<b>121164</b>	---	189109
Particles >6µm		ASTM D7647	>5000	<b>17750</b>	---	126191
Particles >14µm		ASTM D7647	>640	<b>350</b>	---	1666
Particles >21µm		ASTM D7647	>160	<b>88</b>	---	101
Particles >38µm		ASTM D7647	>40	<b>1</b>	---	3
Particles >71µm		ASTM D7647	>10	<b>0</b>	---	2
Oil Cleanliness		ISO 4406 (c)	>21/19/16	<b>24/21/16</b>	---	25/24/18

FLUID DEGRADATION		method	limit/base	current	history1	history2
Acid Number (AN)	mg KOH/g	ASTM D8045		<b>0.62</b>	0.61	0.52

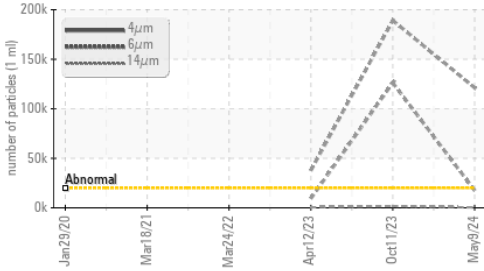


# OIL ANALYSIS REPORT

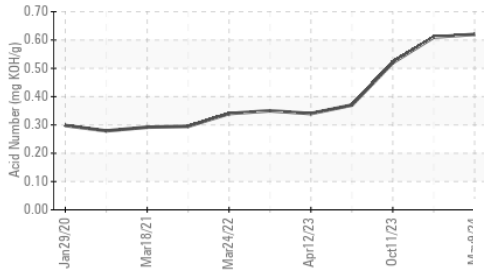
▲ Silicon (ppm)



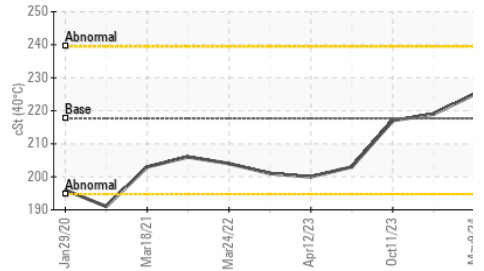
Particle Trend



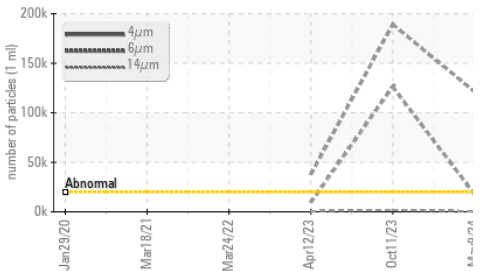
Acid Number



Viscosity @ 40°C



Particle Trend

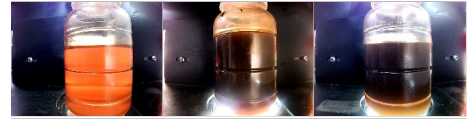


VISUAL	method	limit/base	current	history1	history2
White Metal	scalar	*Visual	NONE	NONE	NONE
Yellow Metal	scalar	*Visual	NONE	NONE	NONE
Precipitate	scalar	*Visual	NONE	NONE	NONE
Silt	scalar	*Visual	NONE	▲ MODER	NONE
Debris	scalar	*Visual	NONE	NONE	NONE
Sand/Dirt	scalar	*Visual	NONE	NONE	NONE
Appearance	scalar	*Visual	NORML	HAZY	NORML
Odor	scalar	*Visual	NORML	NORML	NORML
Emulsified Water	scalar	*Visual	>0.2	NEG	NEG
Free Water	scalar	*Visual		NEG	NEG

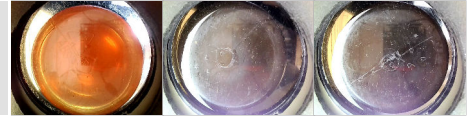
FLUID PROPERTIES	method	limit/base	current	history1	history2
Visc @ 40°C	cSt	ASTM D445	217.7	225	219

SAMPLE IMAGES	method	limit/base	current	history1	history2
---------------	--------	------------	---------	----------	----------

Color

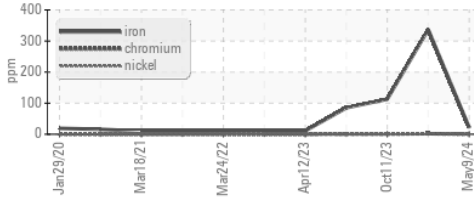


Bottom

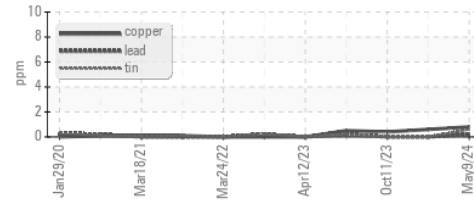


## GRAPHS

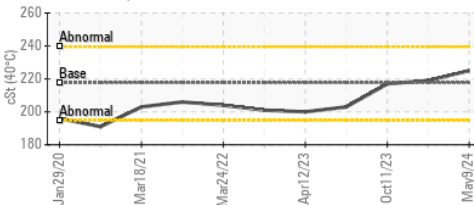
Ferrous Alloys



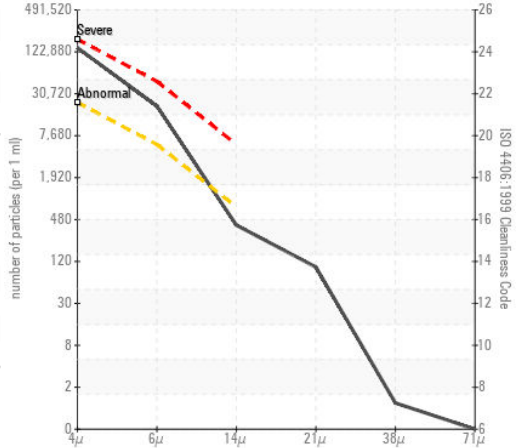
Non-ferrous Metals



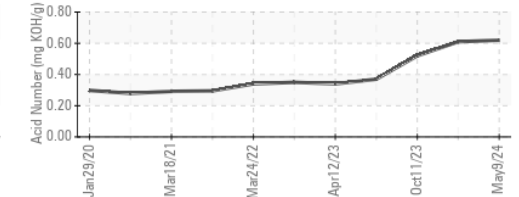
Viscosity @ 40°C



Particle Count



Acid Number



Certificate L2367

Laboratory : WearCheck USA - 501 Madison Ave., Cary, NC 27513

Sample No. : WC0929835

Lab Number : 06180141

Unique Number : 11031467

Test Package : IND 2 ( Additional Tests: PrtCount )

Received : 15 May 2024

Tested : 16 May 2024

Diagnosed : 17 May 2024 - Angela Borella

To discuss this sample report, contact Customer Service at 1-800-237-1369.

\* - Denotes test methods that are outside of the ISO 17025 scope of accreditation.

Statements of conformity to specifications are based on the simple acceptance decision rule (JCGM 106:2012)

POET BIOREFINING - Groton

40425 133RD STREET

GROTON, SD

US 57445-6400

Contact: GAVIN KRUEGER

Gavin.Krueger@POET.COM

T: 6(05) 846-6863

F: (605)397-2754