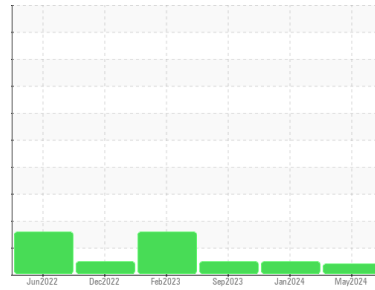




FUEL REPORT

Sample Rating Trend



VIS DEBRIS



Machine Id

CR3307 (S/N 138281)

Component

Diesel Fuel

Fluid

No.2 DIESEL FUEL (ULTRALOW SULPHUR) (--- GAL)

DIAGNOSIS

▲ Recommendation

This is a baseline read-out on the submitted sample. We recommend you service the filters on this component.

Corrosion

All metal levels are normal indicating no corrosion in the system.

▲ Contaminants

High concentration of visible dirt/debris present in the fuel. The water content is negligible.

Fuel Condition

The condition of the fuel is acceptable for the time in service.

SAMPLE INFORMATION		method	limit/base	current	history1	history2
Sample Number	Client Info			WC0922130	WC0751841	WC0823450
Sample Date	Client Info			09 May 2024	04 Jan 2024	30 Sep 2023
Machine Age	hrs	Client Info		12768	12302	11920
Sample Status				ABNORMAL	NORMAL	NORMAL

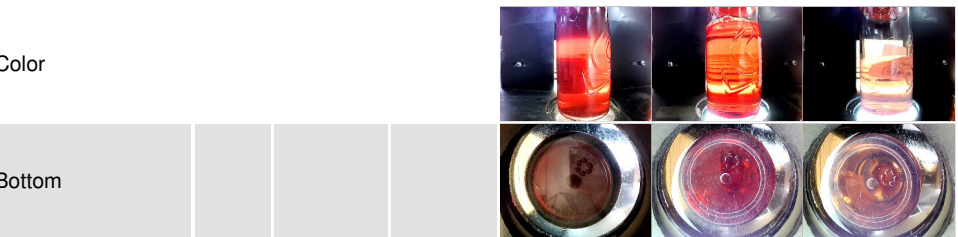
PHYSICAL PROPERTIES		method	limit/base	current	history1	history2
Visc @ 40°C	cSt	ASTM D445	3.0	2.28	2.42	2.46

SULFUR CONTENT		method	limit/base	current	history1	history2
Sulfur	ppm	ASTM D5185m	10	0	0	<1

CONTAMINANTS		method	limit/base	current	history1	history2
Silicon	ppm	ASTM D5185m	<1.0	0	0	0
Sodium	ppm	ASTM D5185m	<0.1	1	0	0
Potassium	ppm	ASTM D5185m	<0.1	0	<1	<1
Water	%	ASTM D6304	<0.05	0.005	0.007	0.003
ppm Water	ppm	ASTM D6304	<500	58	76	30.7

HEAVY METALS		method	limit/base	current	history1	history2
Aluminum	ppm	ASTM D5185m	<0.1	0	2	0
Nickel	ppm	ASTM D5185m	<0.1	0	0	0
Lead	ppm	ASTM D5185m	<0.1	0	0	0
Vanadium	ppm	ASTM D5185m	<0.1	0	0	0
Iron	ppm	ASTM D5185m	<0.1	0	0	0
Calcium	ppm	ASTM D5185m	<0.1	1	1	0
Magnesium	ppm	ASTM D5185m	<0.1	1	0	0
Phosphorus	ppm	ASTM D5185m	<0.1	0	0	2
Zinc	ppm	ASTM D5185m	<0.1	0	0	0

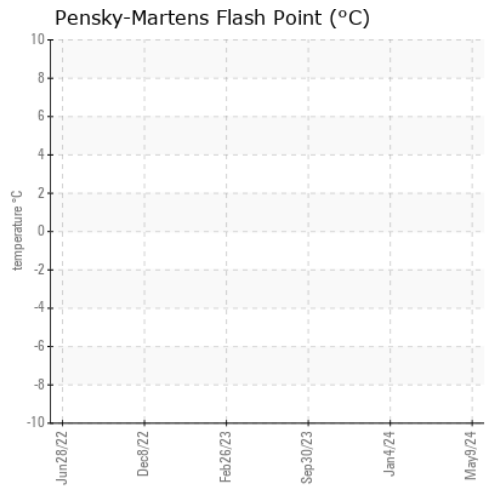
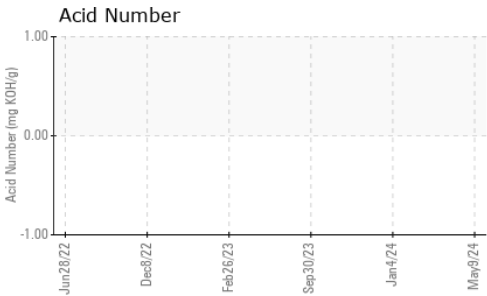
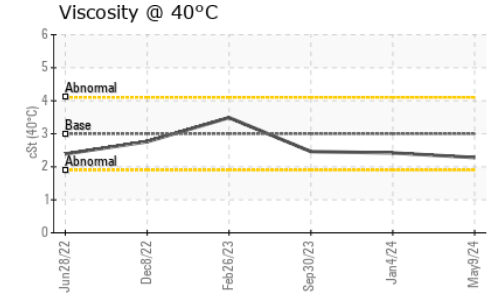
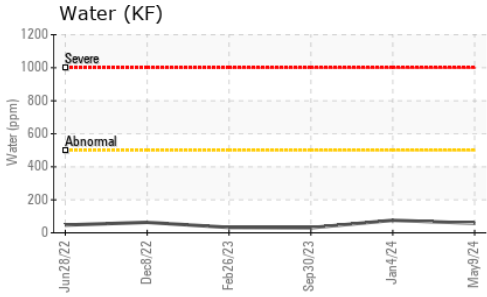
SAMPLE IMAGES		method	limit/base	current	history1	history2
---------------	--	--------	------------	---------	----------	----------





FUEL REPORT

GRAPHS



Certificate L2367

To discuss this sample report, contact Customer Service at 1-800-237-1369.

* - Denotes test methods that are outside of the ISO 17025 scope of accreditation.

Statements of conformity to specifications are based on the simple acceptance decision rule (JCGM 106:2012)

Laboratory : WearCheck USA - 501 Madison Ave., Cary, NC 27513
Sample No. : WC0922130
Lab Number : 06180882
Unique Number : 11032208
Test Package : CONST (Additional Tests: KF)

Received : 15 May 2024
Tested : 23 May 2024
Diagnosed : 23 May 2024 - Jonathan Hester

BUCKNER HEAVY LIFT
 4732 NC 54 EAST
 GRAHAM, NC
 US 27253-9215

Contact: MICHAEL LAWSON
 michael@bucknercompanies.com

T: (336)376-8888

F: (336)376-4090