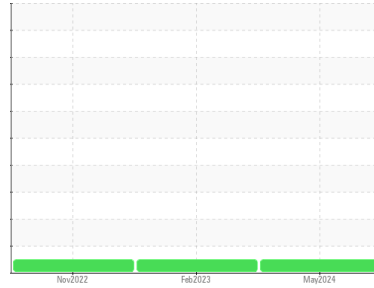


FUEL REPORT

Sample Rating Trend

NORMAL



Area
[X48984]
 Machine Id
VOLVO A25G 752510
 Component
Diesel Fuel
 Fluid
No.2 DIESEL FUEL (ULTRALOW SULPHUR) (--- GAL)

DIAGNOSIS

Recommendation

This is a baseline read-out on the submitted sample.

Corrosion

All metal levels are normal indicating no corrosion in the system.

Contaminants

The water content is negligible. There is no indication of any contamination in the fuel.

Fuel Condition

The condition of the fuel is acceptable for the time in service.

SAMPLE INFORMATION		method	limit/base	current	history1	history2
Sample Number	Client Info			VCP444509	VCP378230	VCP391199
Sample Date	Client Info			10 May 2024	07 Feb 2023	22 Nov 2022
Machine Age	hrs	Client Info		2407	913	311
Sample Status				NORMAL	NORMAL	NORMAL

PHYSICAL PROPERTIES		method	limit/base	current	history1	history2
Visc @ 40°C	cSt	ASTM D445	3.0	2.3	2.4	2.24

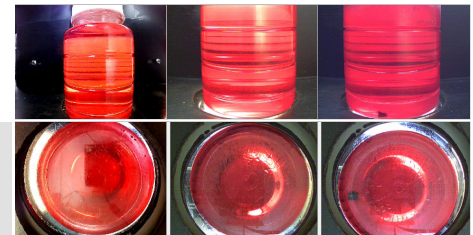
SULFUR CONTENT		method	limit/base	current	history1	history2
Sulfur	ppm	ASTM D5185m	10	0	0	0

CONTAMINANTS		method	limit/base	current	history1	history2
Silicon	ppm	ASTM D5185m	<1.0	0	0	0
Sodium	ppm	ASTM D5185m	<0.1	1	0	0
Potassium	ppm	ASTM D5185m	<0.1	0	0	0
Water	%	ASTM D6304	<0.05	0.003	0.003	---
ppm Water	ppm	ASTM D6304	<500	36	34.2	---

HEAVY METALS		method	limit/base	current	history1	history2
Aluminum	ppm	ASTM D5185m	<0.1	0	0	0
Nickel	ppm	ASTM D5185m	<0.1	0	0	0
Lead	ppm	ASTM D5185m	<0.1	0	0	0
Vanadium	ppm	ASTM D5185m	<0.1	0	0	0
Iron	ppm	ASTM D5185m	<0.1	0	0	0
Calcium	ppm	ASTM D5185m	<0.1	0	0	0
Magnesium	ppm	ASTM D5185m	<0.1	0	<1	1
Phosphorus	ppm	ASTM D5185m	<0.1	0	0	11
Zinc	ppm	ASTM D5185m	<0.1	0	0	0

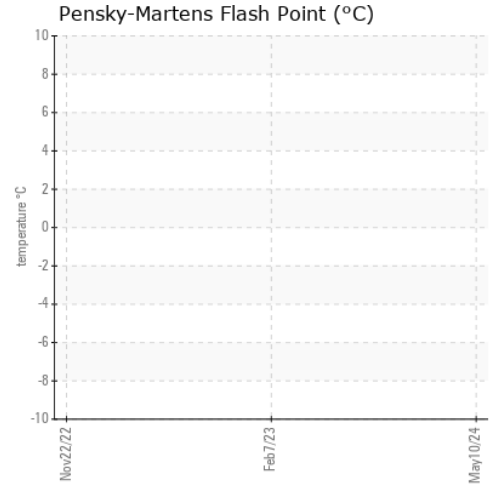
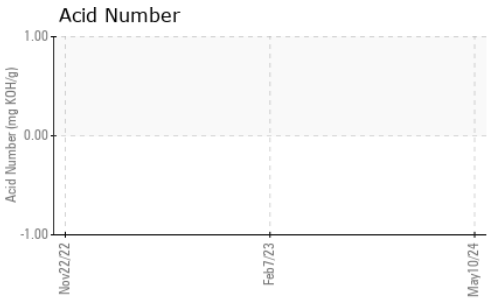
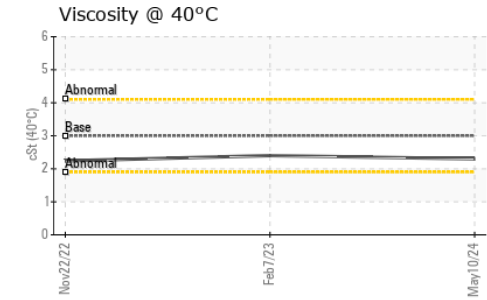
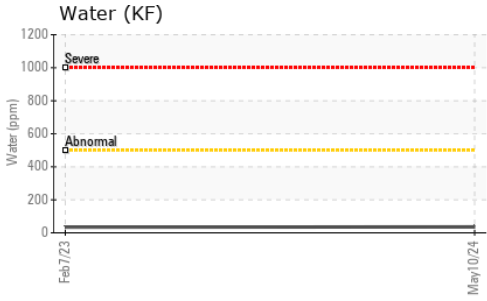
SAMPLE IMAGES

SAMPLE IMAGES		method	limit/base	current	history1	history2
Color						
Bottom						



FUEL REPORT

GRAPHS



Certificate L2367

To discuss this sample report, contact Customer Service at 1-800-237-1369.

* - Denotes test methods that are outside of the ISO 17025 scope of accreditation.

Statements of conformity to specifications are based on the simple acceptance decision rule (JCGM 106:2012)

Laboratory : WearCheck USA - 501 Madison Ave., Cary, NC 27513
Sample No. : VCP444509
Lab Number : 06181883
Unique Number : 11033209
Test Package : MOB 1 (Additional Tests: KF)

Received : 16 May 2024
Tested : 21 May 2024
Diagnosed : 21 May 2024 - Jonathan Hester

SCOTT EQUIPMENT COMPANY LLC - Lake Charles
 PO BOX 16955
 LAKE CHARLES, LA
 US 70616

Contact: SAMANTHA SOILEAU
 ssoileau@scottcompanies.com

T: (337)433-9811

F: (318)433-6623